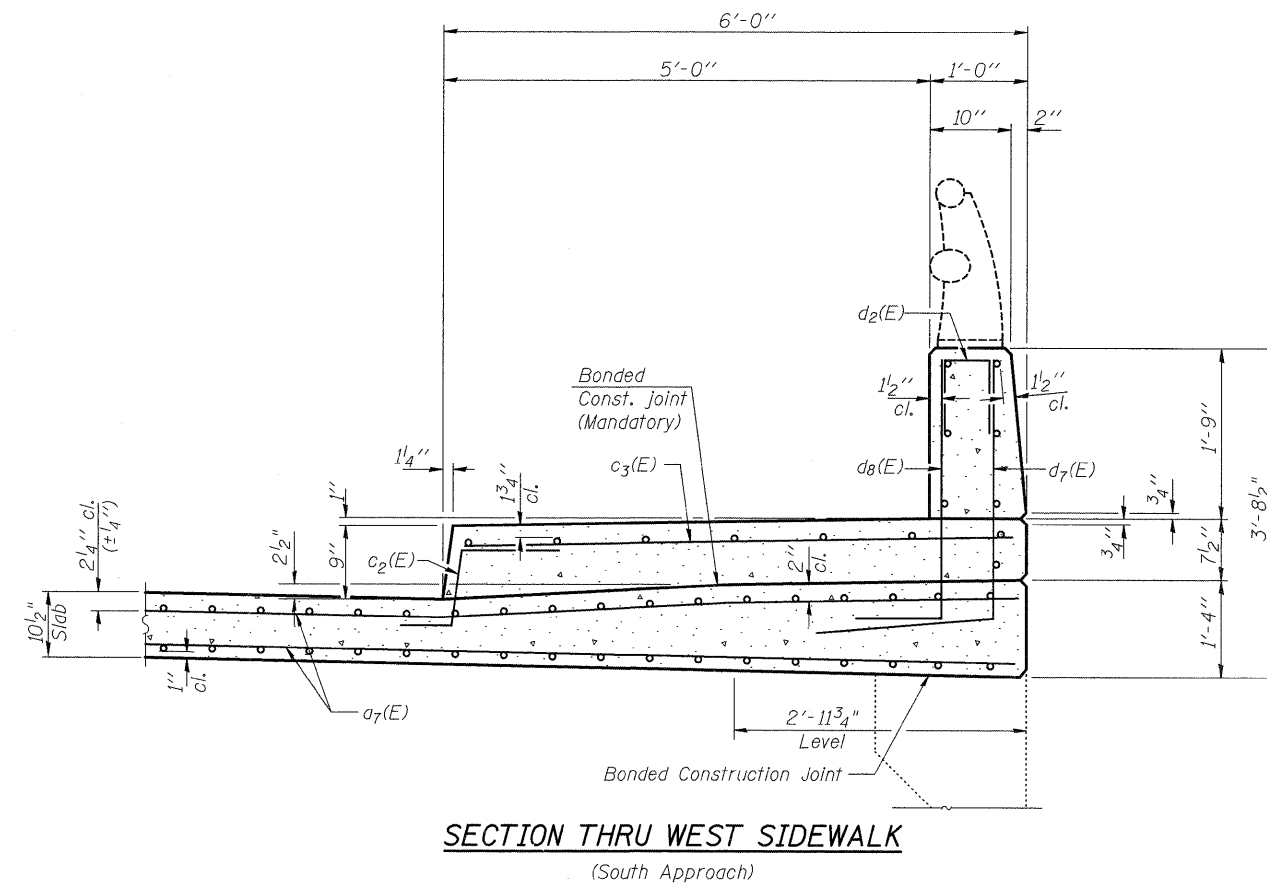
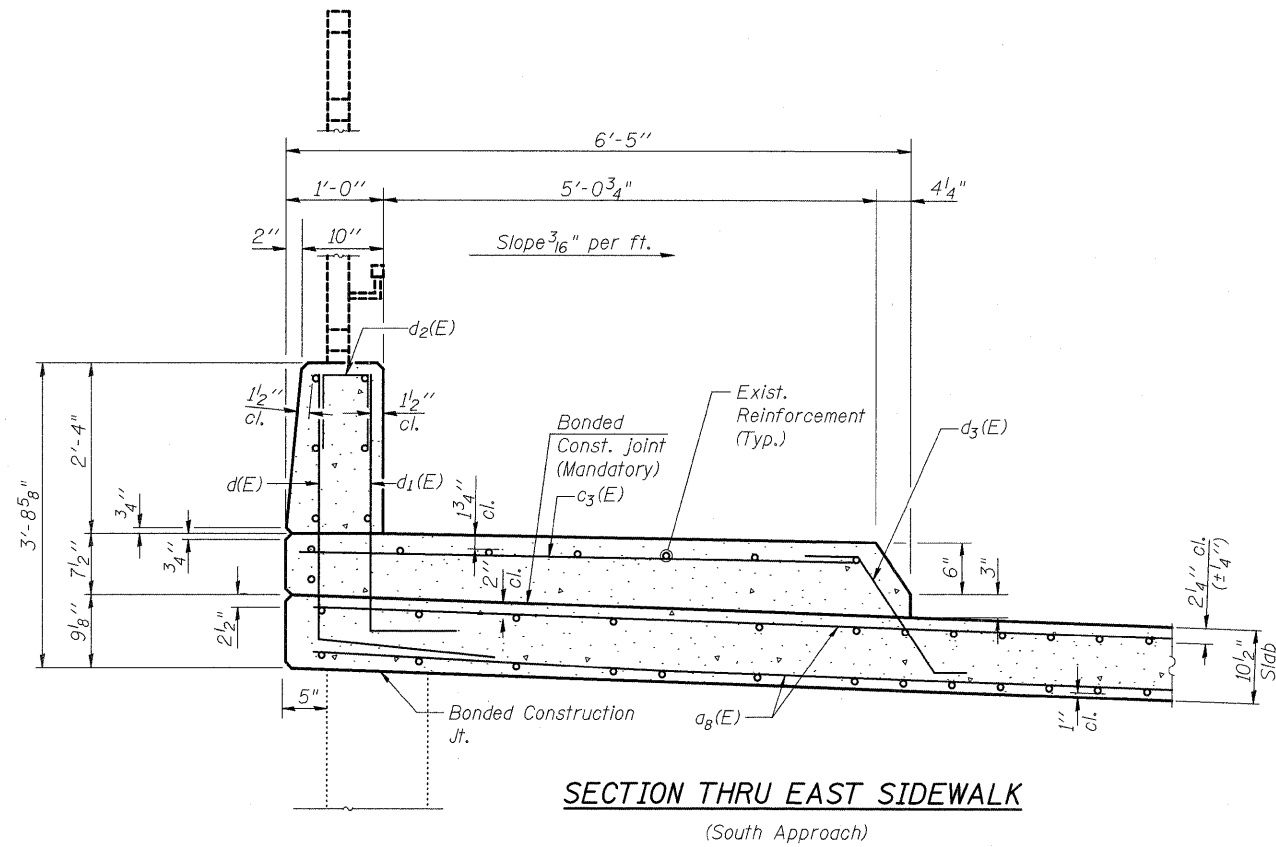


STATE OF ILLINOIS
DEPARTMENT OF TRANSPORTATION

ROUTE NO.	SECTION	COUNTY	TOTAL SHEETS	SHEET NO.	SHEET NO.
FAI 74	*	ROCK ISLAND	246	205	12 SHEETS
FED. ROAD DIST. NO. 7	ILLINOIS	FED. AID PROJECT			

* 81 (1-2, 1, 2-2) RS-1 & M



DESIGNED	DFM
CHECKED	DSG
DRAWN	EBS
CHECKED	DFM

APPROACH AND SUPERSTRUCTURE DETAILS
N.B. 27TH ST. OVER F.A.I. 74
ROCK ISLAND COUNTY
STRUCTURE NO. 081-0108