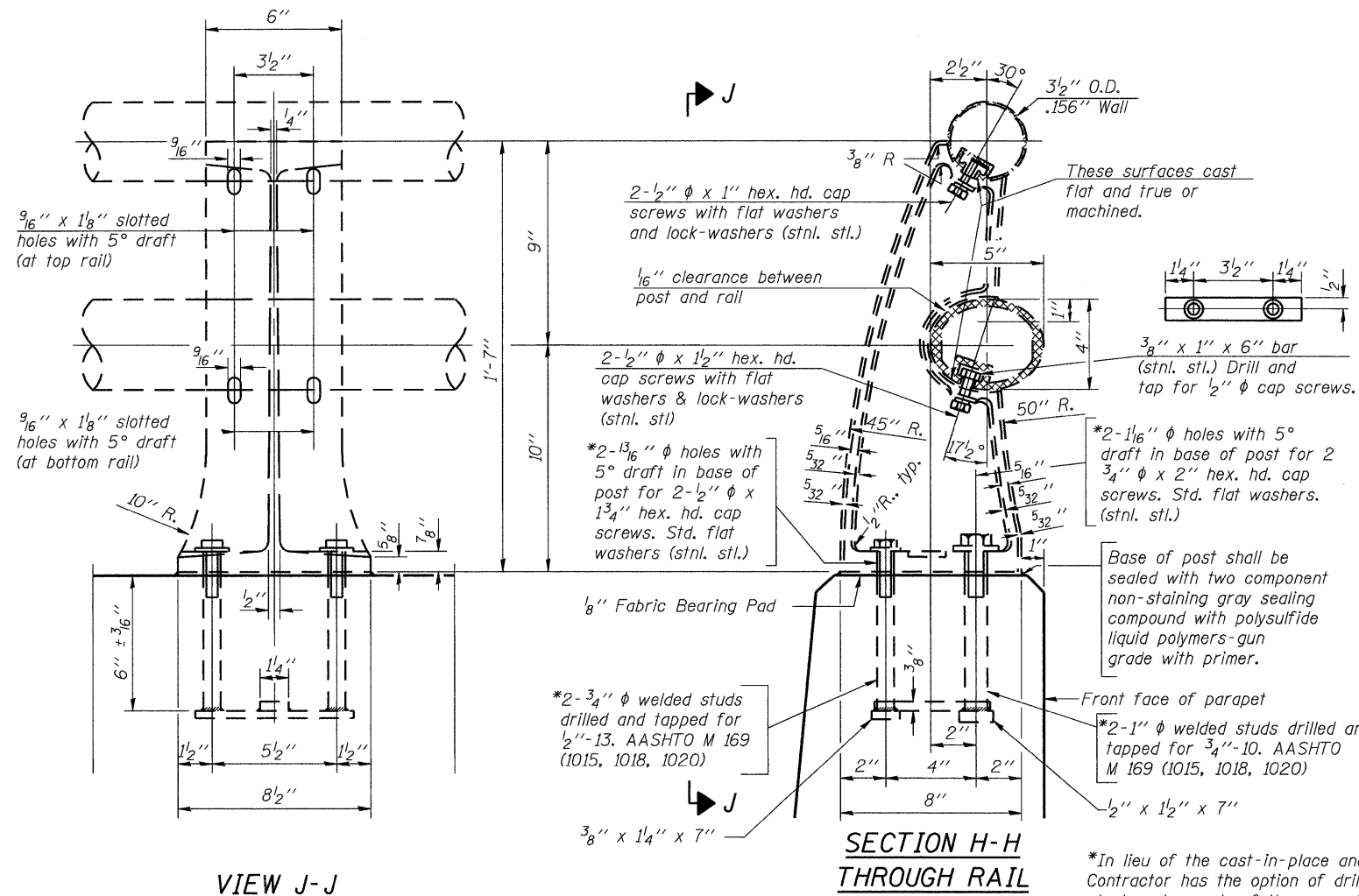


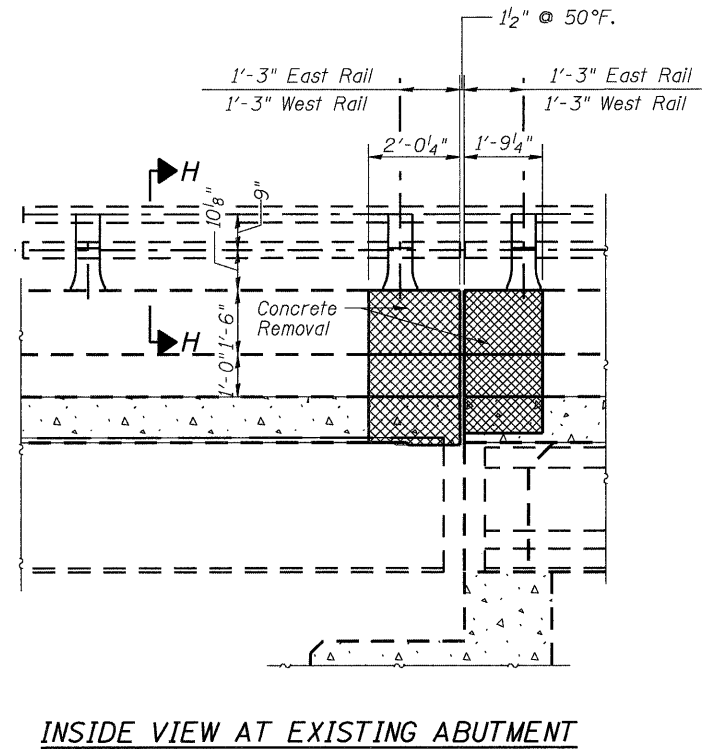
STATE OF ILLINOIS
DEPARTMENT OF TRANSPORTATION

ROUTE NO.	SECTION	COUNTY	TOTAL SHEETS	SHEET NO.	SHEET NO.
FAI 74	*	ROCK ISLAND	246	198	11 SHEETS
FED. ROAD DIST. NO. 7	ILLINOIS	FED. AID PROJECT-			

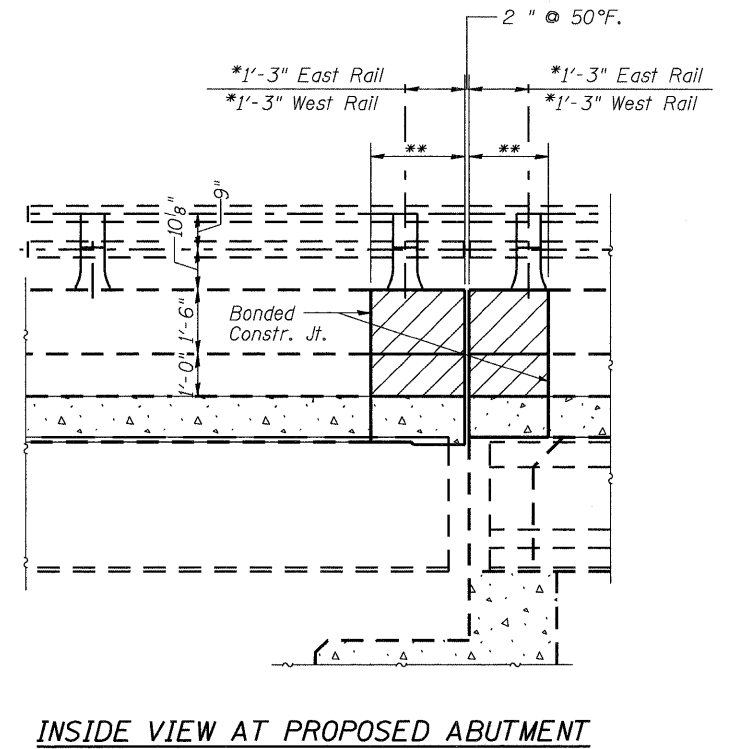
* 81 (1-2, 1, 2-2) RS-1 & M



RAIL POST DETAILS



INSIDE VIEW AT EXISTING ABUTMENT



INSIDE VIEW AT PROPOSED ABUTMENT

*In lieu of the cast-in-place anchor device shown, the Contractor has the option of drilling and setting stainless steel anchor rods of the same diameter and grade as the specified cap screws according to Article 509.06 of the Standard Specifications. Embedment shall be according to the manufacturer's specifications.

** See sheet 4 of 12 for dimension.

Notes:
For concrete removal limits See Sheet 4 of 12.
Remove and reuse railing, including posts and anchors, where concrete removal affects existing rail posts. If anchors are damaged during construction, they shall be replaced and are included with concrete removal.
Length of rail shall be adjusted as detailed with a flush cut and the cast end cap shall be reused.

DESIGNED	DFM
CHECKED	DFM
DRAWN	EBS
CHECKED	DFM

RAILING DETAILS
23RD AVE. OVER F.A.I. 74
ROCK ISLAND COUNTY
STRUCTURE NO. 081-0105