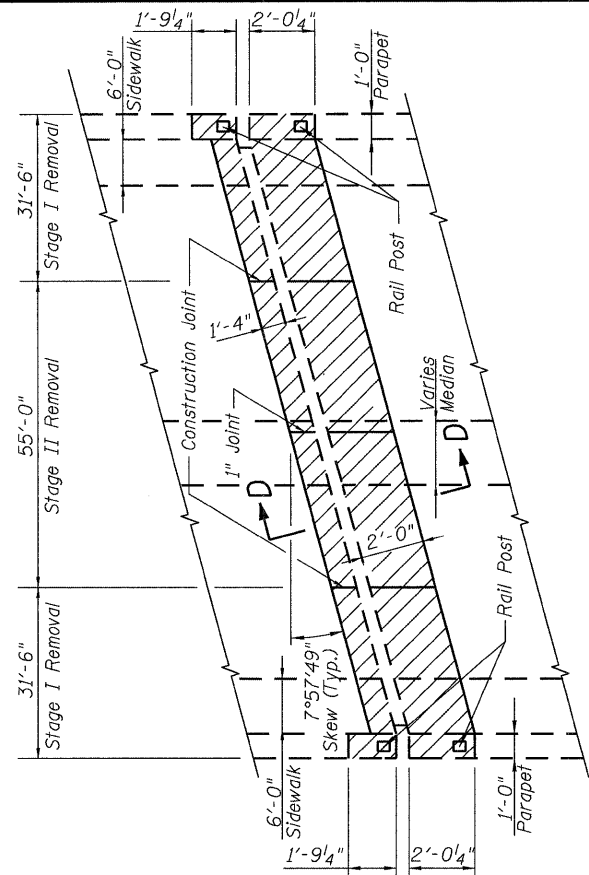


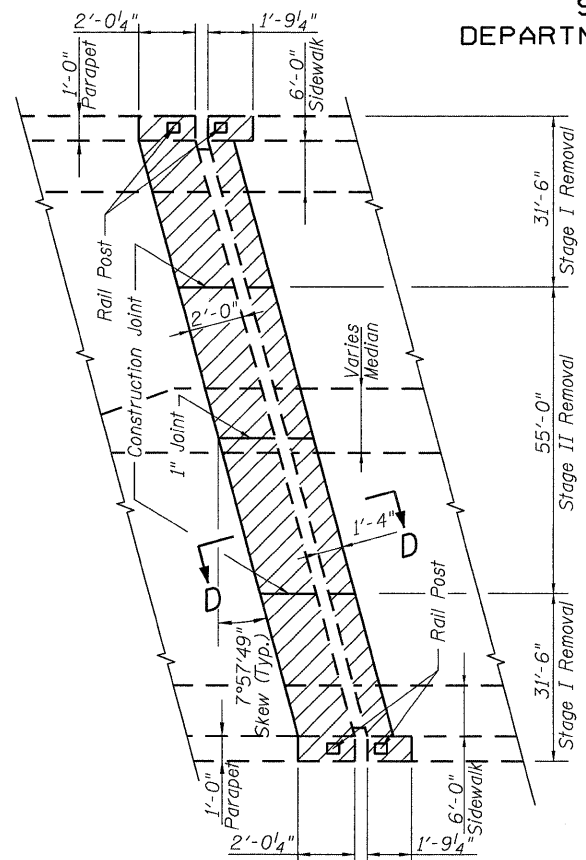
STATE OF ILLINOIS
DEPARTMENT OF TRANSPORTATION

ROUTE NO.	SECTION	COUNTY	TOTAL SHEETS	SHEET NO.	SHEET NO.
FAI 74	*	ROCK ISLAND	246	191	11 SHEETS
FED. ROAD DIST. NO. 7	ILLINOIS	FED. AID PROJECT-			

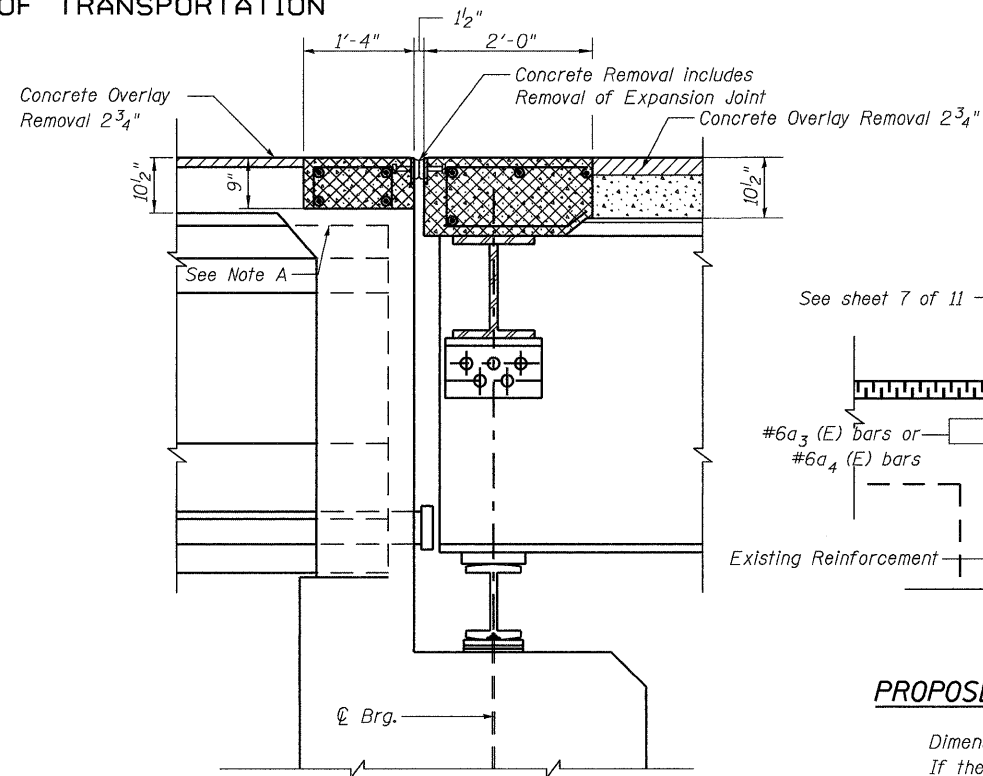
* B1 (1-2, 1, 2-2) RS-1 & M



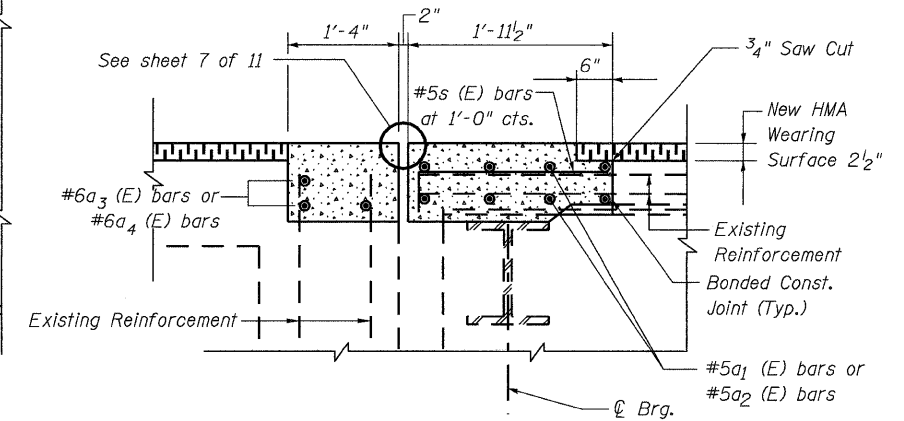
EXISTING PARTIAL PLAN -
WEST ABUTMENT EXPANSION JOINT



EXISTING PARTIAL PLAN -
EAST ABUTMENT EXPANSION JOINT



EXISTING SECTION D-D THRU ABUTMENTS



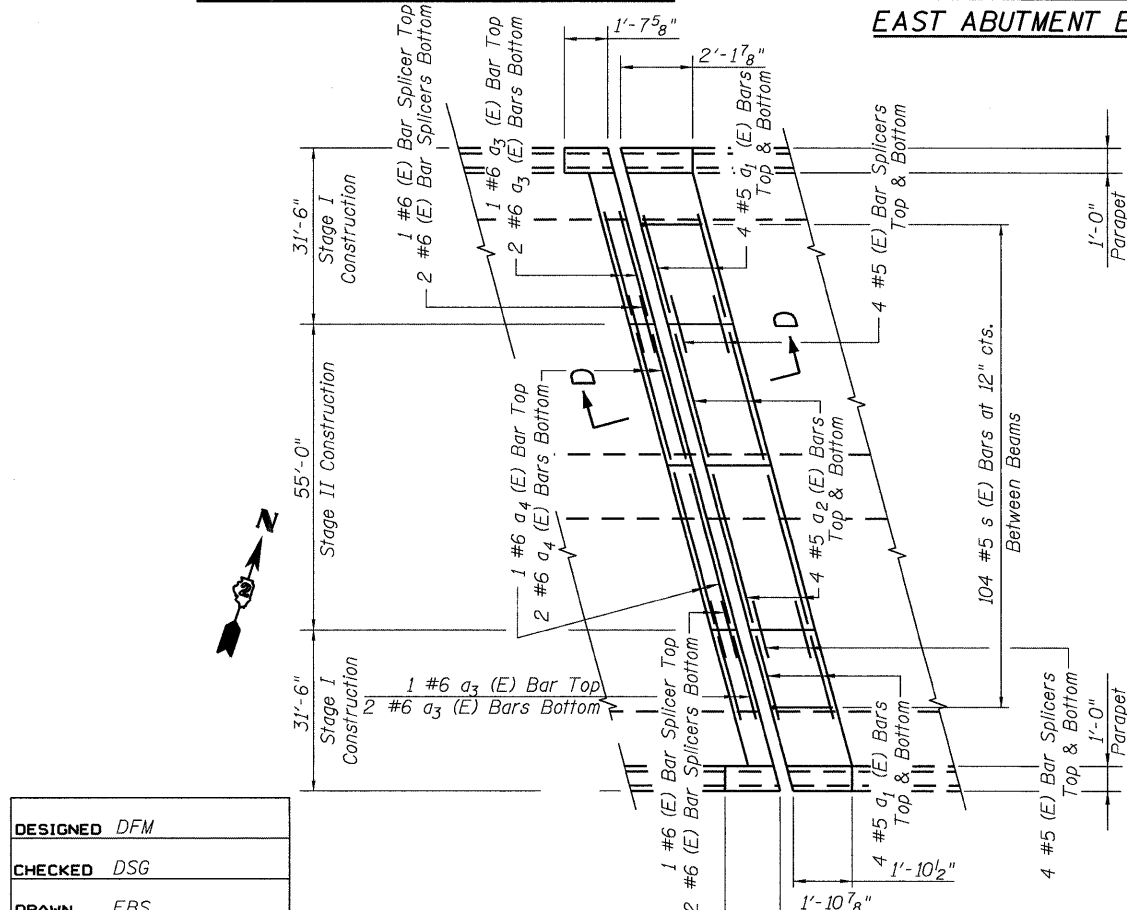
PROPOSED SECTION D-D THRU ABUTMENTS

Dimensions are based on a Rolled Rail Strip Seal Joint. If the contractor elects to use the Welded Rail Strip Seal Joint, deck dimensions may require adjustments to satisfy the details on Sheet 7 of 11.

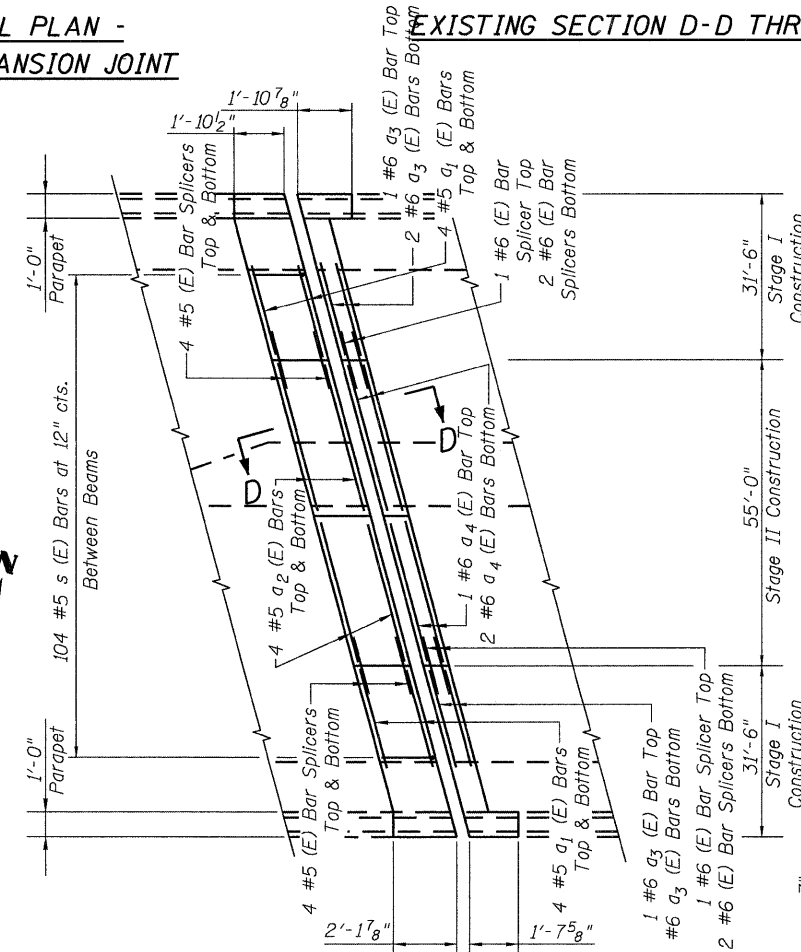
BILL OF MATERIAL

BAR	NO.	SIZE	LENGTH	SHAPE
a ₁ (E)	32	#5	25'-4"	—
a ₂ (E)	32	#5	27'-6"	—
a ₃ (E)	12	#6	25'-4"	—
a ₄ (E)	12	#6	27'-6"	—
s (E)	208	#5	2'-4"	┌
Reinforcement Bars Epoxy Coated			Pound	3220
Concrete Removal			Cu. Yd.	27.3
Concrete Superstructure			Cu. Yd.	27.3
Bar Splicer			Each	44

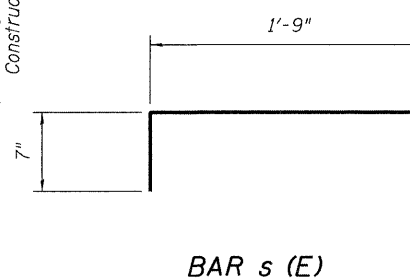
NOTE A: Contractor shall take care in removal of concrete deck as to not damage the prestressed concrete beams in the top of the vaulted abutment. Any damage will need to be repaired to the satisfaction of the Resident Engineer at the contractor's expense. No additional payment will be made. For bar splicer assembly details see sheet 8 of 11. For Rail Post Details see sheet 11 of 11. For additional notes see sheet 1 of 11. For Parapet, Sidewalk & Median reinforcement see sheet 6 of 11.



PROPOSED PARTIAL PLAN -
WEST ABUTMENT EXPANSION JOINT



PROPOSED PARTIAL PLAN -
EAST ABUTMENT EXPANSION JOINT



BAR s (E)

LEGEND

- Concrete Removal
- Concrete Superstructure

JOINT RECONSTRUCTION DETAILS
23RD AVE. OVER F.A.I. 74
ROCK ISLAND COUNTY
STRUCTURE NO. 081-0105

DESIGNED	DFM
CHECKED	DSG
DRAWN	EBS
CHECKED	DFM