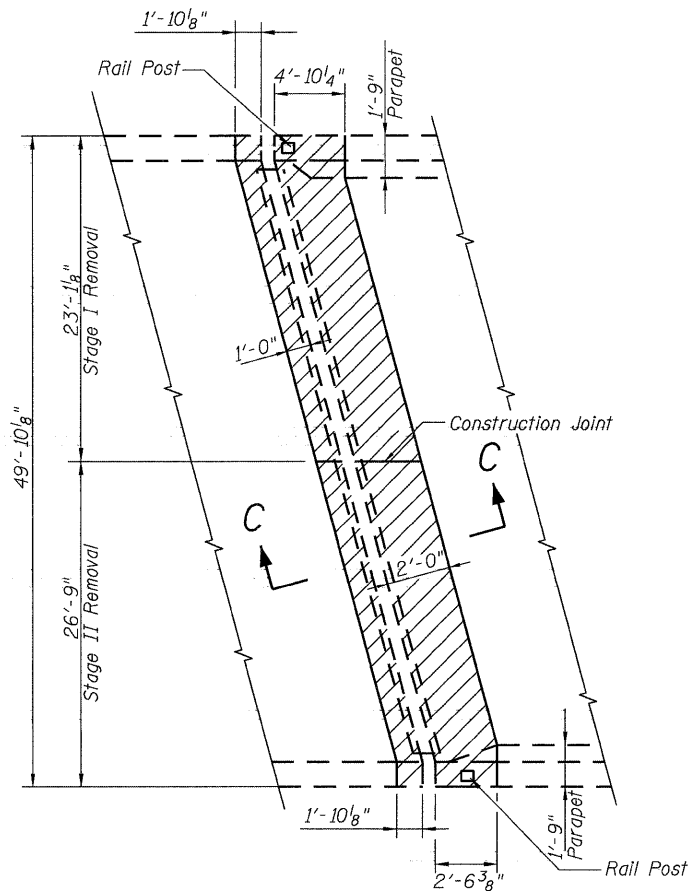
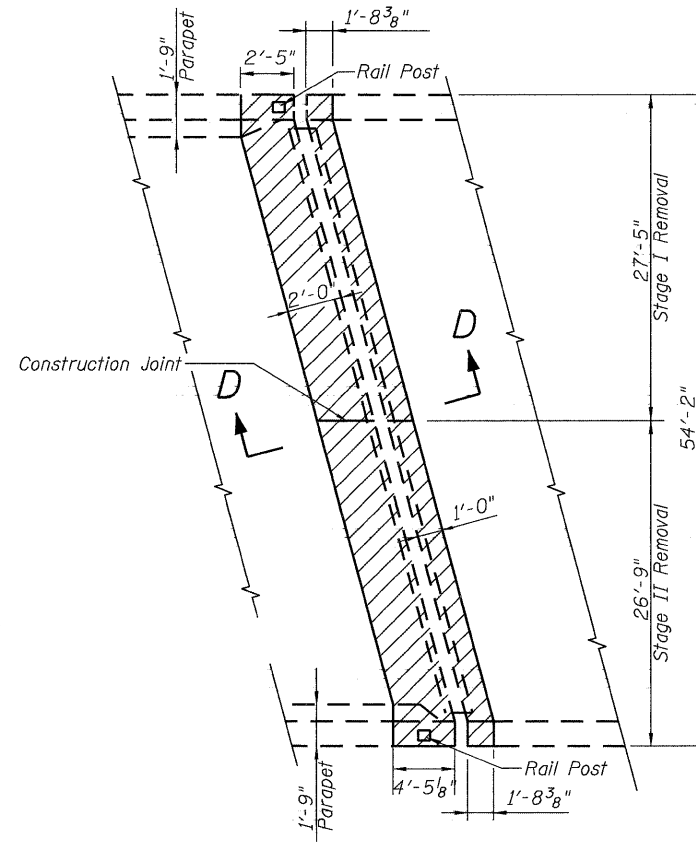


STATE OF ILLINOIS
DEPARTMENT OF TRANSPORTATION

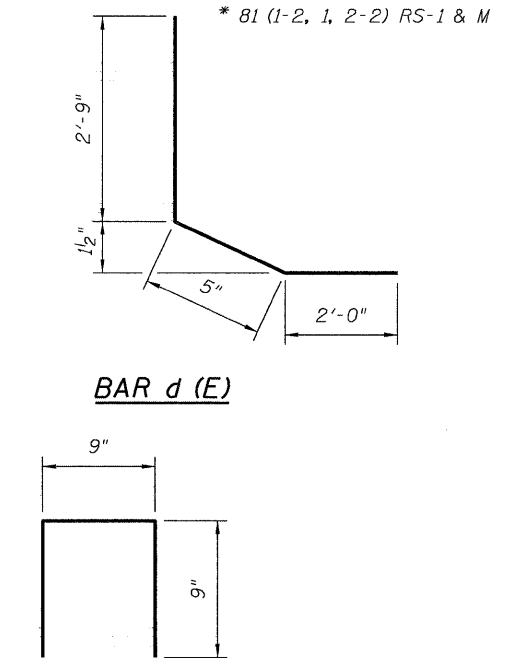
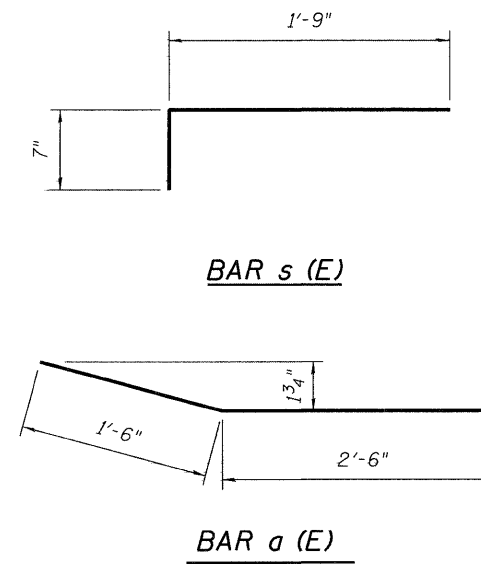
ROUTE NO.	SECTION	COUNTY	TOTAL SHEETS	SHEET NO.	SHEET NO. 4 10 SHEETS
FAI 74	*	ROCK ISLAND	246	141	
FED. ROAD DIST. NO. 7	ILLINOIS	FED. AID PROJECT-			



EXISTING PARTIAL PLAN - NORTH ABUTMENT



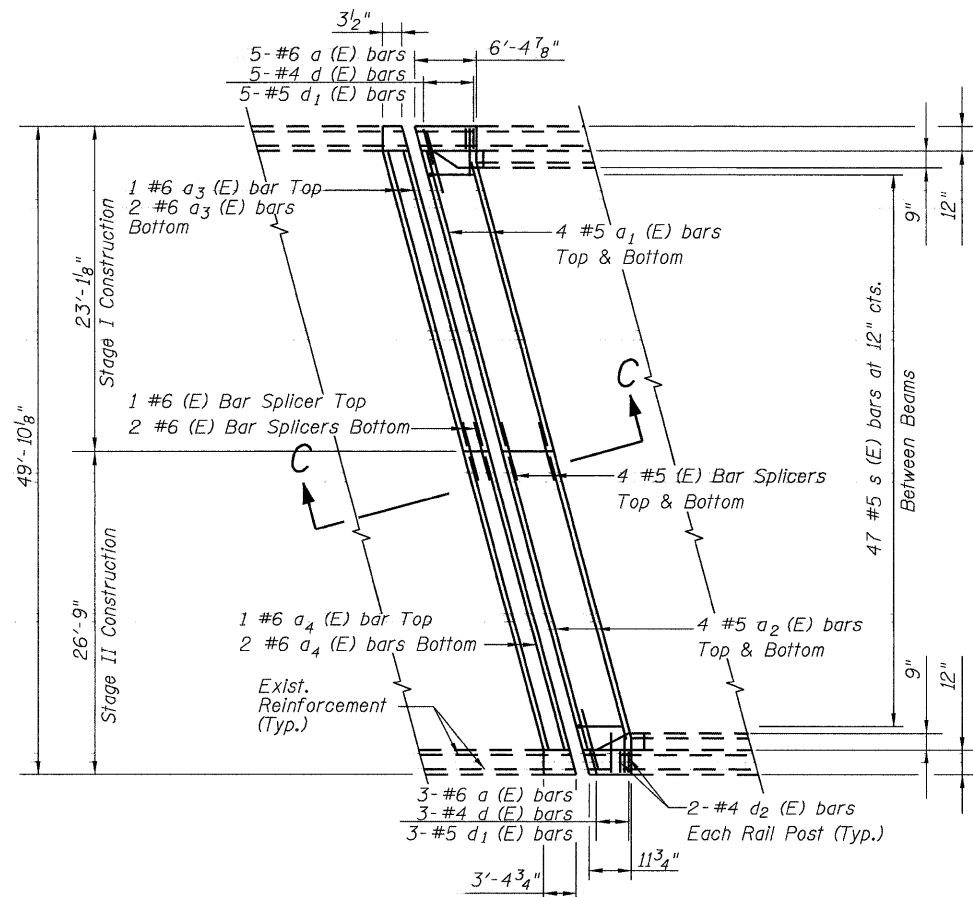
EXISTING PARTIAL PLAN - SOUTH ABUTMENT



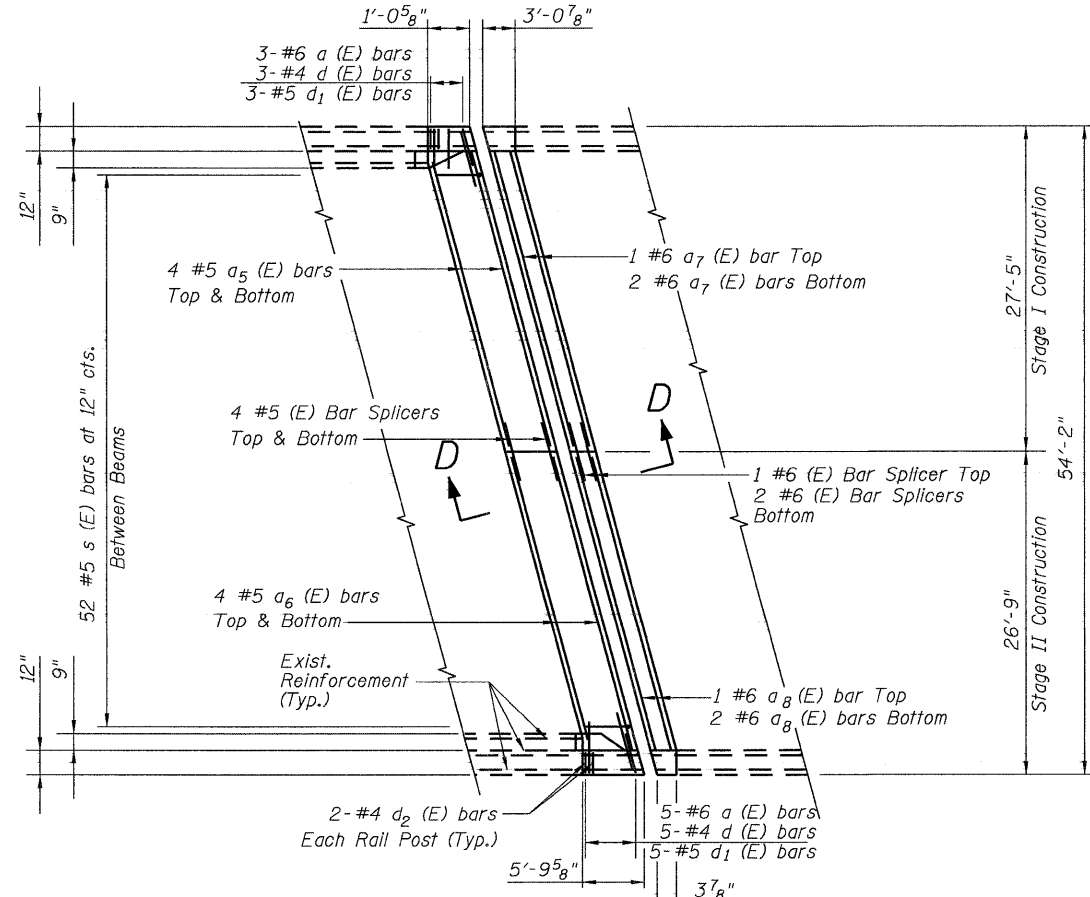
BAR d₂ (E)

BILL OF MATERIAL

BAR	NO.	SIZE	LENGTH	SHAPE
a (E)	16	#6	4'-0"	
a ₁ (E)	8	#5	42'-2"	
a ₂ (E)	8	#5	46'-3"	
a ₃ (E)	3	#6	42'-2"	
a ₄ (E)	3	#6	46'-3"	
a ₅ (E)	8	#5	46'-0"	
a ₆ (E)	8	#5	42'-6"	
a ₇ (E)	3	#6	46'-0"	
a ₈ (E)	3	#6	42'-5"	
d (E)	16	#4	4'-0"	└┘
d ₁ (E)	16	#5	2'-9"	└┘
d ₂ (E)	8	#4	2'-3"	└┘
s (E)	99	#5	2'-4"	└┘
Reinforcement Bars Epoxy Coated			Pound	2720
Concrete Removal			Cu. Yd.	29.9
Concrete Superstructure			Cu. Yd.	29.9
Bar Splicer			Each	22



PROPOSED PARTIAL PLAN - NORTH ABUTMENT



PROPOSED PARTIAL PLAN - SOUTH ABUTMENT

DESIGNED	DFM
CHECKED	DSG
DRAWN	EBS
CHECKED	DFM

For bar splicer assembly details see sheet 8 of 10.
For Rail Post Details see sheet 10 of 10.
For sections C-C and D-D see sheet 5 of 10.

LEGEND

- Concrete Removal
- Concrete Superstructure

JOINT RECONSTRUCTION DETAILS
F.A.I. 74 (OVER 19TH ST.)
ROCK ISLAND COUNTY
STRUCTURE NO. 081-0103