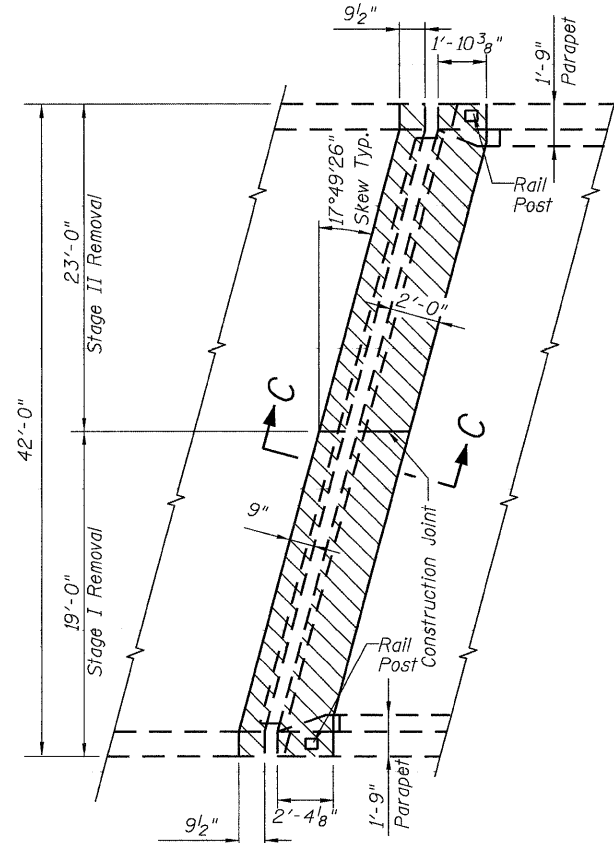


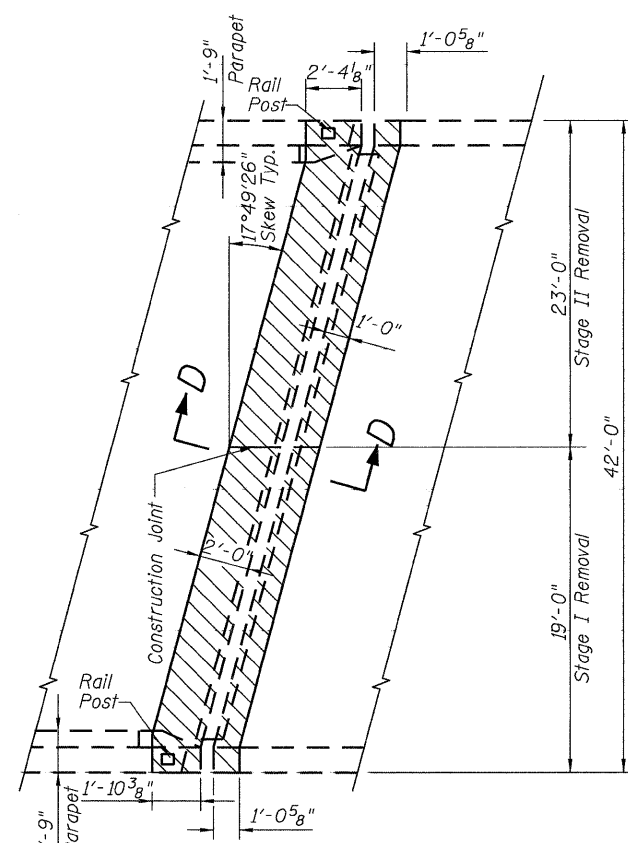
STATE OF ILLINOIS
DEPARTMENT OF TRANSPORTATION

ROUTE NO. FAI 74	SECTION *	COUNTY ROCK ISLAND	TOTAL SHEETS 246	SHEET NO. 161	SHEET NO. 4 10 SHEETS
FED. ROAD DIST. NO. 7		ILLINOIS		FED. AID PROJECT	

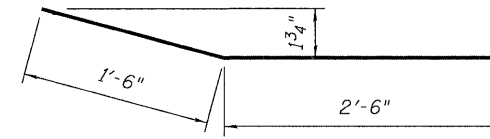
* 81 (1-2, 1, 2-2) RS-1 & M



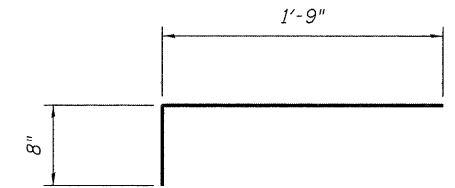
EXISTING PARTIAL PLAN - NORTH ABUTMENT



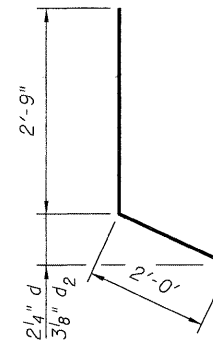
EXISTING PARTIAL PLAN - SOUTH ABUTMENT



BAR a (E)



BAR s (E)



BAR d (E) & d₂ (E)

BILL OF MATERIAL

BAR	NO.	SIZE	LENGTH	SHAPE
a (E)	10	#6	4'-0"	
a ₁ (E)	16	#5	18'-5"	
a ₂ (E)	16	#5	23'-0"	
a ₃ (E)	6	#6	18'-5"	
a ₄ (E)	6	#6	23'-0"	
d	5	#4	4'-9"	
d ₁	10	#5	2'-9"	
d ₂	5	#4	4'-9"	
d ₃	8	#4	2'-1'	
s (E)	78	#5	2'-5"	
Reinforcement Bars Epoxy Coated			Pound	1390
Concrete Removal			Cu. Yd.	12.4
Concrete Superstructure			Cu. Yd.	12.4
Bar Splicer			Each	22

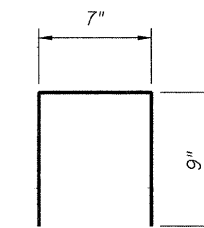
For bar splicer assembly details see sheet 8 of 10.

For Sections C-C & D-D, see sheet 5 of 10.

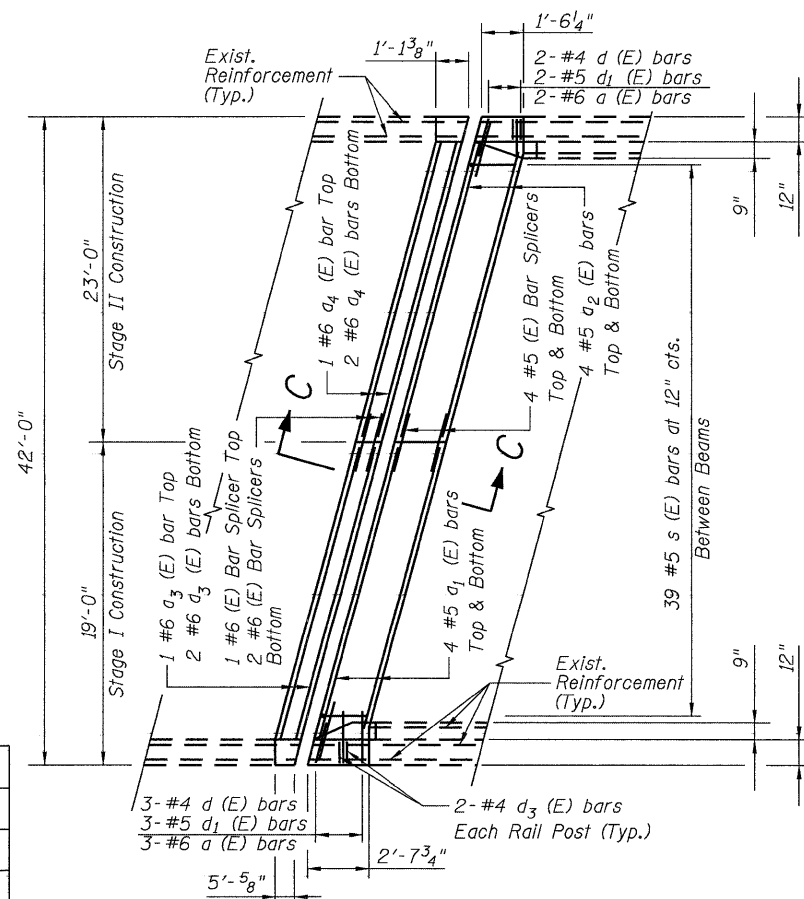
For rail post details, see sheet 10 of 10.

LEGEND

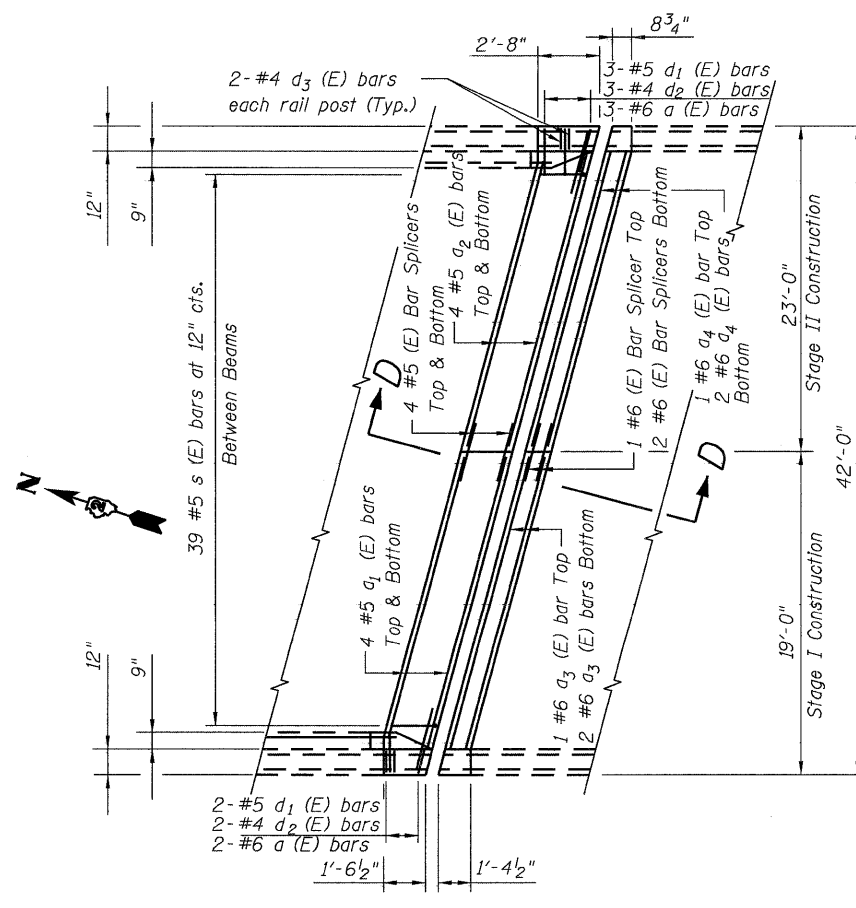
- Concrete Removal
- Concrete Superstructure



BAR d₃ (E)



PROPOSED PARTIAL PLAN - NORTH ABUTMENT



PROPOSED PARTIAL PLAN - SOUTH ABUTMENT

DESIGNED	DFM
CHECKED	DSG
DRAWN	EBS
CHECKED	DFM

JOINT RECONSTRUCTION DETAILS
F.A.I. 74 (OVER 12TH AVE.)
ROCK ISLAND COUNTY
STRUCTURE NO. 081-0102