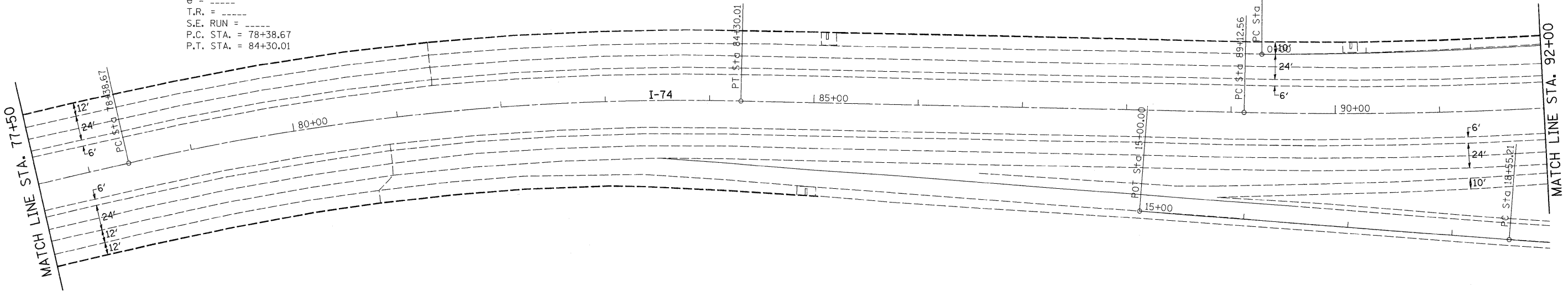
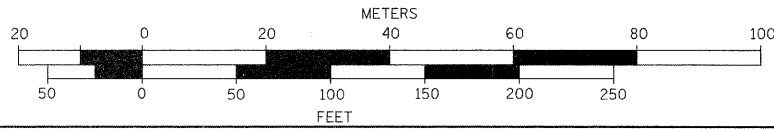


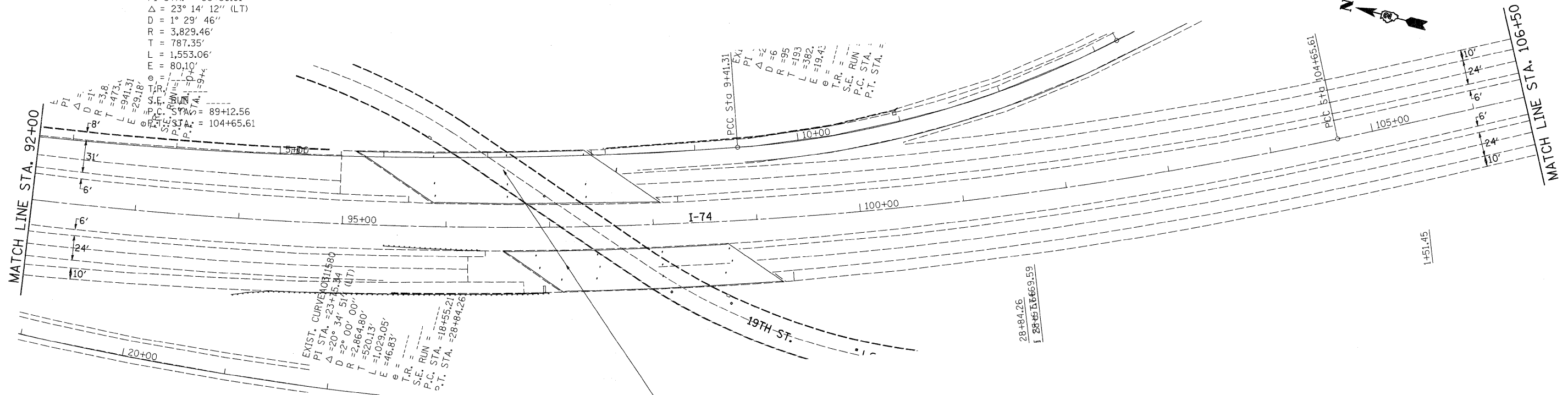
EXIST. CURVE 1200
 PI STA. = 81+35.86
 $\Delta = 14^\circ 10' 09''$ (RT)
 $D = 2^\circ 23' 46''$
 $R = 2,391.22'$
 $T = 297.19'$
 $L = 591.35'$
 $E = 18.40'$
 $e =$ -----
 T.R. = -----
 S.E. RUN = -----
 P.C. STA. = 78+38.67
 P.T. STA. = 84+30.01



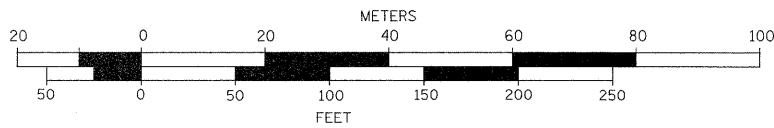
GRAPHIC SCALE



EXIST. CURVE 1210
 PI STA. = 96+99.91
 $\Delta = 23^\circ 14' 12''$ (LT)
 $D = 1^\circ 29' 46''$
 $R = 3,829.46'$
 $T = 787.35'$
 $L = 1,553.06'$
 $E = 80.10'$
 $e =$ -----
 T.R. = -----
 S.E. RUN = -----
 P.C. STA. = 89+12.56
 P.T. STA. = 104+65.61



GRAPHIC SCALE



BRIDGE REPAIR
 (SN 081-0103) NORTHBOUND OVER 19TH ST.
 (SN 081-0104) SOUTHBOUND OVER 19TH ST.

FILE NAME =
 c:\pw\work\VPWIDOT\DUNCANFA\dms33952\dms33952p1.dgn

USER NAME = duncanfa
 PLOT SCALE = 50.0000' / IN.
 PLOT DATE = Fri Feb 06 11:18:04 2009

DESIGNED -
 DRAWN -
 CHECKED -
 DATE -

REVISED -
 REVISED -
 REVISED -
 REVISED -

STATE OF ILLINOIS
 DEPARTMENT OF TRANSPORTATION

I-74

SCALE: SHEET NO. OF SHEETS STA. TO STA.

F.A.I. RTE.	SECTION	COUNTY	TOTAL SHEETS	SHEET NO.
74	811-2,1,2-2RS-I&M	ROCK ISLAND	246	46
CONTRACT NO. 64A97				
FED. ROAD DIST. NO.		ILLINOIS FED. AID PROJECT		