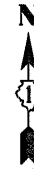
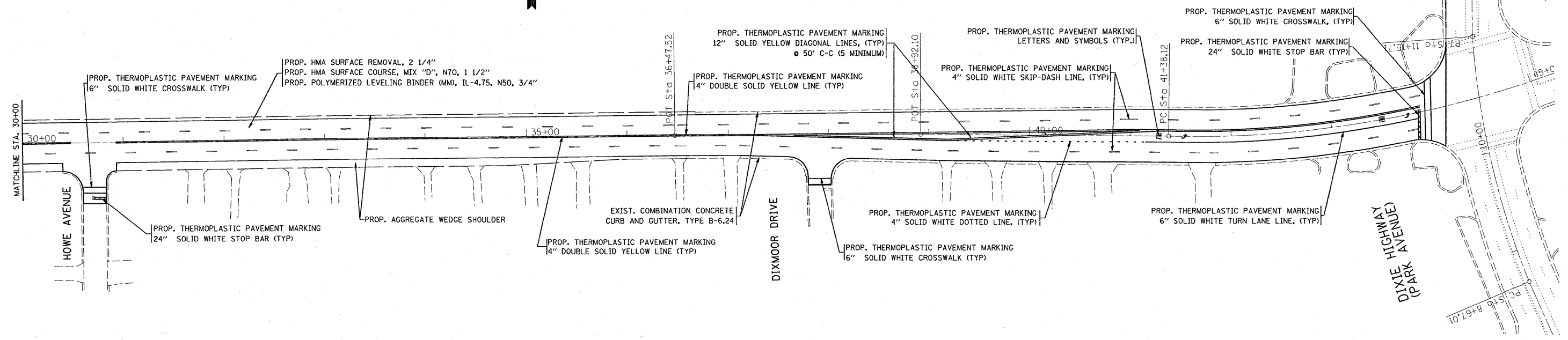


LIMIT OF IMPROVEMENT
STATION 44+14



175TH STREET (GOVERNORS HIGHWAY)



FILE NAME = c:\pw_work\PWIDOT\MIDYJA\d0100477\sh_r01.dgn	USER NAME = mdyja	DESIGNED -	REVISED -	STATE OF ILLINOIS DEPARTMENT OF TRANSPORTATION	175TH STREET (GOVERNORS HIGHWAY) (GOVERNORS HIGHWAY TO DIXIE HIGHWAY) ROADWAY PLAN	F.A. RTE. = 1618	SECTION = 144X-RS-1	COUNTY = COOK	TOTAL SHEETS = 19	SHEET NO. = 7		
PLOT SCALE = 50.0000' / IN.	CHECKED -	REVISED -	SCALE: 1"=50'			SHEET NO. OF SHEETS	STA. 30+00.00 TO STA. 57+11.20	CONTRACT NO. 62546				
PLOT DATE = 1/9/2009	DATE -	REVISED -	FED. ROAD DIST. NO. 1 (ILLINOIS) FED. AID PROJECT									