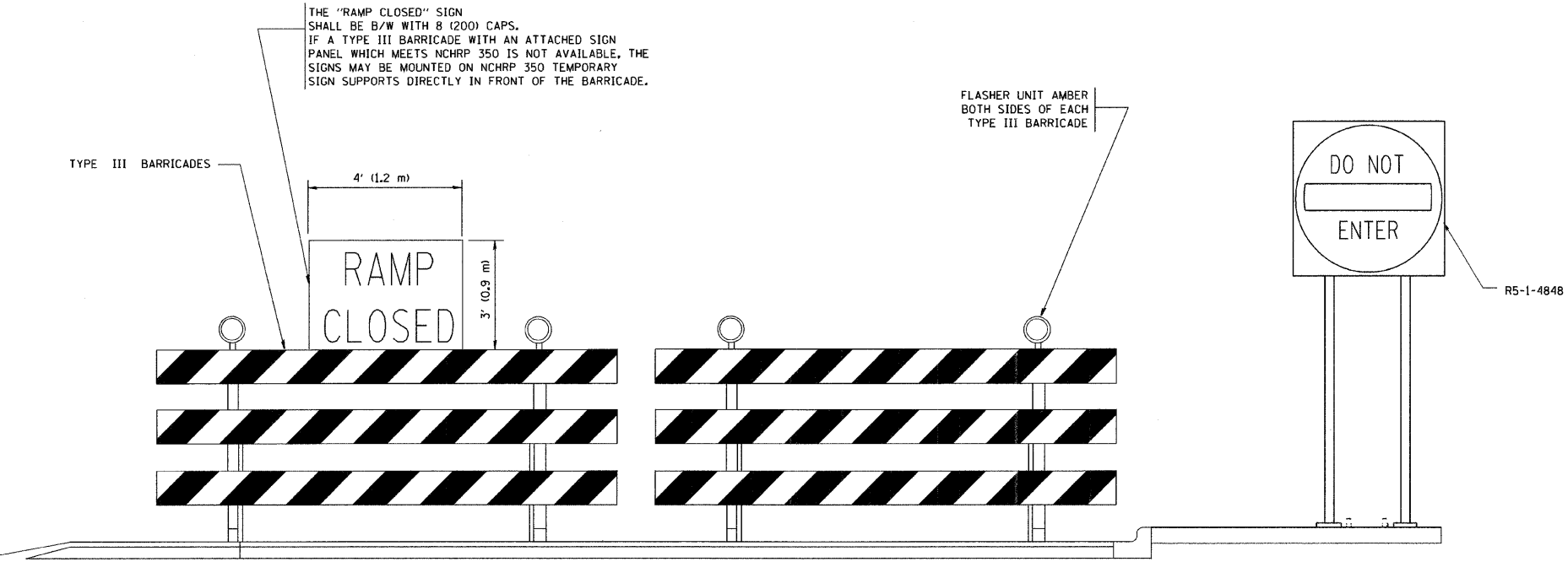
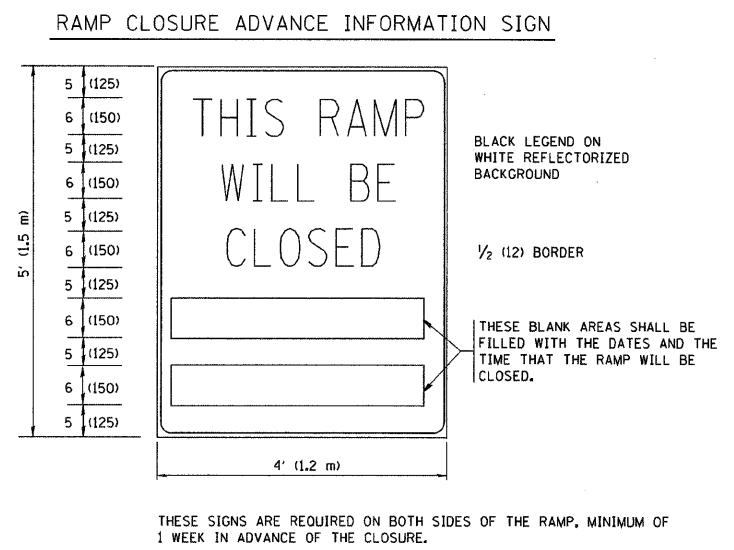
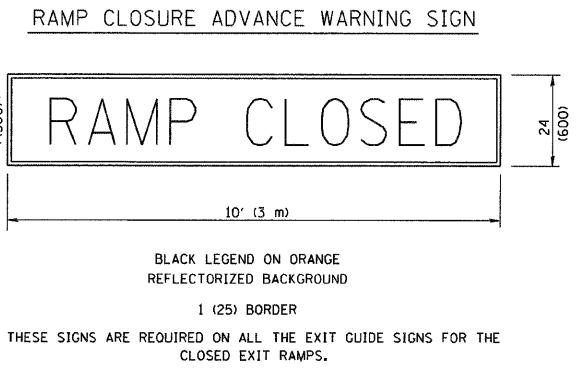
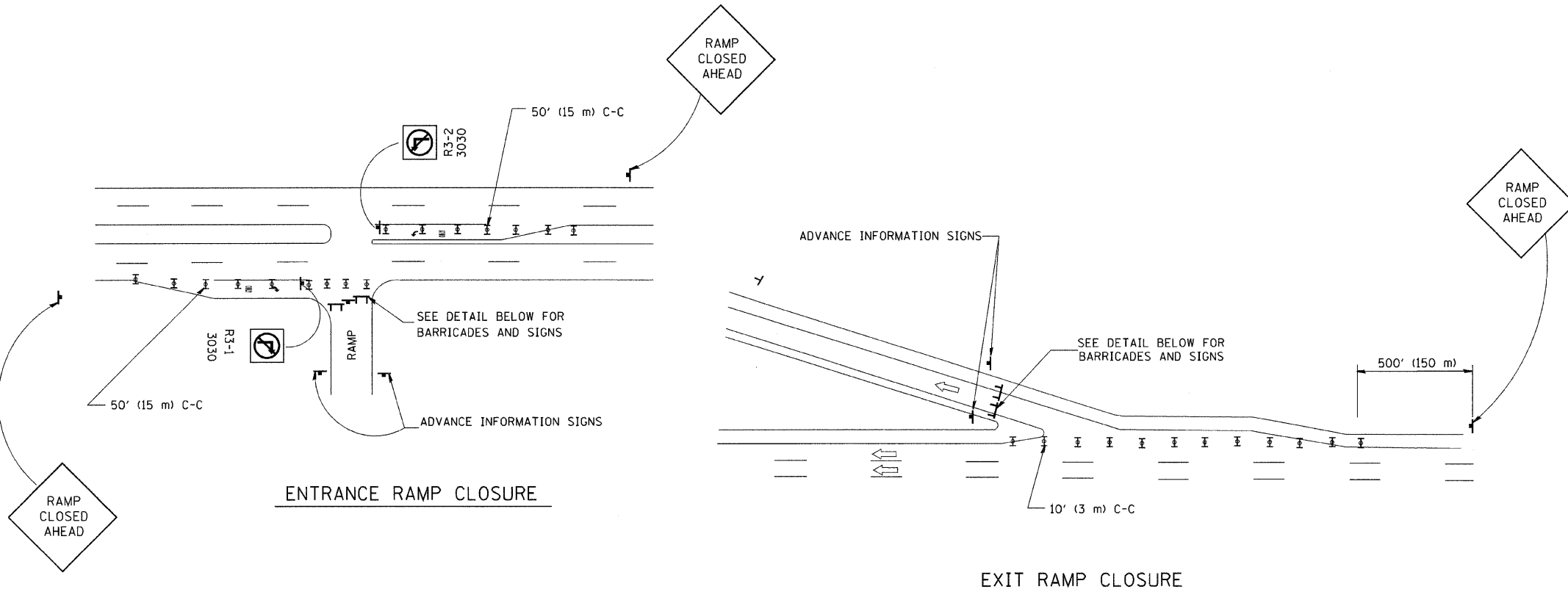


F.A. RTE.	SECTION	COUNTY	TOTAL SHEETS	SHEET NO.
			101	095
STA.		TO STA.		
FED. ROAD DIST. NO.	ILLINOIS	FED. AID PROJECT		



- GENERAL NOTES:
1. CONES MAY BE SUBSTITUTED FOR DRUMS OR TYPE II BARRICADES DURING DAY OPERATIONS. CONES SHALL BE A MINIMUM OF 28 (700) HIGH.
 2. STEADY BURN LIGHTS WILL NOT BE REQUIRED FOR DAY OPERATIONS.
 3. A FLAGGER SHALL BE POSITIONED AT EACH CLOSED RAMP THAT IS OPEN TO CONSTRUCTION VEHICLES.
 4. ALL ROUTE MARKERS AND TRAILBLAZER ASSEMBLIES WHICH DIRECT MOTORISTS TO A CLOSED ENTRANCE RAMP SHALL BE COVERED.
 5. THE SIGNING AND BARRICADING WHICH IS REQUIRED BY THIS DETAIL SHALL BE INCLUDED IN THE COST OF TRAFFIC CONTROL AND PROTECTION (EXPRESSWAYS).
 6. AUTHORIZATION FROM THE DISTRICT'S BUREAU OF TRAFFIC IS REQUIRED FOR ALL RAMP CLOSURES.
 7. THE RAMP CLOSURE ADVANCE INFORMATION SIGNS SHALL BE ERECTED IF THE CLOSURE TIME EXCEEDS TWENTY-FOUR (24) HOURS. ADDITIONAL ADVANCE WARNING SIGNS ON EXIT GUIDE SIGNING WILL BE REQUIRED FOR EXIT RAMP CLOSURES THAT EXCEED TWENTY FOUR (24) HOURS IN LENGTH.

ALL DIMENSIONS ARE IN INCHES (MILLIMETERS) UNLESS OTHERWISE SHOWN.

SYMBOLS

	TYPE II BARRICADE, DRUM OR VERTICAL BARRICADE WITH STEADY BURN MONO-DIRECTIONAL LIGHT
	TYPE III BARRICADE WITH FLASHING LIGHT

REVISIONS

NAME	DATE
DWS	2-83
DWS	1/90
DWS	9/94
DWS	12/94
DWS/JAF	12/02
JAF	2/06
SPB	1/07
Revise devices to meet NCHRP 350	4/03

ILLINOIS DEPARTMENT OF TRANSPORTATION

FREWAY ENTRANCE AND EXIT RAMP CLOSURE DETAILS

SCALE: NONE

DRAWN BY: _____
CHECKED BY: _____

PLOT DATE = 3/6/2007
FILE NAME = K:\dashed\0808.dgn
PLOT SCALE = 500,000 / 1 IN.
USER NAME = bward