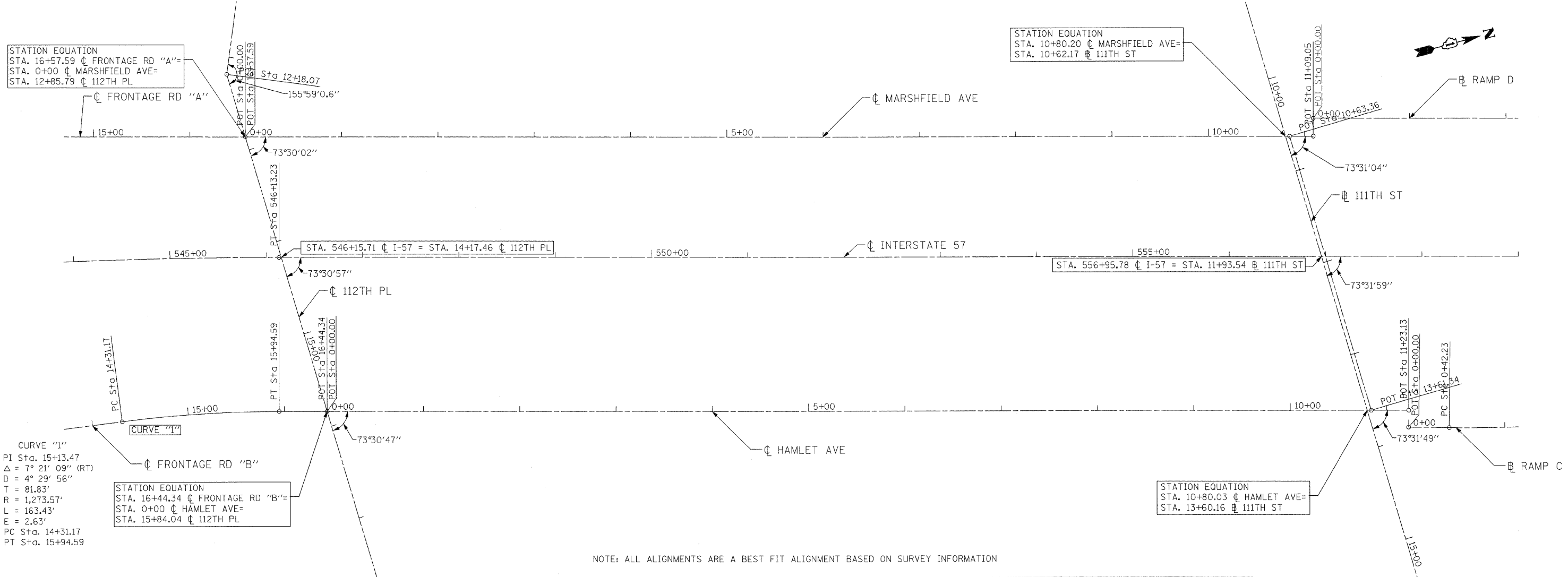


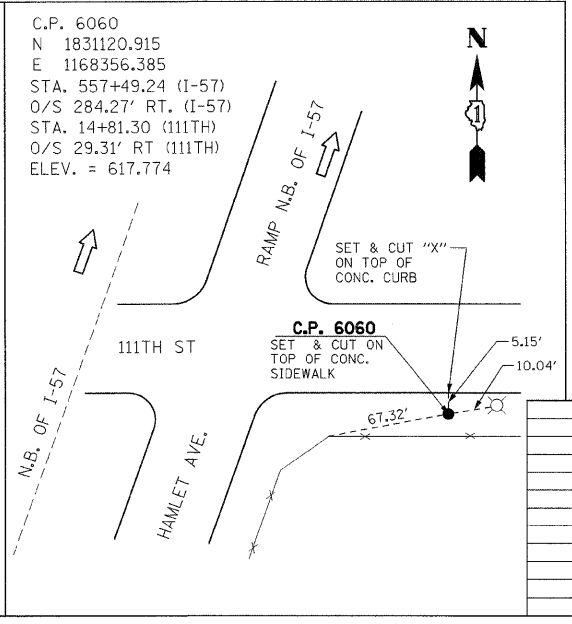
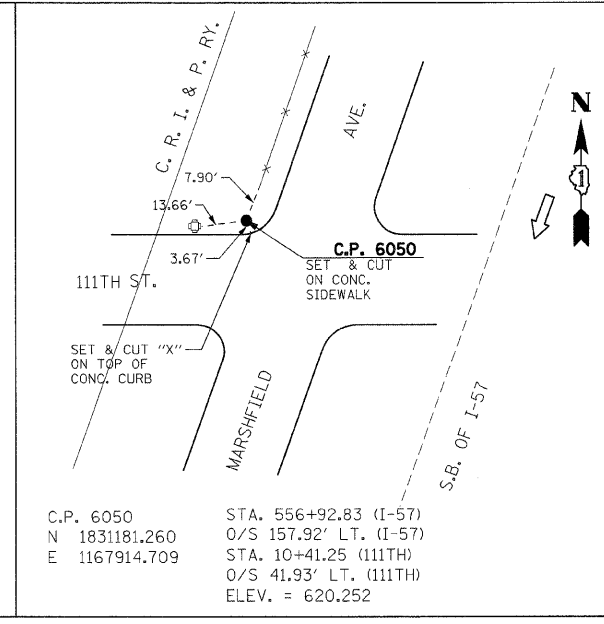
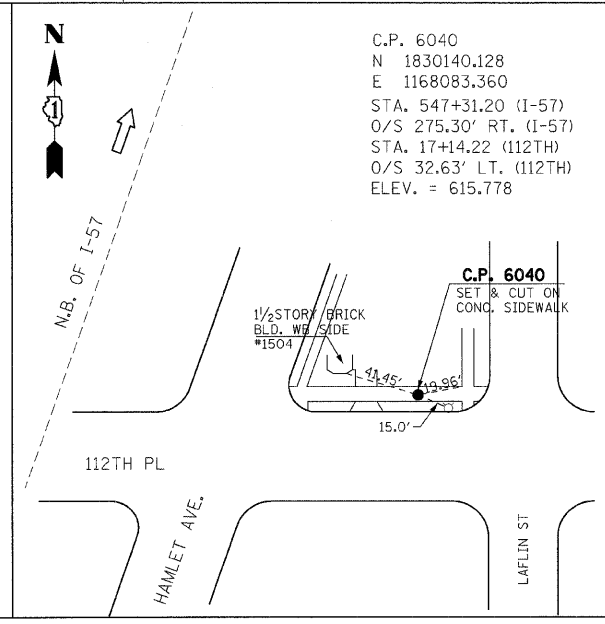
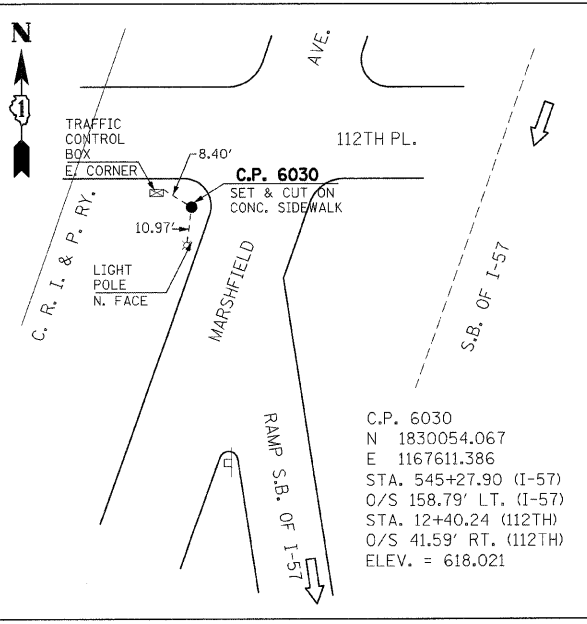
F.A.I. RTE.	SECTION	COUNTY	TOTAL SHEETS	SHEET NO.
57	1920.1B-R	COOK	101	015
STA.		TO STA.		
FED. ROAD DIST. NO. 1		ILLINOIS	FED. AID PROJECT	
CONTRACT NO. 62533				

HAMLET AVE AND MARSHFIELD AVE TIE DATA

FRONTAGE ROAD	FRONTAGE RD STA.	MAINLINE STA.	MAINLINE O/S	NORTHING	EASTING
MARSHFIELD AVE	0+00.00	545+79.10	126.36' LT	1,830,096.788760	1,167,655.879998
HAMLET AVE	0+00.00	546+62.97	159.73' RT	1,830,104.248481	1,167,954.038967



HECHTBR  
 1-6-2009, 13:55:56  
 I:\PROJECTS\1920.1B-R\1920.1B-R-015.DWG  
 1-6-2009, 13:55:56  
 I:\PROJECTS\1920.1B-R\1920.1B-R-015.DWG



BENCHMARK DESCRIPTIONS

- BENCH MARK LOCATED AT THE INTERSECTION OF WEST 112TH PLACE, WEST MONTERY AVENUE AND SOUTH MARSHFIELD AVE., BENCH MARK IS A CROSS NOTCH ON WEST FLANGE BOLT OF FIRE HYDRANT LOCATED AT THE NORTHWEST CORNER OF INTERSECTION, ELEVATION= 619.17 FEET.
- BENCH MARK LOCATED AT THE INTERSECTION OF WEST 111TH ST AND S. HAMLET AVE. BENCH MARK IS A CROSS-NOTCH ON NORTH FLANGE BOLT OF THE FIRE HYDRANT LOCATED AT THE SOUTHEAST CORNER OF INTERSECTION, ELEVATION = 619.37 FEET.

REVISIONS	
NAME	DATE

ILLINOIS DEPARTMENT OF TRANSPORTATION  
 112TH PLACE OVER  
 F.A.I ROUTE 57 (INTERSTATE 57)

**ALIGNMENT & TIES**

SCALE: 1"=50'  
 DATE: 01/16/09  
 DRAWN BY: BRH  
 CHECKED BY: ACL

TENG & ASSOCIATES, INC.  
 ENGINEERS/ARCHITECTS/PLANNERS  
 205 N. MICHIGAN AVE., CHICAGO, IL 60601  
 TELEPHONE: 312/616-0000