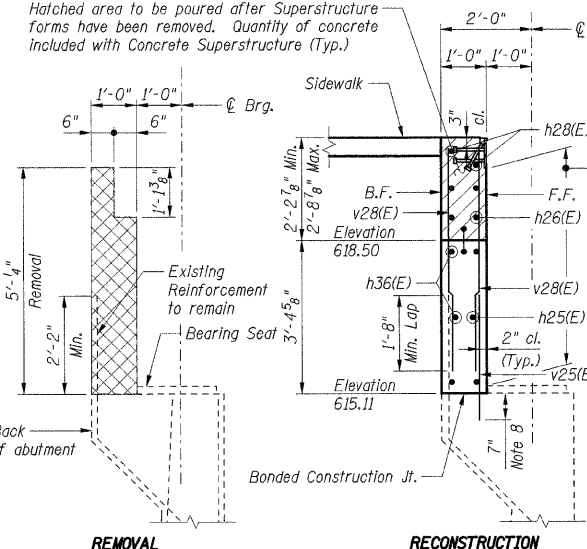
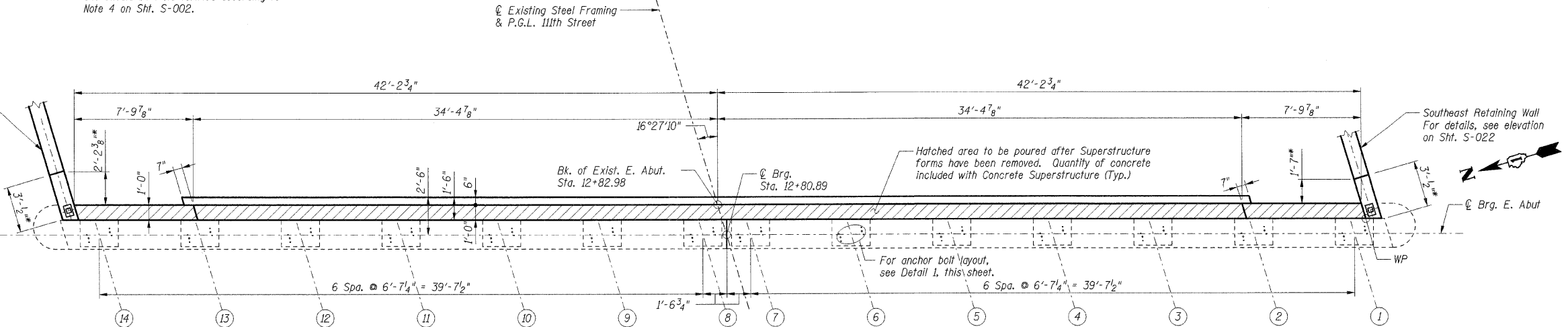
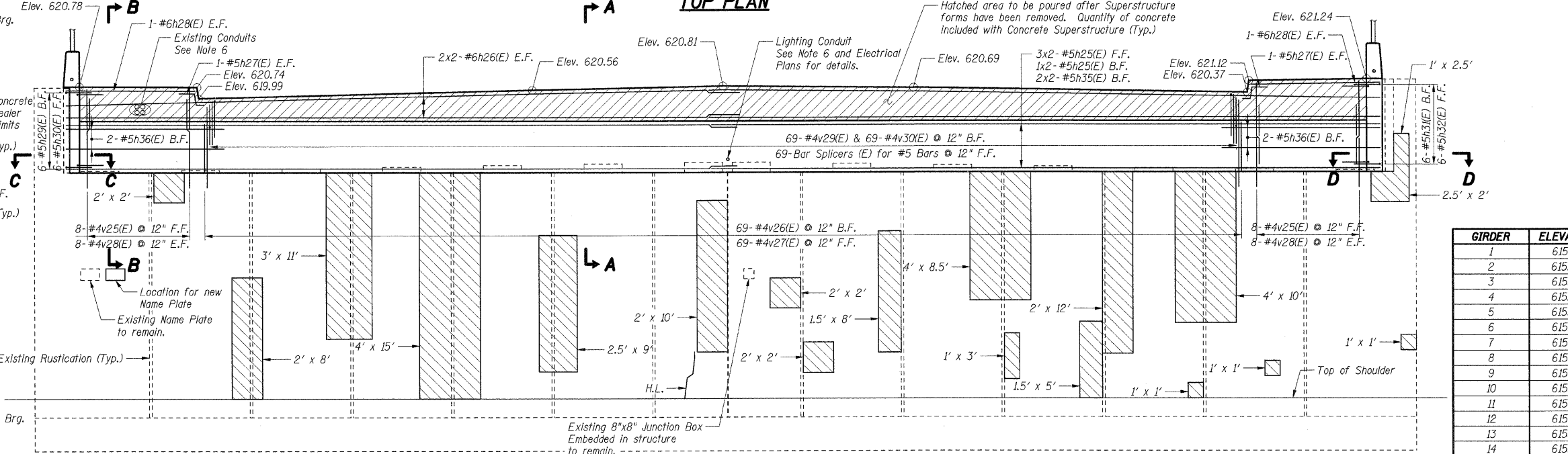


\* Dimensions related to existing conditions have been developed from record plan data and should be field verified according to Note 4 on Sht. S-002.

**DETAIL 1**  
Burn existing anchor bolts flush with existing concrete surface. Grind existing anchor bolt smooth and seal with epoxy. Cast is included with Jack and Remove Existing Bearings.  
Northeast Retaining Wall For details, see elevation on Sht. S-021



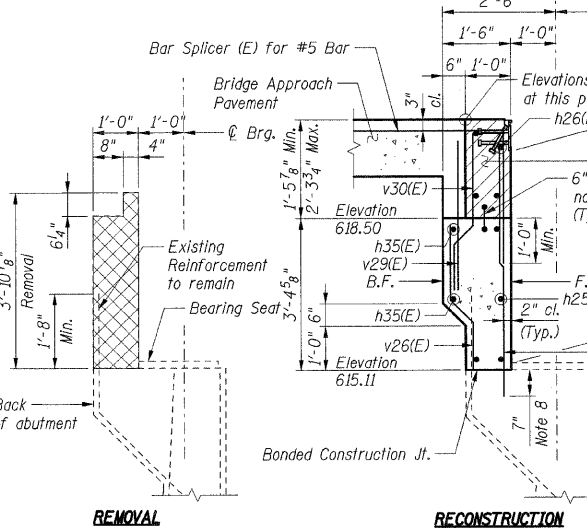
**SECTION B-B**



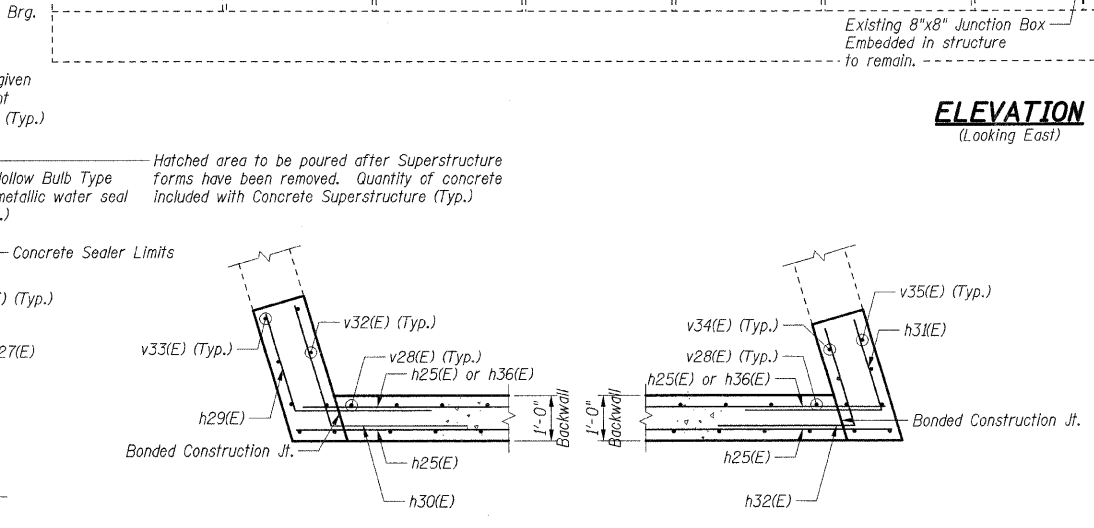
**ELEVATION**  
(Looking East)

| GIRDER | ELEVATION |
|--------|-----------|
| 1      | 615.21    |
| 2      | 615.26    |
| 3      | 615.36    |
| 4      | 615.47    |
| 5      | 615.57    |
| 6      | 615.68    |
| 7      | 615.78    |
| 8      | 615.78    |
| 9      | 615.68    |
| 10     | 615.58    |
| 11     | 615.48    |
| 12     | 615.38    |
| 13     | 615.28    |
| 14     | 615.24    |

**BEARING SEAT ELEVATIONS**  
(Elevations based off record plans. For information only.)



**SECTION A-A**



**SECTION C-C**

**SECTION D-D**

- Notes:**
- Work this sheet with Shts. S-021 & S-022.
  - Reinforcement bars designated (E) shall be epoxy coated.
  - Bars indicated thus 30 x 2-#5 etc. indicates 30 lines of bars with 2 lengths per line.
  - All edges shall have standard 3/4" chamfers except as noted.
  - E.F. indicates Each Face  
F.F. indicates Front Face  
B.F. indicates Back Face
  - Cost of all sleeves, grout and associated work required for extending conduit through backwall shall be included with Concrete Structures.
  - Existing reinforcement bars to remain shall be cleaned and incorporated into new construction with a minimum projection length as shown. Bars with insufficient projection or with 10% or more section loss shall be removed flush to the concrete removal line and replaced in kind by drilling and grouting new bars of equivalent size, the cost of which is included with Concrete Removal.
  - Reinforcement bars shall be epoxy grouted according to Section 584 of the Standard Specifications. The grout and method of application shall be approved by the Department. Cost included with Reinforcement Bars, Epoxy Coated.
  - For bar splicer details, see Sht. S-024.
  - Crack widths are 1/8" ± 1/16" unless otherwise noted.
  - Girders shall be supported during concrete repairs. Cost shall be included with Jack and Remove Existing Bearings.

| Bar Size | Min. Lap |
|----------|----------|
| #4       | 1'-11"   |
| #5       | 2'-5"    |
| #6       | 2'-10"   |

**LEGEND**  
 Concrete Removal  
 Structural Repair of Concrete, Depth Equal to or Less Than 5"  
 H.L. Hairline Crack - Not to be Sealed

SHT. S-020

| REVISIONS | NAME | DATE |
|-----------|------|------|
|           |      |      |
|           |      |      |
|           |      |      |

ILLINOIS DEPARTMENT OF TRANSPORTATION  
 F.A.I. ROUTE 57 (INTERSTATE 57)  
 111TH STREET BRIDGE DECK REPLACEMENT  
 111th STREET OVER I-57  
 SN 016-0989 STA. 556+99.89  
 COOK COUNTY  
**EAST ABUTMENT**  
 DATE: 01/16/09  
 DRAWN BY: TMH  
 CHECKED BY: JLR  
**TENG**  
TENG & ASSOCIATES, INC.  
 ENGINEERS/ARCHITECTS/PLANNERS  
 205 N. MICHIGAN AVE., CHICAGO, IL 60601  
 TELEPHONE 312.618.0000

\A\T001\CDON... \A\T001\CDON... \A\T001\CDON... \A\T001\CDON... \A\T001\CDON... \A\T001\CDON... \A\T001\CDON... \A\T001\CDON... \A\T001\CDON... \A\T001\CDON...  
 2-27-2009, 14:55:53  
 pen: Table: NA