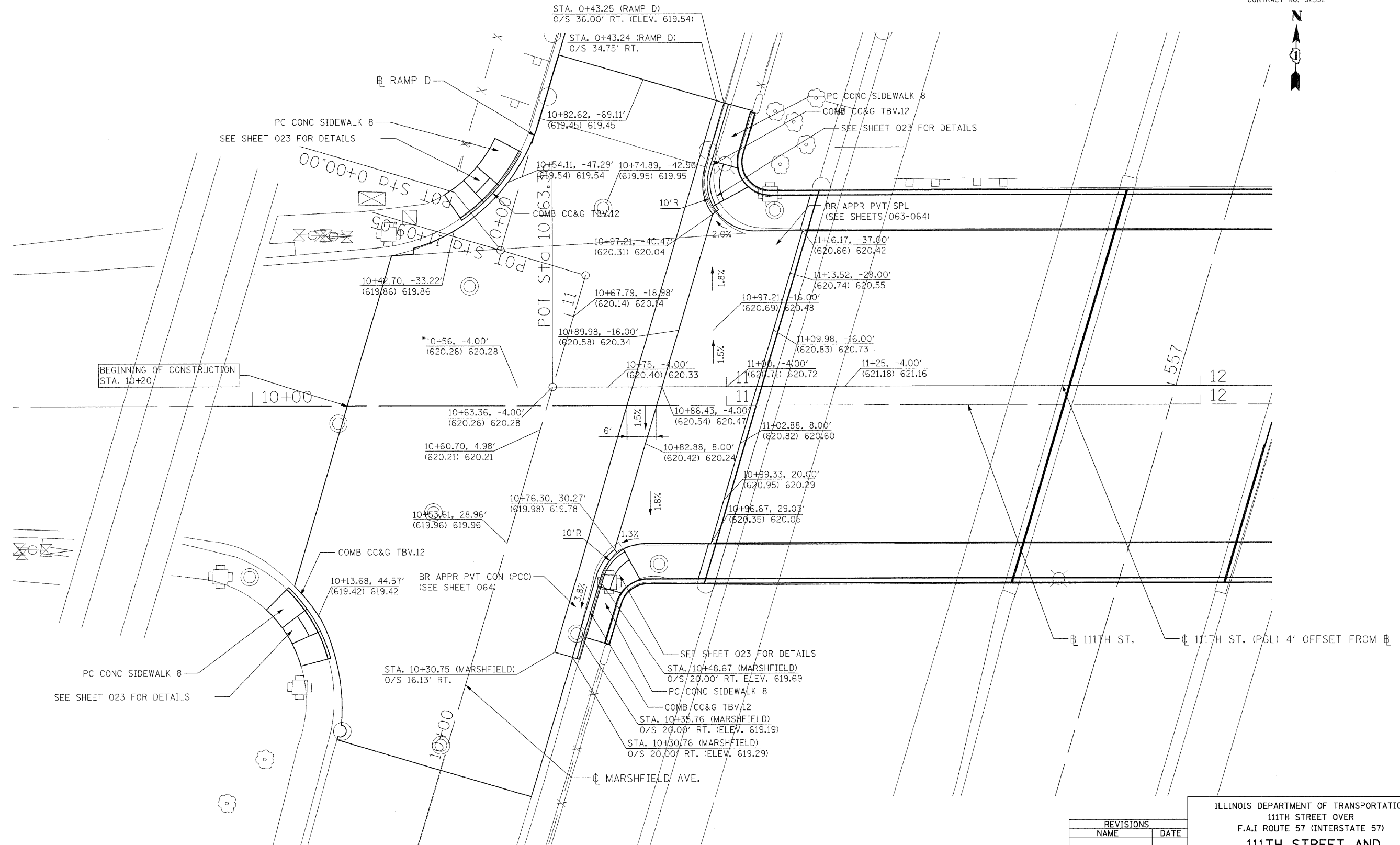


| | | | | |
|-----------------------|-----------|----------|------------------|-----------|
| F.A.I. RTE. | SECTION | COUNTY | TOTAL SHEETS | SHEET NO. |
| 57 | 2021.1B-R | COOK | 101 | 021 |
| STA. | | TO STA. | | |
| FED. ROAD DIST. NO. 1 | | ILLINOIS | FED. AID PROJECT | |
| CONTRACT NO. 62532 | | | | |



PROPOSED INTERSECTION GRADING PLAN
FOR 111TH STREET AND MARSHFIELD AVE.

NOTE: ALL STATIONING MEASURED OFF 111TH STREET UNLESS OTHERWISE NOTED.
 * CONTRACTOR SHALL VERIFY EXISTING ELEVATION PRIOR TO CONSTRUCTION

LEGEND

| |
|----------------------------|
| STATION, OFFSET |
| (EXIST. ELEV.) PROP. ELEV. |

| REVISIONS | |
|-----------|------|
| NAME | DATE |
| | |
| | |
| | |
| | |
| | |
| | |
| | |
| | |
| | |

ILLINOIS DEPARTMENT OF TRANSPORTATION
 111TH STREET OVER
 F.A.I ROUTE 57 (INTERSTATE 57)
**111TH STREET AND
 MARSHFIELD AVE
 INTERSECTION GRADING PLAN**
 SCALE: 1"=10'
 DATE: 01/16/09
 DRAWN BY: BRH
 CHECKED BY: ACL
TENG
TENG & ASSOCIATES, INC.
 ENGINEERS/ARCHITECTS/PLANNERS
 205 N. MICHIGAN AVE., CHICAGO, IL 60601
 TELEPHONE: 312/616-0000

\\AL\T00N8\DOCN...ATP000\DOCN...AT100N8\DOCN...SUROO\SV\DOCN...RDW00TE\DOCN
 HECHTBR
 1-16-2009, 11:42:24
 F:\DOCUMENT\930860\CIVIL\DOCN\RDW00SV\DOCN
 1 2 3 4 5 6 7 8 9 10 11 12 13 14 15 16 17 18 19 20 21 22 23 24 25 26 27 28 29 30 31 32 33 34 35 36 37 38 39 40 41 42 43 44 45 46 47 48 49 50 51 52 53 54 55 56 57 58 59 60 61 62