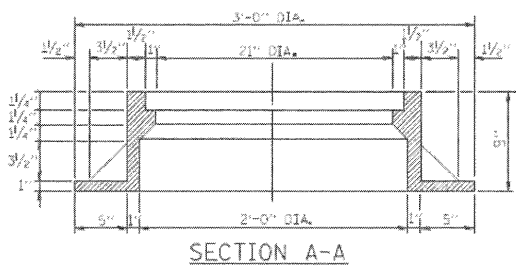
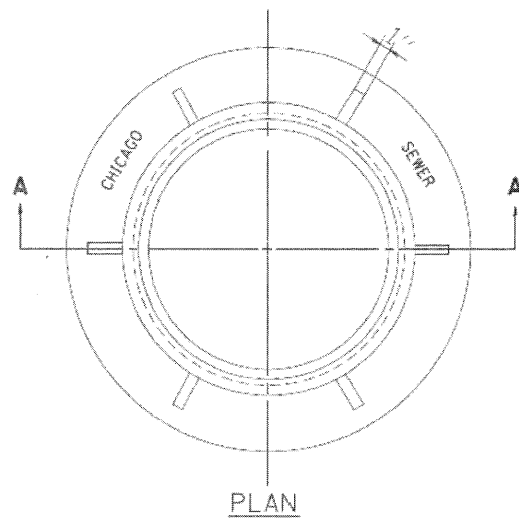
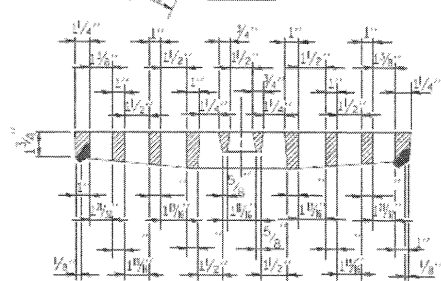
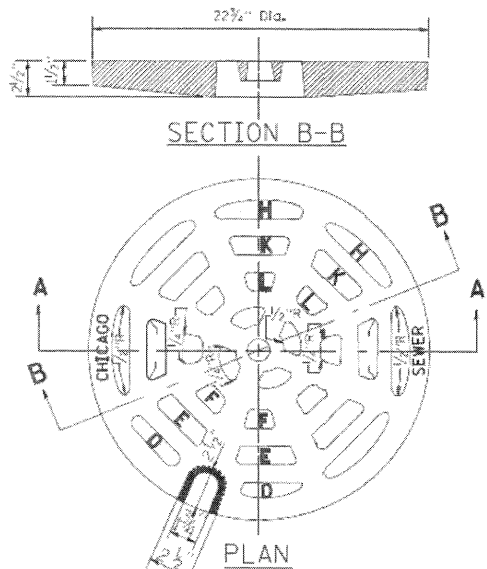


F.A. RTE.	SECTION	COUNTY	TOTAL SHEETS	SHEET NO.
55	1717.2-3B-R	COOK	114	107
STA. TO STA.		ILLINOIS FED. AID PROJECT		

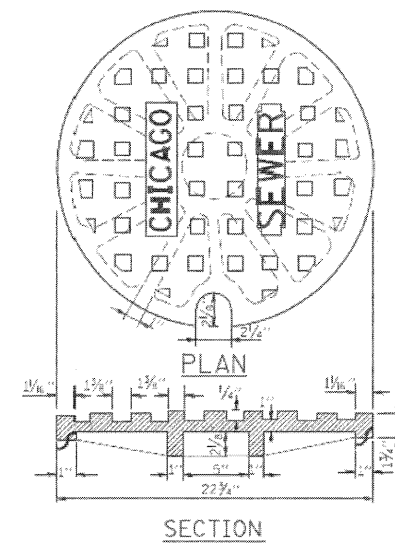
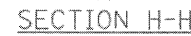
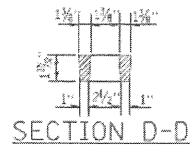


NOTE: METAL PLATES MUST BE FURNISHED FOR PERFORATED LIDS ON MANHOLES

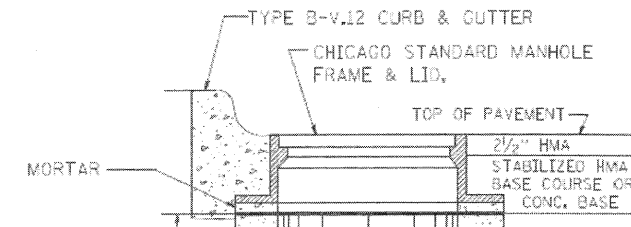
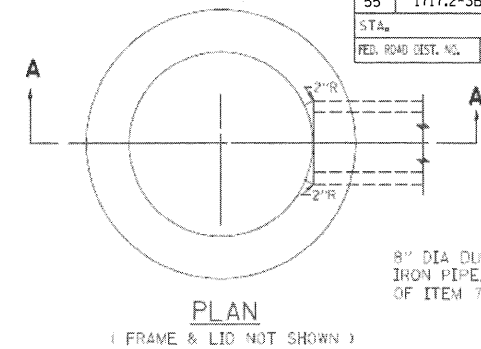
**CHICAGO STANDARD MANHOLE FRAME**  
SCALE: 1/2"=1'-0"  
MATERIAL: CAST IRON



**PERFORATED LID FOR CATCH BASINS & MANHOLES**  
SCALE: 2"=1'-0"  
MATERIAL: CAST IRON



**SOLID LID FOR MANHOLES**  
SCALE: NONE  
MATERIAL: CAST IRON



24" DIA. PRECAST CONC. RING  
SEE SPECIFICATIONS, PART 2, ART 212.3

8" DIA. DUCTILE IRON PIPE SHALL BE USED FOR CONNECTION TO CATCH BASIN PIPE TO BE LAID ON A MINIMUM GRADE OF 1%

REINF. CONC. BASE CAST AS INTEGRAL PART OF 24" DIA. PRECAST CONC. RING  
6" MINIMUM GRANULAR EMBEDMENT UNDER ALL INLETS. FURNISHING AND INSTALLING GRANULAR EMBEDMENT SHALL BE INCLUDED IN THE UNIT PRICE BID FOR ITEM 12

**STANDARD INLETS**  
SCALE: 1"=1'-0"  
ITEM 12

THIS INLET DETAIL IS SOMETIMES REFERRED TO AS "CHICAGO STANDARD INLET, TYPE A"

NOTE:  
INLETS SHALL NOT BE CONSTRUCTED UNLESS IT IS IMPOSSIBLE TO CONSTRUCT A CATCH BASIN. THE CONTRACTOR SHALL HAVE THE DEPARTMENT OF SEWERS APPROVAL BEFORE CONSTRUCTING INLETS.

CITY OF CHICAGO  
DEPARTMENT OF SEWERS  
ENGINEERING DIVISION

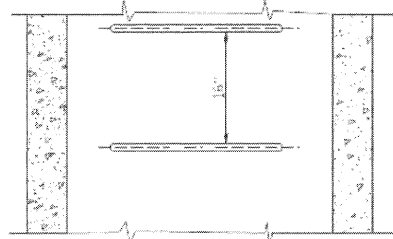
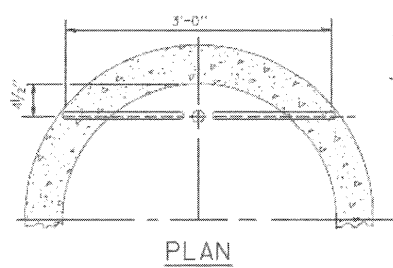
ILLINOIS DEPARTMENT OF TRANSPORTATION

CITY OF CHICAGO  
CATCH BASIN, INLET AND  
MANHOLE DETAILS

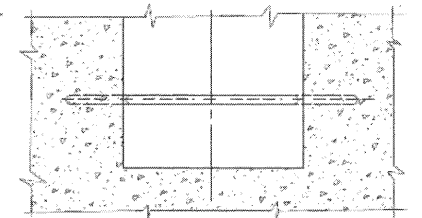
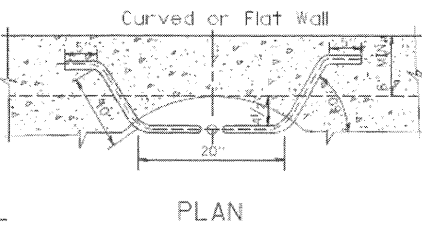
SCALE: VERT. NONE  
HORIZ.

DRAWN BY  
CHECKED BY

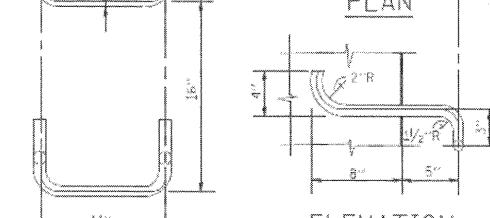
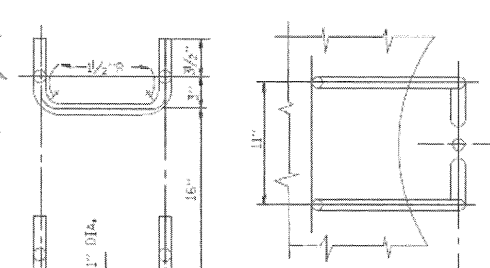
REVISIONS	
NAME	DATE
M. GOMEZ	01/25/01



**TYPE X**  
SCALE: 1"=1'-0"

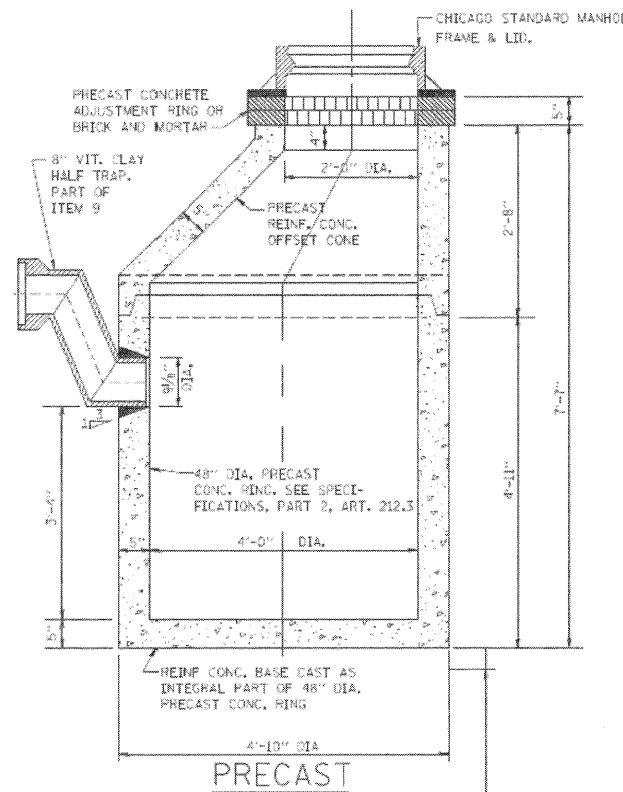


**TYPE Y**  
SCALE: 1"=1'-0"



**HANDHOLD-TYPE Z RUNG**  
SCALE: 1/2"=1'-0"

ALL LADDER RUNGS SHALL BE ALUMINUM OR GALVANIZED WROUGHT IRON AS SPECIFIED IN THE SPECIFICATIONS, PART 2, ARTICLE 214.2. RUNGS SHALL BE 1" DIAMETER OR OF A SHAPE HAVING AN EQUIVALENT CROSS-SECTIONAL AREA.



NOTE:  
6" MINIMUM GRANULAR EMBEDMENT UNDER ALL CATCH BASINS

**STANDARD CATCH BASINS**  
SCALE: 3/4"=1'-0"  
ITEM 9