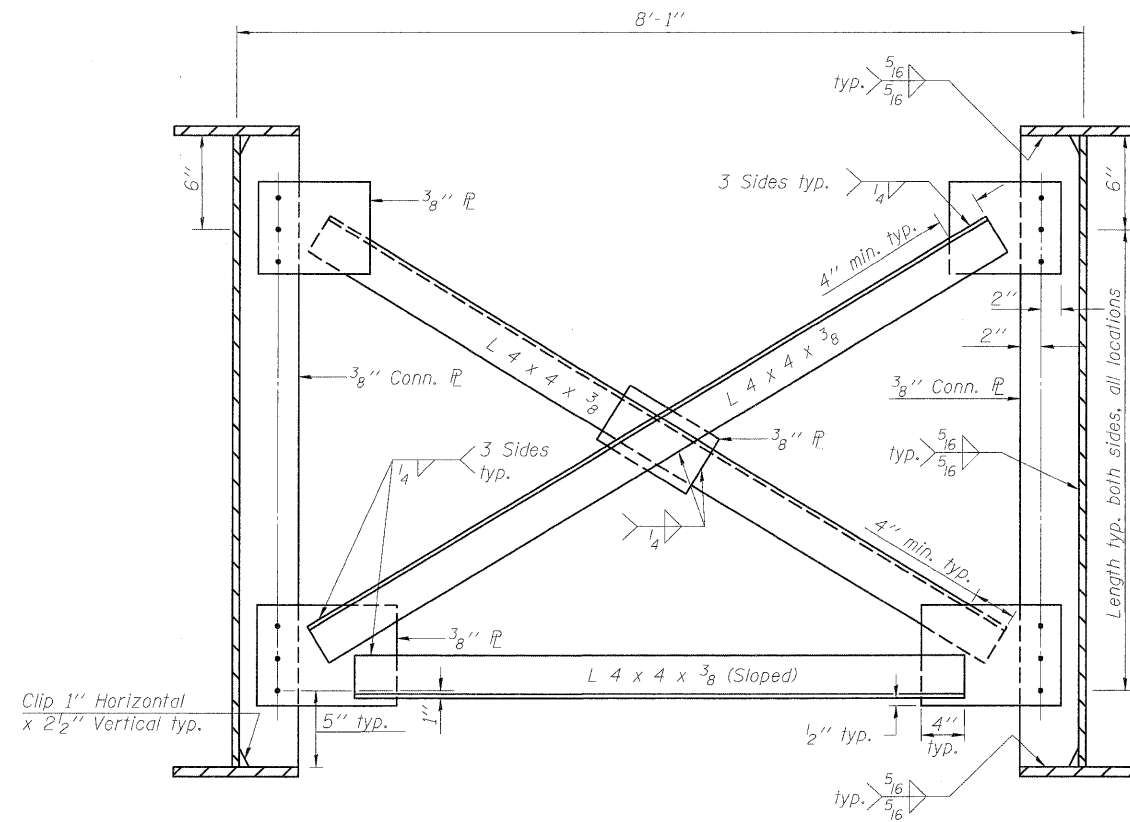


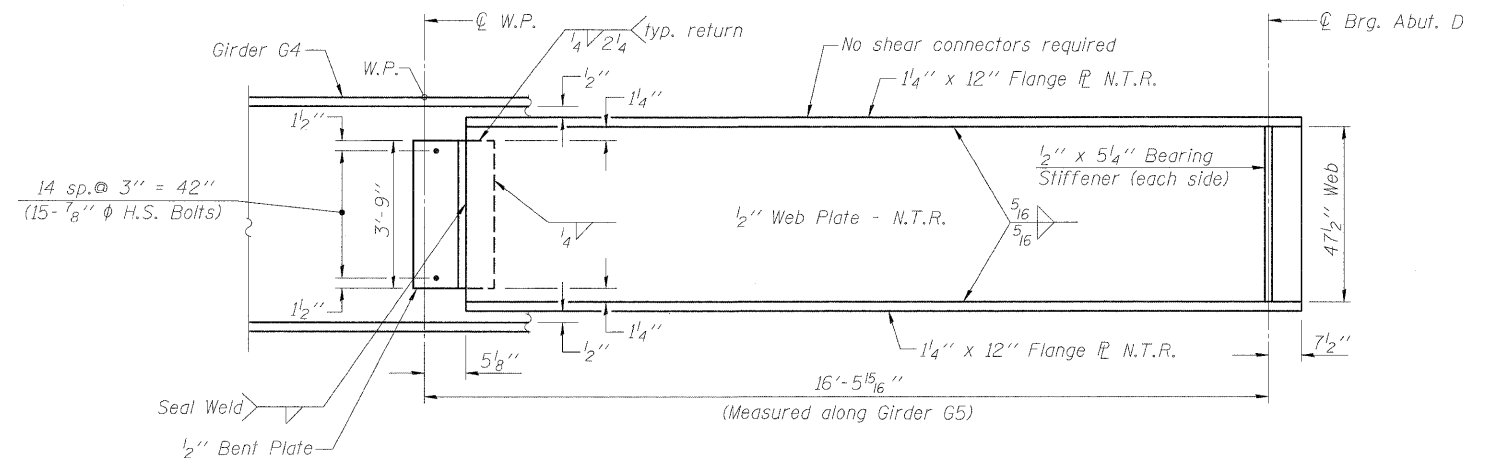
**END CROSS FRAME ECF1, ECF2 and ECF3**



**INTERIOR CROSS FRAME**

**NOTES:**

1. Bolts  $\frac{3}{4}$ "  $\phi$ , holes  $\frac{15}{16}$ "  $\phi$ . Provide 2 hardened washers for each bolt.
2. Place end cross frame with channel flanges and outstanding angle legs pointing away from abutment backwall.
3. All cross frames shall be installed as steel is erected and secured with erection pins and bolts except as otherwise noted. Individual cross frames or diaphragms at supports may be temporarily disconnected to install bearing anchor rods.
4. All structural steel for cross frames shall be AASHTO M270 Grade 36.



**GIRDER G5 ELEVATION**

FILE NAME = 0161093-SB12.dgn 	DESIGNED - LSD	REVISED -	<b>STATE OF ILLINOIS</b> <b>DEPARTMENT OF TRANSPORTATION</b>	<b>STRUCTURAL STEEL DETAILS II</b> F.A.P. 392 FRANKLIN CONNECTOR (AT I-55 FRONTAGE ROAD B) STRUCTURE NO. 016-1093		F.A.P. RTE. 392	SECTION 1717-2-3B-R	COUNTY COOK	TOTAL SHEETS 114	SHEET NO. 90
	DRAWN - JJJ CHECKED - TNS PLOT DATE = 1/12/2009	DATE - 1/13/09		REVISED - REVISED - REVISED - REVISED -	SCALE: NTS SHEET NO. SB12 OF SB24 SHEETS STA. 85+60.68	FED. ROAD DIST. NO. 7 ILLINOIS FED. AID PROJECT		CONTRACT NO. 62197		