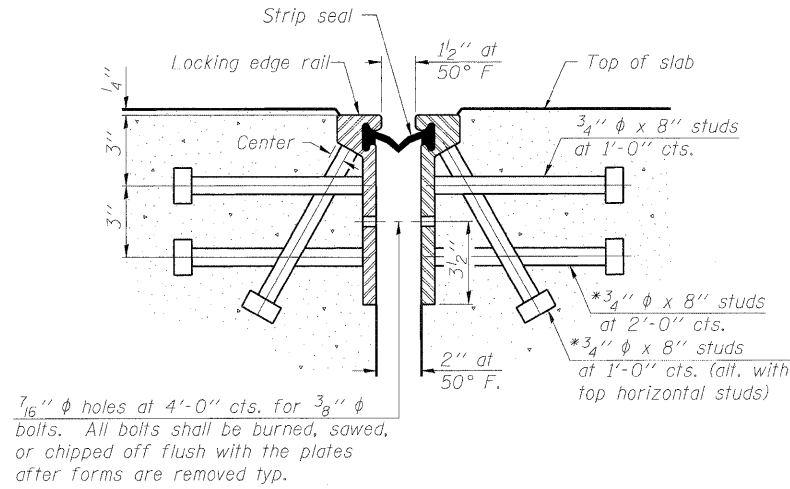
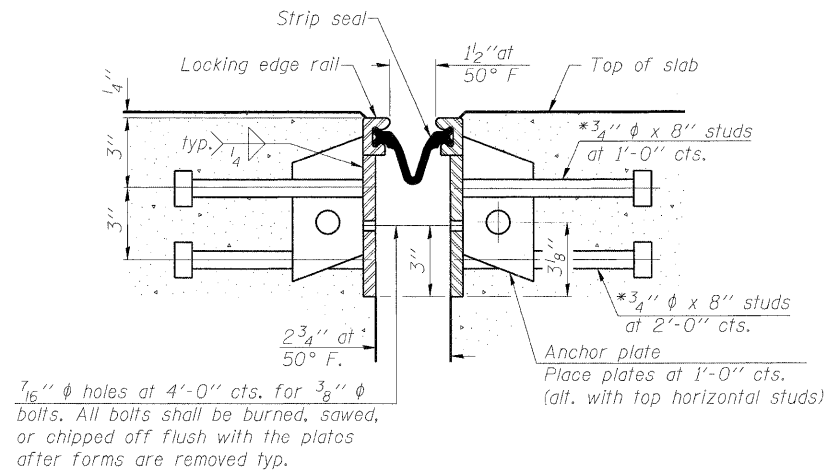


*Granular or solid flux filled headed studs conforming to Article 1006.32 of the Std. Specs., automatically end welded.



SECTION THRU ROLLED RAIL JOINT



SECTION THRU WELDED RAIL JOINT

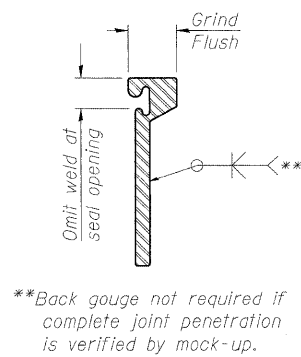
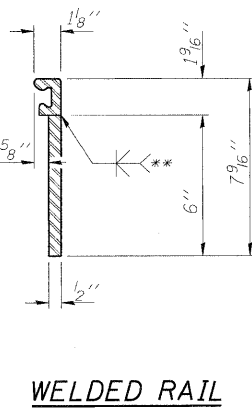
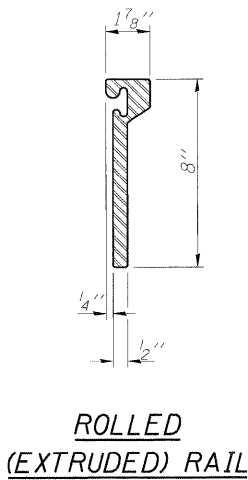
Notes:

The strip seal shall be made continuous and shall have a minimum thickness of 1/4". The configuration of the strip seal shall match the configuration of the Locking Edge Rails. Open or "webbed" strip seal gland configurations are not permitted. The gland shall be sized for a maximum rated movement of 4 inches.

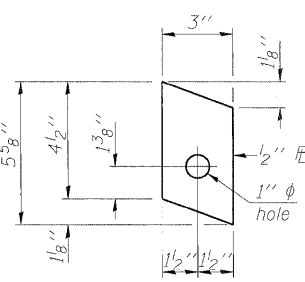
The height and thickness of the Locking Edge Rails shown are minimum dimensions. The actual configuration of the Locking Edge Rails and matching strip seal may vary from manufacturer to manufacturer. Flanged edge rails will not be allowed. Locking Edge Rails may be spliced at slope discontinuities and stage construction joints.

The manufacturer's recommended installation methods shall be followed. The joint opening and deck dimensions detailed on the superstructure are based on a rolled rail expansion joint. If the Contractor elects to use the welded rail expansion joint, the opening and deck dimensions shall be modified according to the dimensions detailed on this sheet. Required modifications shall be made at no additional cost to the State.

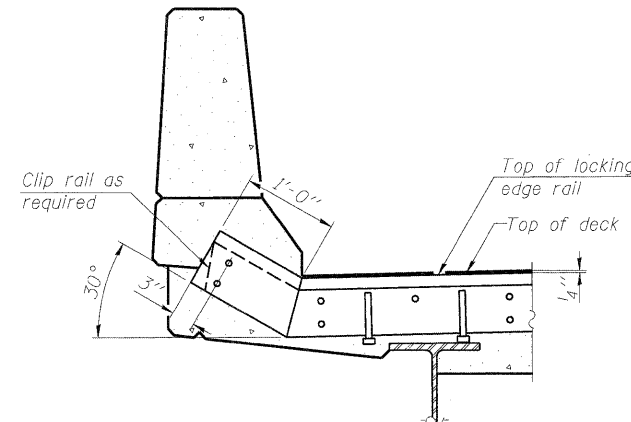
All steel components shall be galvanized after fabrication according to Article 520.03 of the Standard Specifications.



**Back gouge not required if complete joint penetration is verified by mock-up.

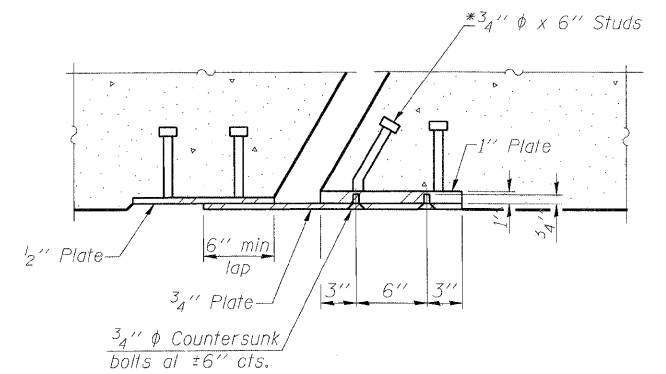


ANCHOR PLATE (for welded rail)



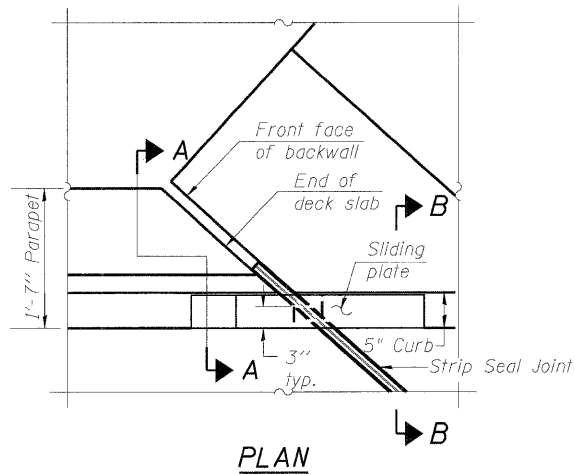
AT PARAPET

TYPICAL END TREATMENT



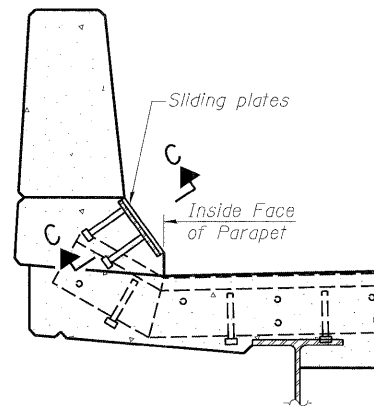
SECTION C-C

LOCKING EDGE RAILS

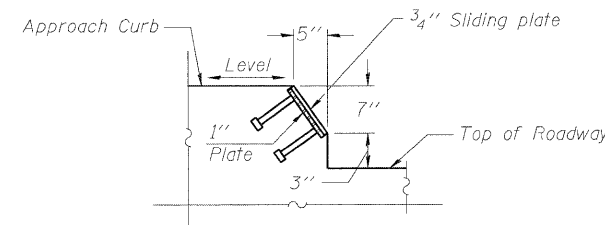


PLAN

NE corner shown, others similar.



SECTION A-A POINT BLOCK DETAILS



SECTION B-B

BILL OF MATERIAL

| Item | Unit | Quantity |
|----------------------------|------|----------|
| Preformed Joint Strip Seal | Foot | 88 |

FILE NAME = 0161093-SB08.dgn



PLOT DATE = 1/12/2009

| | |
|----------------|-----------|
| DESIGNED - LSD | REVISED - |
| DRAWN - JUN | REVISED - |
| CHECKED - TNS | REVISED - |
| DATE - 1/13/09 | REVISED - |

STATE OF ILLINOIS DEPARTMENT OF TRANSPORTATION

EXPANSION JOINT DETAILS

F.A.P. 392 FRANKLIN CONNECTOR (AT I-55 FRONTAGE ROAD B)
STRUCTURE NO. 016-1093

SCALE: NTS

SHEET NO. SB8 OF SB24 SHEETS

STA. 85+60.68

| F.A.P. RTE. | SECTION | COUNTY | TOTAL SHEETS | SHEET NO. |
|---|-------------|--------|--------------|-----------|
| 392 | 1717-2-3B-R | COOK | 114 | 86 |
| CONTRACT NO. 62197 | | | | |
| FED. ROAD DIST. NO. 7 ILLINOIS FED. AID PROJECT | | | | |