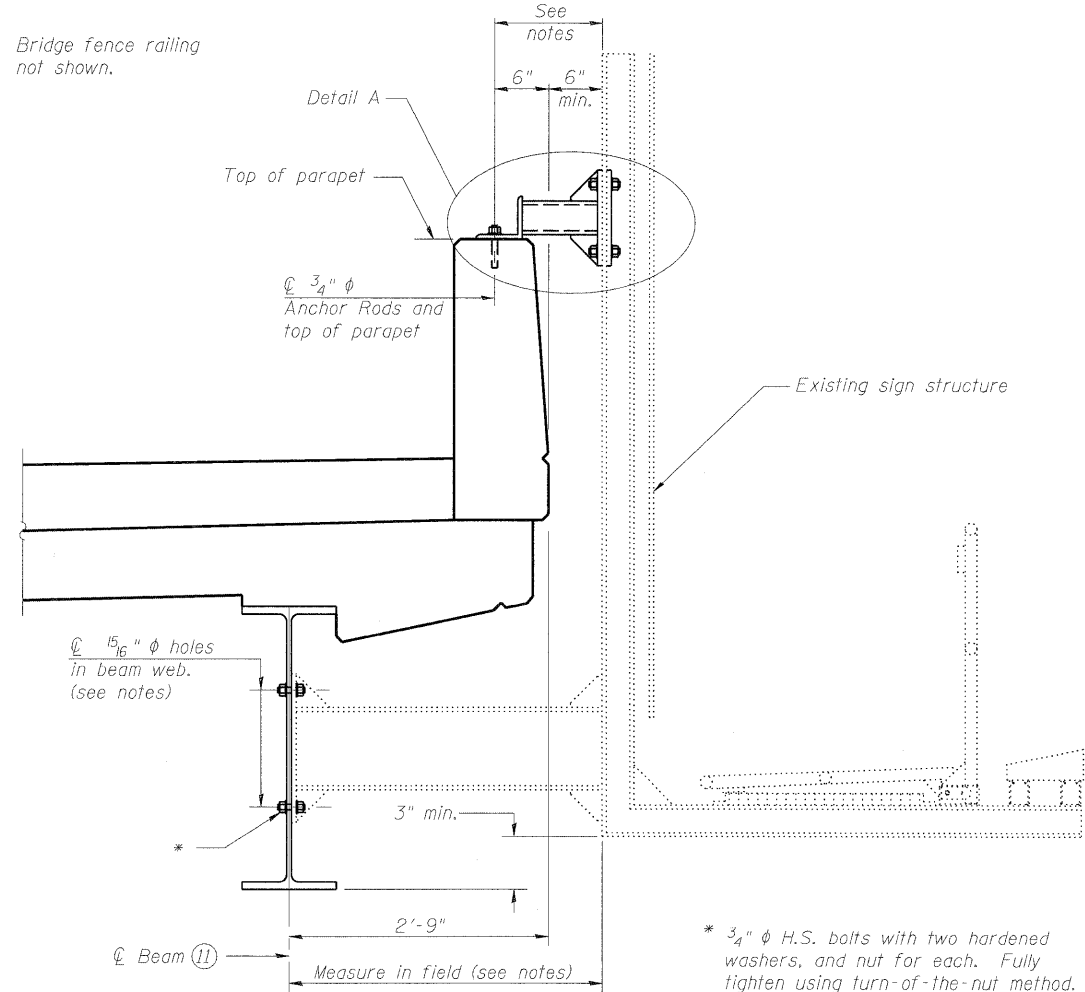
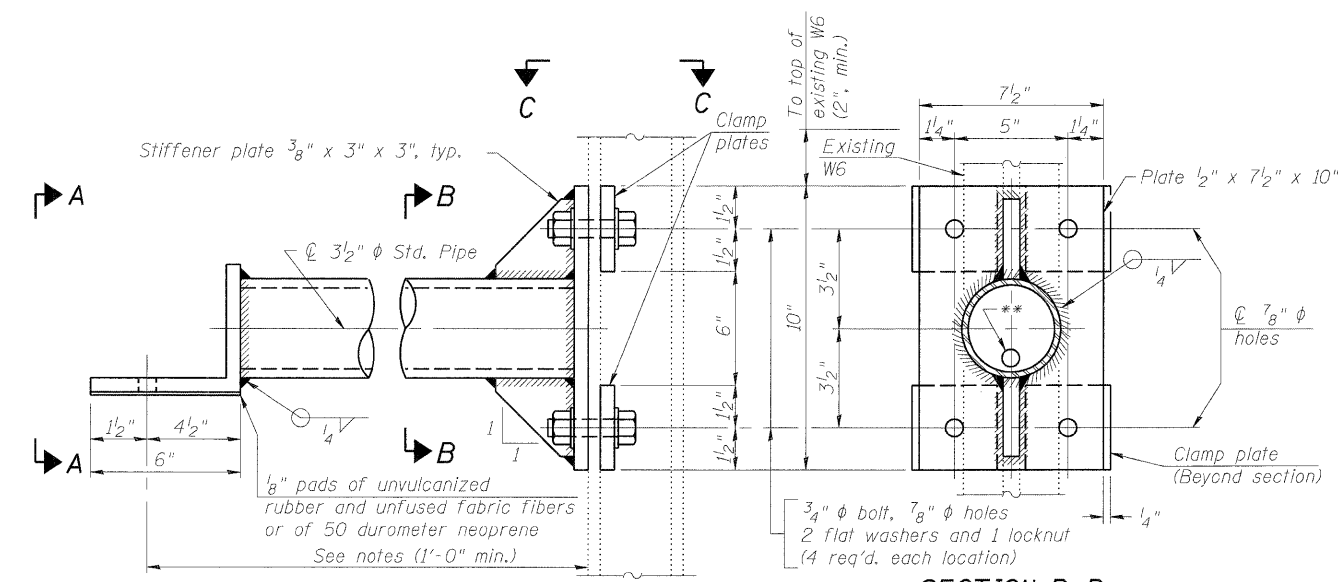


Bridge fence railing not shown.



PART SECTION

* $3/4"$ ϕ H.S. bolts with two hardened washers, and nut for each. Fully tighten using turn-of-the-nut method.

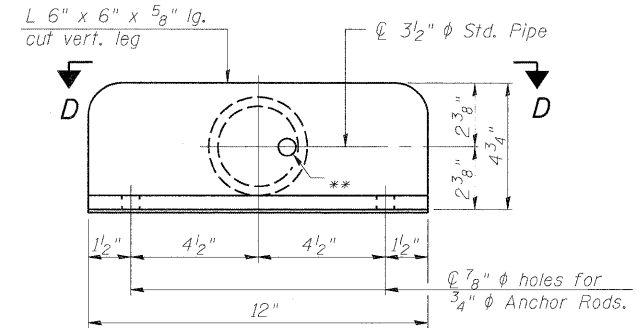


DETAIL A
(Upper bracket assembly - 7 req'd.)

SECTION B-B

BILL OF MATERIAL

Item	Unit	Total
Remove, Store, and Re-erect Overhead Sign Structure-Bridge Mounted	Each	1



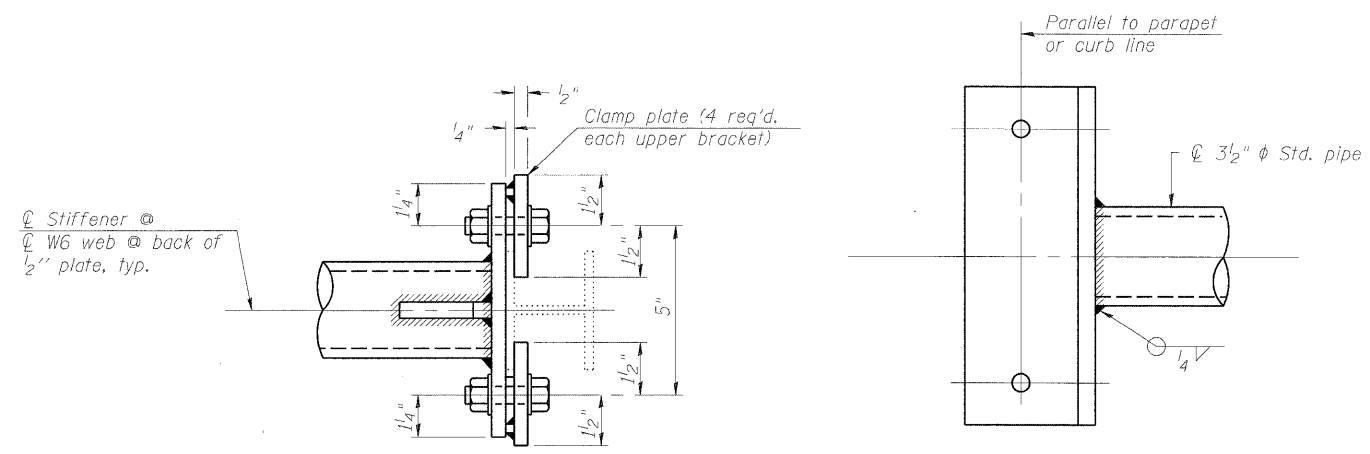
VIEW A-A

** $13/16"$ ϕ holes for galvanizing. After galvanizing, install $7/8"$ ϕ A307 hot-dip galvanized bolt to close hole in angle. (No bolt required in $1/2"$ plate.)

NOTES:

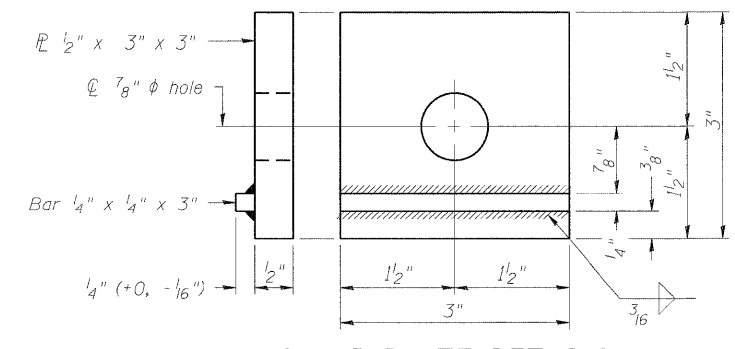
- Holes in beam may be drilled in the fabrication shop or in the field.
- Contractor shall field check all pertinent existing dimensions before submitting shop drawings.
- All holes in bridge beams or girders should be located in the middle half of the member. There shall be no holes drilled in the lower quarter of the member's depth. Proposed exceptions must be approved by the Engineer.
- Contractor must install upper brackets prior to fence installation.
- Contractor shall determine length of upper brackets based on field measurement of existing lower brackets and bridge dimensions.
- All welds to be continuous unless otherwise shown. All welding to be done in accordance with current AWS D1.1 Structural Welding Code (Steel) and the Standard Specifications.
- All Structural Steel Pipe shall be ASTM A53 Grade B with a minimum yield of 35,000 p.s.i., or A500 Grade B or C with a minimum yield of 46,000 p.s.i. If A500 pipe is substituted for A53, then the outside diameter shall be as detailed and wall thickness greater than or equal to A53.
- All Structural Steel Plates and Shapes shall conform to AASHTO M270 Gr. 36, Gr. 50 (M183, M223 Gr. 50).
- All bolts, washers, nuts and locknuts shall satisfy the requirements of ASTM designation A307 unless noted as "H.S." which shall require AASHTO M164 (A325), ASTM A449, or approved alternate. All fasteners shall be hot dip galvanized per AASHTO M232 unless otherwise specified.
- All Steel Plates, Shapes and Pipe shall be Hot Dip Galvanized after fabrication in accordance with AASHTO M111. Painting is not permitted.
- Anchor rods shall be all-threaded rod conforming to ASTM A307, $3/4"$ ϕ x 12" long, each with one plate washer and locknut and be hot dip galvanized per AASHTO M232. They shall be either cast into the concrete or epoxy grouted in accordance with Section 584 of the Standard Specifications. Minimum embedment in concrete shall be 9".

This work will be paid for at the unit cost per Each for REMOVE, STORE, and RE-ERECT OVERHEAD SIGN STRUCTURE - BRIDGE MOUNTED.



SECTION C-C

SECTION D-D
Connection detail for $3/2"$ ϕ pipe to parapet.



CLAMP PLATE DETAILS

FILE NAME = 0161064-SA31-BMS.dgn JACOBS	DESIGNED - MBO	REVISD -	STATE OF ILLINOIS DEPARTMENT OF TRANSPORTATION	BRIDGE MOUNTED SIGN CONNECTION F.A.P. 392 FRANKLIN CONNECTOR (AT 26th STREET) STRUCTURE NO. 016-1064	F.A.P. RTE. 392	SECTION 1717-2-3B-R	COUNTY COOK	TOTAL SHEETS 114	SHEET NO. 78
	DRAWN - JRW	REVISD -			CONTRACT NO. 62197				
CHECKED - MBO	REVISD -	SCALE: NTS	SHEET NO. SA31 OF SA31 SHEETS	STA. 11+81.01	FED. ROAD DIST. NO. 7 ILLINOIS FED. AID PROJECT				
DATE - 1/13/09	REVISD -								