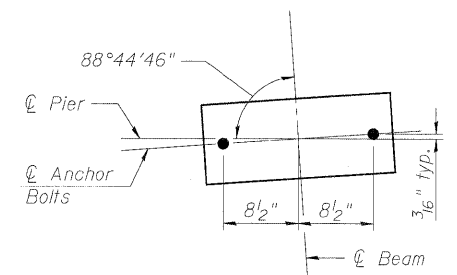


TOP PLAN PIER 1



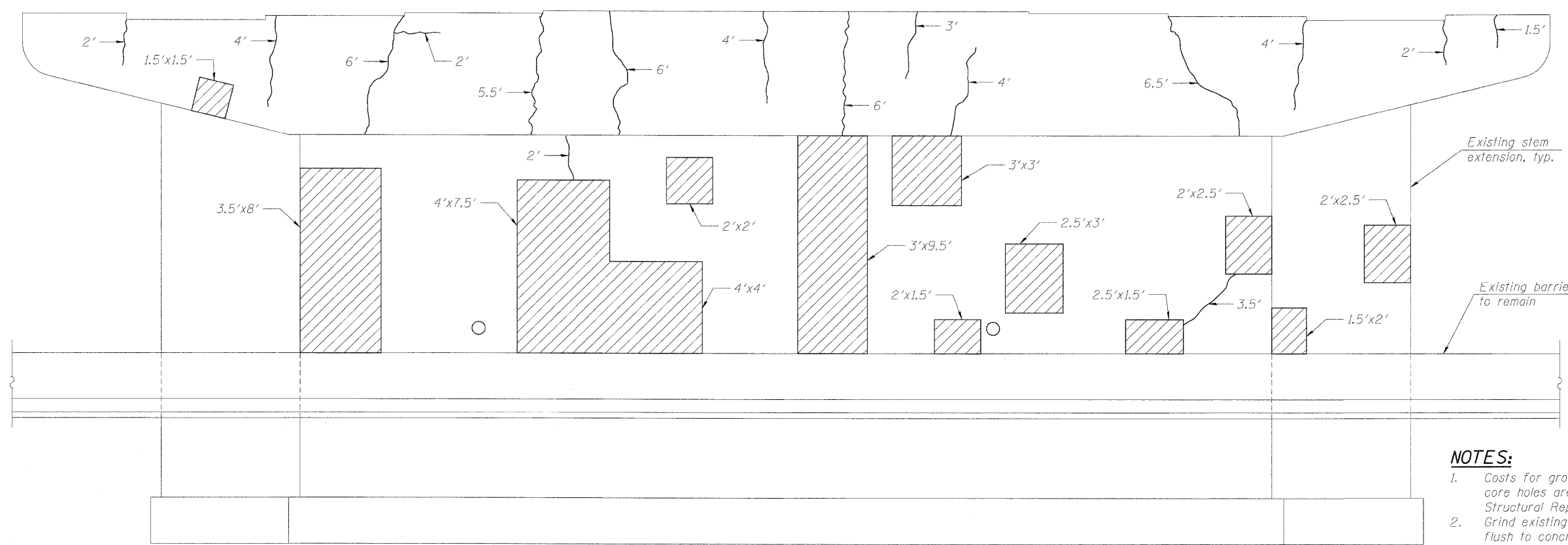
DETAIL A

BILL OF MATERIAL

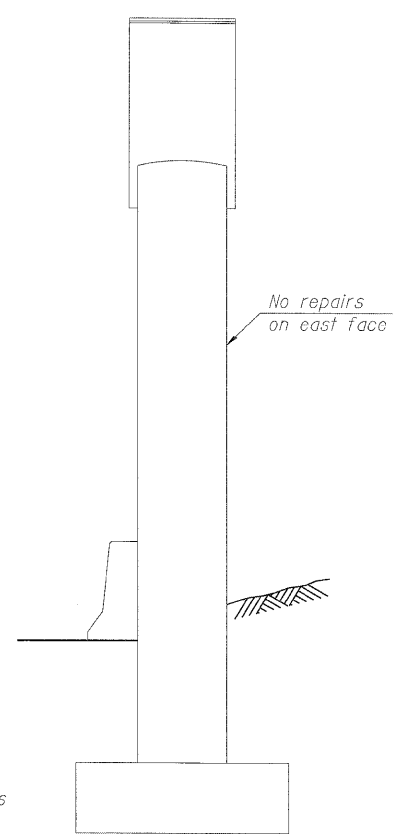
Item	Unit	Total
Structural Repair of Concrete (Depth Equal to or Less Than 5 Inches)	Sq. Ft.	145
Epoxy Crack Injection	Foot	62
Concrete Sealer	Sq. Ft.	1050

LEGEND:

- 1'x2' Structural Repair of Concrete (Depth Equal to or Less than 5 Inches) (W'xH')
- 2' Epoxy crack injection
- Existing core hole to be grouted solid



ELEVATION PIER 1 WEST FACE
(Looking east)



END VIEW PIER 1
(Looking north)

- NOTES:**
- Costs for grouting of existing core holes are incidental to Structural Repair of Concrete.
 - Grind existing pier anchor bolts flush to concrete.