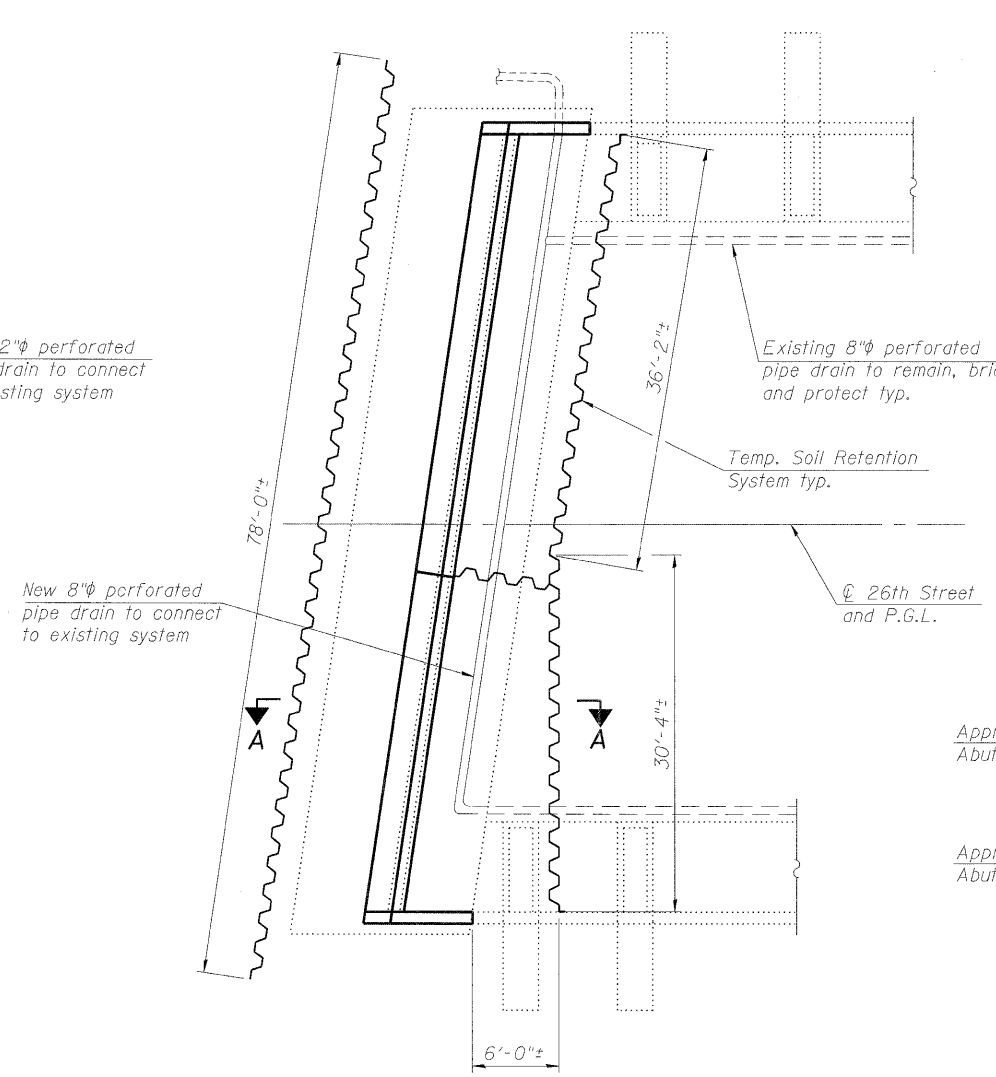
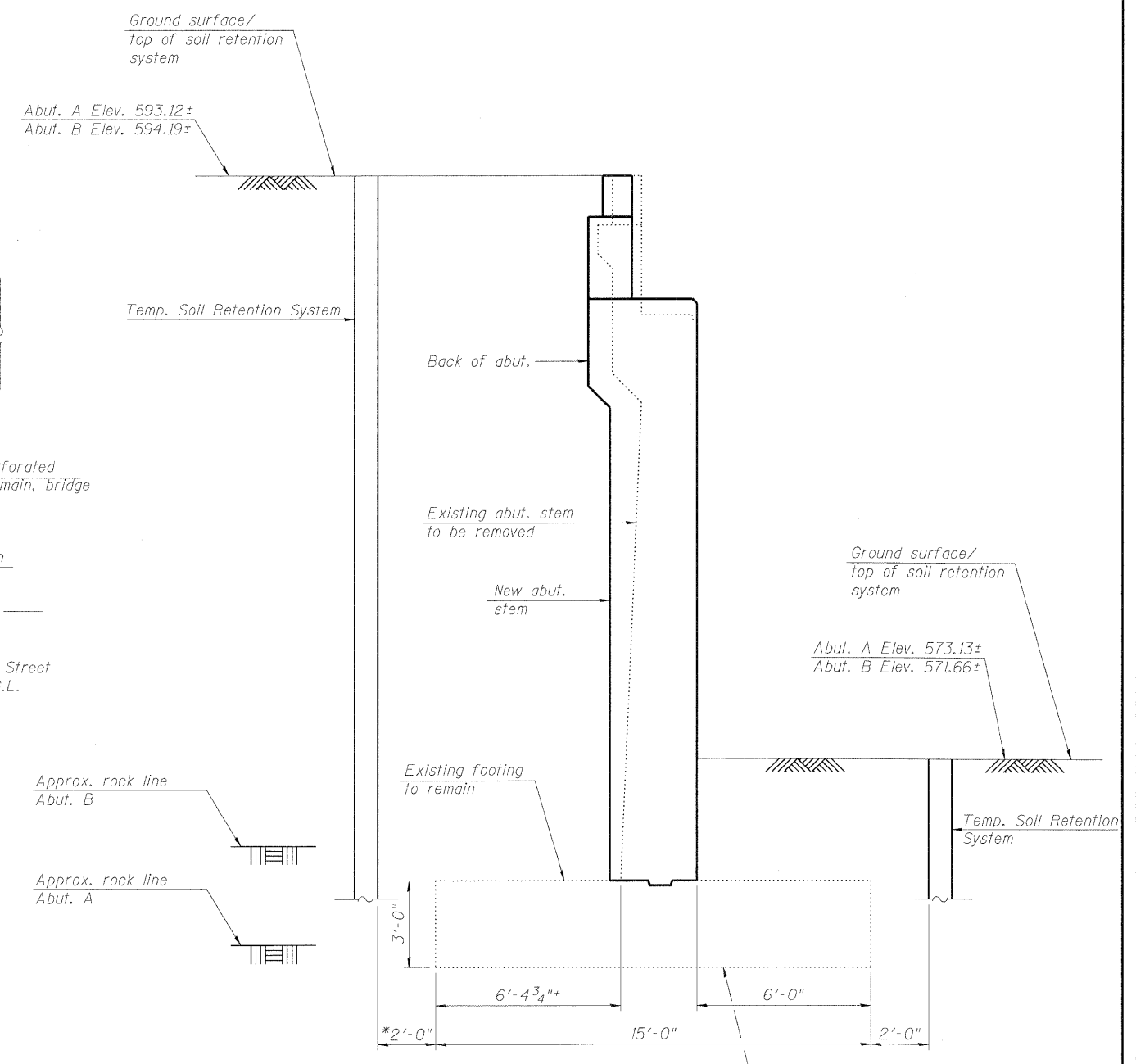


**PLAN ABUTMENT A**



**PLAN ABUTMENT B**



**SECTION A-A**

**NOTES:**

1. A cantilevered sheet piling design does not appear feasible and additional members or other retention systems may be necessary. The Contractor shall submit a temporary soil retention system design including plan details and calculations for review and acceptance by the Engineer.
2. The contractor shall connect the temporary soil retention system to the existing retaining or abutment walls to ensure stability of system members. This connection shall be reviewed and accepted by the Engineer and included in the cost for Temporary Soil Retention System.
3. For existing drainage and utilities, see drawing DU-01.
4. For existing traffic signals, see roadway drawing SJG-01.
5. For abutment stage removal line location, see sheets SA20 and SA23.

Existing 8'x8' Sewer (Exact location unknown), Abutment A only.



FILE NAME = 0161064-5A26-TSR.dgn	DESIGNED - JRW	REVISED -
	DRAWN - JRW	REVISED -
	CHECKED - MBQ	REVISED -
PLOT DATE = 1/12/2009	DATE - 1/13/09	REVISED -

**STATE OF ILLINOIS  
DEPARTMENT OF TRANSPORTATION**

<b>TEMPORARY SOIL RETENTION</b>		
F.A.P. 392 FRANKLIN CONNECTOR (AT 26th STREET) STRUCTURE NO. 016-1064		
SCALE: NTS	SHEET NO. SA26 OF SA31 SHEETS	STA. 11+81.01

F.A.P. RTE. 392	SECTION 1717-2-3B-R	COUNTY COOK	TOTAL SHEETS 114	SHEET NO. 73
CONTRACT NO. 62197				
FED. ROAD DIST. NO. 7 ILLINOIS FED. AID PROJECT				