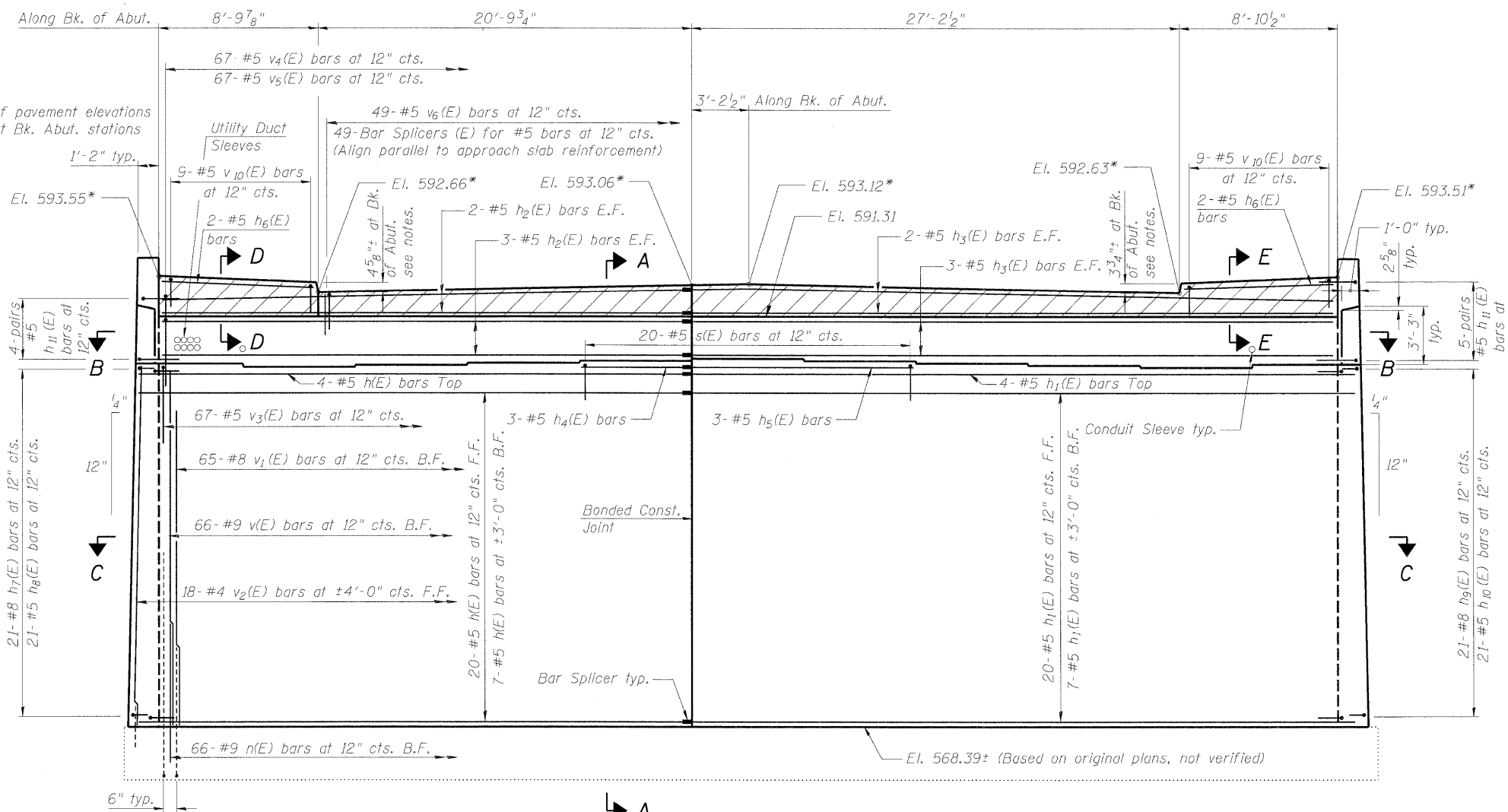
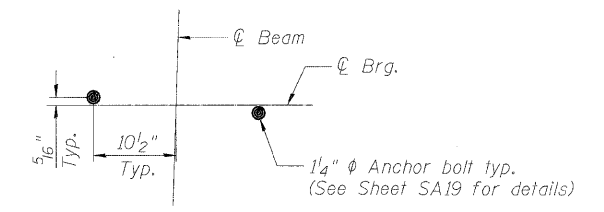


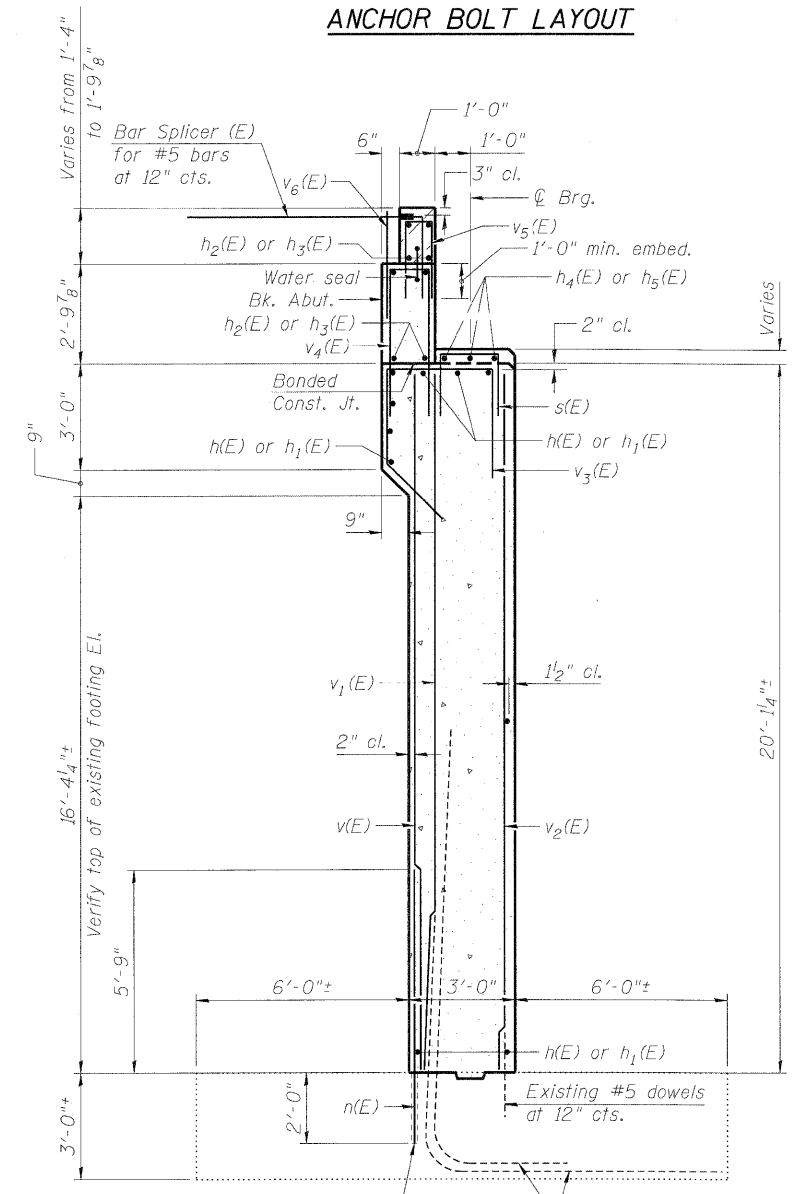
PLAN



ELEVATION



ANCHOR BOLT LAYOUT



SECTION A-A

NOTES:

- Hatched area to be poured after superstructure false work has been removed. Quantity of concrete included with Concrete Superstructure.
- Space reinforcement in cap to miss anchor bolts.
- Pour steps monolithically with cap. For step diagram, see Sheet SA22.
- Water seal shall be 6" dumbbell type, nonmetallic.
- Curbs are depressed for ADA ramps, see Roadway plans.
- For Section B-B thru Section E-E, wingwall details and Bill of Material, see Sheet SA22.
- Sleeve cost is included with Concrete Structures, see electrical sheets for number and size.

FILE NAME = 0161064-SA21-ABUTA.dgn 	DESIGNED - MBC	REVISED -	STATE OF ILLINOIS DEPARTMENT OF TRANSPORTATION	ABUTMENT A F.A.P. 392 FRANKLIN CONNECTOR (AT 26th STREET) STRUCTURE NO. 016-1064	F.A.P. RTE. 392	SECTION 1717-2-3B-R	COUNTY COOK	TOTAL SHEETS 114	SHEET NO. 68
	DRAWN - MBO	REVISED -			SHEET NO. SA21 OF SA31 SHEETS	STA. 11+81.01	CONTRACT NO. 62197		FED. ROAD DIST. NO. 7 ILLINOIS FED. AID PROJECT
CHECKED - LJH	REVISED -	SCALE: NTS							
DATE - 1/13/09	REVISED -								