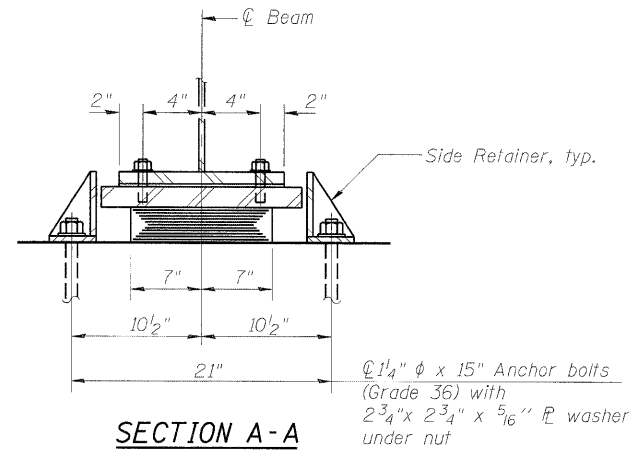
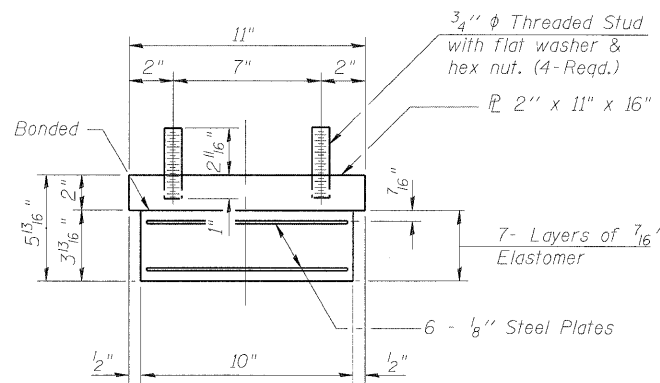


ELEVATION



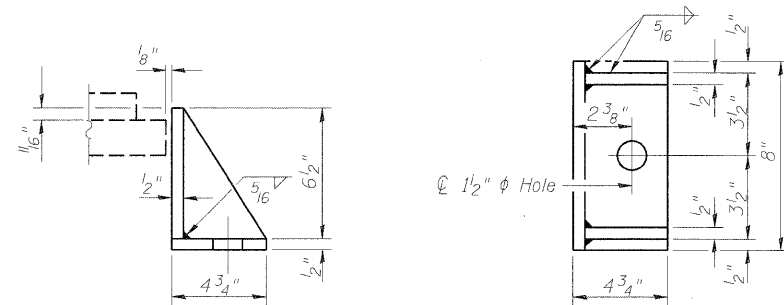
SECTION A-A

**TYPE I ELASTOMERIC EXP. BRG. AT ABUTMENTS**



BEARING ASSEMBLY

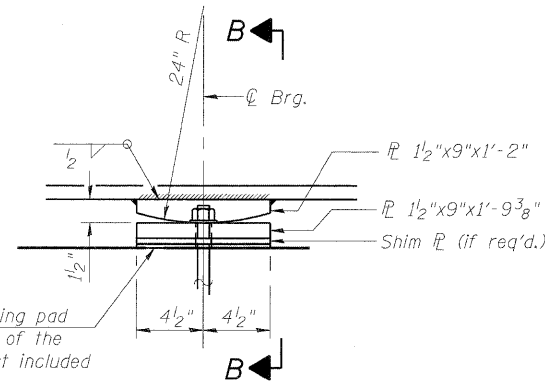
Note:  
Shim plates shall not be placed under Bearing Assembly.



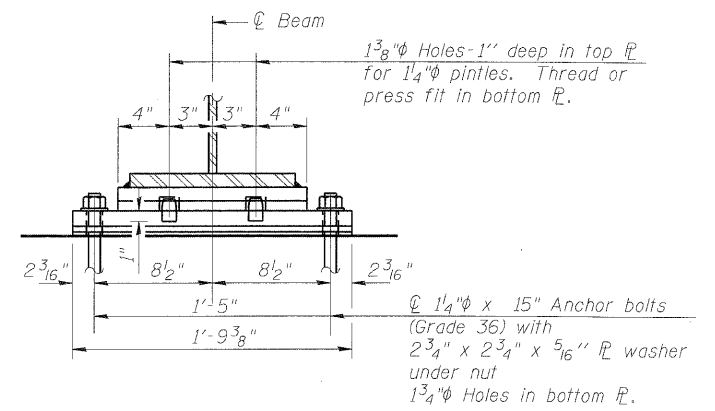
SIDE RETAINER

Equivalent rolled angle with stiffeners will be allowed in lieu of welded plates.

1/8" elastomeric neoprene leveling pad according to Article 1052.02 of the Standard Specifications. Cost included with Structural Steel.



ELEVATION



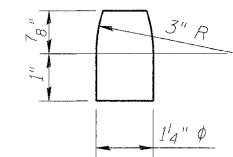
SECTION B-B

**FIXED BEARING AT PIERS**

(22 Req'd.)

**NOTES:**

- All structural steel for bearings shall be AASHTO M270 Grade 50 except as noted.
- Anchor bolts shall be ASTM F1554 all-thread (or an Engineer-approved alternate material) of the grade(s) and diameter(s) specified. ASTM A307 Grade C anchor bolts may be used in lieu of ASTM F1554 Grade 36 (Fy=36ksi). The corresponding specified grade of AASHTO M314 anchor bolts may be used in lieu of ASTM F1554.
- Anchor bolts at fixed bearings shall be installed in holes drilled after the supported member is in place.
- Anchor bolts for side retainers may be cast in place or installed in holes drilled before or after members are in place.
- Drilled and set anchor bolts shall be installed according to Article 521.06 of the Standard Specifications.
- Side retainers and other steel members required for the bearing assembly shall be included in the cost of Elastomeric Bearing Assembly, Type I.
- Two 1/8 inch adjusting shims shall be provided for each bearing in addition to all other plates or shims and placed as shown on bearing details.



PINTLE

(AASHTO M270, Grade 36)

**BILL OF MATERIAL**

Item	Unit	Total
Elastomeric Bearing Assembly Type I	Each	22
Anchor Bolts 1 1/4"	Each	88