

Bench Mark: Monument O, 23rd. & Canal, C.G. K135 1947 Elev. 593.72 (NAVD88)

Existing Structure: Structure No. 016-1064 was built in 1964 as the 26th Street Grade Separation, Section SW-1717.2-3B. The superstructure consists of two parallel, three span, continuous, composite, 36-inch deep wide flange beam systems separated by a longitudinal deck joint. The total deck thickness is 8" including a 2 1/2" latex modified overlay applied in 1990. The length back to back of abutments is 200'-2 1/4". The deck out to out dimension is 68'-0". The substructure consist of two closed abutments supported by spread footings on rock and two hammerhead piers also on spread footings on rock. Traffic will be maintained during rehabilitation using stage construction.

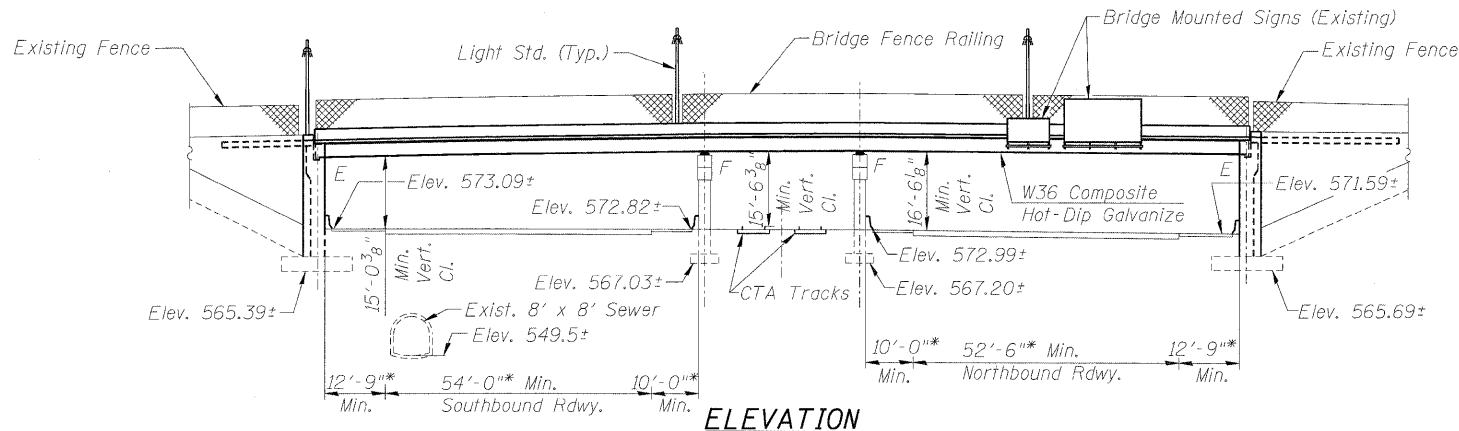
No Salvage.

STATION 11+81.01
RE-BUILT 2009 BY
STATE OF ILLINOIS
F.A.I. RT. 55
SEC. 1717-2-3B-R
LOADING HS20
STRUCTURE NO. 016-1064

NAME PLATE

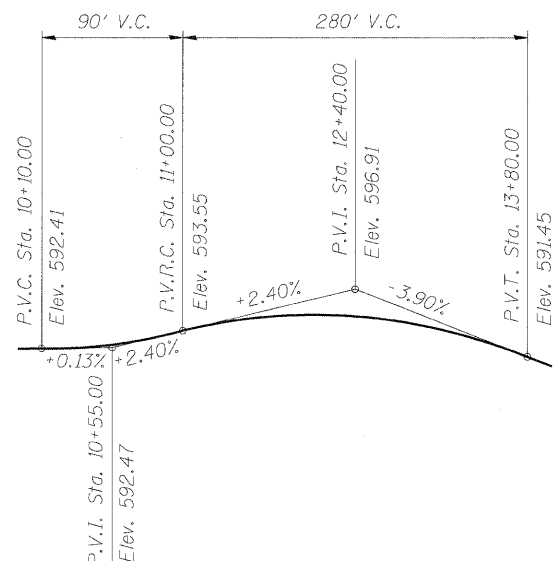
See Std. 515001

Note: Locate on Pier 2 as shown on Sheet SA28.



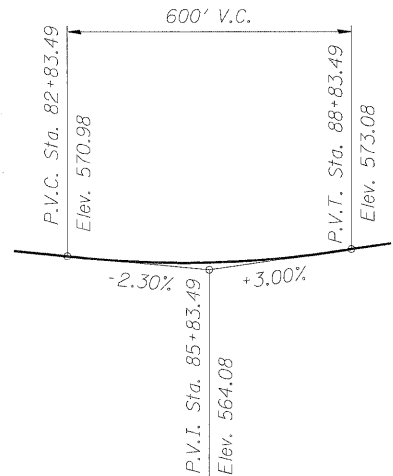
ELEVATION

* Dimensions at right angle to rdwy.



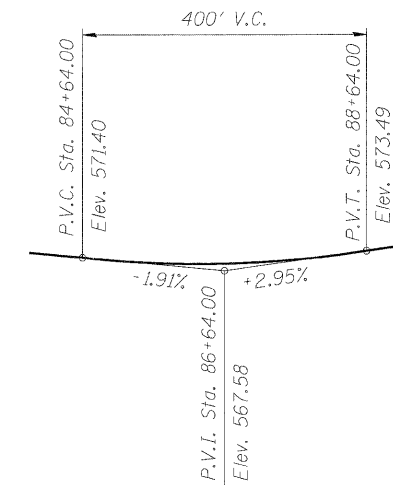
PROFILE GRADE

(At W. 26th Street)



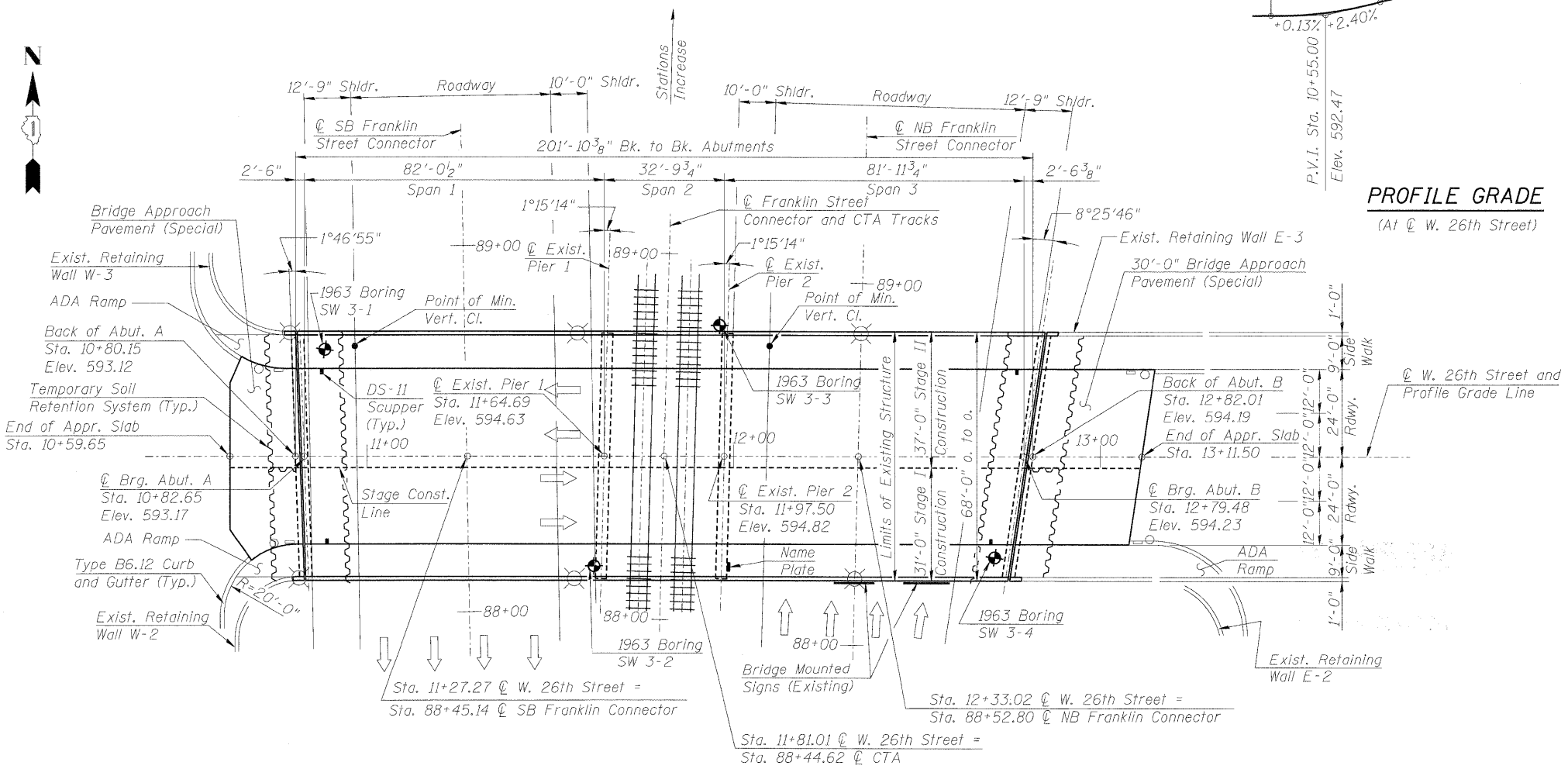
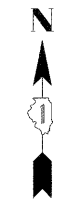
PROFILE GRADE

(At N.B. Franklin Connector)



PROFILE GRADE

(At S.B. Franklin Connector)



PLAN

DESIGN SPECIFICATIONS

2002 AASHTO, 17th Edition.

LOADING HS20-44

Allow 50 #/sq. ft. for future wearing surface.

SEISMIC DATA

Seismic Performance Category (SPC) = A
Bedrock Acceleration Coeff. (A) = 0.04g
Site Coefficient (S) = 1.0

DESIGN STRESSES

FIELD UNITS

New Construction:

f'c = 3,500 psi
fy = 60,000 psi (Reinforcement)
fy = 50,000 psi (M270 Grade 50) - Primary
fy = 36,000 psi (M270 Grade 36)

Existing Construction:

f'c = 3,500 psi
fy = 40,000 psi (Reinforcement)



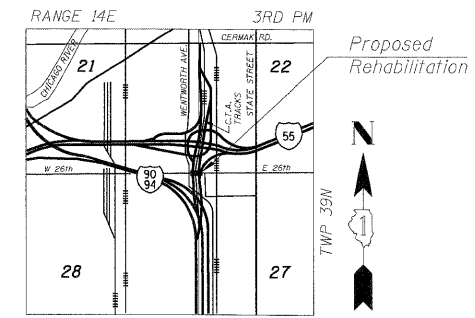
SIGNED: *Michael B. Quirin*
DATE: **1-13-09**
EXPIRES: **11-30-10**

NOTES:

- For existing utility information, see roadway drawings.
- For Bridge Approach Pavement details, see roadway drawings.

APPROVED
FOR STRUCTURAL ADEQUACY ONLY

Ralph E. Anderson (TSP)
ENGINEER OF BRIDGES AND STRUCTURES



LOCATION SKETCH



FILE NAME = 0161064-SA01-DPE.dgn	DESIGNED - JRW	REVISED -
	DRAWN - MJO	REVISED -
	CHECKED - MBQ	REVISED -
PLOT DATE = 1/12/2009	DATE = 1/13/09	REVISED -

STATE OF ILLINOIS
DEPARTMENT OF TRANSPORTATION

GENERAL PLAN AND ELEVATION
F.A.P. 392 FRANKLIN CONNECTOR (AT 26th STREET)
STRUCTURE NO. 016-1064

SCALE: NTS SHEET NO. SA1 OF SA31 SHEETS STA. 11+81.01

F.A.P. RTE.	SECTION	COUNTY	TOTAL SHEETS	SHEET NO.
392	1717-2-3B-R	COOK	114	48
CONTRACT NO. 62197				
FED. ROAD DIST. NO. 7 ILLINOIS FED. AID PROJECT				