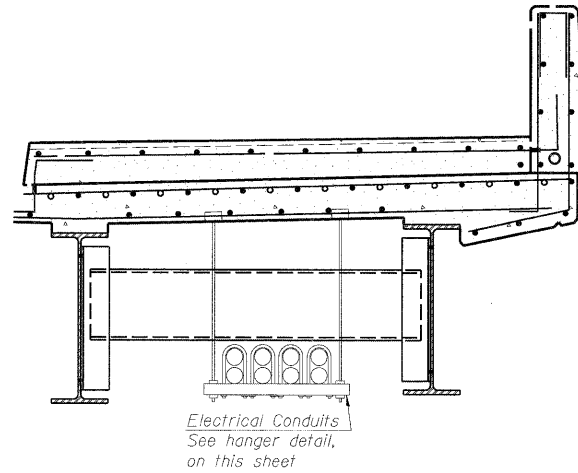
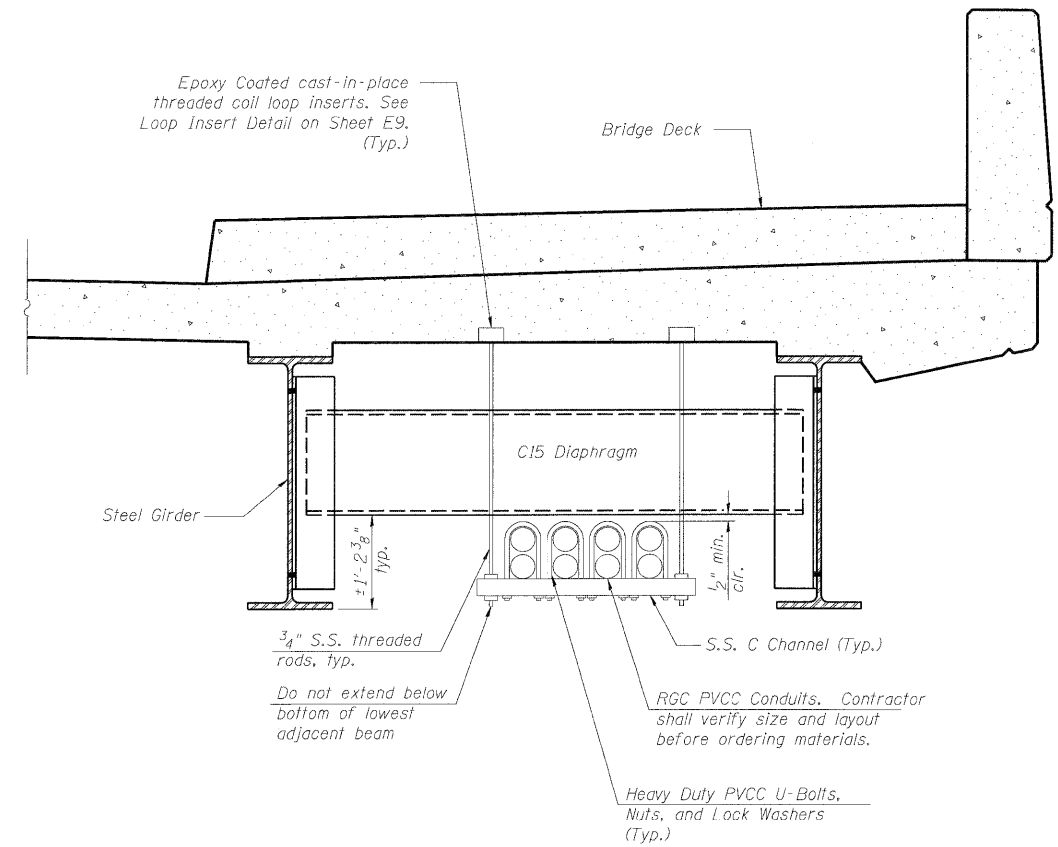


NORTH SIDE



SOUTH SIDE

CROSS SECTIONS
(Looking East)



ELECTRICAL CONDUITS HANGER DETAIL

Provide structural steel hanger assemblies with threaded rods, washers, nuts, and concrete inserts spaced as required by the manufacturer. All steel shapes, plates, components and hardware shall be stainless steel.

The electrical contractor must use approved single coil flared loop inserts when pendant mounting to a new bridge deck. The flared loop inserts must be cast into the concrete deck. The electrical contractor is responsible for locating and coordinating the insert locations with the bridge deck contractor.

FILE NAME = p:\2008\15000\Electrical\Cadd\E10_Misc_Details.dgn	DESIGNED - HS	REVISED -	STATE OF ILLINOIS DEPARTMENT OF TRANSPORTATION	F.A.P. 392 FRANKLIN CONNECTOR (AT 26th STREET AND AT I-55 FRONTAGE ROAD B)	F.A.P. RTE. 392	SECTION 1717.2-3B-R	COUNTY COOK	TOTAL SHEETS 114	SHEET NO. 47	
JACOBS	DRAWN - HS	REVISED -		E10 MISCELLANEOUS DETAILS	CONTRACT NO. 62197					
PLOT DATE = 1/12/2009	CHECKED - CDS	REVISED -		SCALE: N.T.S.	SHEET NO. OF SHEETS	STA. TO STA.	FED. ROAD DIST. NO. ILLINOIS FED. AID PROJECT			
	DATE - 01/13/09	REVISED -								