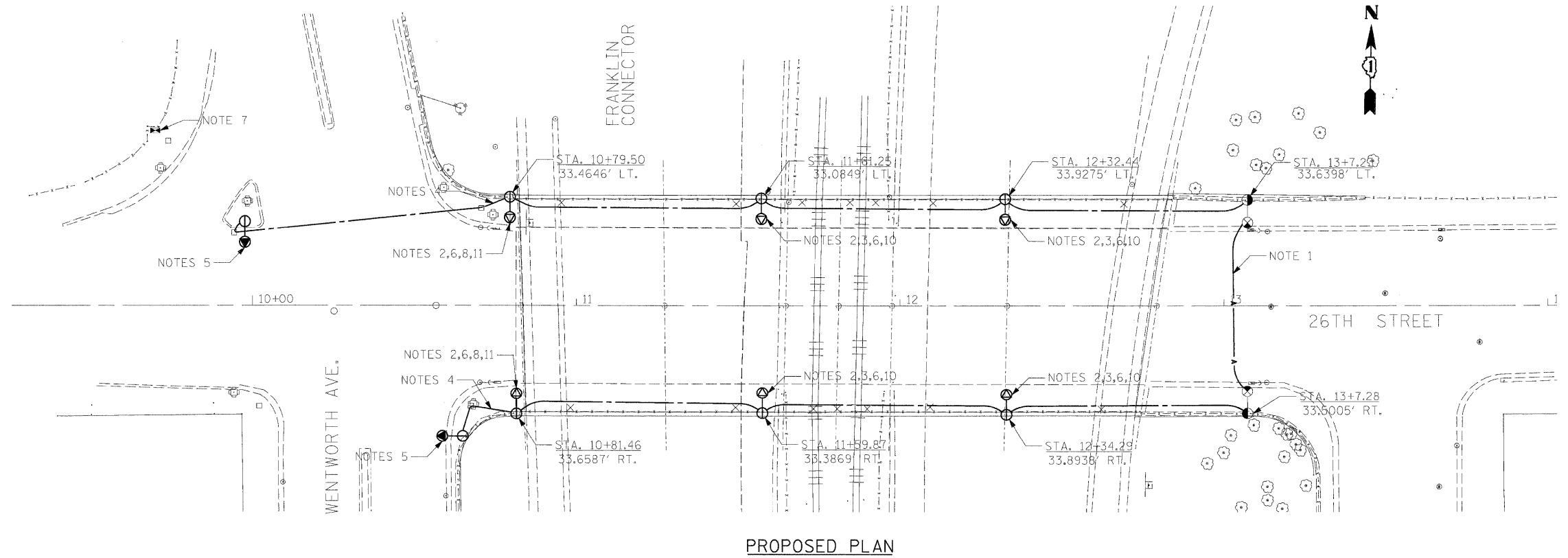


REMOVAL PLAN

- REMOVAL NOTES**
- 1- EXISTING H.P.S.V. LUMINAIRE AND MAST ARM TO REMAIN IN PLACE.
 - 2- REMOVE H.P.S.V. LUMINAIRE AND MAST. CLEAN AND STORE MAST FOR RE-INSTALLATION. RETURN LUMINAIRE TO OWNER.
 - 3- EXISTING POLE TO REMAIN IN PLACE.
 - 4- REMOVE POLE, CITY STEEL, ANCHOR BASE MOUNTED ON EXISTING PARAPET. CLEAN AND STORE FOR RE-INSTALLATION.
 - 5- EXISTING CABLE AND CONDUIT WHERE APPLICABLE TO BE REMOVED.
 - 6- INTERCEPT EXISTING CONDUIT AT THE FOUNDATION OF EXISTING LIGHTING UNIT TO REMAIN IN PLACE. REMOVE EXISTING CABLE AND CONDUIT BACK TO LAST EXISTING POLE TO REMAIN IN PLACE.
 - 7- EXISTING CITY LIGHTING CONTROLLER. FOR INFORMATION ONLY.
 - 8- EXISTING FEED SHOWN FOR INFORMATION ONLY.
 - 9- REMOVE EXISTING CONDUIT AND CABLE BACK TO PRIOR POLE.
 - 10- REMOVE H.P.S.V. LUMINAIRE AND MAST, CLEAN AND STORE FOR RE-INSTALLATION.
 - 11- EXISTING CONDUIT TO REMAIN. REMOVE EXISTING CABLE BACK TO PRIOR POLE.



PROPOSED PLAN

- PROPOSED NOTES**
- 1 - PROVIDE AERIAL CABLE FOR TEMPORARY CONNECTIONS. REMOVE AFTER FINAL CONNECTIONS MADE. CONTRACTOR SHALL COORDINATE WITH PHASING PLANS TO MAKE NECESSARY MODIFICATIONS TO KEEP REST OF THE STREET LIGHTS POWERED. SEE SHEET E9 FOR TEMPORARY POWER FEED TO EXISTING STEEL POLE DETAIL.
 - 2- RE-INSTALL EXISTING POLE STORED FROM REMOVAL.
 - 3- INSTALL EXISTING MAST STORED FROM REMOVAL. PROVIDE NEW 400W LUMINAIRE. RE-CONNECT TO EXISTING CONTROLLER AND CIRCUIT.
 - 4- PROVIDE NEW LIGHTING CONDUITS FROM EXISTING HANDHOLE TO NEW PROPOSED BRIDGE LIGHTING.
 - 5- EXISTING POLE SHOWN FOR INFORMATION ONLY.
 - 6- PAINT RE-INSTALLED LIGHTING POLES, MAST ARM, AND LUMINAIRE CHICAGO BLACK (6 TOTAL) TO MATCH EXISTING LIGHTING UNIT AT INTERSECTION.
 - 7- EXISTING LIGHTING CONTROLLER. FOR INFORMATION ONLY.
 - 8- INSTALL EXISTING MAST AND LUMINAIRE FROM REMOVAL. RE-CONNECT TO EXISTING CONTROLLER AND CIRCUIT.
 - 9- CONTRACTOR SHALL PROVIDE CABLES FROM POLE TO POLE WITH NO SPLICING.
 - 10- POLES SHALL BE PARAPET MOUNTED AND SHALL HAVE 11.5" BOLT CIRCLE AS SHOWN IN THE DETAILS U.N.O.
 - 11- POLES SHALL BE MOUNTED ON TOP OF RE-BUILT SECTION OF RETAINING WALL AND BOLT CIRCLE PATTERN SHALL BE ASCERTAINED TO MATCH EXISTING.
 - 12- ALL PROPOSED CONDUIT AND CABLE SHALL BE AS PER LEGEND SHEET E1.

FILE NAME = pt:\2008\c\15820\Electrical\Cadd\E4-26th Street Bridge Roadway Lighting Plan.dgn JACOBS PLOT DATE = 1/12/2009	DESIGNED - HS DRAWN - HS CHECKED - CDS DATE - 01/13/09	REVISED - REVISED - REVISED - REVISED -	STATE OF ILLINOIS DEPARTMENT OF TRANSPORTATION	F.A.P. 392 FRANKLIN CONNECTOR (AT 26th STREET AND AT I-55 FRONTAGE ROAD B) E4 26th STREET BRIDGE ROADWAY LIGHTING PLAN		F.A.P. RTE. 392 SECTION 1717.2-3B-R COUNTY COOK TOTAL SHEETS 114 SHEET NO. 41	CONTRACT NO. 62197 ILLINOIS FED. AID PROJECT
	SCALE: 1" = 20'-0" SHEET NO. OF SHEETS STA. TO STA.			STA. TO STA.			