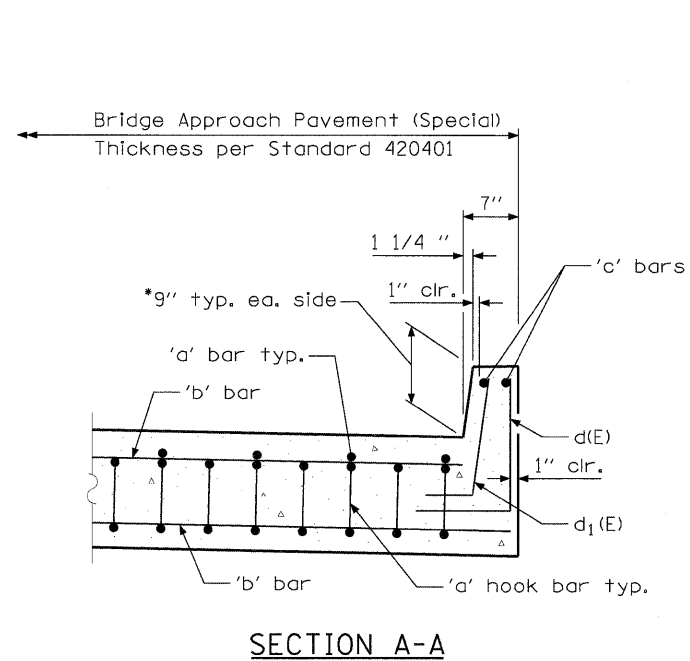


**FRONTAGE RD. B WEST APPROACH
SLAB BILL OF MATERIAL**

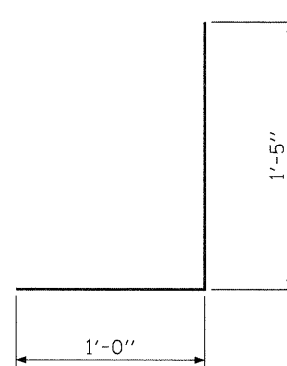
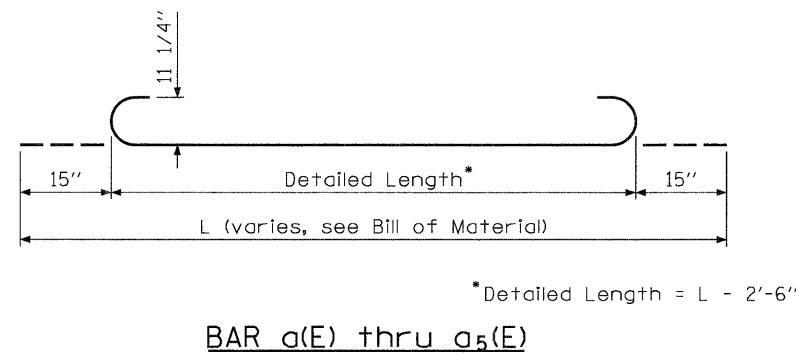
Bar	No.	Size	Length*	Shape
a(E)	12	#9	22'-8" to 32'-8"	U
a ₁ (E)	39	#9	23'-8" to 32'-6"	U
a ₂ (E)	5	#9	7'-6" to 21'-0"	U
a ₃ (E)	5	#9	28'-8" to 30'-1"	U
a ₄ (E)	47	#9	24'-0" to 32'-8"	U
a ₅ (E)	13	#9	3'-9" to 16'-4"	U
a ₆ (E)	6	#5	20'-2" to 29'-3"	—
a ₇ (E)	20	#5	21'-2" to 30'-0"	—
a ₈ (E)	1	#5	15'-2"	—
a ₉ (E)	1	#5	8'-5"	—
a ₁₀ (E)	3	#5	26'-2" to 27'-7"	—
a ₁₁ (E)	23	#5	21'-8" to 29'-11"	—
a ₁₂ (E)	7	#5	1'-3" to 13'-10"	—
b(E)	19	#5	26'-2" to 29'-0"	—
b ₁ (E)	11	#5	2'-8" to 28'-11"	—
b ₂ (E)	1	#5	12'-6"	—
b ₃ (E)	1	#5	24'-9"	—
b ₄ (E)	8	#5	3'-3" to 24'-2"	—
b ₅ (E)	22	#5	25'-7" to 33'-5"	—
b ₆ (E)	6	#4	26'-2" to 29'-0"	—
b ₇ (E)	4	#4	2'-8" to 28'-11"	—
b ₈ (E)	1	#4	12'-6"	—
b ₉ (E)	1	#4	24'-9"	—
b ₁₀ (E)	3	#4	3'-3" to 24'-2"	—
b ₁₁ (E)	7	#4	25'-7" to 33'-5"	—
c(E)	2	#4	18'-9"	—
c ₁ (E)	2	#4	19'-6"	—
c ₂ (E)	2	#4	5'-9"	U
c ₃ (E)	2	#4	23'-5"	—
d(E)	73	#5	2'-5"	L
d ₁ (E)	73	#5	1'-11"	L
Bridge Approach Pavement (Special)		Sq. Yd.		162

* Length varies as indicated

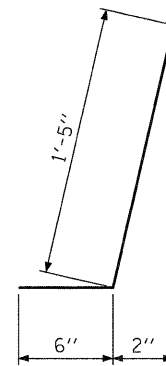
Note:
Reinforcement bars, including bars at curb, tie bars, preformed joint seal, subbase, improved subgrade, bond breaker, and concrete pad (including reinforcement) will be included with Bridge Approach Pavement (Special).



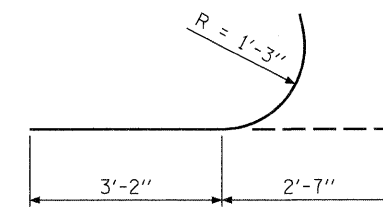
SECTION A-A
*Transition to 10" at bridge end of approach slab.



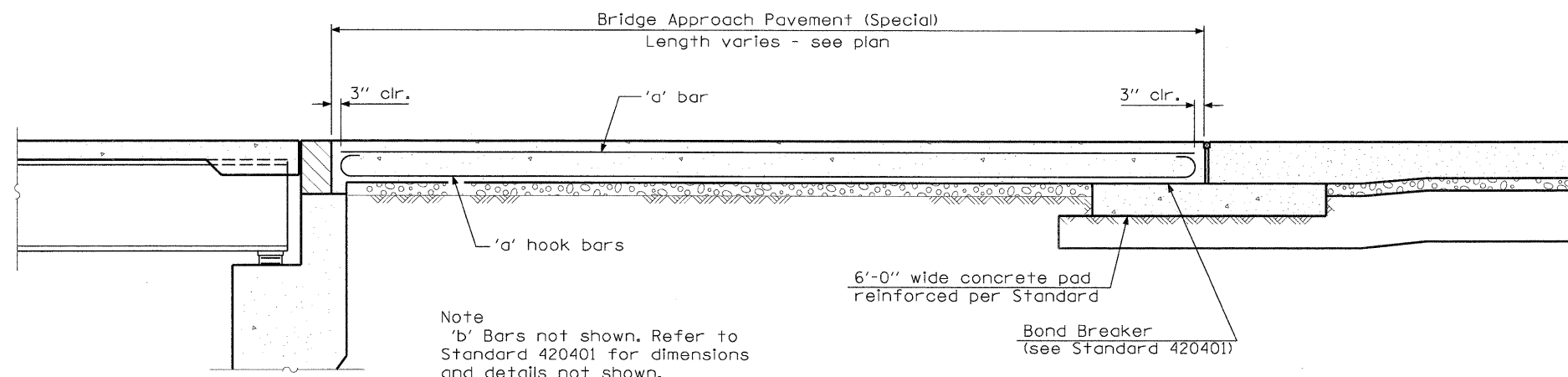
BAR d(E)



BAR d₁(E)



BAR c₂(E)



Note
'b' Bars not shown. Refer to Standard 420401 for dimensions and details not shown.

SECTION B-B