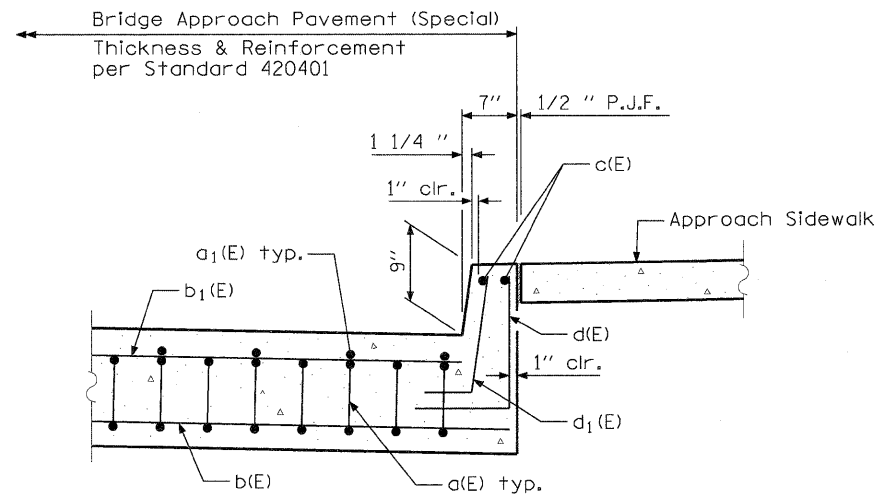
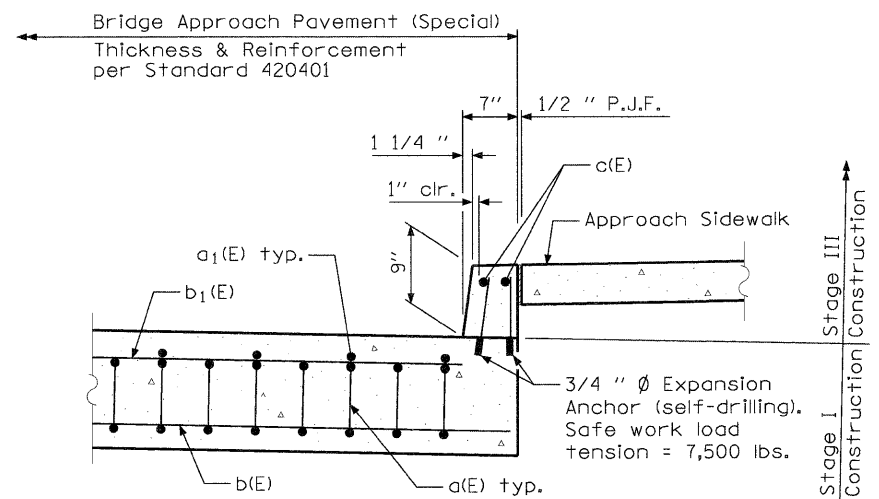


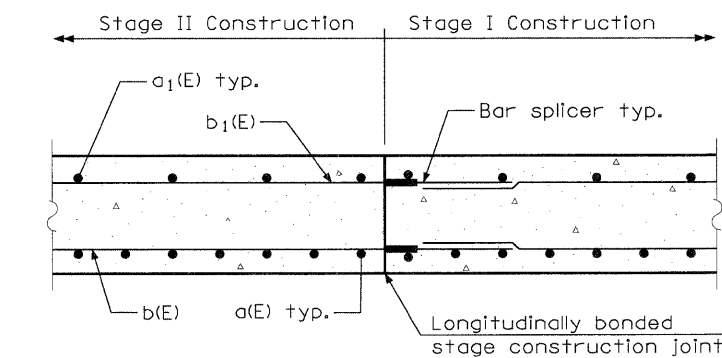
PLAN



SECTION A-A



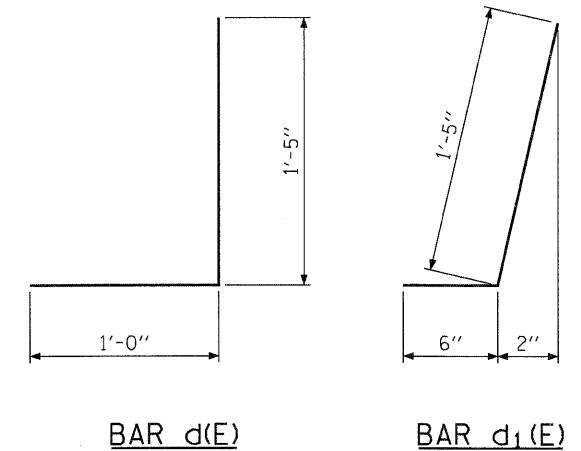
SECTION B-B



SECTION C-C

26TH ST. EAST APPROACH
SLAB BILL OF MATERIAL

Bar	No.	Size	Length	Shape
c(E)	4	#4	29'-6"	—
d(E)	31	#5	2'-5"	L
d1(E)	31	#5	1'-11"	L
Bridge Approach Pavement (Special)			Sq. Yd.	164



BAR d(E)

BAR d1(E)

Note:
Reinforcement bars, including bars at curb, tie bars, bar splicers, expansion anchors, preformed joint seal, subbase, improved subgrade, bond breaker, and concrete pad (including reinforcement) will be included with Bridge Approach Pavement (Special).
Bar splicer assemblies shall be of an approved type and shall develop in tension at least 125 percent of the yield strength of the lapped reinforcement bars.