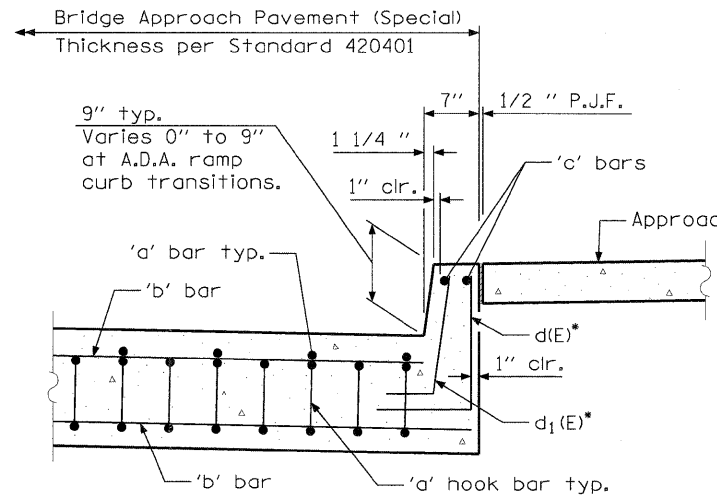
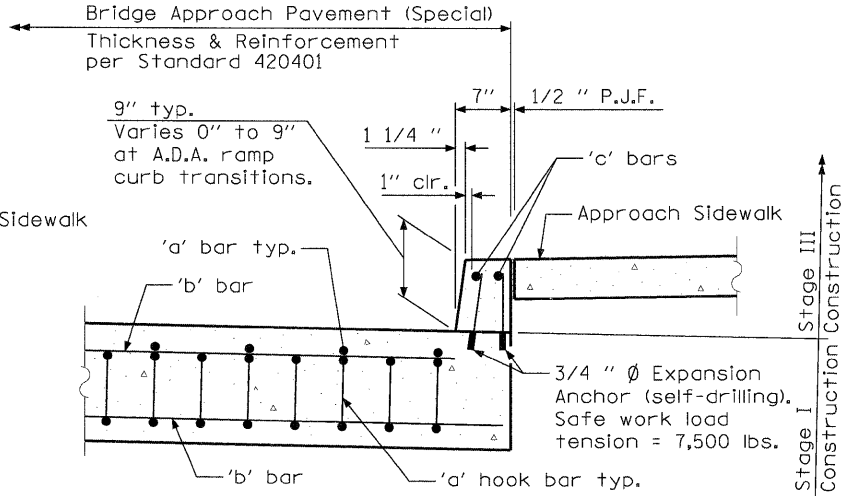


26TH ST. WEST APPROACH
SLAB BILL OF MATERIAL

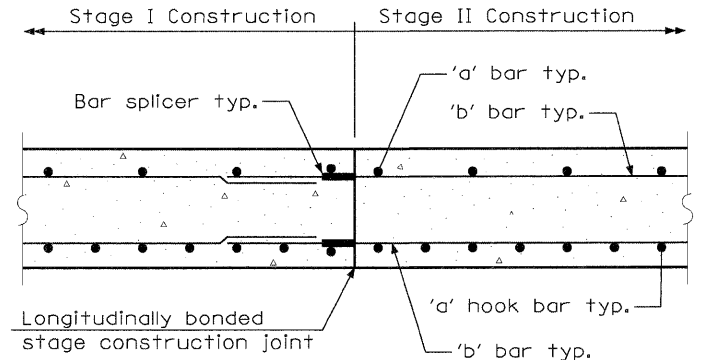


SECTION A-A

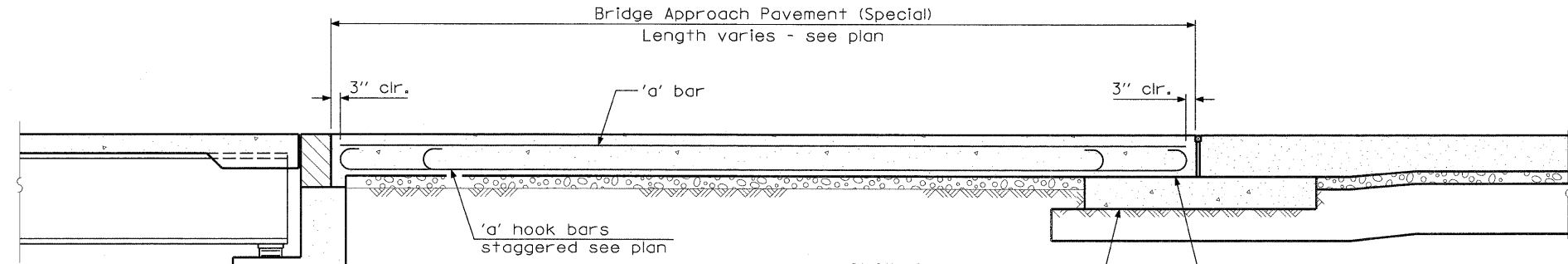


SECTION B-B

*Omit if curb height is less than 4". See Proposed A.D.A. Ramp Schedule.



SECTION C-C

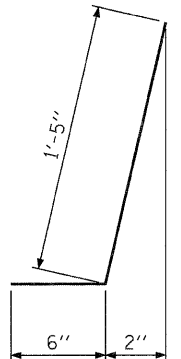


SECTION C-C

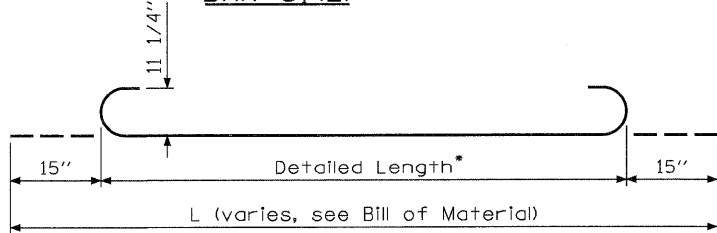
Note
'b' Bars not shown. Refer to Standard 420401 for dimensions and details not shown.

Note:
Reinforcement bars, including bars at curb, tie bars, bar splicers, expansion anchors, preformed joint seal, subbase, improved subgrade, bond breaker, and concrete pad (including reinforcement) will be included with Bridge Approach Pavement (Special).
Bar splicer assemblies shall be of an approved type and shall develop in tension at least 125 percent of the yield strength of the lapped reinforcement bars.

BAR d(E)

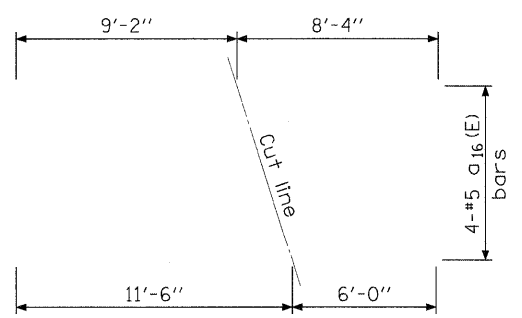


BAR d1(E)

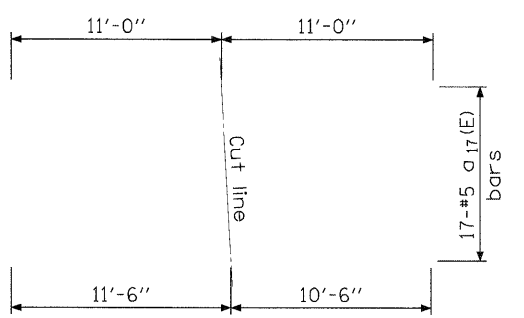


BAR a(E) thru a15(E)

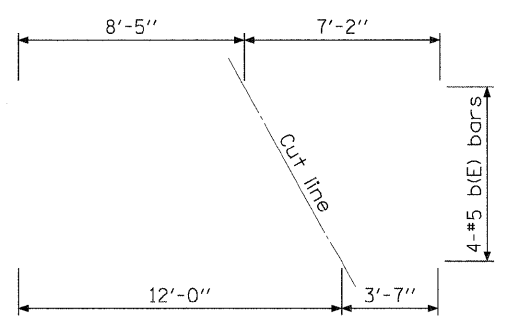
*Detailed Length = L - 2'-6"



BAR a16(E)
CUT DIAGRAM
(2) required



BAR a17(E)
CUT DIAGRAM
(1) required



BAR b(E)
CUT DIAGRAM
(2) required

Bar	No.	Size	Length	Shape
a(E)	2	#9	15'-1"	U
a1(E)	2	#9	16'-3"	U
a2(E)	2	#9	15'-10"	U
a3(E)	2	#9	17'-0"	U
a4(E)	2	#9	16'-8"	U
a5(E)	2	#9	17'-10"	U
a6(E)	2	#9	17'-6"	U
a7(E)	2	#9	18'-8"	U
a8(E)	2	#9	18'-3"	U
a9(E)	2	#9	19'-5"	U
a10(E)	2	#9	19'-1"	U
a11(E)	2	#9	20'-3"	U
a12(E)	2	#9	19'-11"	U
a13(E)	2	#9	21'-0"	U
a14(E)	29	#9	21'-4"	U
a15(E)	42	#9	20'-11"	U
a16(E)	8	#5	17'-6"	—
a17(E)	17	#5	22'-0"	—
a18(E)	50	#5	12'-0"	—
a19(E)	18	#5	6'-0"	—
b(E)	8	#5	15'-7"	—
b1(E)	15	#5	13'-0"	—
b2(E)	23	#5	12'-9"	—
b3(E)	22	#5	19'-9"	—
b4(E)	14	#5	11'-8"	—
b5(E)	1	#4	14'-2"	—
b6(E)	1	#4	19'-0"	—
b7(E)	1	#4	23'-8"	—
b8(E)	1	#4	22'-0"	—
b9(E)	1	#4	21'-7"	—
b10(E)	1	#4	21'-3"	—
b11(E)	1	#4	21'-1"	—
b12(E)	1	#4	20'-10"	—
b13(E)	1	#4	25'-7"	—
b14(E)	1	#4	29'-3"	—
b15(E)	1	#4	28'-5"	—
b16(E)	1	#4	27'-11"	—
b17(E)	1	#4	27'-6"	—
b18(E)	1	#4	27'-5"	—
c(E)	2	#4	14'-2"	—
c1(E)	2	#4	13'-7"	—
d(E)	30	#5	2'-5"	L
d1(E)	30	#5	1'-11"	L

Bridge Approach Pavement (Special) Sq. Yd. 115