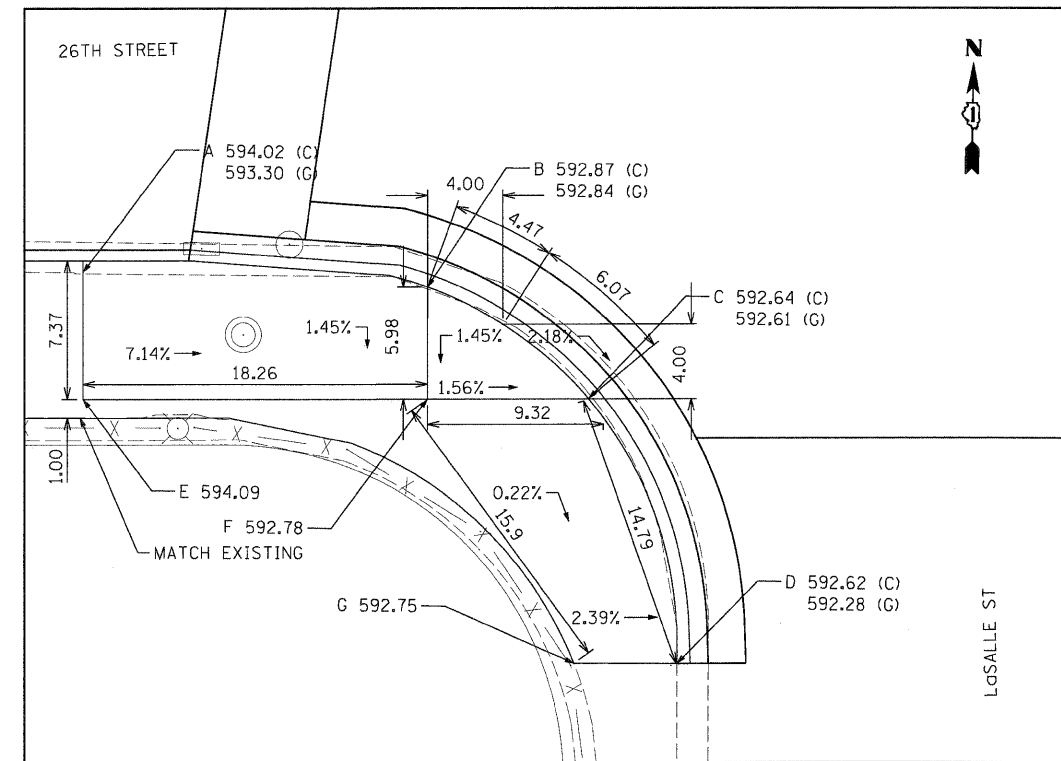
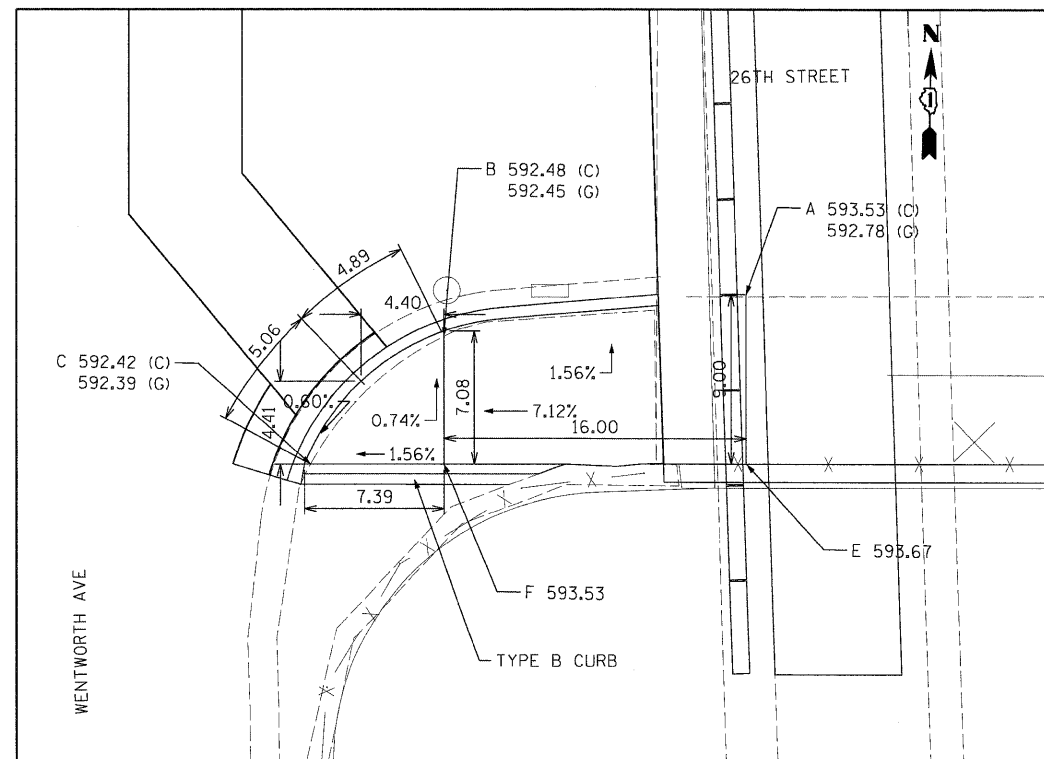


26th STREET & WENTWORTH AVE
NE CORNER



26th STREET & LaSALLE ST
SW CORNER

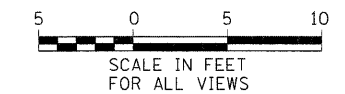


26th STREET & WENTWORTH AVE
SE CORNER

SE CORNER 26TH STREET & WENTWORTH		
POINT	STATION	OFFSET
A	10+86.05	24.00
B	10+70.05	25.94
C	10+62.66	33.02
D	N/A	N/A
E	10+86.05	33.03
F	10+70.05	33.02
G	N/A	N/A

NE CORNER 26TH STREET & WENTWORTH		
POINT	STATION	OFFSET
A	10+85.53	24.00
B	10+66.53	26.78
C	10+58.54	32.94
D	N/A	N/A
E	10+85.53	33.00
F	10+66.53	32.94
G	N/A	N/A

SW CORNER 26TH STREET & LaSALLE		
POINT	STATION	OFFSET
A	13+02.26	24.58
B	13+20.52	25.98
C	13+29.05	31.96
D	13+33.00	46.00
E	13+02.27	31.96
F	13+20.52	31.96
G	13+28.27	45.98



DET-03

FILE NAME =	DESIGNED - KEB	REVISED -
pt:\2008\c\15980\Cadd\Sheet\ADA Ramp Schedule.dgn	DRAWN - KEB	REVISED -
	CHECKED - PJM	REVISED -
	DATE - 01/13/09	REVISED -

DESIGNED - KEB	REVISED -
DRAWN - KEB	REVISED -
CHECKED - PJM	REVISED -
DATE - 01/13/09	REVISED -

STATE OF ILLINOIS
DEPARTMENT OF TRANSPORTATION

F.A.P. 392 FRANKLIN CONNECTOR (AT 26th STREET AND AT I-55 FRONTAGE ROAD B)		F.A.P. RTE.	SECTION	COUNTY	TOTAL SHEETS	SHEET NO.
PROPOSED ADA RAMP SCHEDULE - 26th STREET		392	1717.2-3B-R	COOK	114	29
SCALE: 1" = 5'	SHEET NO. 28 OF 114 SHEETS	STA.	TO STA.	CONTRACT NO. 62197		
		FED. ROAD DIST. NO. ILLINOIS FED. AID PROJECT				

