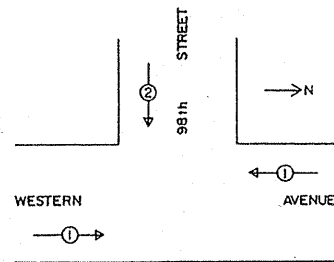


RESURFACING - TRAFFIC SIGNAL SCHEDULE OF QUANTITIES

The "Pay Items" below are paid separately as per the attached "Specification" for MAGNETIC DETECTOR REMOVAL AND DETECTOR LOOP INSTALLATION.

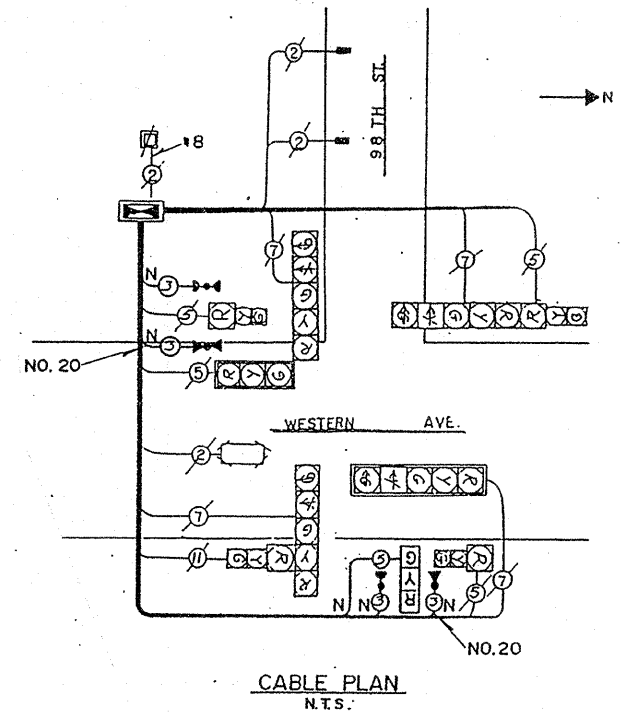
Code No.	Pay Item	Unit	Quantity
85000200	MAINTENANCE OF EXISTING TRAFFIC SIGNAL INSTALLATION	EACH	
87301305	ELECTRIC CABLE IN CONDUIT, LEAD-IN, NO. 14 1 PAIR	FOOT	
88500100	INDUCTIVE LOOP DETECTOR	EACH	
88600100	DETECTOR LOOP, TYPE 1	FOOT	

NOTE:
THIS PLAN IS FOR THE PURPOSE OF REPLACING THE DETECTOR LOOPS ONLY. ALL OTHER INFORMATION SHOWN IS NOT RELATED AND WILL BE DISREGARDED.



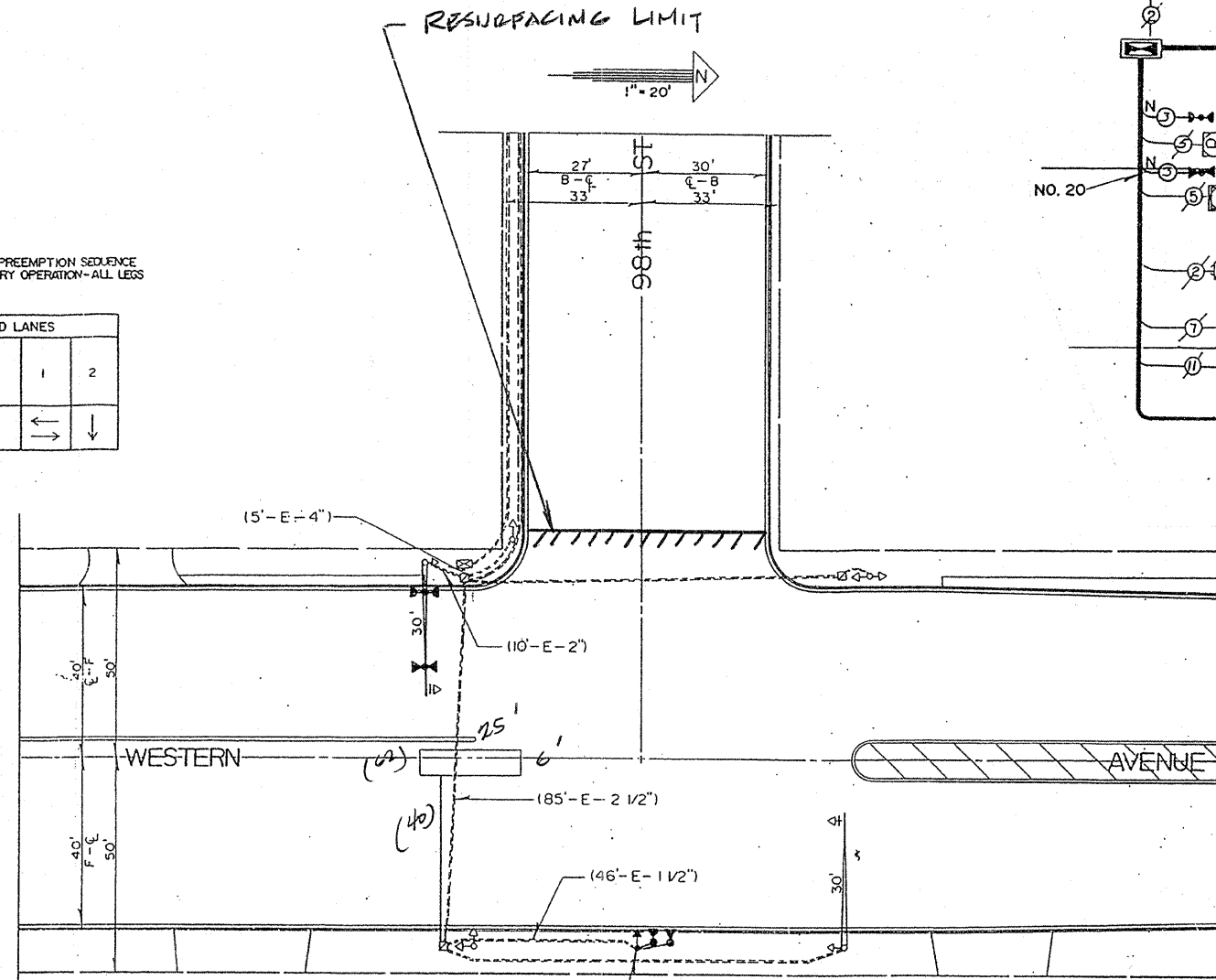
EMERGENCY VEHICLE PREEMPTION SEQUENCE
NOTES FOR DUAL ENTRY OPERATION-ALL LEGS

PROPOSED LANE	PROPOSED LANE
PRIORITY LANE	INTERVAL
MOVEMENT	



TRAFFIC SIGNAL LEGEND

- | | PROPOSED | EXISTING |
|--|----------|----------|
| CONTROL | | |
| SERVICE INSTALLATION | | |
| SIGNAL HEAD | | |
| SIGNAL HEAD WITH BACKPLATE | | |
| SIGNAL HEAD, PEDESTRIAN | | |
| SIGNAL POST | | |
| MAST ARM ASSEMBLY AND POLE, STEEL | | |
| HANDHOLE | | |
| HEAVY DUTY HANDHOLE | | |
| DOUBLE HANDHOLE | | |
| G.S. CONDUIT | | |
| PEDESTRIAN PUSHBUTTON DETECTOR | | |
| DETECTOR LOOP | | |
| CONCRETE JUNCTION BOX | | |
| CAST IRON JUNCTION BOX | | |
| COMMON TRENCH | | |
| MAST ARM ASSEMBLY AND POLE, ALUMINUM | | |
| EMERGENCY VEHICLE SYSTEM DETECTOR | | |
| SIGNAL HEAD OPTICALLY PROGRAMMED | | |
| WOOD POLE | | |
| RACEWAY FOR MAGNETIC DETECTOR, TYPE I OR TYPE II | | |
| VEHICLE DETECTOR, NON-COMPENSATED MAGNETIC TYPE | | |
| RAILROAD CONTROL CABINET | | |
| CONFIRMATION BEACON | | |



REMOVE EXIST. 13 FT. SIGNAL POST AND REPLACE WITH 18 FT. SIGNAL POST. FOUNDATION TO REMAIN. FURNISH AND INSTALL NEW 1 FACE - 3 SECTION SIGNAL HEAD. REMOVE EXISTING SIGNAL HEAD.

REPLACE ALL DETECTOR LOOPS AS SHOWN
(WITHIN THE RESURFACING LIMITS)

CODE NO.	QUANTITY	UNIT	ITEM
86600600	102	FOOT	DETECTOR LOOP REPLACEMENT

FILE NAME :	USER NAME : konthphixoybc	DESIGNED -	REVISED -	STATE OF ILLINOIS DEPARTMENT OF TRANSPORTATION	DETECTOR LOOP REPLACEMENT WESTERN AV. @ 98TH STREET	F.A. RTE.	SECTION	COUNTY	TOTAL SHEETS	SHEET NO.
c:\projects\traffic\1870027\us12.20.45.dgn	DRAWN -	REVISED -	370			2008-005 RS	COOK	22	9	
PLOT SCALE : 40.0000 "/td> <td>CHECKED -</td> <td>REVISED -</td> <td colspan="3">CONTRACT NO. 60E29</td>	CHECKED -	REVISED -	CONTRACT NO. 60E29							
PLOT DATE : 2/29/2008	DATE	REVISED -	ILLINOIS FED. AID PROJECT							