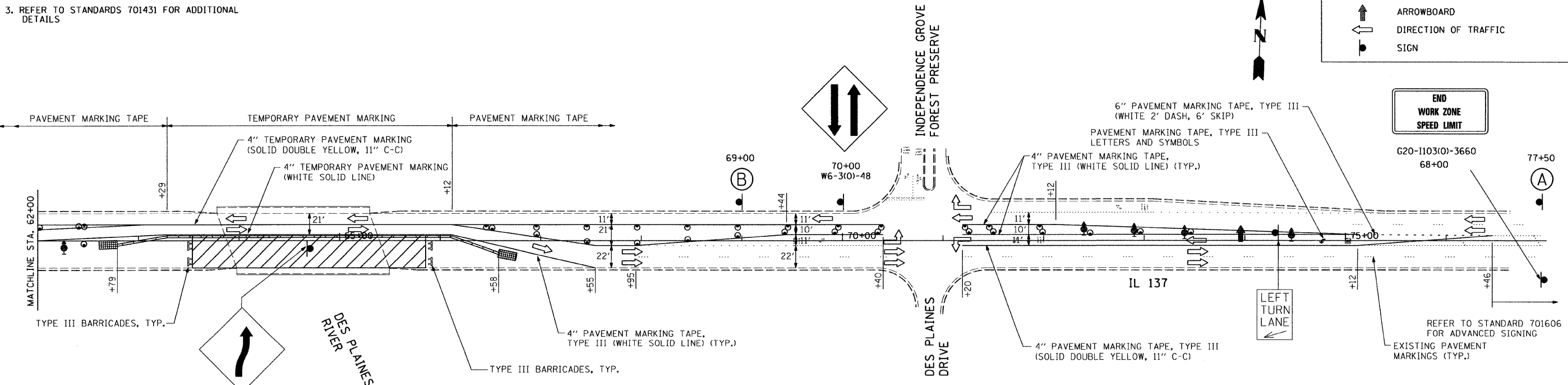


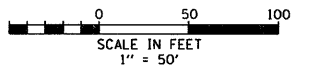
- NOTES:
1. BARRICADES PROPOSED AT ALL LANE CLOSURE TAPERS SHALL BE DIRECTION INDICATOR BARRICADES.
 2. SEE BRIDGE CONSTRUCTION STAGING PLAN FOR BRIDGE STAGING AND DIMENSIONS
 3. REFER TO STANDARDS 701431 FOR ADDITIONAL DETAILS

LEGEND:

- TEMPORARY CONCRETE BARRIER
- CONSTRUCTION ZONE
- IMPACT ATTENUATORS, TEMPORARY (NON-REDIRECTIVE)
- TRAFFIC DRUMS @ 25' C-C
- TYPE III BARRICADE
- DIRECTIONAL INDICATOR BARRICADE
- ARROWBOARD
- DIRECTION OF TRAFFIC SIGN
- SIGN



- STAGE I**
1. INSTALL VEHICULAR TRAFFIC CONTROL AS SHOWN
 2. SHIFT EASTBOUND TRAFFIC TO WESTBOUND LANES AND MEDIAN
 3. RECONSTRUCT SOUTHERN PORTION OF BRIDGE AND BRIDGE APPROACH PAVEMENT.



| | | | | | | | | | | | |
|-------------|-----------------------------|-----------------|-----------|-----------------------------------------------------------|-----------------------------------------------------|---------------|------------------------------------|---------------------|---------------------------|--------------------|--|
| FILE NAME = | USER NAME = .USER. | DESIGNED - WS | REVISED - | STATE OF ILLINOIS DEPARTMENT OF TRANSPORTATION | SUGGESTED MAINTENANCE OF TRAFFIC STAGE I | F.A. RTE. 352 | SECTION 56 B-1-2 | COUNTY LAKE | TOTAL SHEETS 26 | SHEET NO. 6 | |
| *FILEL# | PLOT SCALE = 50.5353' / IN. | DRAWN - AJR | REVISED - | | | SCALE: 50' | SHEET NO. OF SHEETS STA. TO STA. | FED. ROAD DIST. NO. | ILLINOIS FED. AID PROJECT | CONTRACT NO. 60D91 | |
| | PLOT DATE = 1/13/2009 | CHECKED - RJS | REVISED - | | | | | | | | |
| | | DATE - 01/04/09 | REVISED - | | | | | | | | |