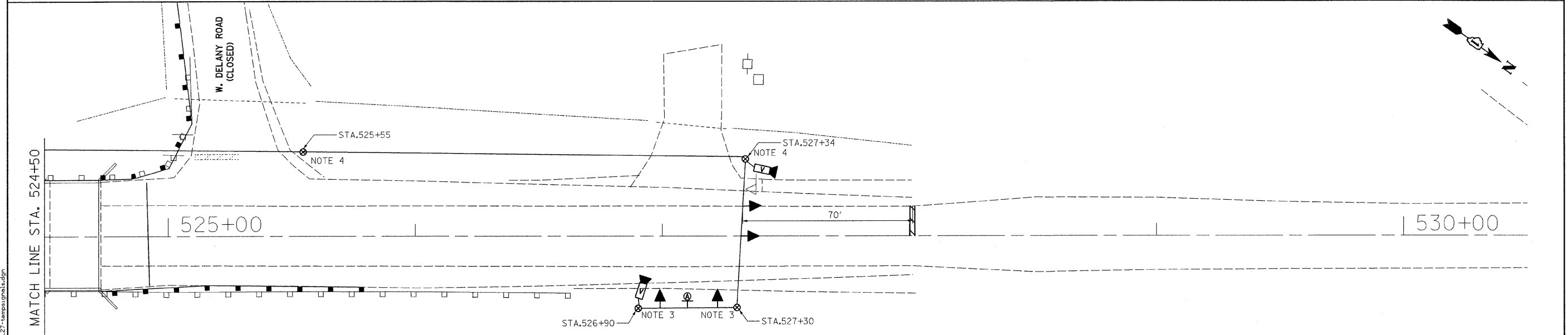


- ELECTRIC SERVICE DISCONNECT, LIGHTING AND TRAFFIC SIGNAL (SEE LIGHTING PLANS)
- PROPOSED ELECTRIC SERVICE 120/240V (SEE LIGHTING PLANS)
- TEMPORARY TRAFFIC SIGNAL HEAD SPAN WIRE MOUNTED ORIGINAL LOCATION
- TEMPORARY TRAFFIC SIGNAL HEAD SPAN WIRE MOUNTED SECONDARY LOCATION
- TEMPORARY WOOD POLE (CLASS 5 OR BETTER) 45 FOOT (13.7M) MINIMUM
- TEMPORARY CONTROLLER CABINET
- TEMPORARY SPAN WIRE, TETHER WIRE, AND CABLE

- TEMPORARY TRAFFIC SIGNAL LEGEND**
- TEMPORARY PEDESTRIAN PUSHBUTTON DETECTOR
  - MICROWAVE VEHICLE SENSOR
  - EMERGENCY VEHICLE SYSTEM DETECTOR
  - CONFIRMATION BEACON
  - COMMON TRENCH
  - UNIT DUCT
  - HANDHOLE
  - HEAVY DUTY HANDHOLE
  - DOUBLE HANDHOLE

- TEMPORARY SERVICE INSTALLATION
- TEMPORARY PEDESTRIAN SIGNAL HEAD, BRACKET MOUNTED
- TELEPHONE CONNECTION
- G.S. CONDUIT IN TRENCH OR PUSHED
- VIDEO VEHICLE SENSOR
- CLOSED CIRCUIT TV
- UN-INTERRUPTABLE POWER SUPPLY (UPS)

NO TURN ON RED  
R10-11A  
24"x30"  
TYPICAL SIGN PANEL TYPE 1



- NOTES:**
- 1 CONTROLLER WITH STEEL BASE CABINET AND BATTERY BACK-UP CABINET SHALL BE MOUNTED ON A WOOD STAND.
  - 2 UN-INTERRUPTABLE POWER SUPPLY(UPS) SHALL BE INCLUDED IN "TEMPORARY BRIDGE TRAFFIC SIGNAL INSTALLATION" PAY ITEM.
  - 3 WOOD POLES INSTALLED BY THE TRAFFIC CONTRACTOR
  - 4 PROPOSED WOOD POLES FOR ROADWAY LIGHTING SHALL BE USED TO SUPPORT TRAFFIC SIGNAL CABLE.
  - 5 TRAFFIC SIGNAL AND ROADWAY LIGHTING SHALL UTILIZE A COMBINATION ELECTRIC SERVICE BOX. (SEE DETAIL ON LIGHTING PLAN)
  - 6 ALL SIGNAL HEADS SHALL BE L.E.D.
  - 7 THE TEMPORARY TRAFFIC SIGNAL CONTROLLER SUPPLIED BY THE CONTRACTOR SHALL INCLUDE THE CURRENT SOFTWARE VERSION A7 THE TIME OF INSTALLATION

FILE NAME = n:\p\0\3329\3329\_27\Design\ProposedPlan\3329\_27-temporarytraffic.dgn

**Ciorba Group, Inc.**  
CONSULTING ENGINEERS  
5507 North Cumberland Avenue, Suite 402  
Chicago, Illinois 60656  
Tel: 773.775.4009 Fax 773.775.4014

USER NAME = wlanaster	DESIGNED -	REVISED -
PLOT SCALE = 28.4823' / IN.	DRAWN -	REVISED -
PLOT DATE = 1/13/2009	CHECKED -	REVISED -
DATE = 05/15/2008	REVISIONS -	REVISED -

**STATE OF ILLINOIS  
DEPARTMENT OF TRANSPORTATION**

**FAP 852/US ROUTE 52  
OVER JACKSON CREEK  
TEMPORARY TRAFFIC SIGNAL PLAN**

SCALE: 1"=20'  
SHEET NO. OF SHEETS STA. TO STA.

F.A.P. RTE.	SECTION	COUNTY	TOTAL SHEETS	SHEET NO.
852	18 B-4-R-1	WILL	27	11
FED. ROAD DIST. NO. ILLINOIS FED. AID PROJECT			CONTRACT NO. 60DB4	