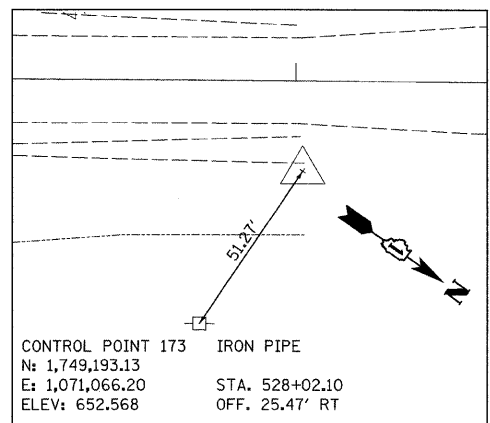
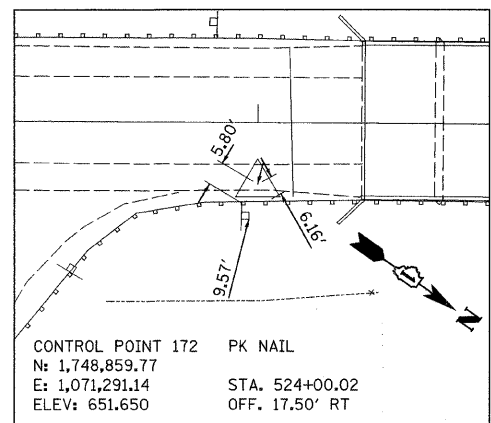
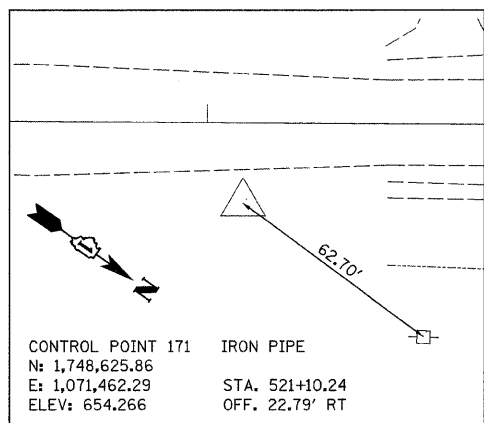
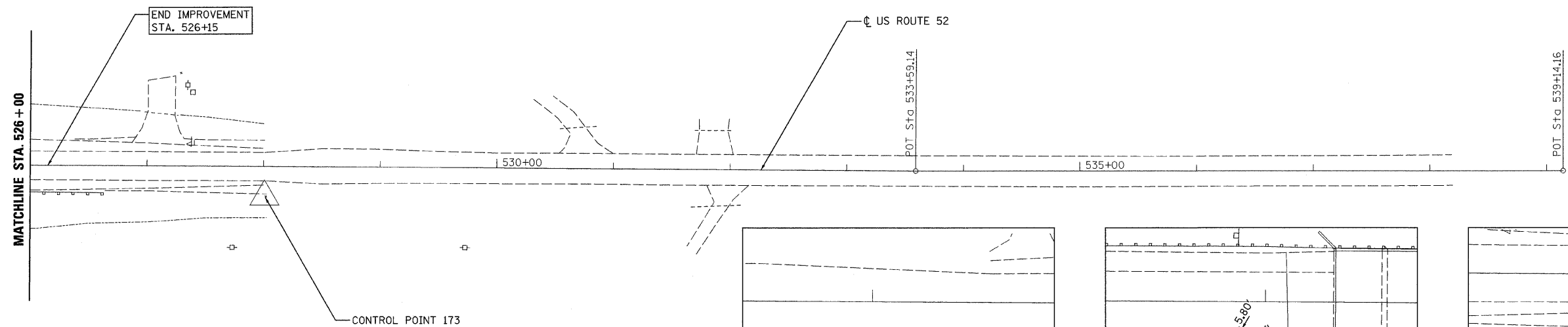


PROJECT COORDINATES  
US ROUTE 52 CENTERLINE

DESCRIPTION	NORTHING	EASTING
P.O.T. 511+00.00	1,747,786.68	1,072,025.20
P.O.T. 533+59.14	1,749,633.95	1,070,724.71
P.O.T. 539+14.16	1,750,085.55	1,070,402.04



FILE NAME = c:\p\proj\3329\3329\_27\Design\ProposedPlan\3329\_27\_align.dgn

**Ciorba Group, Inc.**  
CONSULTING ENGINEERS  
8507 North Cumberland Avenue, Suite 402  
Chicago, Illinois 60658  
Tel. 773.775.4009 Fax 773.775.4014

USER NAME = wlancaaster	DESIGNED - DMM	REVISED -
PLOT SCALE = 51.0058" / IN.	DRAWN - DMM	REVISED -
PLOT DATE = 1/13/2009	CHECKED - MJL	REVISED -
	DATE - 05/15/2008	REVISED -

**STATE OF ILLINOIS  
DEPARTMENT OF TRANSPORTATION**

**FAP 852 /US ROUTE 52  
US ROUTE 52 OVER JACKSON CREEK  
ALIGNMENT AND CONTROL POINTS**

SCALE: 1"=50' SHEET NO. OF SHEETS STA. TO STA.

F.A.P. RTE. 852	SECTION 18 B-4-R-1	COUNTY WILL	TOTAL SHEETS 27	SHEET NO. 4
FED. ROAD DIST. NO.		ILLINOIS FED. AID PROJECT CONTRACT NO. 60D84		