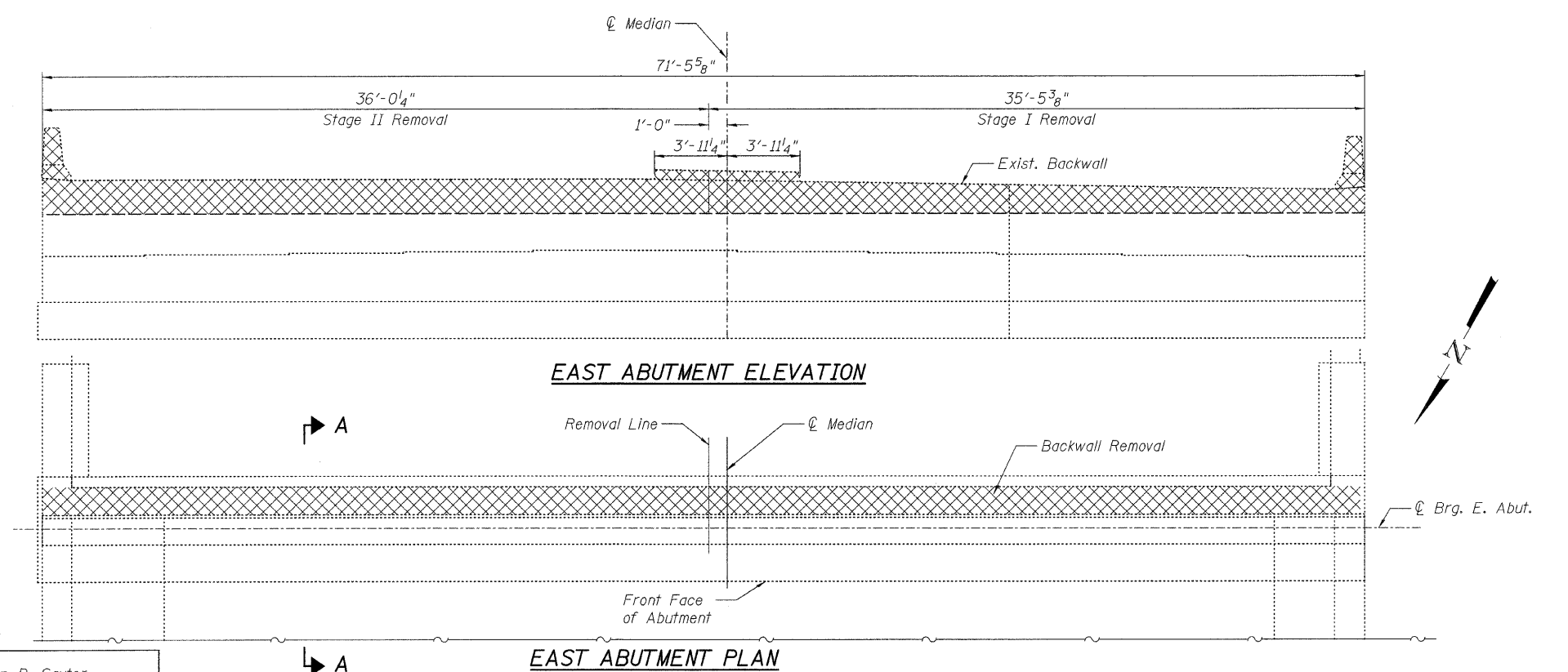
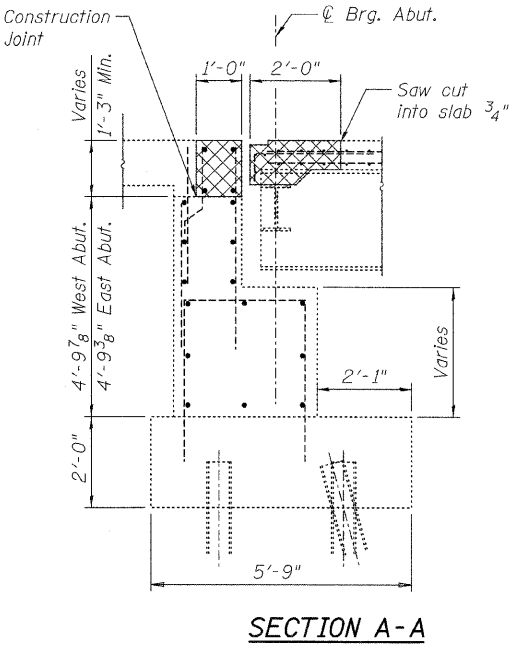
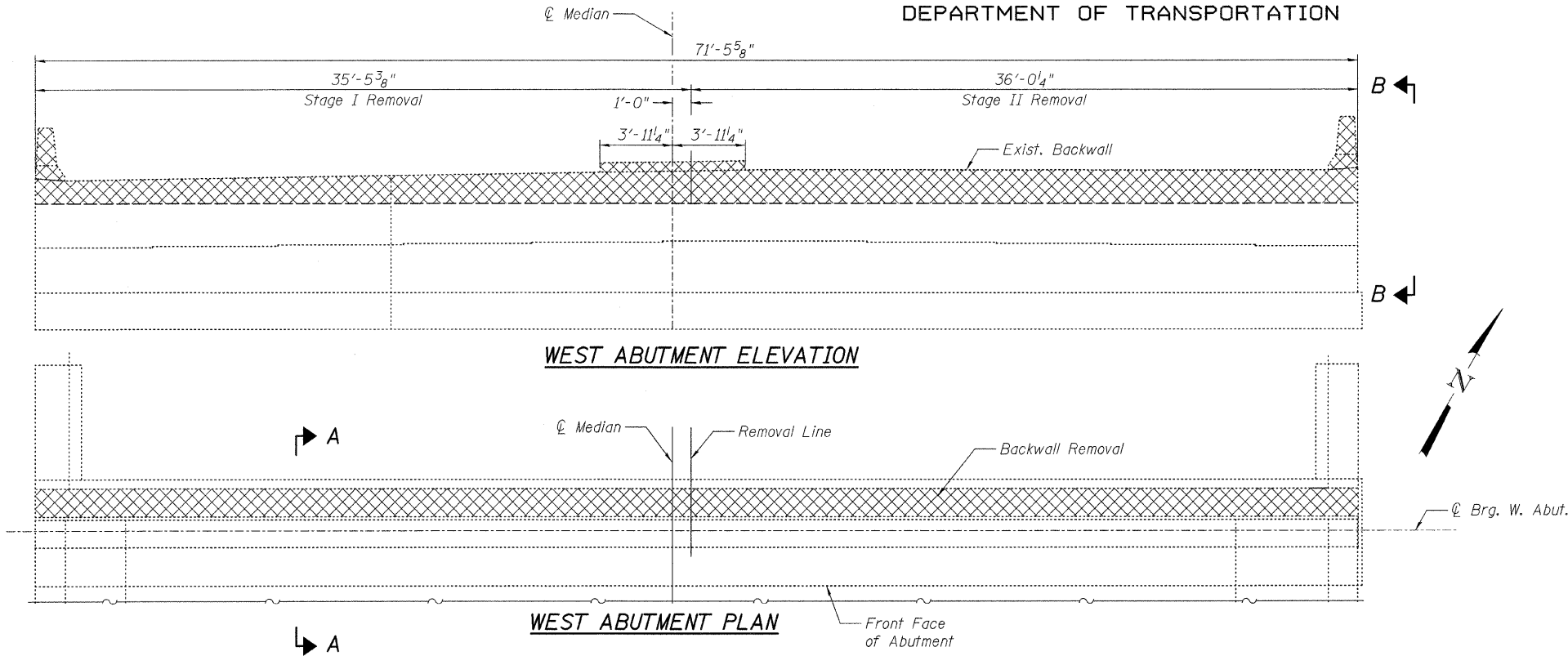


STATE OF ILLINOIS
DEPARTMENT OF TRANSPORTATION



NOTES:

- Existing vertical reinforcement protruding from the abutment backwall to remain in place. The existing reinforcement shall be sandblasted clean, straightened and incorporated into the new construction.
- Existing longitudinal deck rebar shall be sandblasted clean, straightened and incorporated into new construction.
- For view B-B, see sheet S6.
- All concrete removal quantities shown on this sheet.
- Work this sheet with Sheet S5 & S6.
- Removal of existing joint is included with Concrete Removal.

LEGEND:

XXXX Concrete Removal

BILL OF MATERIAL

Item	Unit	Quantity
Concrete Removal	Cu. Yd.	18.5

CONCRETE REMOVAL
US 30 OVER SOUTH RIVER STREET
STA. 280+57.0
S.N. 047-0030

DESIGNED	B. Sauter
CHECKED	E. Mroczek
DRAWN	R. Danley
CHECKED	B. Sauter

SHEET NO. S4 S9 SHEETS	F.A.P. RTE.	SECTION	COUNTY	TOTAL SHEETS	SHEET NO.
	349	11 HB-I	KENDALL	26	16
			CONTRACT NO. 60D83		
FED. ROAD DIST. NO.		ILLINOIS FED. AID PROJECT			

1/13/2009 rdanley