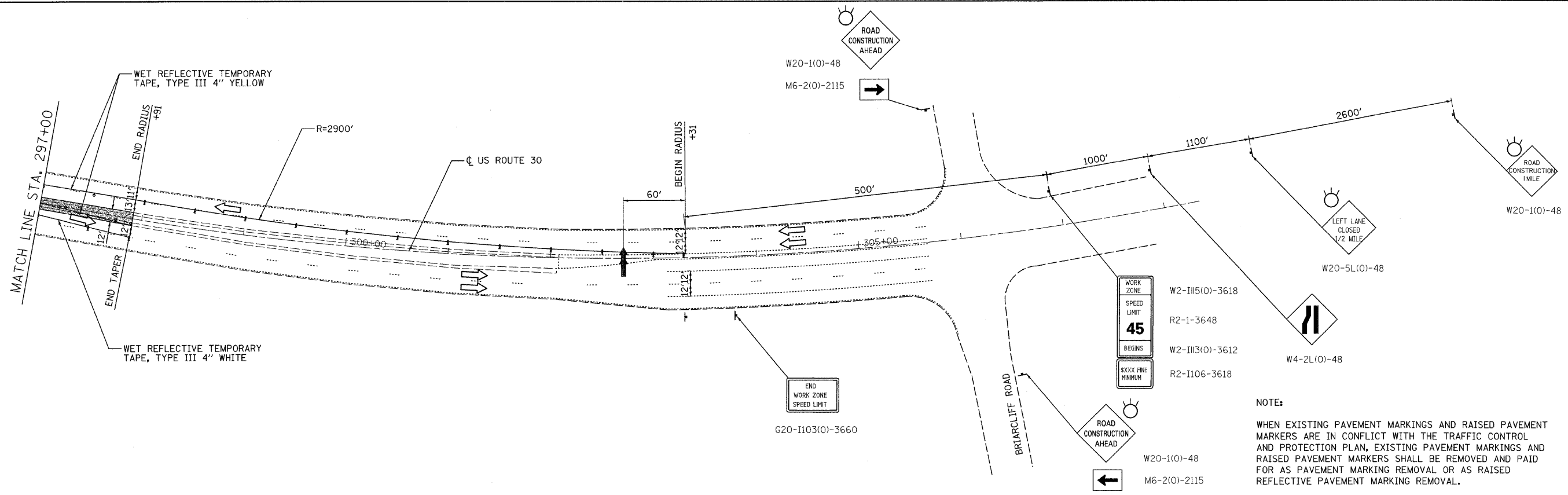
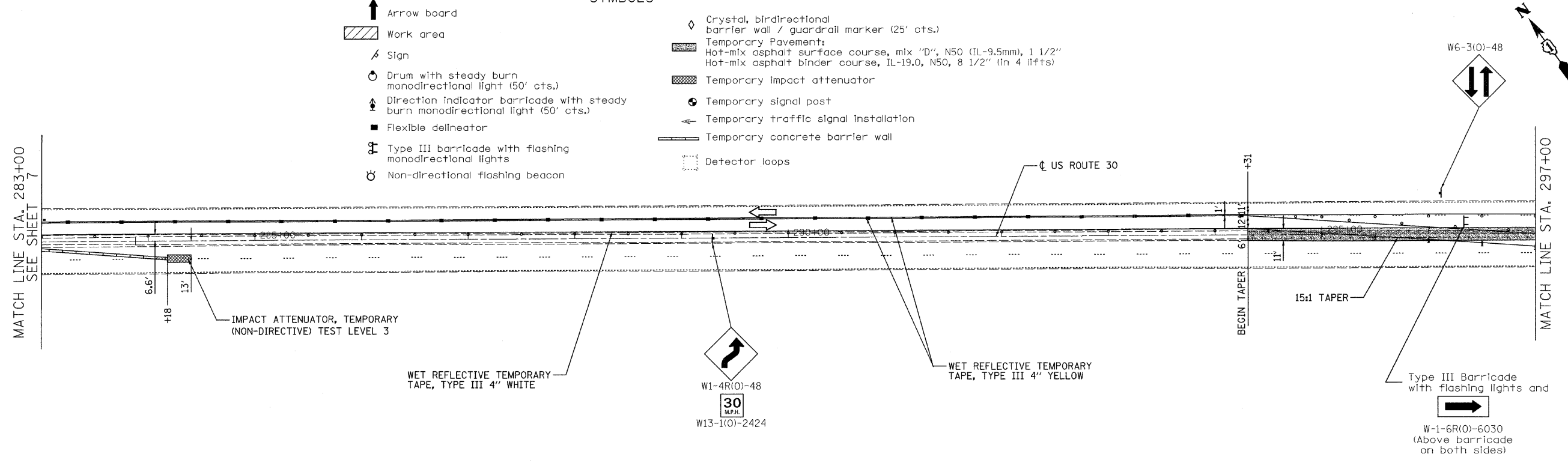


- SYMBOLS**
- ↑ Arrow board
  - ▨ Work area
  - ⚡ Sign
  - ⊙ Drum with steady burn monodirectional light (50' cts.)
  - ⬆ Direction indicator barricade with steady burn monodirectional light (50' cts.)
  - Flexible delineator
  - ⚡ Type III barricade with flashing monodirectional lights
  - ⊙ Non-directional flashing beacon
  - ◇ Crystal, bidirectional barrier wall / guardrail marker (25' cts.)
  - ▨ Temporary Pavement: Hot-mix asphalt surface course, mix "D", N50 (IL-9.5mm), 1 1/2" Hot-mix asphalt binder course, IL-19.0, N50, 8 1/2" (In 4 lifts)
  - ▨ Temporary impact attenuator
  - ⊙ Temporary signal post
  - ⬆ Temporary traffic signal installation
  - ▨ Temporary concrete barrier wall
  - ⊙ Detector loops



**NOTE:**  
WHEN EXISTING PAVEMENT MARKINGS AND RAISED PAVEMENT MARKERS ARE IN CONFLICT WITH THE TRAFFIC CONTROL AND PROTECTION PLAN, EXISTING PAVEMENT MARKINGS AND RAISED PAVEMENT MARKERS SHALL BE REMOVED AND PAID FOR AS PAVEMENT MARKING REMOVAL OR AS RAISED REFLECTIVE PAVEMENT MARKING REMOVAL.

FILE NAME = c:\puro\3329\3329\_20\design\puro\3329\_20\10-TCF12.dgn

**Ciorba Group, Inc.**  
CONSULTING ENGINEERS  
5507 North Cumberland Avenue, Suite 402  
Chicago, Illinois 60656  
Tel. 773.775.4009 Fax 773.775.4014

USER NAME = wlancaster	DESIGNED - JCC	REVISED -
DRAWN - JCC	REVISIONS -	
PLOT SCALE = 5/16" = 1' / IN.	CHECKED - MJL	REVISED -
PLOT DATE = 1/13/2009	DATE = 01/30/08	REVISED -

**STATE OF ILLINOIS**  
**DEPARTMENT OF TRANSPORTATION**

**FAP 349 / US ROUTE 30**  
**OVER RIVER STREET**  
**TRAFFIC CONTROL AND PROTECTION - STAGE 1**

F.A.P. RTE. 349	SECTION 11 HB-1	COUNTY KENDALL	TOTAL SHEETS 26	SHEET NO. 8
CONTRACT NO. 60DB3				
FED. ROAD DIST. NO. - ILLINOIS FED. AID PROJECT				