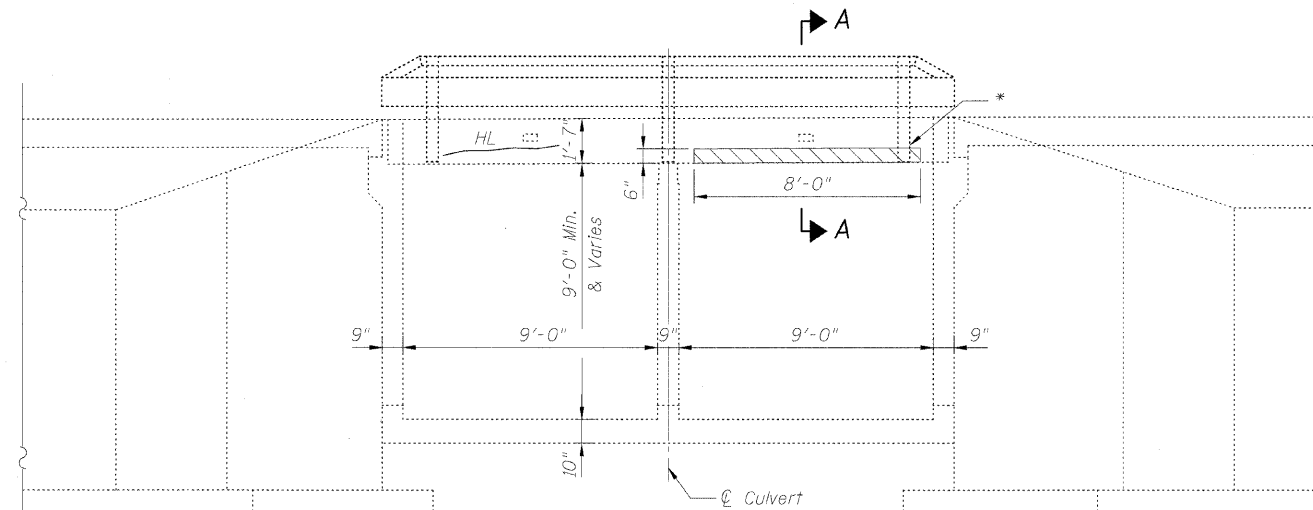
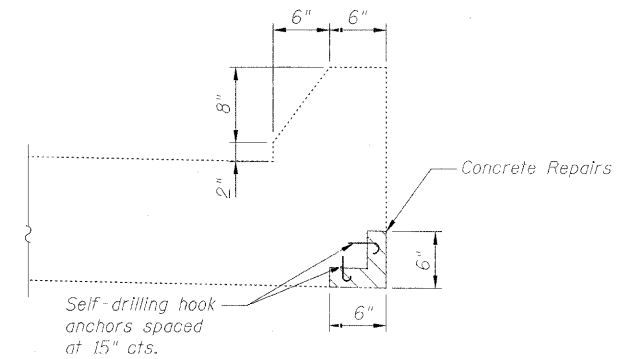


STATE OF ILLINOIS
DEPARTMENT OF TRANSPORTATION



SOUTH HEADWALL REPAIRS

*-The existing rail post shall be removed during the repairs and the anchor devices shall be reused. The existing steel rail tubing shall remain in place during the work. Cost included with Structural Repair of Concrete.



SECTION A-A

LEGEND

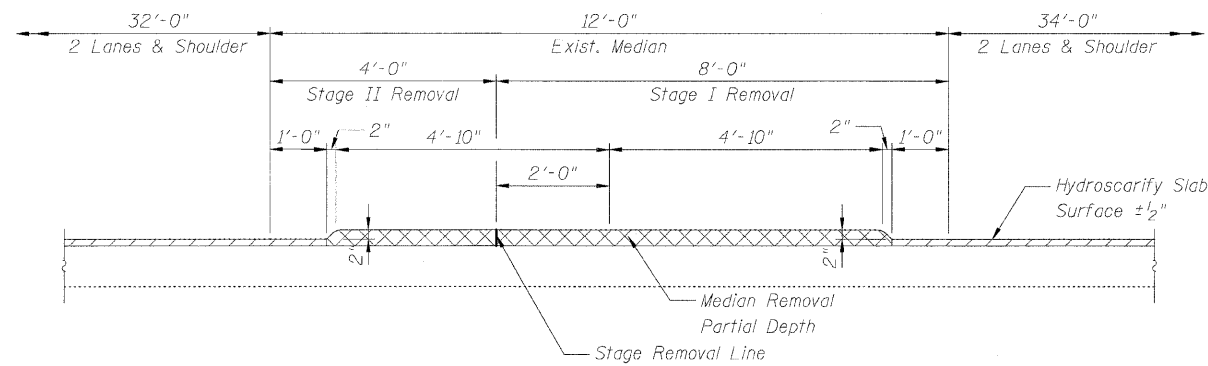
- HL Hairline Crack (No Repairs)
- Structural Repair of Concrete
- Hydroscarify Slab Surface
- Median Removal Partial Depth
- Concrete Superstructure

NOTES:

1. Repairs shall include but not be limited to the areas shown. The actual areas to be repaired will be determined by engineer at the time of construction and marked on as-built plans.
2. The contractor is ultimately responsible for the means and methods to assure the complete stability of the structural members during construction.
3. Protective coat to be applied to roadway, median and inside faces of curbs.
4. The repair concrete shall be securely anchored to the headwall using self drilling anchors. Cost included with Structural Repair of Concrete (Depth Equal to or Less Than 5 Inches).

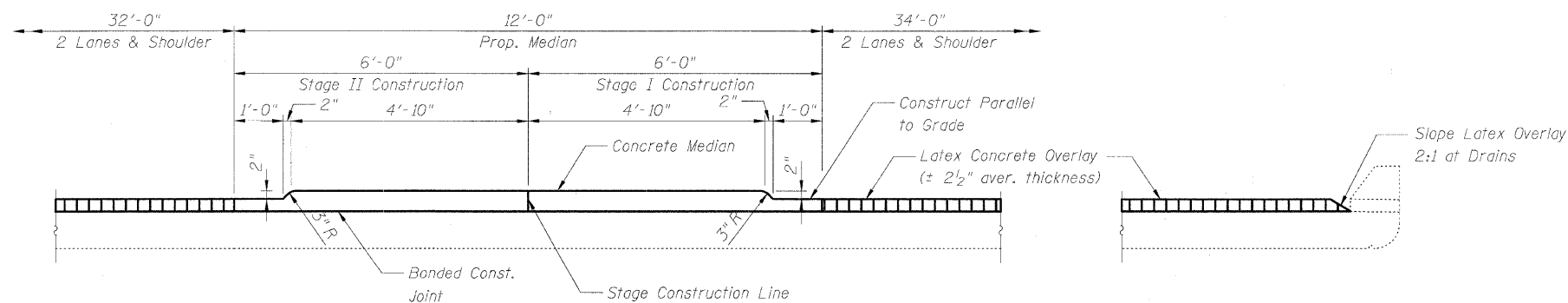
BILL OF MATERIAL

ITEM	UNIT	QUANTITY
Concrete Superstructure	Cu.Yd.	3.3
Protective Coat	Sq. Yd.	182
Median Removal Partial Depth	Sq. Ft.	203
Structural Repair of Concrete (Depth Equal to or Less than 5 inches)	Sq. Ft.	8.0



SECTION THRU EXIST. MEDIAN

Looking East



SECTION THRU PROP. MEDIAN

Looking East

SECTION AT DRAINS

DETAILS
IL RTE. 38 OVER KRESS CREEK
STA. 169+84.54
S.N. 022-0150

SHEET NO. S3	F.A.P. RTE. 347	SECTION 2 Y-B-I	COUNTY DU PAGE	TOTAL SHEETS 31	SHEET NO. 29
S3 SHEETS			CONTRACT NO. 60D82		
FED. ROAD DIST. NO.		ILLINOIS FED. AID PROJECT			

DESIGNED	B. Sauter
CHECKED	E. Mroczek
DRAWN	R. Danley
CHECKED	B. Sauter



Ciorba Group, Inc.
CONSULTING ENGINEERS
5507 North Cumberland Avenue, Suite 402 Chicago, Illinois 60656
Tel. 773.775.4009 Fax 773.775.4014 Email chicago@ciorba.com

1/13/2009 r-danley N:\PROJ\3329\3329.DWG Design\Structural\CAD\Sheet\3329_29.dwg Date:1/13/09