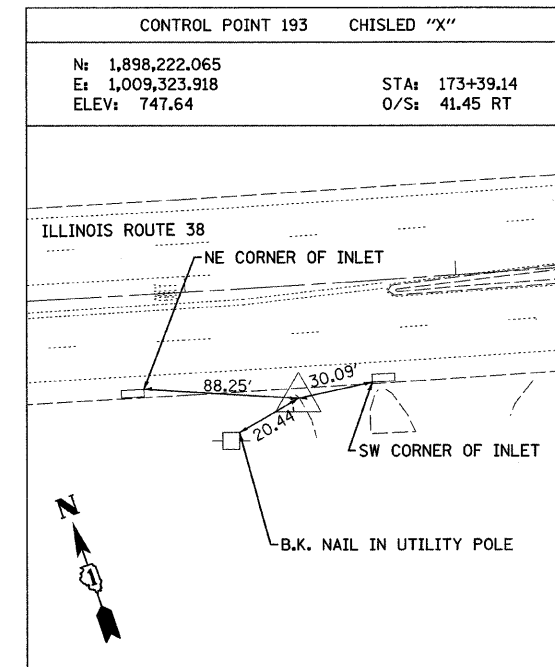
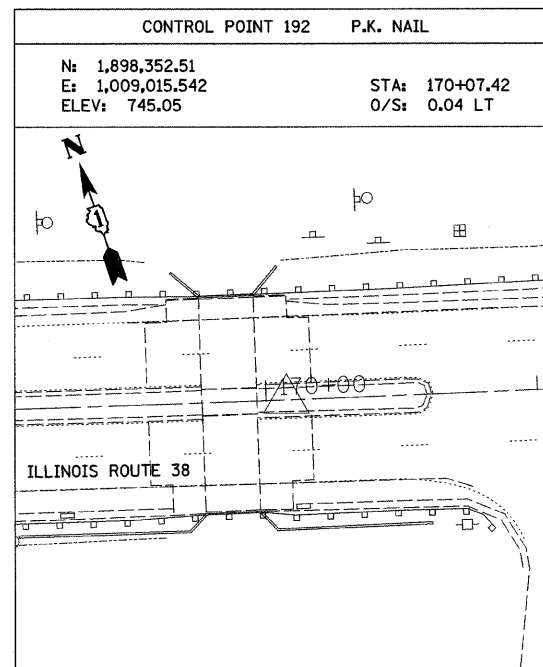
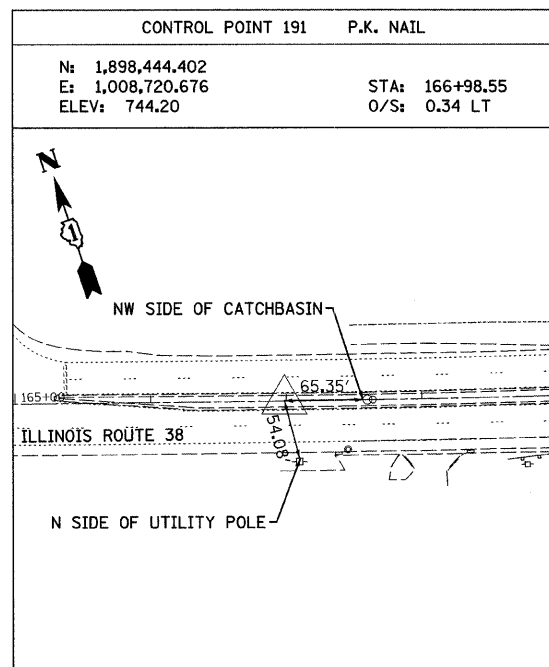
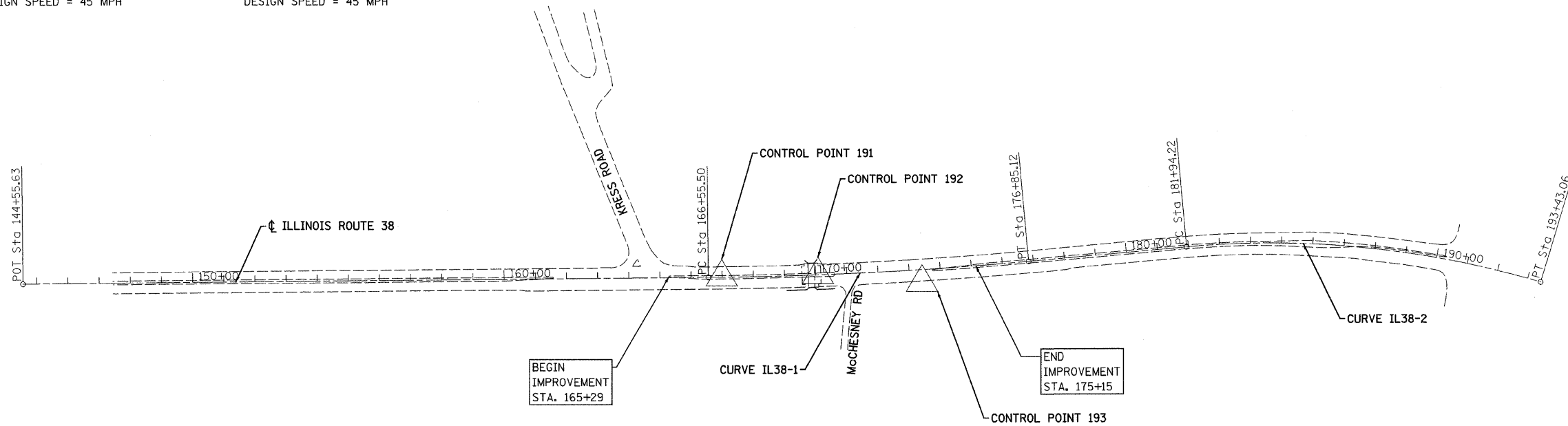


EXIST. CURVE IL38-1
 PI STA. = 171+70.59
 $\Delta = 4^\circ 38' 00''$ (LT)
 $D = 0^\circ 27' 00''$
 $R = 12,732.40'$
 $T = 515.09'$
 $L = 1,029.62'$
 $E = 10.41'$
 P.C. STA. = 166+55.50
 P.T. STA. = 176+85.12
 DESIGN SPEED = 45 MPH

EXIST. CURVE IL38-2
 PI STA. = 187+75.76
 $\Delta = 21^\circ 56' 29''$ (RT)
 $D = 1^\circ 54' 35''$
 $R = 3,000.00'$
 $T = 581.55'$
 $L = 1,148.84'$
 $E = 55.85'$
 P.C. STA. = 181+94.22
 P.T. STA. = 193+43.06
 DESIGN SPEED = 45 MPH

ILLINOIS ROUTE 38 CENTERLINE		
DESCRIPTION	NORTHING	EASTING
P.O.T.	144+55.63	1,899,142.397
P.C.	166+55.50	1,898,457.416
P.T.	176+85.12	1,898,176.708
P.C.	181+94.22	1,898,057.787
P.T.	193+43.06	1,897,584.649

BENCHMARK
 RAILROAD SPIKE IN NORTH FACE OF THIRD UTILITY
 POLE EAST OF STRUCTURE # 022-0150 ELEV. 749.66



FILE NAME = n:\proj\3329\3329_25\design\proposals\plan\3329_28-64-01\plan.dgn