

F.A.P. RTE.	SECTION	COUNTY	TOTAL SHEETS	SHEET NO.
347	2 Y-B-I	DU PAGE	34	1
FED. ROAD DIST. NO.	ILLINOIS CONTRACT NO.		60D82	

STATE OF ILLINOIS
DEPARTMENT OF TRANSPORTATION
DIVISION OF HIGHWAYS

**PROPOSED
HIGHWAY PLANS**

FAP 347 / ILLINOIS ROUTE 38
OVER KRESS CREEK
SECTION 2 Y-B-I
BOX CULVERT SLAB OVERLAY
PROJECT: *ESP-0347 (021)*
DU PAGE COUNTY
C-91-116-08

FOR INDEX OF SHEETS SEE SHEET NUMBER 2

THIS IMPROVEMENT IS LOCATED
IN WINFIELD TOWNSHIP

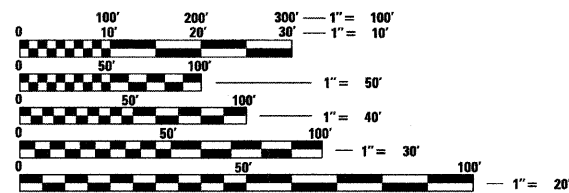
TRAFFIC DATA

2005 ADT - 23700
POSTED SPEED LIMIT - 45 MPH

IMPROVEMENT LOCATION
SN: 022-0150

IL 38 OVER KRESS CREEK

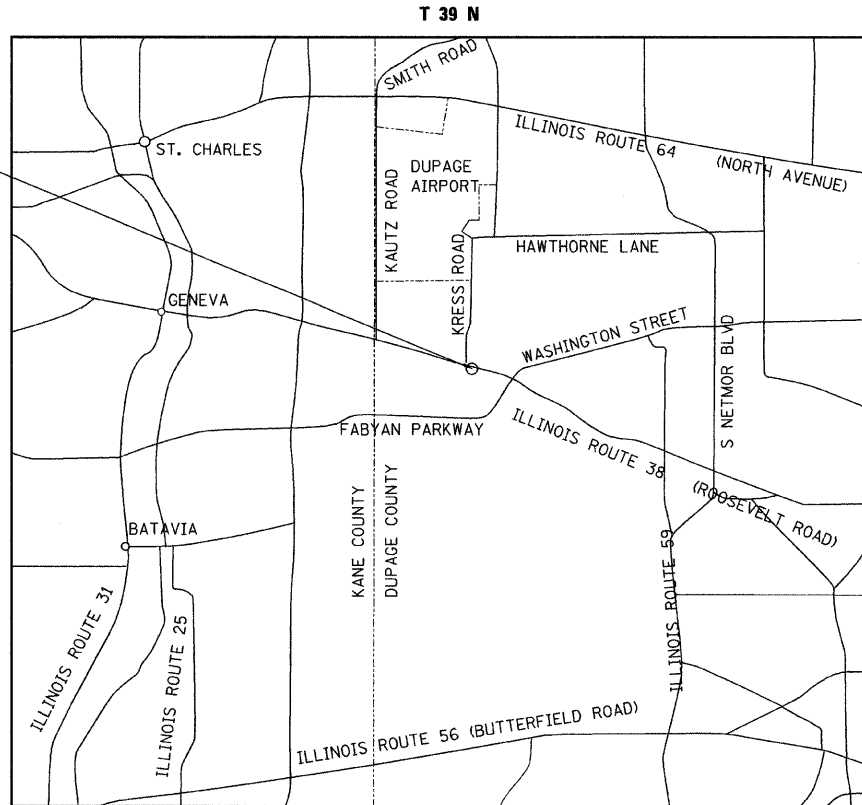
SN:022-0150
DOBLE BARREL 9'-0" x 9'-9"
CONCRETE BOX CULVERT



FULL SIZE PLANS HAVE BEEN PREPARED USING STANDARD ENGINEERING SCALES. REDUCED SIZED PLANS WILL NOT CONFORM TO STANDARD SCALES. IN MAKING MEASUREMENTS ON REDUCED PLANS, THE ABOVE SCALES MAY BE USED.

J.U.L.I.E.
JOINT UTILITY LOCATION INFORMATION FOR EXCAVATION
1-800-892-0123
OR 811

Clorba Group, Inc.
DESIGN FIRM
REGISTRATION NUMBER
184-001016
CONSULTING ENGINEERS
SUITE 402, 5507 NORTH CUMBERLAND AVE
CHICAGO, ILLINOIS 60656 ☎ (773) 775-4009



WINFIELD TOWNSHIP

LOCATION MAP
1" = 5000'

GROSS AND NET LENGTH OF PROJECT = 986 FT = 0.19 MI



LOCATION OF SECTION INDICATED THIS: - [black rectangle]

STATE OF ILLINOIS
062-057159
LICENSED PROFESSIONAL ENGINEER
OF ILLINOIS
Matthew J. Lehan
DATE: 1/8/2009
SEAL EXPIRES: 11/30/2009

STATE OF ILLINOIS
EWA K. MROCEK
081-006067
LICENSED PROFESSIONAL ENGINEER
STRUCTURAL
Ewa K. Mroczek
DATE: 1/8/2009
SEAL EXPIRES: 11/30/2010

STATE OF ILLINOIS
DEPARTMENT OF TRANSPORTATION
DIVISION OF HIGHWAYS
SUBMITTED JANUARY 8, 2009
Diana M. O'Keefe
DEPUTY DIRECTOR OF HIGHWAYS, REGION ENGINEER
March 12, 2009
Charles G. Ingersoll
ENGINEER OF DESIGN AND ENVIRONMENT
March 12, 2009
Christine M. Reed
DIRECTOR OF HIGHWAYS, CHIEF ENGINEER

**PRINTED BY THE AUTHORITY
OF THE STATE OF ILLINOIS**

DISTRICT 1 DESIGN PLAN PREPARATION ENGINEER: K. ENG (847) 705-4247

CONTRACT NO. 60D82