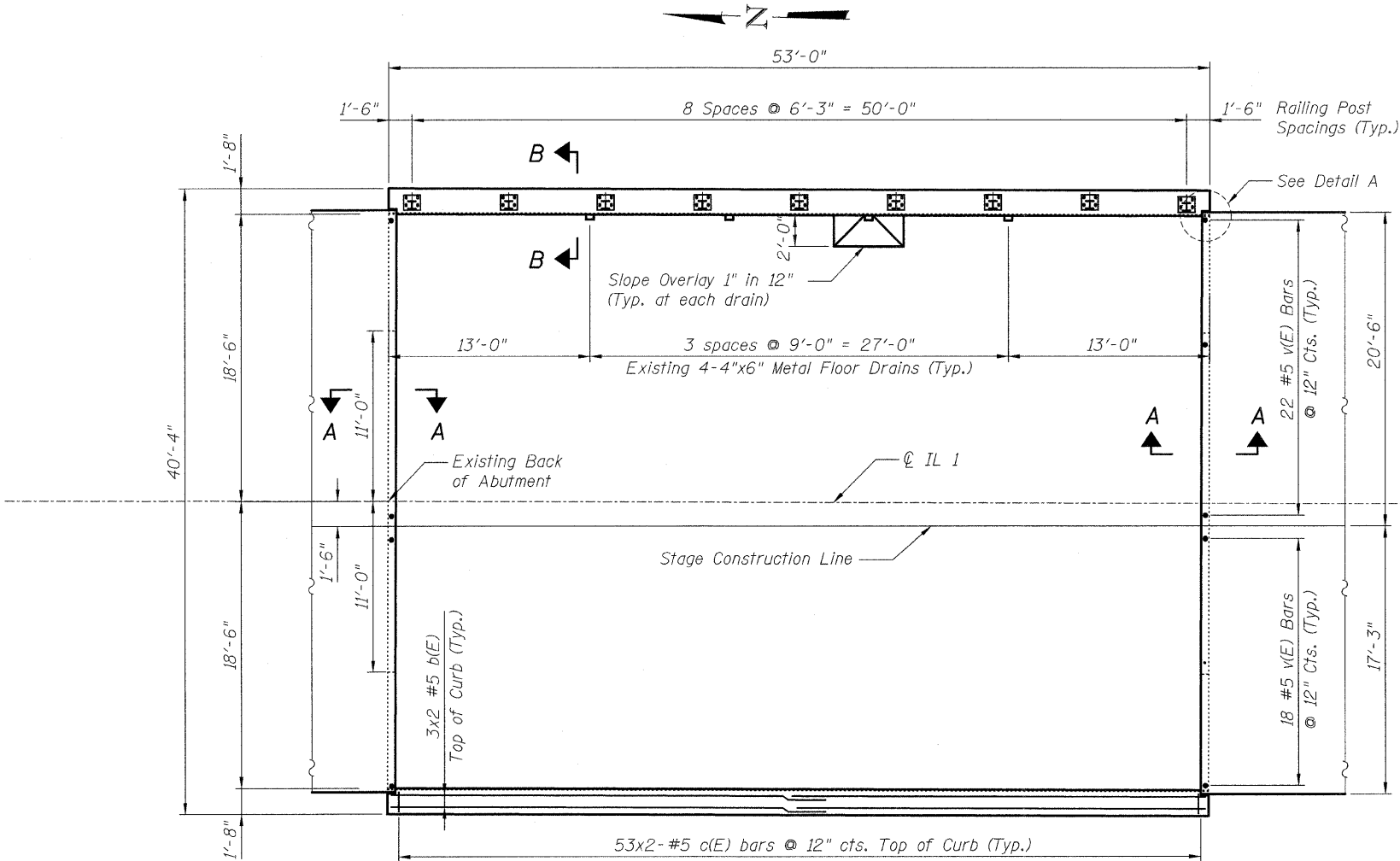
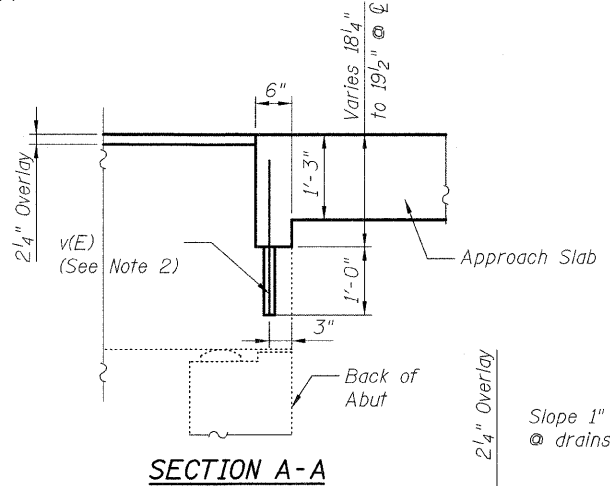


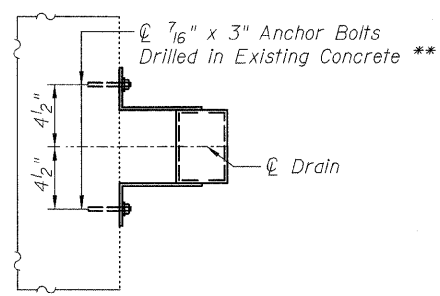
STATE OF ILLINOIS
DEPARTMENT OF TRANSPORTATION



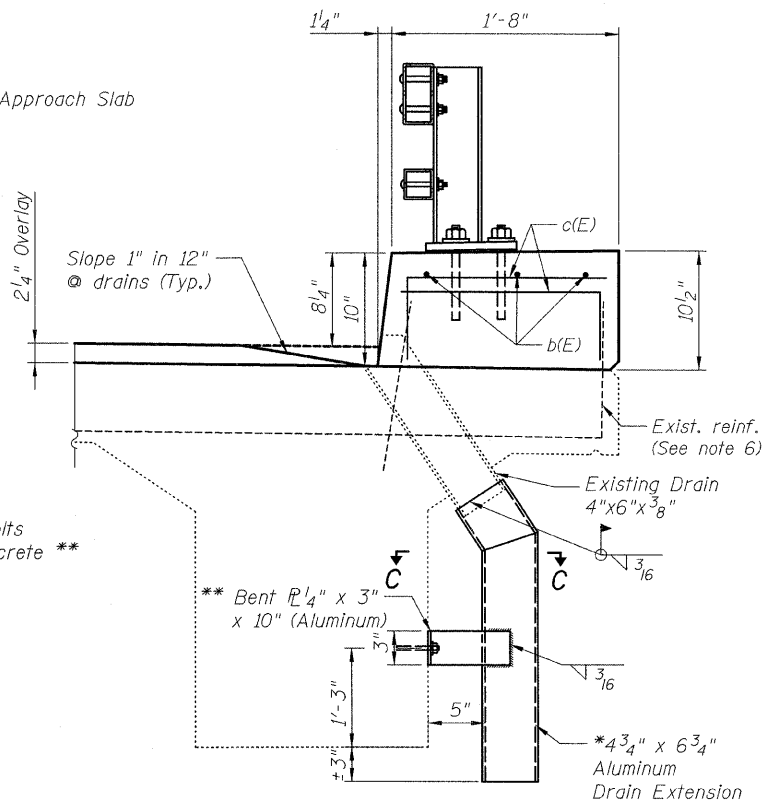
PLAN



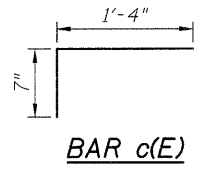
SECTION A-A



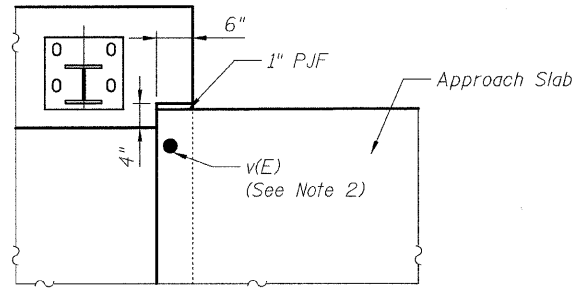
SECTION C-C



SECTION B-B



BAR c(E)



DETAIL A

NOTES:

1. Bars indicated thus 2x3-#5 etc. indicates 2 lines of bars with 3 lengths per line.
2. Drill and grout v(E) bars 12" min. in accordance with Article 584 of the Standard Specifications. Cost included with Concrete Superstructure.
3. For steel railing details see sheet S8.
4. Splice length for #5 bar is 2'-2".
5. Protective Coat to be applied to top and roadway face of curb and over the overlay.
6. Exist. reinforcement protruding from the deck to remain in place. The existing reinforcement shall be sandblasted clean, straightened and incorporated into the new construction. In case rebars are damaged, mechanical bar splicers shall be used or drill and grout #5 hooked anchor bolts. The cost of mechanical splicers and anchors is included with Concrete Superstructure.

BILL OF MATERIAL

Bar	No.	Size	Length	Shape
b(E)	12	#5	27'-6"	—
c(E)	212	#5	1'-11"	┌
v(E)	80	#5	2'-4"	—
Concrete Superstructure			Cu.Yd.	5.8
Reinforcement Bars, Epoxy Coated			Lb.	960
Bridge Deck Concrete Latex Overlay, 2 1/4 inches			Sq.Yd.	218
Bridge Deck Grooving			Sq.Yd.	218
Protective Coat			Sq.Yd.	248
Deck Drain Extensions			Each	8

* 3/16" Aluminum Sheets (Welded)
ASTM: B209 alloy 6061-T6
** Cost included in Deck Drain Extension

SUPERSTRUCTURE DETAILS
IL 1 OVER TRIM CREEK
STA. 533+25
S.N. 099-0079

SHEET NO. S7 S8 SHEETS	F.A.P. RTE. 332	SECTION 8 R-B-I-2	COUNTY WILL	TOTAL SHEETS 28	SHEET NO. 22
	CONTRACT NO. 60D81				
FED. ROAD DIST. NO. ILLINOIS FED. AID PROJECT					

DESIGNED B. Sauter
CHECKED E. Mroczek
DRAWN R. Danley
CHECKED B. Sauter

Giorba Group, Inc.
CONSULTING ENGINEERS
5507 North Cumberland Avenue, Suite 402 Chicago, Illinois 60656
Tel. 773.775.4009 Fax 773.775.4014 Email chicago@giorba.com

1/13/2009 rdbnley 1/13/2009 rdbnley