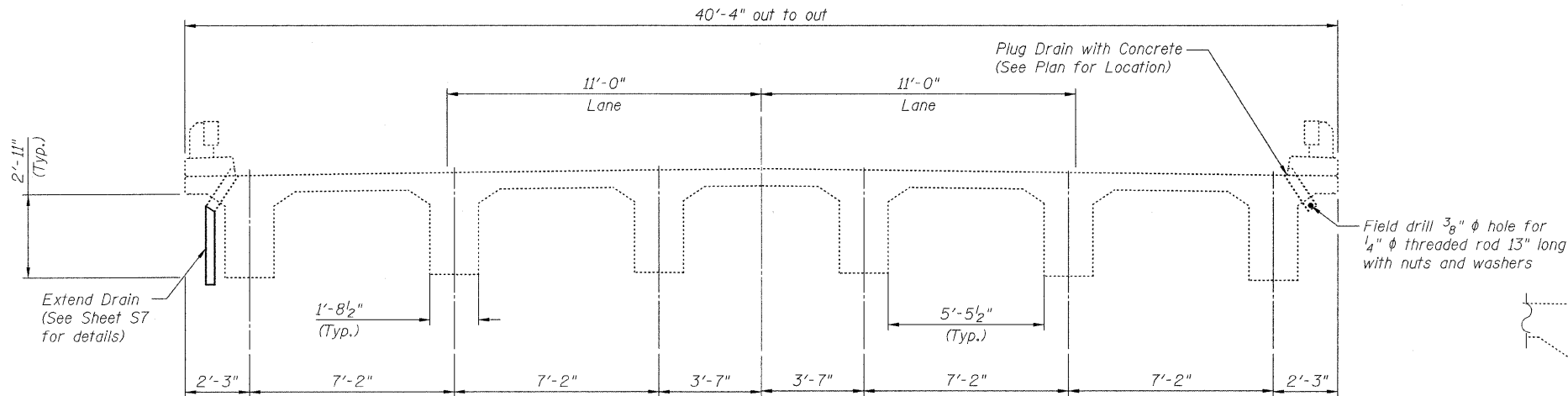
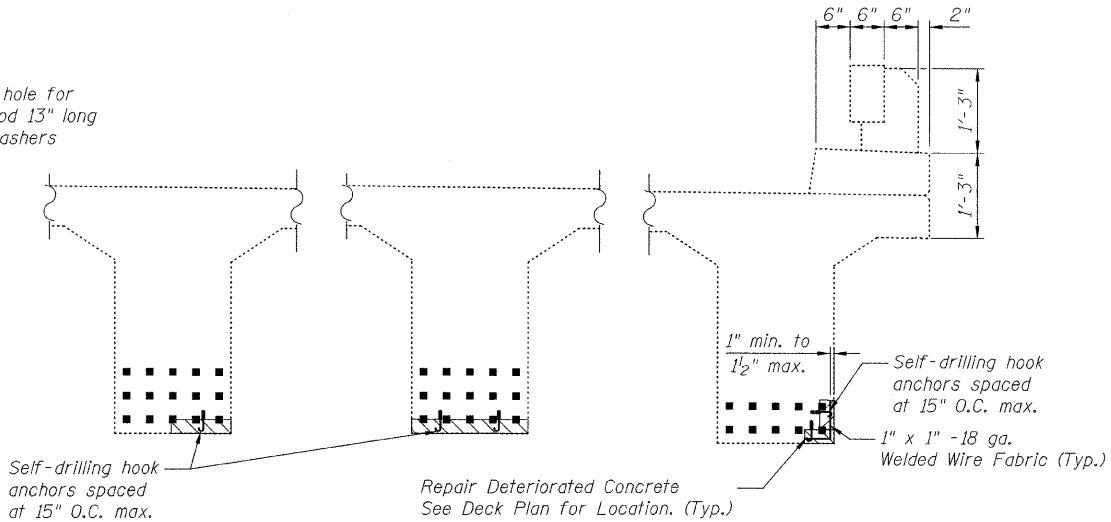


STATE OF ILLINOIS  
DEPARTMENT OF TRANSPORTATION



CROSS-SECTION



SECTION C-C

SECTION B-B

SECTION A-A

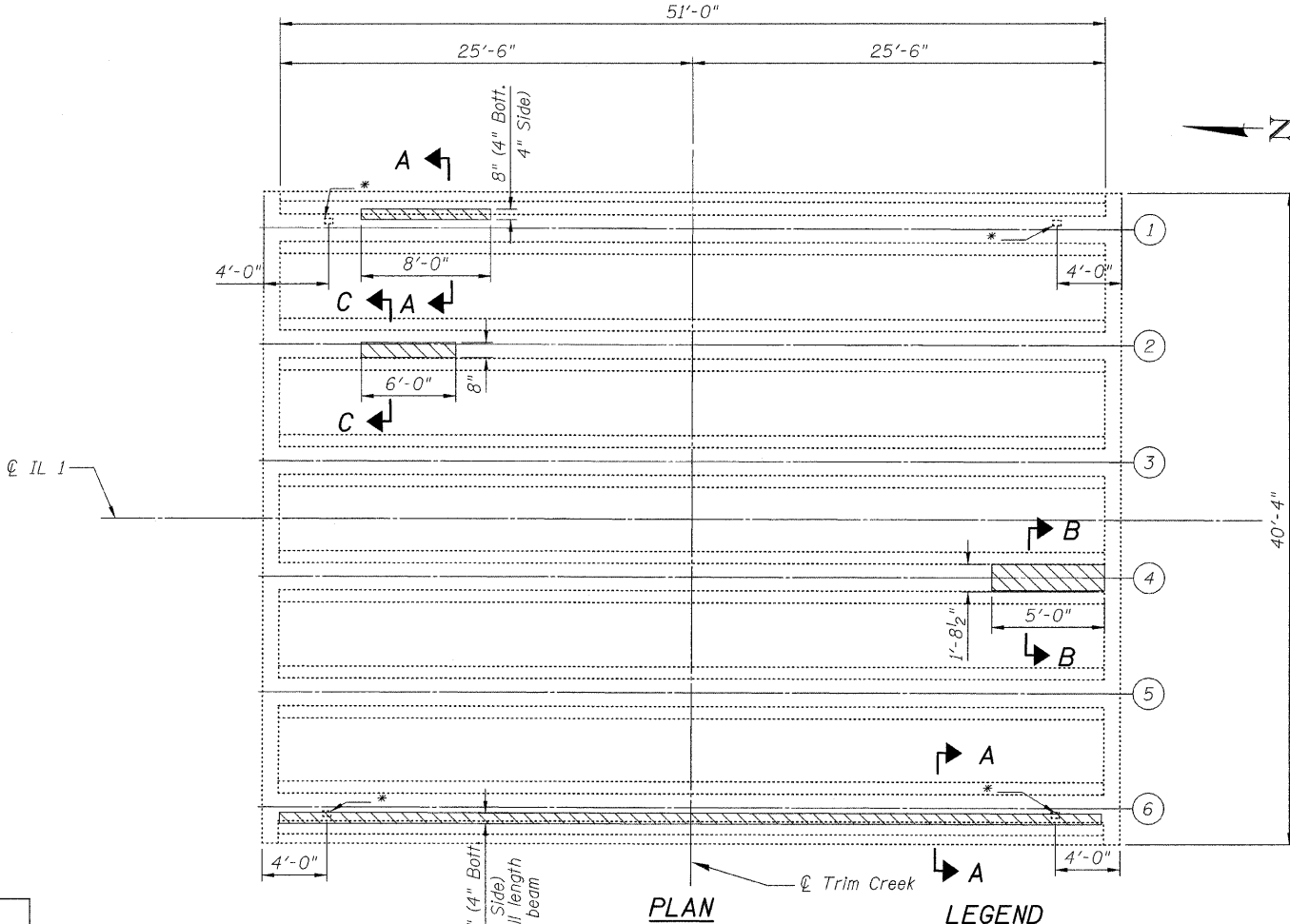
BEAM REPAIR

NOTES:

- Repairs shall include but not be limited to the areas shown. The actual areas to be determined by the Engineer at the time of construction.
- The repair concrete shall be securely anchored to the existing beam using self drilling anchors. Cost included with Structural Repair of Concrete (Depth Equal to or Less than 5 Inches).

BILL OF MATERIAL

ITEM	UNIT	QUANTITY
Structural Repair of Concrete (Depth Equal to or Less than 5 Inches)	Sq. Ft.	52
Plug Existing Drains	Each	4



PLAN

LEGEND

Concrete Beam to be Repaired

\* - Drain Pipe to be Eliminated

DESIGNED	B. Sauter
CHECKED	E. Mroczek
DRAWN	R. Danley
CHECKED	B. Sauter

**Ciorba Group, Inc.**  
CONSULTING ENGINEERS  
5507 North Cumberland Avenue, Suite 402 Chicago, Illinois 60656  
Tel. 773.775.4009 Fax 773.775.4014 Email chicago@ciorba.com

BEAM REPAIRS  
IL 1 OVER TRIM CREEK  
STA. 533+25  
S.N. 099-0079

SHEET NO. S5	F.A.P. RTE.	SECTION	COUNTY	TOTAL SHEETS	SHEET NO.
58 SHEETS	332	8 R-B-I-2	WILL	28	20
FED. ROAD DIST. NO.			ILLINOIS	FED. AID PROJECT	
			CONTRACT NO. 60D81		

1/13/2009 rdm\lej ns:\proj\3329\3329\_26\design\structural\cad\sh\3329\_26\_05\_Beam\_Repairs.sht