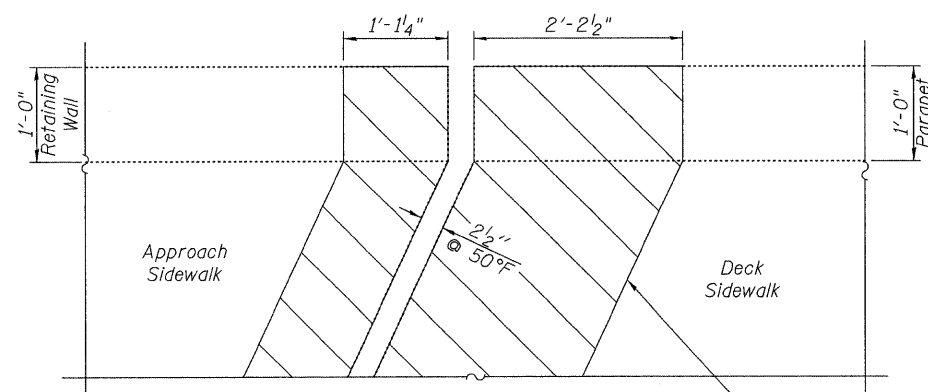
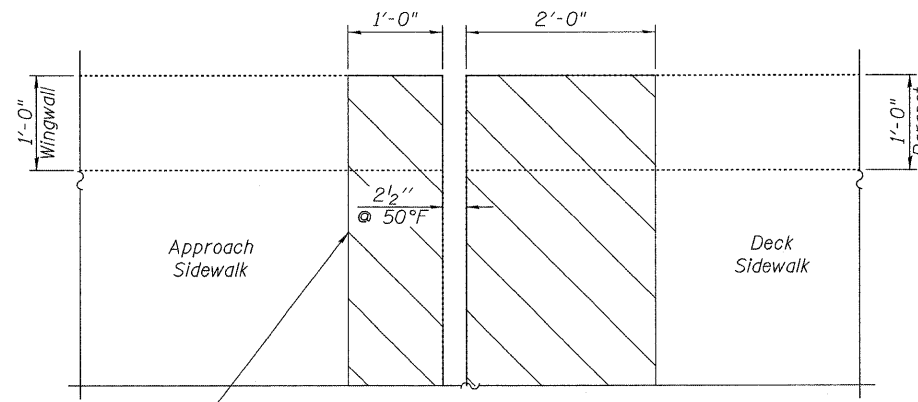


Contract # 60D74



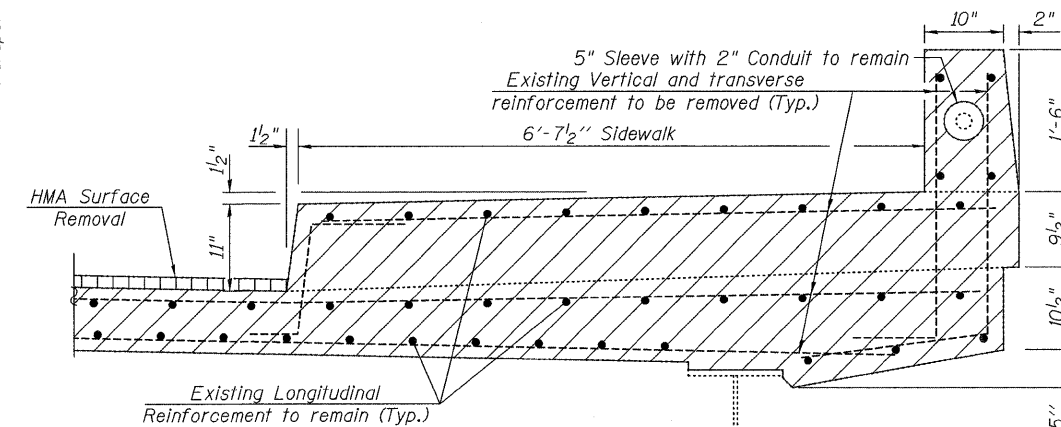
PLAN - CONCRETE REMOVAL

(West End of Deck Joint at S. Abut. shown, East End Similar)

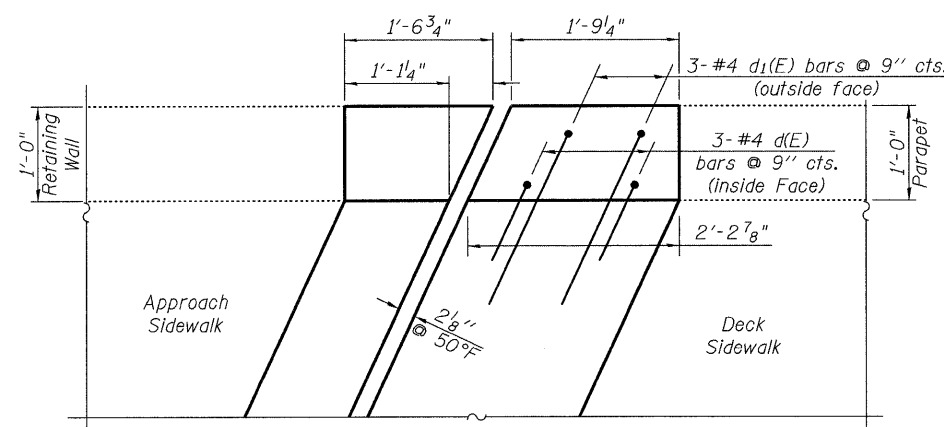


PLAN - CONCRETE REMOVAL

(East End of Deck Joint at N. Abut. shown, West End Similar)

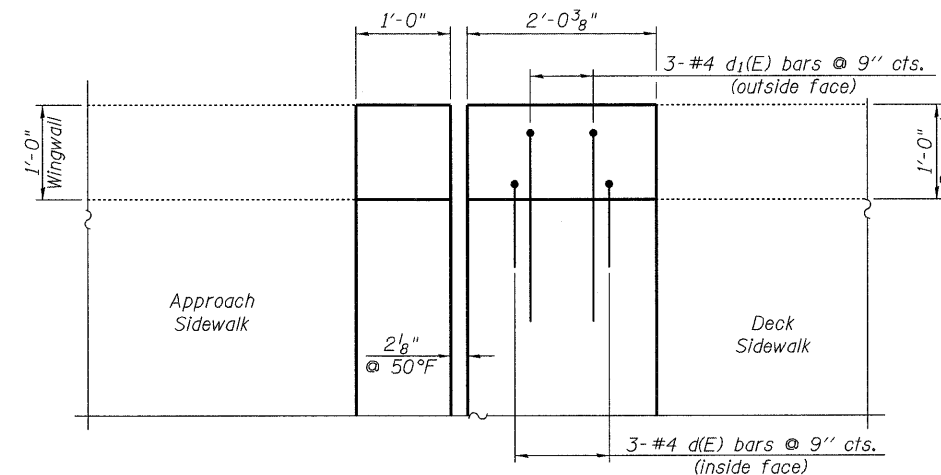


SECTION THRU SIDEWALK, PARAPET & SOFFIT-CONCRETE REMOVAL



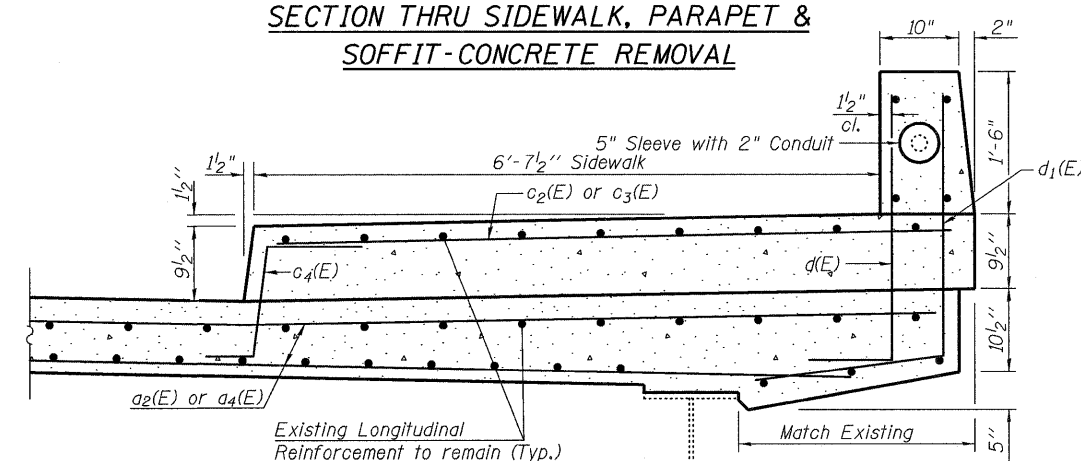
PLAN - CONCRETE REPLACEMENT

(West End of Deck Joint at S. Abut.)

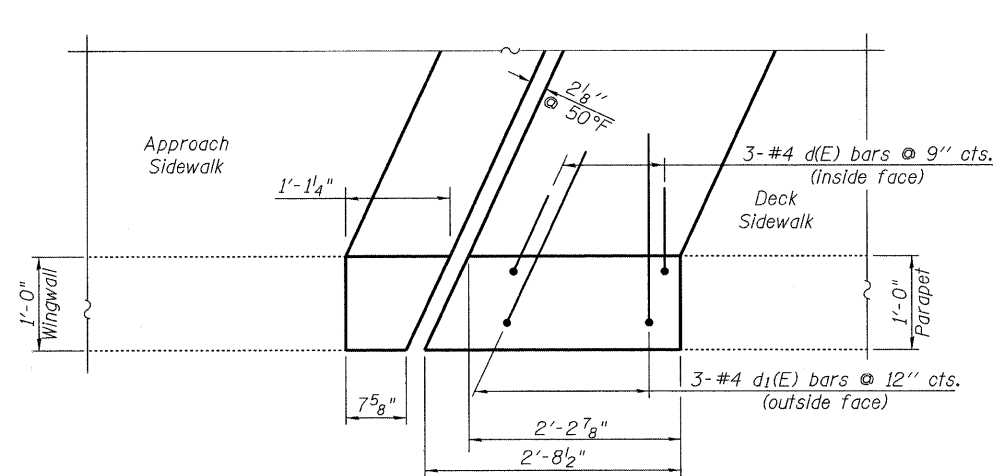


PLAN - CONCRETE REPLACEMENT

(East End of Deck Joint at N. Abut. shown, West End Similar)

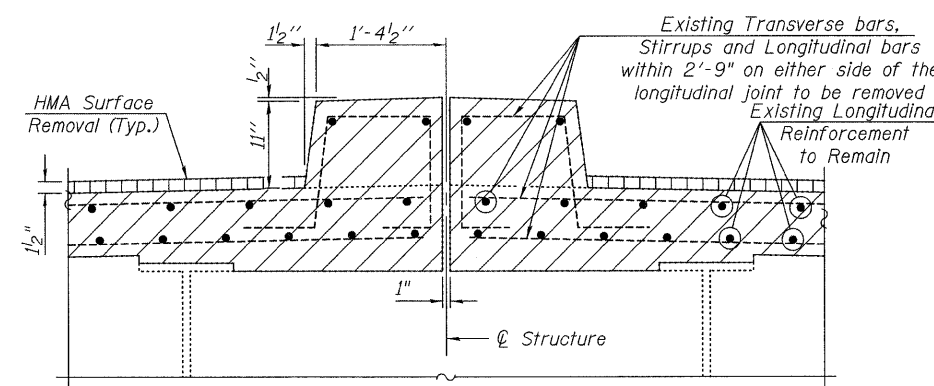


SECTION THRU SIDEWALK, PARAPET & SOFFIT-CONCRETE REPLACEMENT

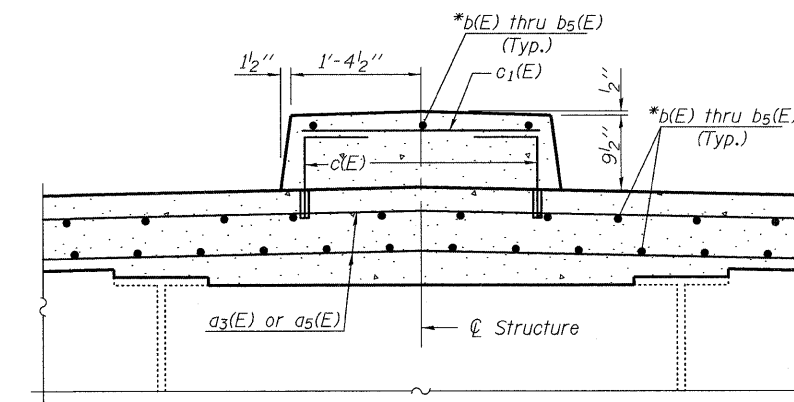


PLAN - CONCRETE REPLACEMENT

(East End of Deck Joint at S. Abut.)



SECTION THRU MEDIAN CONCRETE REMOVAL



SECTION THRU MEDIAN CONCRETE REPLACEMENT

* See sheet 20 of 35 for longitudinal reinforcement

NOTES:

See Sheet 18 of 35 for Median Reinforcement.
See Sheet 12 of 35 for Bill of Material and bar Details.
Hatched areas indicate concrete sections to be removed. Care shall be exercised by the contractor during and following Concrete Removal operations to ensure that the existing rebar remaining in place are not damaged. All existing reinforcement to be incorporated into new construction shall be blast-cleaned, straightened, and properly positioned prior to concrete placement. Any reinforcement damaged during Concrete Removal shall be repaired or replaced using an approved Bar Splicer or Mechanical System. Cost included with Concrete Removal.

For simplicity, only proposed reinforcement critical to parapet replacement is shown. Interference is expected from the existing aluminum rail posts. The Contractor shall remove and reerect the existing bridge rail and post to complete the work as detailed. The existing aluminum rail post shall be reconnected to the reconstructed parapet utilizing the existing mounting bracket. Care shall be taken not to damage the existing bracket. The base of the rail post shall be sealed with two component non-staining gray sealing compound with polysulfide liquid polymers-gun grade with primer. All labor, equipment, and materials necessary for removing and reinstalling the bridge rail and bridge rail post shall be included in the cost for Concrete Superstructure.

rjngroup

Excellence through Ownership

200 West Front Street
Wheaton, IL 60187

ILLINOIS DEPARTMENT OF TRANSPORTATION
EXPANSION JOINT REHABILITATION
DETAILS I
BURNHAM AVE OVER STATE ST, R.R. & RIVER
FAU RTE 2943 SECTION 1212.8-I-1
COOK COUNTY
STATION 231+79.04
STRUCTURE NO. 016-0806

DATE: 1-14-2009

DRAWN BY WJV
CHECKED BY BLB