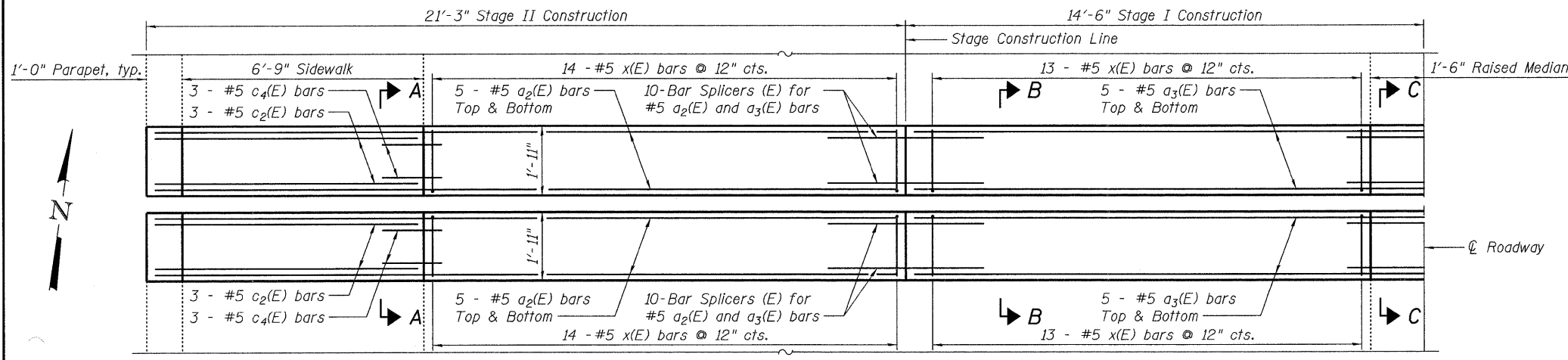
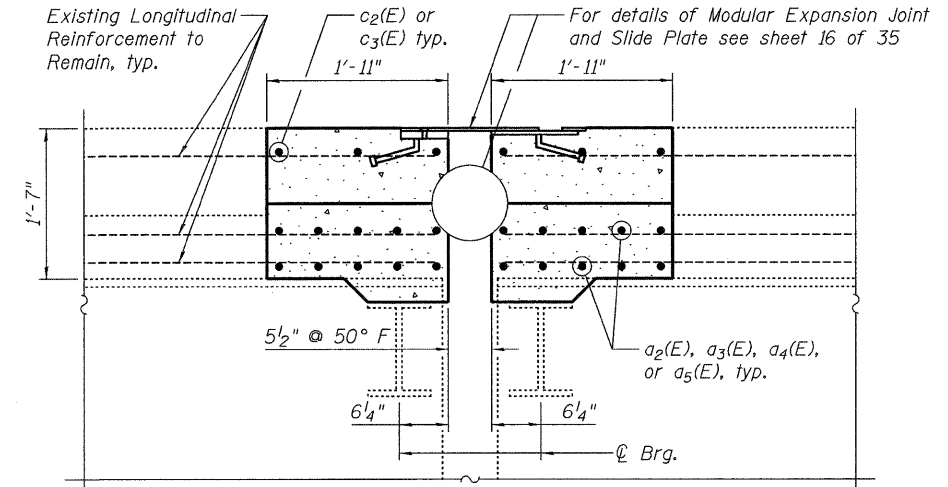


Contract # 60D74

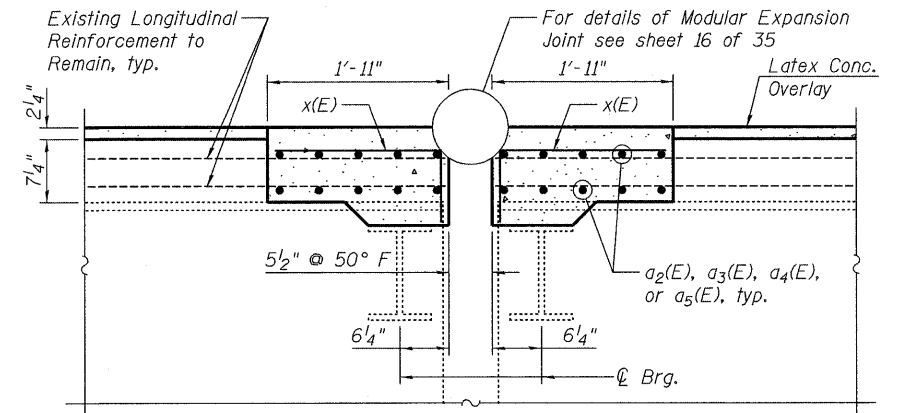


**JOINT CONSTRUCTION HALF PLAN AT PIER 24**  
(West half of Deck Joint over Pier 24 shown, other half similar)

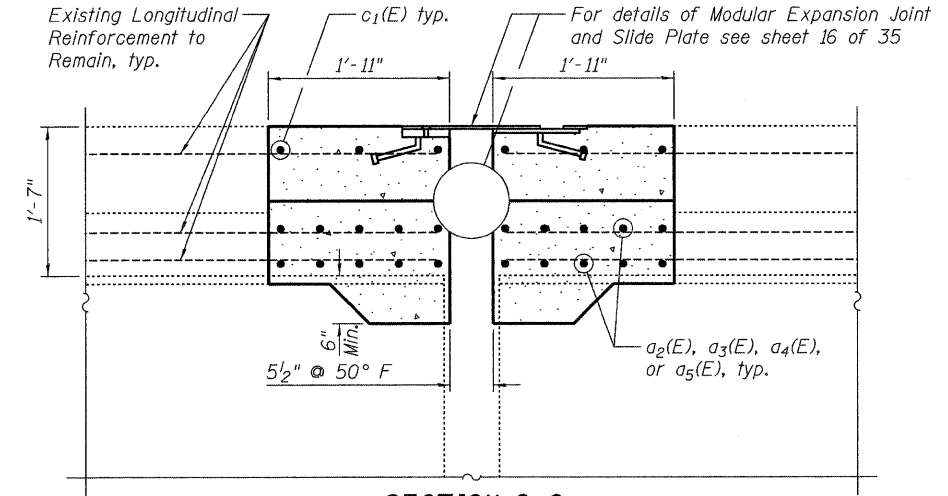
**NOTES:**  
Cut or move reinforcement as necessary at the approval of the Engineer to accommodate the Modular Joint hardware or existing Drainage Scuppers.  
See Sheet 12 of 35 for Bill of Material and Bar Details.  
See Sheet 18 of 35 for Median Reinforcement.  
See Sheet 1 and 2 of 35 for skew angle at joint.



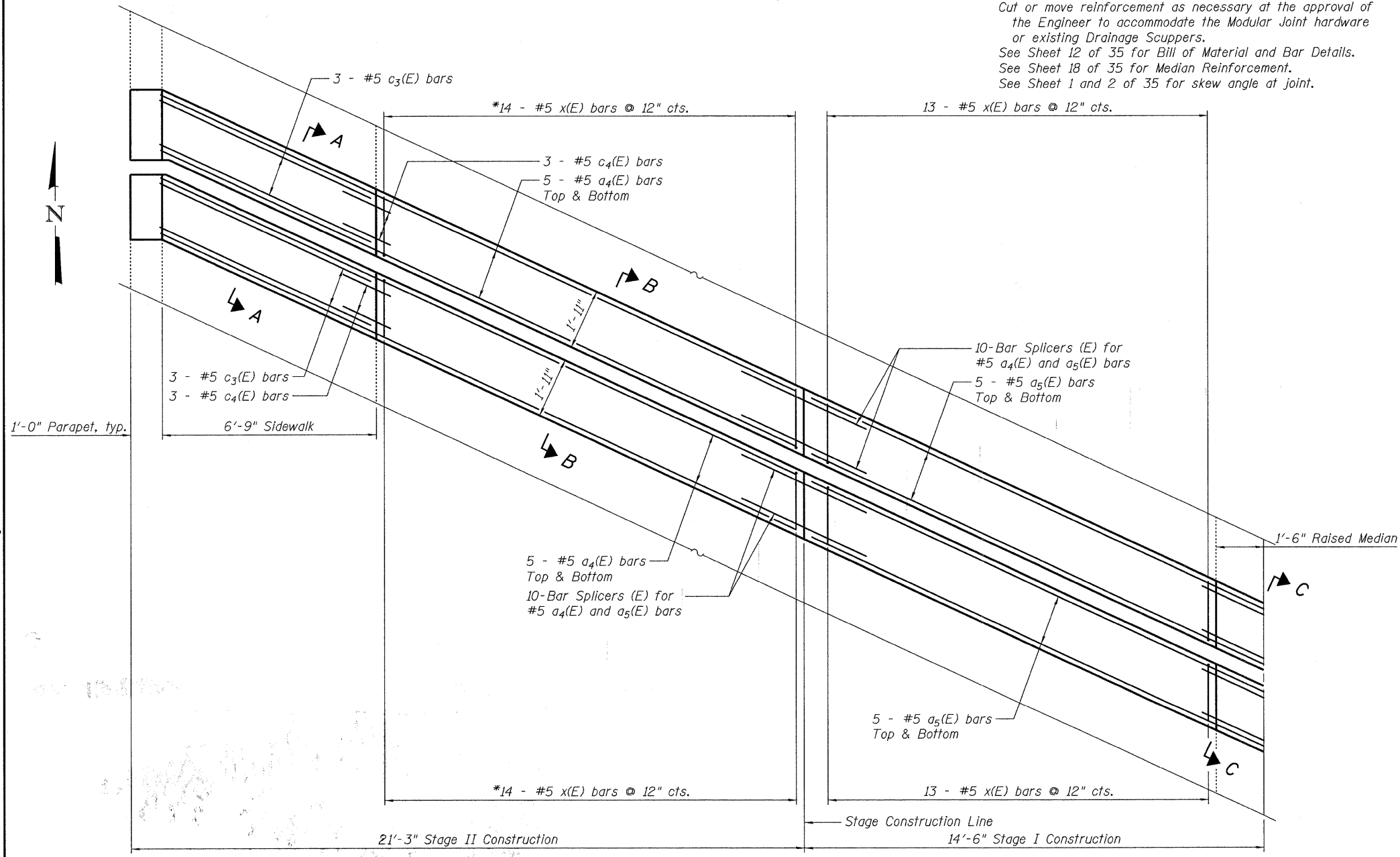
**SECTION A-A**



**SECTION B-B**



**SECTION C-C**



**JOINT CONSTRUCTION HALF PLAN AT PIERS 7, 11, AND 21**  
(West half of Deck Joint over Piers 7, 11, and 21 shown, other halves similar except at Pier 11 which has no Raised Median or East Sidewalk and Parapet)

\*21 - #5 x(E) bars @ 12" cts. at East half of Deck at Pier 11

**rjngroup**  
Excellence through Ownership  
200 West Front Street  
Wheaton, IL 60187

ILLINOIS DEPARTMENT OF TRANSPORTATION  
EXPANSION JOINT REPLACEMENT  
AT PIERS 7, 11, 21 & 24  
BURNHAM AVE OVER STATE ST, R.R. & RIVER  
FAU RTE 2943 SECTION 1212.8-I-1  
COOK COUNTY  
STATION 231+79.04  
STRUCTURE NO. 016-0806  
DATE: 1-14-2009  
DRAWN BY LCM  
CHECKED BY BLB

K:\112256803\Structures\Burnham Ave. Over R.R. & River\Final Plans\Mod\_Joints.dgn 1/13/2009