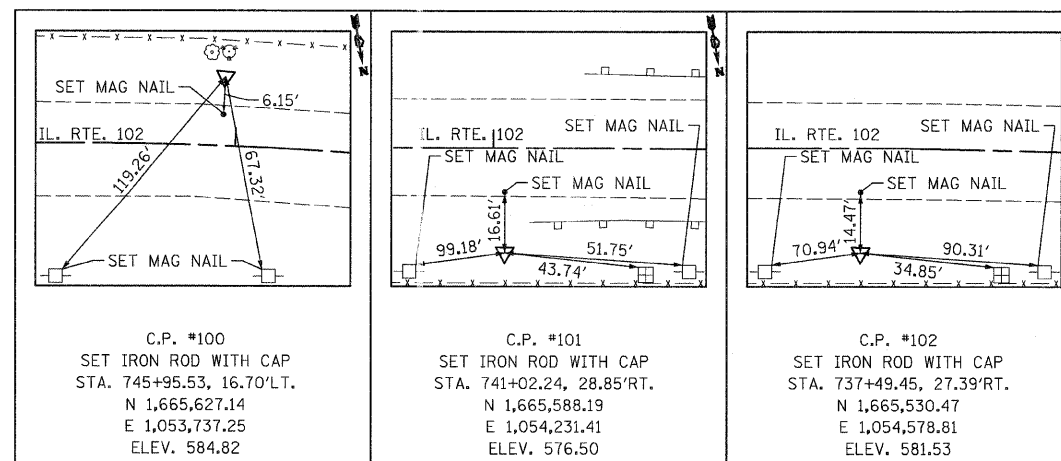


PAVEMENT MARKING NOTES:

1. ALL PAVEMENT MARKINGS ON BRIDGE DECK AND PAVEMENT SHALL BE POLYUREA, TYPE I.



CENTERLINE ALIGNMENT			
	NORTHING	EASTING	STATION
P. I.	1,665,504.09	1,054,569.63	737+54.92
P. I.	1,665,564.16	1,054,199.39	741+30.00
CL BRIDGE	1,665,581.05	1,054,100.83	742+30.00
P. C.	1,665,636.02	1,053,779.94	745+55.56
P. T.	1,665,766.08	1,053,419.55	749+40.70
P. I.	1,665,813.61	1,053,337.11	750+35.86

FILE NAME = 60D73 align pm.dgn
PLOT DATE = 1/12/2009

CHRISTIAN-ROGE & ASSOCIATES, INC.
ENGINEERS-PLANNERS-SURVEYORS
211 WEST WACKER DRIVE
CHICAGO, ILLINOIS 60606
PHONE: (312)372-2023 FAX: (312)372-5279

DESIGNED - S.J.P.
DRAWN - A.C.S.
CHECKED - E.J.M.
DATE - JANUARY 12, 2009

REVISED -
REVISED -
REVISED -
REVISED -

STATE OF ILLINOIS
DEPARTMENT OF TRANSPORTATION

ALIGNMENT, TIES AND PAVEMENT MARKINGS
IL. RTE. 102

SCALE: 1" = 50' SHEET NO. 1 OF 1 SHEETS STA. 741+40 TO STA. 743+20

F.A.P. RTE.	SECTION	COUNTY	TOTAL SHEETS	SHEET NO.
631	111 N-B-I	WILL	20	5
CONTRACT NO. 60D73				
FED. ROAD DIST. NO. 1 ILLINOIS FED. AID PROJECT				