

F.A.P. RTE.	SECTION	COUNTY	TOTAL SHEETS	SHEET NO.
330	105 B-3-1	WILL	18	1
FED. ROAD DIST. NO. 1	ILLINOIS	CONTRACT NO. 60D67		

STATE OF ILLINOIS
DEPARTMENT OF TRANSPORTATION
DIVISION OF HIGHWAYS

**PROPOSED
HIGHWAY PLANS**

F.A.P. 330 / U.S. 45
SECTION: 105 B-3-1

OVER FORKED CREEK (2.1 MI S OF MANHATTAN MONEE RD.)
BRIDGE DECK OVERLAY
PROJECT: *ESP-0330(050)*
WILL COUNTY
C-91-085-08

FOR INDEX OF SHEETS, SEE SHEET NO. 2

DESIGN DESIGNATION:

POSTED SPEED: 55 M.P.H.

2005 ADT = 6,200

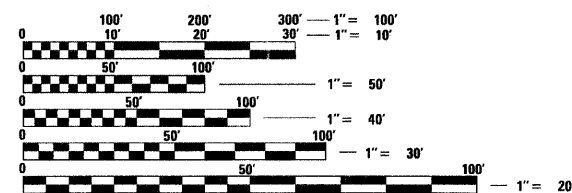
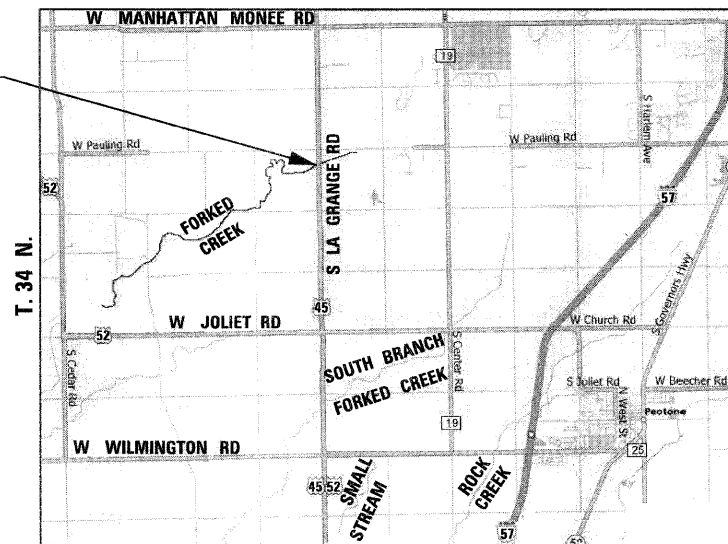
PROJECT LOCATED IN
UNINCORPORATED WILL COUNTY

D-91-085-08



GREEN GARDEN TOWNSHIP
R. 12 E.

PROJECT LOCATION:
U.S. 45
OVER FORKED CREEK
S.N. 099-0243



FULL SIZE PLANS HAVE BEEN PREPARED USING STANDARD ENGINEERING SCALES. REDUCED SIZED PLANS WILL NOT CONFORM TO STANDARD SCALES. IN MAKING MEASUREMENTS ON REDUCED PLANS, THE ABOVE SCALES MAY BE USED.

J.U.L.I.E.
JOINT UTILITY LOCATING INFORMATION FOR EXCAVATORS
1-800-892-0123
OR 811

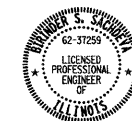
GROSS LENGTH OF PROJECT = 215.00 FEET = 0.041 MILES
NET LENGTH OF PROJECT = 215.00 FEET = 0.041 MILES

STATE OF ILLINOIS
DEPARTMENT OF TRANSPORTATION
DIVISION OF HIGHWAYS

SUBMITTED JANUARY 8, 2009
Diana M. O'Keefe
DEPUTY DIRECTOR OF HIGHWAYS, REGION ONE ENGINEER

March 13, 2009
Charles G. Ingersoll
ENGINEER OF DESIGN AND ENVIRONMENT

March 13, 2009
Christine M. Reed
DIRECTOR OF HIGHWAYS, CHIEF ENGINEER



Brinder S. Sachdeva January 06, 2009
BRINDER S. SACHDEVA, P.E. DATE
EXPIRES: 11-30-2009



Bhadresh N. Shah JAN. 06, 2009
BHADRESH N. SHAH, S.E., P.E. DATE
EXPIRES: 11-30-2010

DISTRICT ONE - DESIGN PROJECT MANAGER: ISAAC KWARTENG (847) 705-4230

CONTRACT NO. 60D67



CHRISTIAN-ROGE & ASSOCIATES, INC.
ENGINEERS - PLANNERS - SURVEYORS
211 W. WACKER DRIVE CHICAGO, IL 60606
TELEPHONE: 312-372-2023

PRINTED BY THE AUTHORITY
OF THE STATE OF ILLINOIS

INDEX OF SHEETS

1	COVER SHEET
2	INDEX OF SHEETS, LIST OF STATE STANDARDS AND GENERAL NOTES U.S. 45
3	SUMMARY OF QUANTITIES U.S. 45
4	TYPICAL SECTIONS AND DETAILS U.S. 45
5	ALIGNMENT, TIES AND PAVEMENT MARKINGS U.S. 45
6	EXISTING CONDITIONS AND PROPOSED PLAN AND PROFILE U.S. 45
7	SUGGESTED MAINTENANCE OF TRAFFIC NOTES AND DETAILS U.S. 45
8	SUGGESTED TRAFFIC CONTROL AND STAGING PLAN U.S. 45
9 - 10	TEMPORARY LIGHTING PLANS U.S. 45
11 - 13	STRUCTURAL DRAWINGS - U.S. 45 OVER FORKED CREEK
14	BUTT JOINT AND HMA TAPER DETAILS
15	TEMPORARY LIGHT POLE DETAILS
16	TEMPORARY AERIAL CABLE INSTALLATION
17	TYPICAL APPLICATIONS RAISED REFLECTIVE PAVEMENT MARKERS (SNOW-PLOW RESISTANT)
18	DISTRICT ONE TYPICAL PAVEMENT MARKINGS

LIST OF STATE STANDARDS

STANDARD NO.	DESCRIPTION
000001-05	STANDARD SYMBOLS, ABBREVIATIONS AND PATTERNS
701201-03	LANE CLOSURE, 2L, 2W, DAY ONLY, FOR SPEEDS > 45 MPH
701316-04	LANE CLOSURE, 2L, 2W, BRIDGE REPAIR, FOR SPEEDS > 45 MPH
701901-01	TRAFFIC CONTROL DEVICES
780001-02	TYPICAL PAVEMENT MARKINGS
880001-01	SPAN WIRE MOUNTED SIGNALS AND FLASHING BEACON INSTALLATION

GENERAL NOTES

1. THESE PLANS HAVE BEEN PREPARED FROM NOTES RECEIVED FROM IDOT FIELD MAINTENANCE ENGINEERS.
2. PLAN DIMENSIONS AND DETAILS RELATIVE TO EXISTING PLANS ARE SUBJECT TO ROUTINE VARIATIONS. THE CONTRACTOR SHALL FIELD VERIFY EXISTING DIMENSIONS AND DETAILS AFFECTING NEW CONSTRUCTION AND MAKE NECESSARY APPROVED ADJUSTMENTS PRIOR TO CONSTRUCTION OR ORDERING MATERIALS. SUCH VARIATIONS SHALL NOT BE CAUSE FOR ADDITIONAL COMPENSATION FOR A CHANGE IN THE SCOPE OF THE WORK, HOWEVER, THE CONTRACTOR WILL BE PAID FOR THE QUANTITY ACTUALLY FURNISHED BASED UPON THE UNIT PRICE.
3. FORTY-EIGHT HOURS BEFORE STARTING EXCAVATION, THE CONTRACTOR WILL CALL J.U.L.I.E. (1-800-892-0123) OR 811 TO HAVE THE LOCATION OF EXISTING UTILITIES STAKED.
4. THE CONTRACTOR WILL NOT BE ALLOWED TO SET UP A YARD OR FIELD OFFICE ON STATE PROPERTY WITHOUT WRITTEN PERMISSION FROM THE DEPARTMENT.
5. SAW CUTTING PRIOR TO ANY REMOVAL ITEMS NOTED ON THE PLANS OR DIRECTED BY THE ENGINEER SHALL BE CONSIDERED INCLUDED IN THE COST OF THE ITEMS BEING REMOVED.
6. DO NOT SCALE PLANS FOR CONSTRUCTION DIMENSIONS.
7. THE CONTRACTOR SHALL USE CARE IN REMOVING OR EXCAVATING NEAR ALL EXISTING ITEMS WHICH WILL REMAIN. ANY DAMAGE DONE TO EXISTING ITEMS BY THE CONTRACTOR SHALL BE REPAIRED AT THE CONTRACTOR'S EXPENSE.
8. WHEN ARTIFICIAL LIGHTING IS UTILIZED IN NIGHT OPERATIONS, THE CONTRACTOR SHALL EXERCISE THE UTMOST PRECAUTIONS IN PREVENTING ADVERSE VISIBILITY TO THE MOTORING PUBLIC AS WELL AS ADJOINING RESIDENTIAL AREAS.
9. THE CONTRACTOR SHALL OBTAIN ALL NECESSARY PERMITS, AS REQUIRED, PRIOR TO COMMENCING WITH CONSTRUCTION.
10. THE CONTRACTOR SHALL TAKE ALL NECESSARY MEASURES TO ASSURE THAT NO DEBRIS FALLS IN THE CREEK. THE COST OF THIS WORK SHALL BE INCLUDED IN THE VARIOUS PAY ITEMS.
11. THE CONTRACTOR SHALL CONTACT THE TRAFFIC CONTROL SUPERVISOR AT (847) 705-4470 A MINIMUM OF 72 HOURS PRIOR TO THE PLACEMENT OF ANY TEMPORARY TRAFFIC CONTROL DEVICES.
12. THE CONTRACTOR SHALL CONTACT CORA MATHIS, THE AREA TRAFFIC FIELD ENGINEER, AT (815) 485-6475 TWO (2) WEEKS PRIOR TO THE PLACEMENT OF PERMANENT PAVEMENT MARKINGS.
13. ALL DAMAGE TO EXISTING PAVEMENT MARKINGS OUTSIDE THE REMOVAL LINE SHOWN ON THE PLANS SHALL BE REPLACED AT THE CONTRACTOR'S EXPENSE.

NOTE: BOXED ITEMS ARE INCLUDED IN THE COST OF THE WORK INVOLVED.

FILE NAME = D16067-sht-gennote.dgn
PLOT DATE = 1/12/2009



DESIGNED - S.J.P.	REVISED -
DRAWN - A.C.S.	REVISED -
CHECKED - E.J.M.	REVISED -
DATE - JANUARY 12, 2009	REVISED -

**STATE OF ILLINOIS
DEPARTMENT OF TRANSPORTATION**

**INDEX OF SHEETS, LIST OF STATE STANDARDS AND GENERAL NOTES
U.S. 45**

SCALE: NONE SHEET NO. 1 OF 1 SHEETS STA. TO STA.

F.A.P. RTE.	SECTION	COUNTY	TOTAL SHEETS	SHEET NO.
330	105 B-3-1	WILL	18	2
CONTRACT NO. 60D67			FED. ROAD DIST. NO. 1 ILLINOIS FED. AID PROJECT	

SUMMARY OF QUANTITIES			100% FED. URBAN	CONSTRUCTION TYPE CODE
CODE NO	ITEM	UNIT	TOTAL QUANTITIES	U.S. 45 BRIDGE SFTY-2A
40300200	BITUMINOUS MATERIALS (PRIME COAT)	TON	1	1
40600300	AGGREGATE (PRIME COAT)	TON	1	1
40600982	HOT-MIX ASPHALT SURFACE REMOVAL - BUTT JOINT	SQ YD	44	44
40603335	HOT-MIX ASPHALT SURFACE COURSE, MIX "D", N50	TON	50	50
42001300	PROTECTIVE COAT	SQ YD	449	449
44000155	HOT-MIX ASPHALT SURFACE REMOVAL, 1 1/2"	SQ YD	585	585
44000086	HOT-MIX ASPHALT SURFACE REMOVAL COMPLETE	SQ YD	449	449
50300260	BRIDGE DECK GROOVING	SQ YD	428	428
67000400	ENGINEER'S FIELD OFFICE, TYPE A	CAL MO	3	3
67100100	MOBILIZATION	L SUM	1	1
70101800	TRAFFIC CONTROL AND PROTECTION, (SPECIAL)	L SUM	1	1
70106700	TEMPORARY RUMBLE STRIP	EACH	6	6
* 78008210	POLYUREA PAVEMENT MARKING TYPE I - LINE 4"	FOOT	600	600
* 78100100	RAISED REFLECTIVE PAVEMENT MARKER	EACH	3	3
* 78100105	RAISED REFLECTIVE PAVEMENT MARKER (BRIDGE)	EACH	1	1
78300100	PAVEMENT MARKING REMOVAL	SQ FT	40	40
78300200	RAISED REFLECTIVE PAVEMENT MARKER REMOVAL	EACH	4	4

* SPECIALTY ITEM

SUMMARY OF QUANTITIES			100% FED. URBAN	CONSTRUCTION TYPE CODE
CODE NO	ITEM	UNIT	TOTAL QUANTITIES	U.S. 45 BRIDGE SFTY-2A
80400100	ELECTRIC SERVICE INSTALLATION	EACH	1	1
80400200	ELECTRIC UTILITY SERVICE CONNECTION	L SUM	1	1
* 81800320	AERIAL CABLE, 3-1/C NO. 4 WITH MESSENGER WIRE	FOOT	1,060	1,060
* 82103400	LUMINAIRE, SODIUM VAPOR, HORIZONTAL MOUNT, PHOTO-CELL CONTROL, 400 WATT	EACH	6	6
* 83057355	LIGHT POLE, WOOD, 60 FOOT, CLASS 4, WITH 15 FT MAST ARM	EACH	6	6
84100110	REMOVAL OF TEMPORARY LIGHTING UNITS	EACH	6	6
X0322185	BRIDGE DECK LATEX CONCRETE OVERLAY, 2 1/4 INCHES	SQ YD	449	449
X0322467	TEMPORARY INFORMATION SIGNING FOR LANE CLOSURE	SQ FT	48	48
X0323574	MAINTENANCE OF LIGHTING SYSTEM	CAL MO	4	4
X0325775	WET REFLECTIVE TEMPORARY TAPE, TYPE III, 4 INCH	FOOT	1,600	1,600
* X0325867	COMBINATION POLE MOUNTED ELECTRIC SERVICE BOX	EACH	1	1
X8900005	TEMPORARY BRIDGE TRAFFIC SIGNAL INSTALLATION	EACH	1	1
* XX006937	GROUND ROD, 5/8" DIA. x 10 FT.	EACH	1	1
Z0006204	BRIDGE DECK HYDRO-SCARIFICATION, 1/2"	SQ YD	449	449
Z0013798	CONSTRUCTION LAYOUT	L SUM	1	1
Z0016002	DECK SLAB REPAIR (FULL DEPTH, TYPE II)	SQ YD	35	35
* X0326135	ELECTRIC SERVICE DISCONNECT, LIGHTING AND TRAFFIC SIGNAL	EACH	1	1

* SPECIALTY ITEM

FILE NAME = D16067-sht-500.dgn
PLOT DATE = 1/12/2009



DESIGNED - S.J.P.
DRAWN - A.C.S.
CHECKED - E.J.M.
DATE - JANUARY 12, 2009

REVISED -
REVISED -
REVISED -
REVISED -

STATE OF ILLINOIS
DEPARTMENT OF TRANSPORTATION

SUMMARY OF QUANTITIES
U.S. 45

SCALE: NONE SHEET NO. 1 OF 1 SHEETS STA. 446+29 TO STA. 461+23

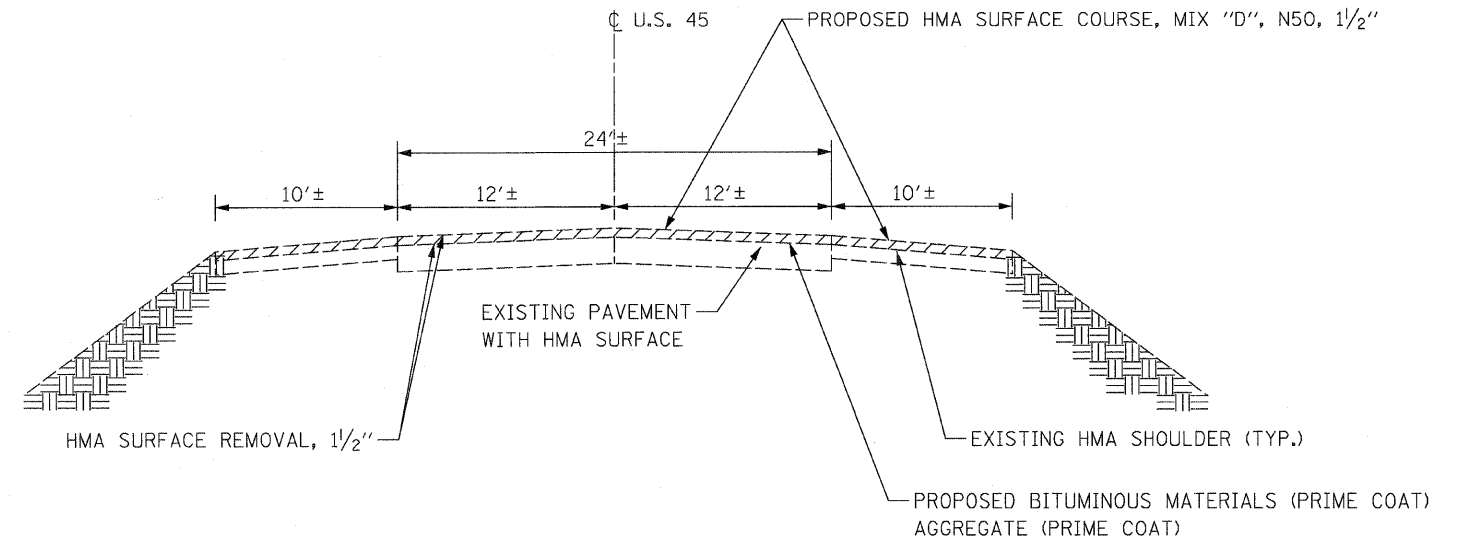
F.A.P. RTE.	SECTION	COUNTY	TOTAL SHEETS	SHEET NO.
330	105 B-3-I	WILL	18	3
CONTRACT NO. 60D67			FED. ROAD DIST. NO. ILLINOIS FED. AID PROJECT	

HOT-MIX ASPHALT MIXTURE REQUIREMENTS		
MIXTURE TYPE	AC TYPE	AIR VOIDS
PAVEMENT RESURFACING		
HOT-MIX ASPHALT SURFACE COURSE, MIX "D", N50 (IL 9.5 mm)	PG 64-22	4% @ 50 Gyr.

THE UNIT WEIGHT USED TO CALCULATE ALL HMA MIXTURE QUANTITIES IS 112 LBS/SQ YD/IN.

NOTES:

- EXISTING PAVEMENT TO BE OVERLAID WILL BE CLEANED AND PRIMED PER ARTICLE 407.06 OF THE 2007 STANDARD SPECIFICATIONS.
- SEE SHEET NO. 14 - BUTT JOINT AND HMA TAPER DETAILS (BD-32) FOR ADDITIONAL NOTES AND DETAILS.



EXISTING & PROPOSED TYPICAL SECTION

STA. 453+00 TO STA. 453+62.5
 STA. 454+57.5 TO STA. 455+15
 (BRIDGE OMISSION STA. 453+62.5 TO 454+57.5)

FILE NAME = D160067-sht-typical.dgn
 PLOT DATE = 1/12/2009



DESIGNED - S.J.P.	REVISED -
DRAWN - A.C.S.	REVISED -
CHECKED - E.J.M.	REVISED -
DATE - JANUARY 12, 2009	REVISED -

**STATE OF ILLINOIS
 DEPARTMENT OF TRANSPORTATION**

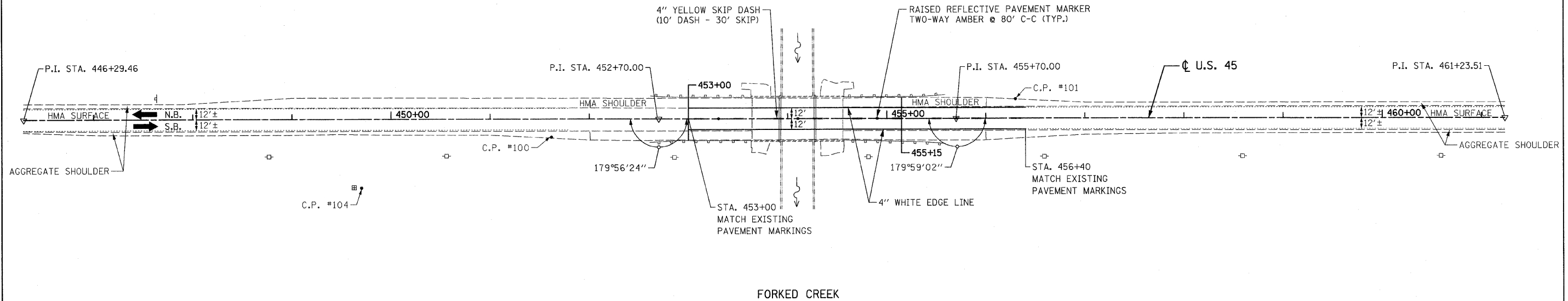
**TYPICAL SECTIONS & DETAILS
 U.S. 45**

SCALE: NONE SHEET NO. 1 OF 1 SHEETS STA. 452+50 TO STA. 455+15

F.A.P. RTE.	SECTION	COUNTY	TOTAL SHEETS	SHEET NO.
330	105 B-3-I	WILL	18	4
FED. ROAD DIST. NO. 1 ILLINOIS FED. AID PROJECT				CONTRACT NO. 60667

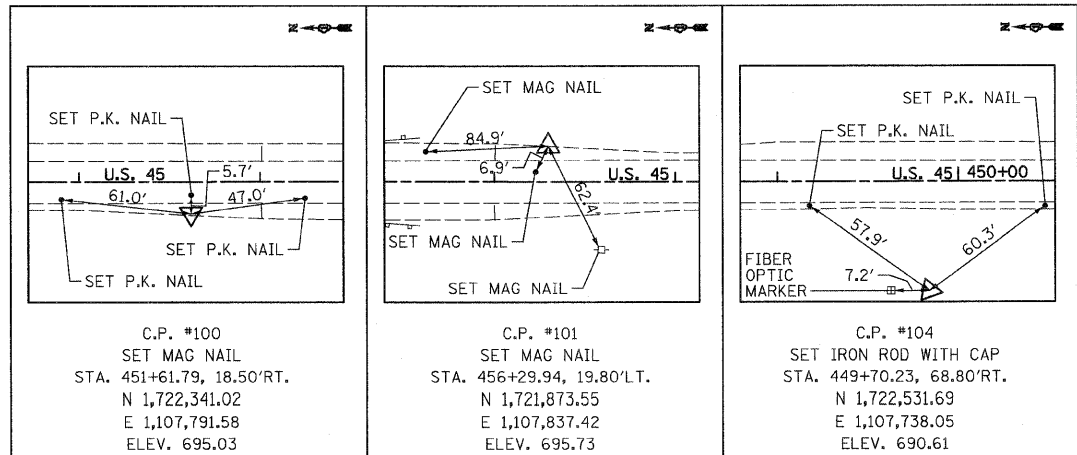


WILL COUNTY

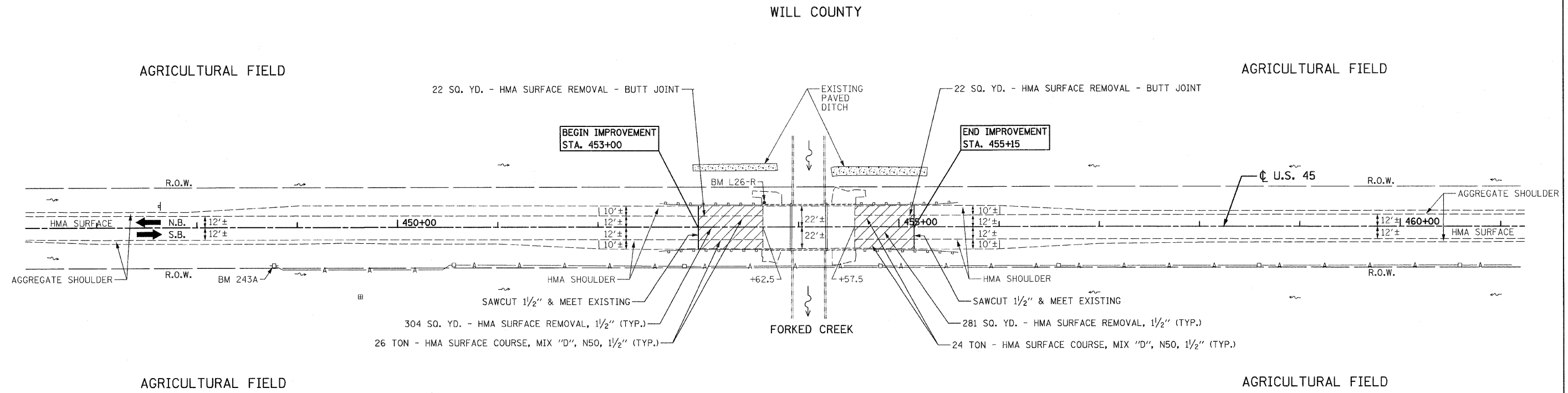


FORKED CREEK

PAVEMENT MARKING NOTES:
 1. ALL PAVEMENT MARKINGS ON BRIDGE DECK AND PAVEMENT SHALL BE POLYUREA, TYPE I.



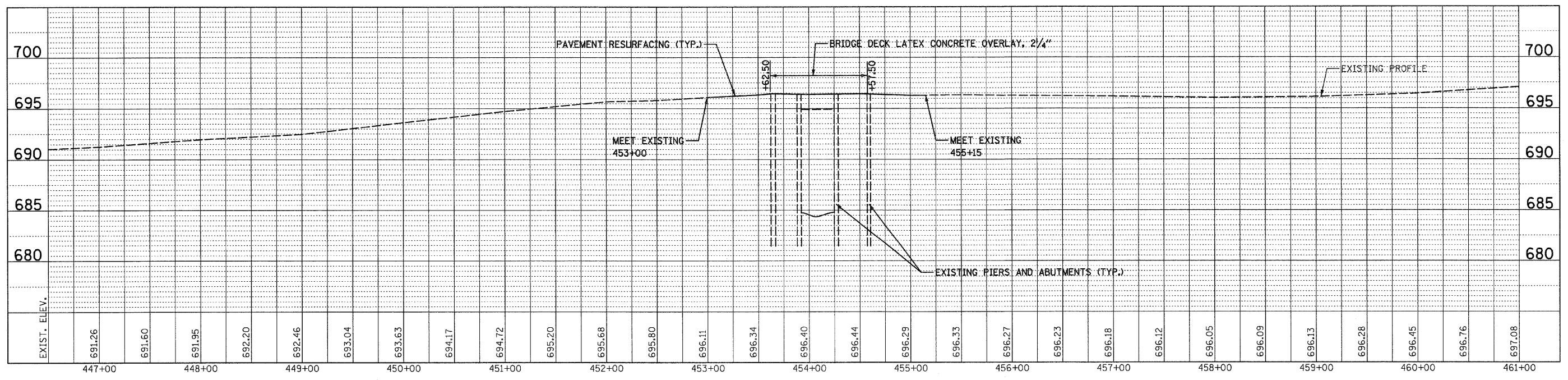
CENTERLINE ALIGNMENT			
	NORTHING	EASTING	STATION
P. I.	1, 721, 379. 72	1, 107, 825. 33	446+29. 46
P. I.	1, 721, 984. 90	1, 107, 815. 46	452+70. 00
☉ BRIDGE	1, 722, 093. 15	1, 107, 814. 15	454+10. 00
P. I.	1, 722, 181. 85	1, 107, 812. 09	455+70. 00
P. I.	1, 722, 873. 58	1, 107, 801. 06	461+23. 51



EXISTING CONDITIONS & PROPOSED PLAN

BM 243A ELEV. 690.758
RAILROAD SPIKE IN POWER POLE
STA. 448+76.82, 36.83' RT.

BM L26-R ELEV. 695.975
BRONZE TABLET STAMPED
"RESET 1975" ON N. E. WINGWALL
STA. 453+63.58, 23.34' LT



FILE NAME = D:\68067-sh1-p\inpf.dgn PLOT DATE = 1/12/2009	CHRISTIAN-ROHE & ASSOCIATES, INC. ENGINEERS-PLANNERS-SURVEYORS 211 WEST WACKER DRIVE CHICAGO, ILLINOIS 60606 PHONE: (312)372-2023 FAX: (312)372-5274	DESIGNED - S.J.P. DRAWN - A.C.S. CHECKED - E.J.M. DATE - JANUARY 12, 2009	REVISED - REVISED - REVISED - REVISED -	STATE OF ILLINOIS DEPARTMENT OF TRANSPORTATION	EXISTING CONDITIONS AND PROPOSED PLAN AND PROFILE U.S. 45 SCALE: 1" = 50' SHEET NO. 1 OF 1 SHEETS STA. 446+29 TO STA. 461+23	F.A.P. RTE. 330 SECTION 105 B-3-I COUNTY WILL TOTAL SHEETS 18 SHEET NO. 6 CONTRACT NO. 60D67 <small>FED. ROAD DIST. NO. 1 ILLINOIS FED. AID PROJECT</small>
--	---	--	--	---	--	---

SUGGESTED STAGING AND MAINTENANCE OF TRAFFIC

CONSTRUCTION STAGING

STAGE I (SOUTHBOUND LANE CONSTRUCTION)

- REMOVE HMA WEARING SURFACE ON SOUTHBOUND HALF OF BRIDGE AND PLACE PROPOSED BRIDGE DECK LATEX CONCRETE OVERLAY.

STAGE II (NORTHBOUND LANE CONSTRUCTION)

- REMOVE HMA WEARING ON NORTHBOUND HALF OF BRIDGE AND PLACE PROPOSED BRIDGE DECK LATEX CONCRETE OVERLAY.
- RESURFACE BOTH LANES OF PAVEMENT.

MAINTENANCE OF TRAFFIC

STAGE I

- INSTALL TEMPORARY BRIDGE TRAFFIC SIGNALS AND TEMPORARY LIGHTING.
USE DAILY LANE CLOSURES, SEE IDOT STANDARD 701201 - LANE CLOSURE, 2L, 2W, DAY ONLY, FOR SPEEDS > 45 MPH.
- CLOSE SOUTHBOUND LANE AND MAINTAIN ONE-LANE TWO-WAY TRAFFIC ON NORTHBOUND PAVEMENT ACROSS BRIDGE AS SHOWN ON THE SUGGESTED MAINTENANCE OF TRAFFIC AND STAGING PLAN AND IDOT STANDARD 701316.

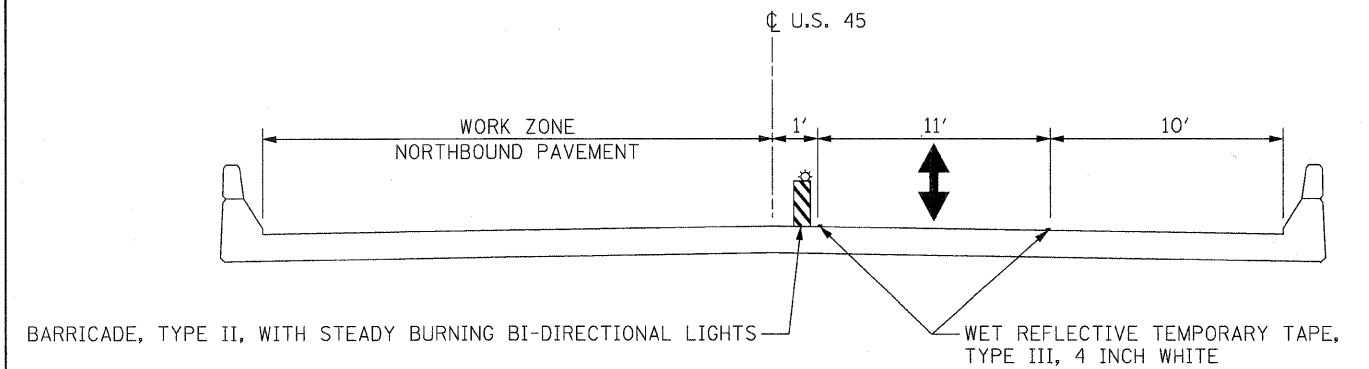
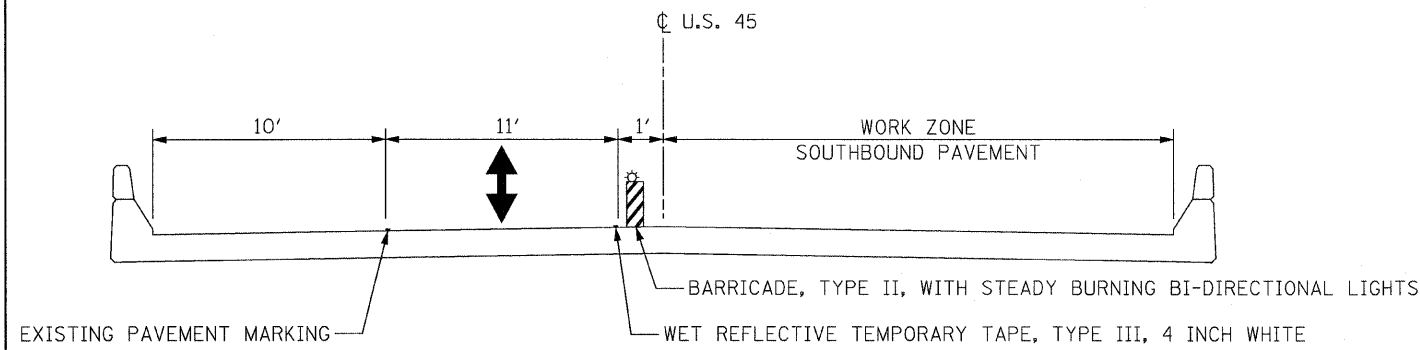
STAGE II

- SHIFT ONE-LANE TWO-WAY TRAFFIC TO SOUTHBOUND PAVEMENT ACROSS BRIDGE AS SHOWN ON THE SUGGESTED MAINTENANCE OF TRAFFIC AND STAGING PLAN AND IDOT STANDARD 701316.
- REMOVE TEMPORARY BRIDGE TRAFFIC SIGNALS AND USE DAILY LANE CLOSURES TO RESURFACE THE PAVEMENT ADJACENT TO THE BRIDGE.
SEE IDOT STANDARD 701201 - LANE CLOSURE, 2L, 2W, DAY ONLY, FOR SPEEDS > 45 MPH.

TRAFFIC CONTROL GENERAL NOTES

TRAFFIC CONTROL GENERAL NOTES

1. THE CONTRACTOR SHALL NOT MOUNT SIGNS ON EXISTING SIGNS.
2. FLUORESCENT VESTS: ALL CONSTRUCTION PERSONNEL WILL BE REQUIRED TO WEAR FLUORESCENT VESTS AT ALL TIMES WHILE ON THE CONSTRUCTION SITE. COMPLIANCE WITH THIS REQUIREMENT SHALL BE CONSIDERED INCIDENTAL TO THE CONTRACT.
3. CONTRACTOR SHALL MAINTAIN SATISFACTORY INGRESS AND EGRESS TO ADJACENT PROPERTIES THROUGHOUT THE CONSTRUCTION.
4. INSTALL TEMPORARY SIGN PANEL ASSEMBLY AS SHOWN IN PLANS AND AS DIRECTED BY THE ENGINEER. TO BE PAID FOR BY ITEM "TEMPORARY INFORMATION SIGNING FOR LANE CLOSURE".
5. EACH DETECTOR LOOP SHALL BE CONNECTED TO A SEPARATE DETECTOR AMPLIFIER.
6. ALL TEMPORARY PAVEMENT MARKING SHALL BE WET REFLECTIVE TEMPORARY TAPE, TYPE III.
7. THE FIRST TWO SIGNS ENTERING THE WORK ZONE SHALL HAVE MONO-DIRECTIONAL FLASHING BEACONS.
8. USE SUGGESTED TRAFFIC CONTROL AND STAGING PLAN IN CONJUNCTION WITH STANDARD 701316.
9. EMERGENCY PREEMPTION WILL BE REQUIRED FOR THE TEMPORARY BRIDGE TRAFFIC SIGNALS. THE COST OF THIS WILL BE INCLUDED IN THE CONTRACT UNIT PRICE FOR TEMPORARY BRIDGE TRAFFIC SIGNAL INSTALLATION.



FILE NAME = D:\60067-sh-t-staging1.dgn
PLOT DATE = 1/12/2009

CHRISTIAN-ROGE & ASSOCIATES, INC.
ENGINEERS-PLANNERS-SURVEYORS
211 WEST WACKER DRIVE
CHICAGO, ILLINOIS 60606
PHONE: (312)372-2023 FAX: (312)372-5274

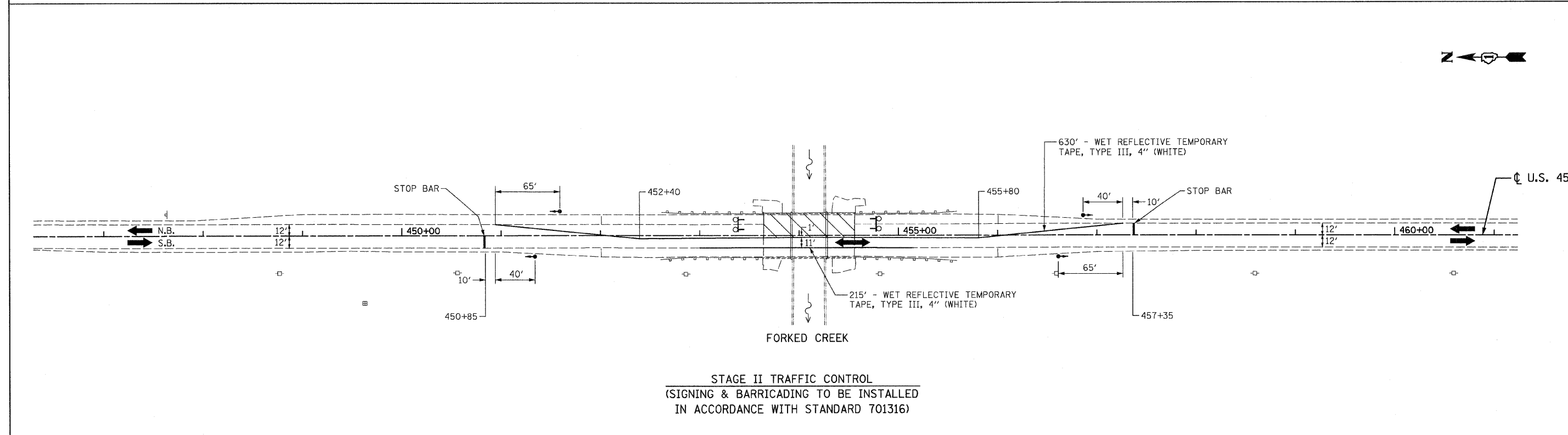
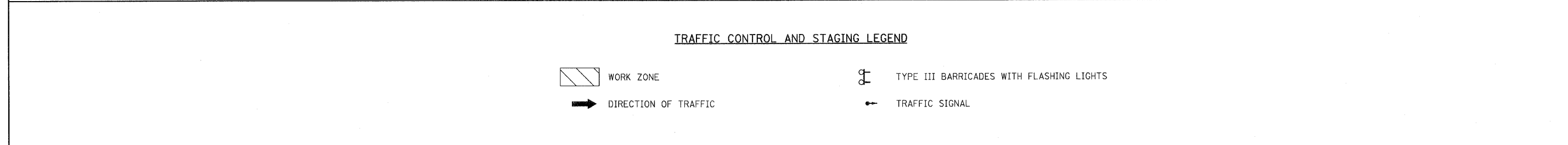
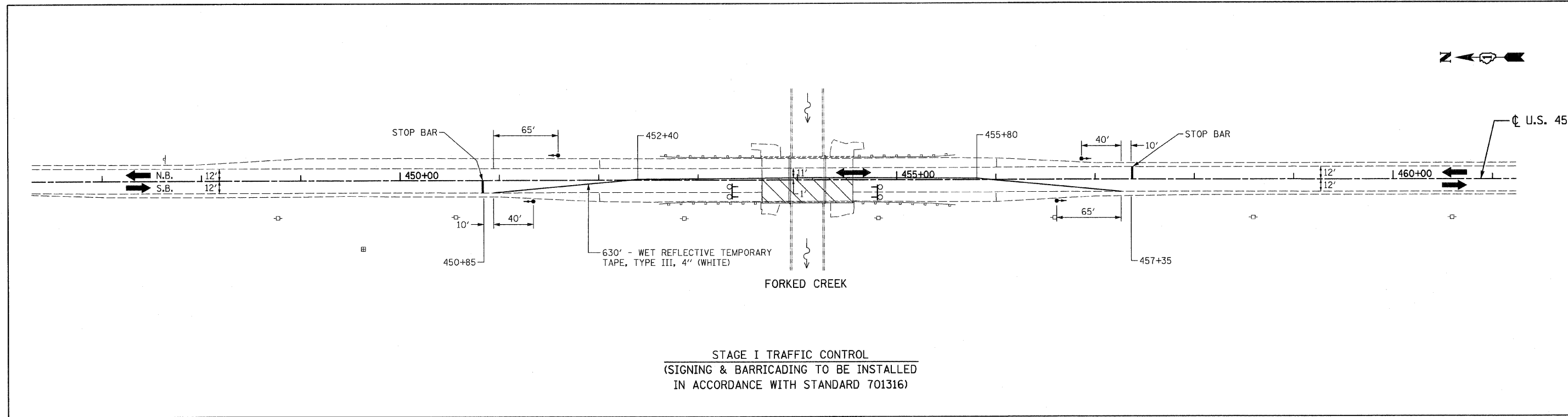
DESIGNED - S.J.P.	REVISED -
DRAWN - A.C.S.	REVISED -
CHECKED - E.J.M.	REVISED -
DATE - JANUARY 12, 2009	REVISED -


**STATE OF ILLINOIS
DEPARTMENT OF TRANSPORTATION**

**SUGGESTED MAINTENANCE OF TRAFFIC NOTES AND DETAILS
U.S. 45**

SCALE: NONE SHEET NO. 1 OF 2 SHEETS STA. TO STA.

F.A.P. RTE.	SECTION	COUNTY	TOTAL SHEETS	SHEET NO.
330	105 B-3-I	WILL	18	7
CONTRACT NO. 60D67				
FED. ROAD DIST. NO. 1 ILLINOIS FED. AID PROJECT				

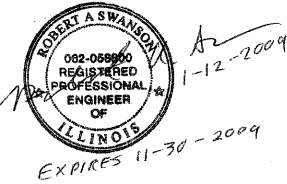


FILE NAME = D168067-sh1-staging2.dgn PLOT DATE = 1/12/2009	 CHRISTIAN-ROGE & ASSOCIATES, INC. ENGINEERS-PLANNERS-SURVEYORS 211 WEST WACKER DRIVE CHICAGO, ILLINOIS 60606 PHONE: (312)372-2023 FAX: (312)372-5274	DESIGNED - S.J.P.	REVISED -	STATE OF ILLINOIS DEPARTMENT OF TRANSPORTATION	SUGGESTED TRAFFIC CONTROL AND STAGING PLAN U.S. 45	F.A.P. RTE. 330	SECTION 105 B-3-1	COUNTY WILL	TOTAL SHEETS 18	SHEET NO. 8
		DATE - JANUARY 12, 2009	REVISED -			SCALE: 1" = 50' SHEET NO. 2 OF 2 SHEETS STA. 446+29 TO STA. 461+23			FED. ROAD DIST. NO. 1 ILLINOIS FED. AID PROJECT	

LEGENDS

DESCRIPTION

EXISTING	PROPOSED	
—A—	⊗	400W, 120V, MCIII HPS. WITH PHOTO CELL 15' MA, 50 MH ON WOOD POLE,
—AC—	—	AERIAL LINE (COMED/TELEPHONE)
⊗	⊗	AERIAL ELECTRIC CABLE (OF SIZE NOTED) WITH MESSENGER WIRE WOODEN POLE
TL-1	TL-1	TEMPORARY LIGHTING UNIT NUMBER - ONE
⊕	⊕	5/8" x 10' GROUND ROD
⊕	⊕	COMBINATION LIGHTING AND TRAFFIC POLE MOUNTED ELECTRICAL SERVICE BOX
⊕	⊕	COMED POWER POLE
⊕	⊕	TELEPHONE SPLICE BOX
⊕	⊕	TRAFFIC SIGNAL LOOP
⊕	⊕	TRAFFIC SIGNAL

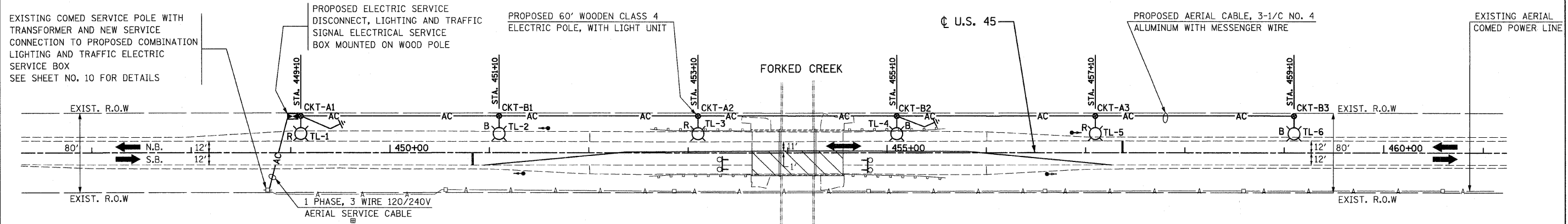


BILL OF MATERIALS - TEMPORARY LIGHTING

ITEM DESCRIPTION	UNIT	QUANTITY
ELECTRIC SERVICE INSTALLATION	EACH	1
ELECTRIC UTILITY SERVICE CONNECTION	L SUM	1
AERIAL CABLE, 3-1/4 NO. 4 WITH MESSENGER WIRE	FOOT	1,060
LUMINAIRE, SODIUM VAPOR, HORIZONTAL MOUNT, PHOTO-CELL CONTROL, 400 WATT	EACH	6
LIGHT POLE, WOOD, 60 FOOT, CLASS 4, WITH 15 FT. MAST ARM	EACH	6
REMOVAL OF TEMPORARY LIGHTING UNITS	EACH	6
MAINTENANCE OF LIGHTING SYSTEM	CAL MO	4
COMBINATION POLE MOUNTED ELECTRIC SERVICE BOX	EACH	1
GROUND ROD, 5/8" DIA. x 10 FT.	EACH	1
ELECTRIC SERVICE DISCONNECT, LIGHTING AND TRAFFIC SIGNAL	EACH	1



**MAINTENANCE OF TRAFFIC STAGE I CONSTRUCTION SHOWN
TEMPORARY LIGHTING TO REMAIN ACTIVE DURING STAGE I & II**



NOTES:

- THE MATERIALS AND INSTALLATION METHODS SHALL COMPLY WITH THE LATEST CODES, STANDARDS AND ORDINANCES OF FEDERAL, STATE AND LOCAL GOVERNING BODIES HAVING JURISDICTION. ALL WORKS SHOWN ON THE PLANS AND DESCRIBED ELSEWHERE SHALL ALSO CONFORM TO THE LATEST NATIONAL ELECTRICAL CODE.
- ALL MATERIAL PARTS OF THE LIGHT POLES SHALL BE GROUNDED AND BONDED CONFORMING TO NEC ARTICLE 250. THE EQUIPMENT GROUND SHALL BE CONTINUOUS AND CONNECTED UP TO THE ELECTRICAL SYSTEM GROUND. THIS WORK SHALL BE INCLUDED IN THE LIGHT POLE PAY ITEM.
- THE LIGHT POLE SETBACK FROM THE EDGE OF TRAVEL PAVEMENT SHALL BE 20' TO AVOID CLEARZONE, UNLESS THE LIGHT POLE IS BEHIND GUARDRAIL. THE LIGHT POLES WHEN INSTALLED BEHIND THE GUARDRAIL SHALL HAVE AT LEAST EIGHT FOOT SETBACK FROM THE BACK OF THE SHOULDER AND OR AS DIRECTED BY THE ENGINEER.
- THE TEMPORARY LIGHT POLES SHALL HAVE IDENTIFICATION NUMBERS AS SHOWN ON THE PLANS.
- THE CONTRACTOR SHALL BE RESPONSIBLE FOR ANY DAMAGE TO THE LIGHTING AND TRAFFIC SIGNAL INSTALLATION. THE CONTRACTOR SHALL NOT INSTALL DAMAGED EQUIPMENT OR DEFECTIVE DEVICES, INSTEAD THE CONTRACTOR SHALL REPLACE IT WITH NEW ONES AT NO COST TO IDOT AND/OR AS DIRECTED BY THE ENGINEER.
- THE CONTRACTOR SHALL SPLICE AERIAL CABLE AT THE LIGHT POLE USING HEAT SHRINKABLE CAPS WITH THE FACTORY APPLIED WATERPROOF SEALANT. THE INSTALLATION AND REQUIRED MATERIAL SHALL BE INCLUDED IN THE LIGHT POLE PAY ITEM.
- THE CONTRACTOR SHALL FOLLOW THE CONSTRUCTION AND STAGING AS SHOWN ON THE PLANS OR AS DIRECTED BY THE ENGINEER. FURTHERMORE, THE CONTRACTOR SHALL COORDINATE ALL SUCH ACTIVITIES BEING DONE IN THE SAME AREA BY THE UTILITY COMPANIES OR OTHER CONTRACTORS AND SETUP COORDINATION MEETINGS IF NECESSARY WITHOUT ANY ADDITIONAL FINANCIAL COMPENSATION.
- THE PROPOSED TEMPORARY LIGHTING SHALL BE COMPLETED, TESTED, OPERATIONAL AND VERIFIED BY IDOT BEFORE STAGE I TRAFFIC CONTROL IS IN PLACE. THE CONTRACTOR SHALL SUBMIT A STAGING SCHEDULE IDENTIFYING THE STARTING AND COMPLETION DATES PRIOR TO THE COMMENCEMENT OF WORK FOR PROCUREMENT, INSTALLATION AND/OR REMOVAL OF EXISTING MATERIAL AND/OR EQUIPMENT.
- ALL AREAS DISTURBED UNDER THIS CONTRACT SHALL BE RESTORED TO THE ORIGINAL CONDITION OR BETTER TO THE SATISFACTION OF THE ENGINEER.
- LIGHTING SHALL BE KEPT OPERATIONAL AND ACTIVE FROM ONE HOUR BEFORE SUNSET TO ONE HOUR AFTER SUNRISE. AS PER "NATIONAL ELECTRIC CODE", OVERHEAD SPANS OF AERIAL CABLE AND MESSENGER WIRE MUST HAVE A VERTICAL CLEARANCE OF 18' MINIMUM ABOVE THE GROUND AT ALL TIMES AND AT ALL LOCATIONS ON THE PROJECT.
- THE CONTRACTOR SHALL INSTALL ALL EQUIPMENT SO AS TO COMPLY WITH REQUIRED ELECTRICAL CLEARANCES PER NATIONAL ELECTRICAL CODE (NEC) SECTION 225-18, NATIONAL ELECTRICAL SAFETY CODE AND COMED REQUIREMENTS.
- GROUND RODS SHALL BE INSTALLED AT EVERY THIRD TEMPORARY LIGHT POLE AND SHALL BE PAID UNDER THE ITEM "GROUND ROD, 5/8" DIA. x 10 FT.", EXCEPT FOR THE GROUND ROD AT THE LIGHT POLE WITH SERVICE DISCONNECT BOX. THE LATTER (GROUND ROD) SHALL BE INCLUDED IN THE PAY ITEM "ELECTRIC SERVICE DISCONNECT, LIGHTING AND TRAFFIC SIGNAL".
- THE QUANTITIES AS SHOWN IN THE BILL OF MATERIALS FOR THE TEMPORARY LIGHTING IS APPROXIMATE. THE CONTRACTOR SHALL BE RESPONSIBLE FOR FIELD VERIFYING ALL QUANTITIES PRIOR TO ORDERING ANY MATERIALS OR EQUIPMENT.
- THE TEMPORARY LIGHTING SHALL USE AERIAL CABLES AS SHOWN ON THE PLANS. HOWEVER, THE UNDERGROUND NEW ELECTRICAL INSTALLATION, IF ANY, SHALL BE AT A MINIMUM 30 INCHES BELOW GRADE AND SHALL HAVE ELECTRICAL WARNING TAPE CONFORMING TO IDOT STANDARDS.
- THE CONTRACTOR SHALL NOTIFY THE UTILITY COMPANY AS SOON AS POSSIBLE CONCERNING PENDING ELECTRICAL SERVICE INSTALLATION AND CONNECTION TO ENSURE THE AVAILABILITY OF ELECTRICAL POWER SUPPLY IN A TIMELY MANNER.
- THE CONTRACTOR MAY MODIFY ELECTRICAL IDOT STANDARD DETAILS AS NECESSARY TO SUIT SPECIFIC SITE CONDITIONS. HOWEVER, THE CONTRACTOR SHALL OBTAIN THE ENGINEER'S APPROVAL PRIOR TO THE INSTALLATION.
- THE REMOVAL OF TEMPORARY LIGHTING SHALL INCLUDE, BUT NOT LIMITED TO: ALL WOODEN POLES, LUMINAIRES WITH MAST ARMS, MESSENGER WIRES / CABLES, COM ED SERVICE CABLES, CONDUITS AND/OR SERVICE BOXES AND HAULING AWAY OF THESE ITEMS FROM THE PROJECT SITE. ALL TEMPORARY LIGHTING EQUIPMENT AND MATERIAL REMOVED FROM THE PROJECT SHALL BECOME THE PROPERTY OF THE CONTRACTOR.
- THE EXACT LOCATION OF EXISTING POWER POLES WITH COMED TRANSFORMERS TO BE DETERMINED IN THE FIELD. COMED CONTACT INFORMATION FOR THIS PROJECT IS AS FOLLOWS:
FIELD REPRESENTATIVE: LUCILLE JONES (815) 724-5607
ACCOUNT NO. 16751-03028, TRANSFORMER NO. 506312A1

FILE NAME = D168067-ght-light.dgn
PLOT DATE = 1/12/2009

CHRISTIAN-ROGE & ASSOCIATES, INC.
ENGINEERS-PLANNERS-SURVEYORS
211 WEST WACKER DRIVE
CHICAGO, ILLINOIS 60606
PHONE: (312)372-2023 FAX: (312)372-5274

DESIGNED - M.A.
DRAWN - M.A.
CHECKED - E.J.M.
DATE - JANUARY 12, 2009

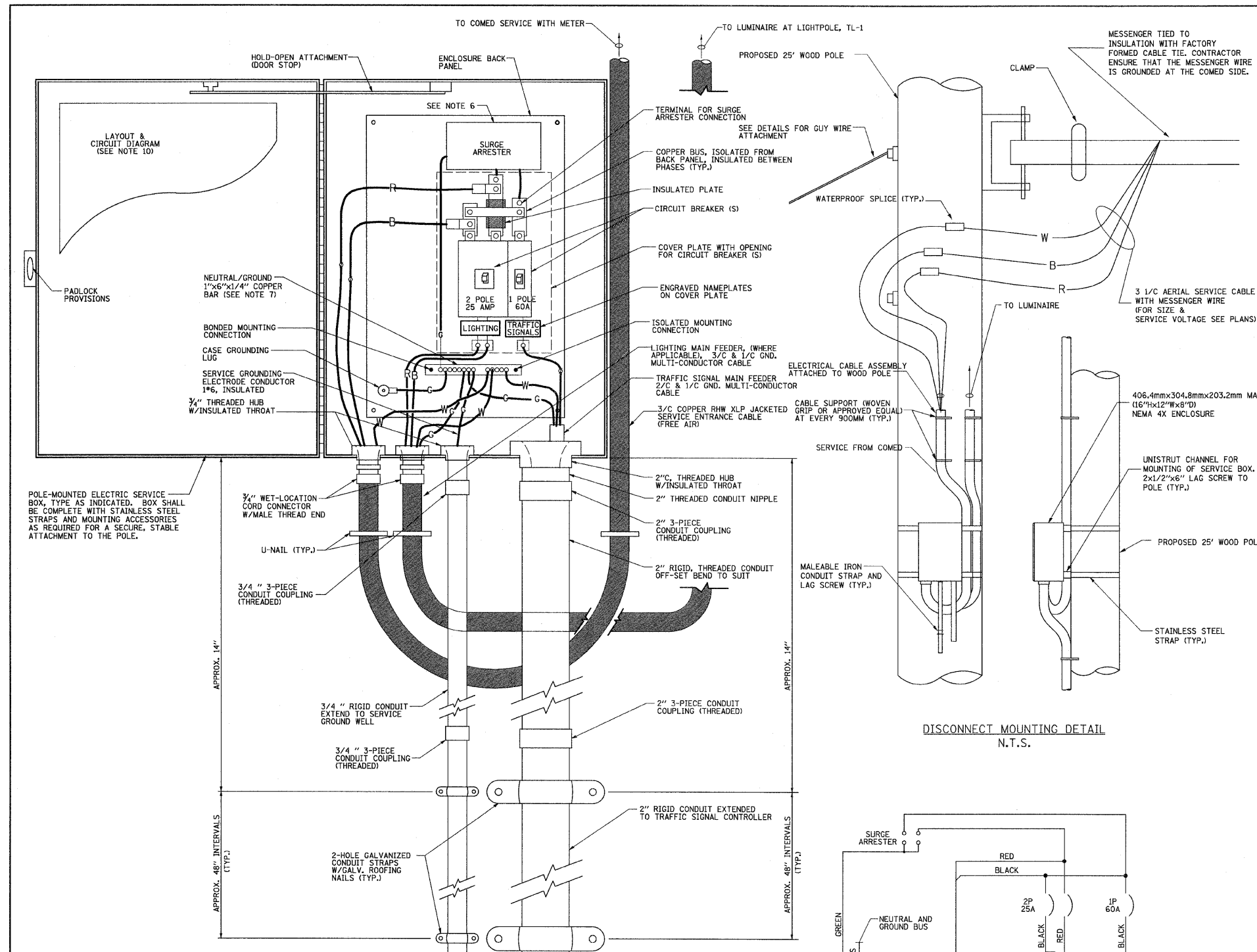
REVISED -
REVISED -
REVISED -
REVISED -

**STATE OF ILLINOIS
DEPARTMENT OF TRANSPORTATION**

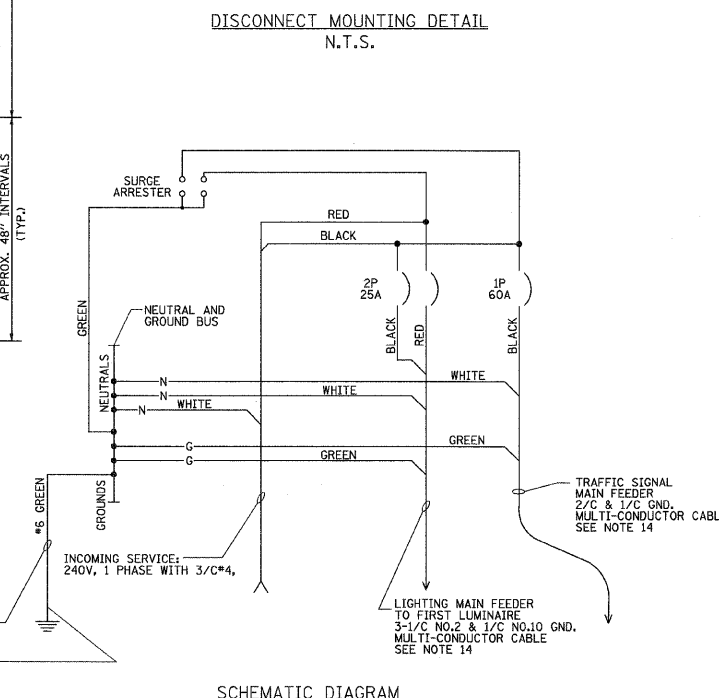
**TEMPORARY LIGHTING PLAN
U.S. 45**

SCALE: 1" = 50' SHEET NO. 1 OF 2 SHEETS STA. 446+29 TO STA. 461+23

F.A.P. RTE.	SECTION	COUNTY	TOTAL SHEETS	SHEET NO.
330	105 B-3-I	WILL	18	9
CONTRACT NO. 60D67				
FED. ROAD DIST. NO. 1 ILLINOIS FED. AID PROJECT				



POLE-MOUNTED ELECTRIC SERVICE ENTRANCE
GENERAL LAYOUT DIAGRAM



SCHEMATIC DIAGRAM

NOTES

- ELECTRIC SERVICE SHALL BE OF THE VOLTAGE INDICATED OR DESIGNATED BY THE ENGINEER, AND SERVICE DROP CABLE SHALL BE COMPATIBLE WITH THE SERVICE ACCORDINGLY. SOME INSTALLATIONS MAY CALL FOR SERVICE ENTRANCE EQUIPMENT SUITABLE FOR 3-WIRE SERVICE EVEN THOUGH INITIALLY WIRED FOR 2-WIRE SERVICE.
- THE POLE-MOUNTED ELECTRIC SERVICE BOX DETAIL DEPICTS THE BASIC CONSTRUCTION OF THE EQUIPMENT. SLIGHT MODIFICATIONS APPLY FOR DIFFERING SERVICES AND APPLICATIONS AS FOLLOWS:
FULLY EQUIPPED FOR 240/120V. 3W SERVICE, COMPLETE WITH LIGHTING MAIN BREAKER
FULLY EQUIPPED FOR 240/120V. 3W SERVICE, BLANK COVER IN LIEU OF LIGHTING MAIN BREAKER
EQUIPPED FOR 120V. SERVICE, COMPLETE WITH 1P, 60A. TRAFFIC SIGNALS MAIN BREAKER
EQUIPPED FOR 120V. SERVICE, COMPLETE WITH 1P, 40A. TRAFFIC SURVEILLANCE MAIN BREAKER
- THE ELECTRIC SERVICE EQUIPMENT ASSEMBLY SHALL BE UL LISTED AS SUITABLE FOR USE AS SERVICE ENTRANCE EQUIPMENT.
- THE ELECTRIC SERVICE EQUIPMENT ENCLOSURE SHALL BE NEMA 4X STAINLESS STEEL, NOMINALLY 12"W X 16"H X 8"D, WITH A PIANO-HINGED DOOR, STEEL BACK PANEL, FAST-ACTING STAINLESS STEEL ENCLOSURE CLAMPS, PADLOCK PROVISIONS AND DOOR STOP, HOFFMAN CATALOG NO. A-16H1208SS6LP/A-16, P12/A-DSTOPK/C-PMK12, OR APPROVED EQUAL.
- CIRCUIT BREAKERS SHALL BE THERMAL MAGNETIC BOLT-ON TYPE WITH A MINIMUM INTERRUPTING CAPACITY OF 25,000 SYMMETRICAL AMPERES AT 120 VOLTS. THEY SHALL BE LOCKABLE IN THE "OFF" POSITION FOR COMPLIANCE WITH OSHA LOCK-OUT/TAG-OUT REQUIREMENTS. HANDLES SHALL BE TRIP FREE.
- THE SURGE PROTECTOR SHALL BE SUITABLE FOR 240/120 VOLT SINGLE PHASE 60HZ AC ELECTRICAL SERVICE, WITH A SURGE ENERGY CAPABILITY OF 2160 JOULES OR BETTER AT 8/20 MICRO-SECONDS, RATED -40 TO 60 DEGREES C., WITH LED OPERATING INDICATORS, AND SHALL BE UL LISTED PER UL 1449, CUTLER-HAMMER CMOV230L065XST OR APPROVED EQUAL.
- BUS BARS, CONNECTORS, AND LUGS SHALL BE COPPER, INSULATED AND ISOLATED, AND CONFIGURED TO PREVENT SHORTED CONDITIONS FROM TIGHTENING TERMINATIONS, ETC. THE OVERALL BUS SECTION SHALL BE CONFIGURED BEHIND AN INSULATING BARRIER SHIELD WHICH IS REMOVABLE FOR ACCESS TO CONNECTIONS, OR THE ASSEMBLY SHALL BE A MANUFACTURED SPECIALTY PANELBOARD, CUTLER-HAMMER PRL2A OR APPROVED EQUAL.
- THE COMBINATION GROUND AND NEUTRAL BAR SHALL BE CONFIGURED WITH SEPARATE GROUND AND NEUTRAL SECTIONS AND SPARE TERMINALS AS INDICATED. THE HEADS OF GROUND SCREWS SHALL BE PAINTED GREEN. THE HEADS OF NEUTRAL SCREWS SHALL BE PAINTED WHITE. THE SERVICE NEUTRAL AND SERVICE GROUNDING ELECTRODE CONDUCTOR SHALL BE TERMINATED ADJACENT TO EACH OTHER AT THE DIVIDE BETWEEN THE SECTIONS AND WIRING SHALL BE TERMINATED ONLY UPON THE APPROPRIATE SECTION.
- THE WIRING TERMINALS, INCLUDING THE GROUND/NEUTRAL BAR SHALL BE ARRANGED TO PROVIDE ADEQUATE ROOM FOR PERFORMING FIELD TERMINATIONS.
- A PLASTIC LAMINATED LAYOUT AND CIRCUIT DIAGRAM SHALL BE MECHANICALLY SECURED TO THE INTERIOR SIDE OF THE ENCLOSURE DOOR.
- A 2-COLOR ENGRAVED PLASTIC NAMEPLATE, ATTACHED WITH SCREWS, AND ENGRAVED AS INDICATED, SHALL BE PROVIDED FOR EACH MAIN BREAKER.
- LUGS AND CONNECTORS SHALL BE RATED FOR 75 C CONDUCTOR.
- THE EXACT MOUNTING HEIGHT OF THE BOX SHALL BE FIELD DETERMINED TO AVOID OBSTRUCTIONS AND PUBLIC ACCESS. TYPICAL HEIGHT SHALL BE APPROXIMATELY 10 FEET ABOVE GRADE.
- THE FEEDER CABLE (MATERIAL & INSTALLATION) FROM SERVICE DISCONNECT TO THE FIRST LIGHT POLE, AS SHOWN ON PLANS IS INCLUDED UNDER THE PAY ITEM "ELECTRIC SERVICE DISCONNECT, LIGHTING AND TRAFFIC SIGNAL".

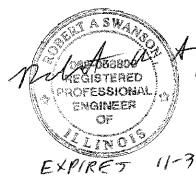
CIRCUIT NO.	CIRCUIT BREAKER / POLES	UTILITY DESCRIPTION	LOAD ¹ (WATTS)	CURRENT ² (AMPERES)
A	25A / 2P	(4) 400W HPS POLE NOS.TL-1, TL-3, TL-5, & TL-7	1,920	16.84
B		(3) 400W HPS POLE NOS.TL-2, TL-4, & TL-6	1,440	12.63
TOTAL			3,360	29.47

NOTE:

- LOAD INCLUDES 20% BALLAST LOSSES FOR LUMINAIRES
- CURRENT CALCULATIONS INCLUDE A POWER FACTOR OF 0.95.



6" DECAL ON FRONT COVER



FILE NAME = D168067-sht-light2.dgn
PLOT DATE = 1/12/2009
CHRISTIAN-ROGE & ASSOCIATES, INC.
ENGINEERS-PLANNERS-SURVEYORS
211 WEST WACKER DRIVE
CHICAGO, ILLINOIS 60606
PHONE: (312)372-2023 FAX: (312)372-5274

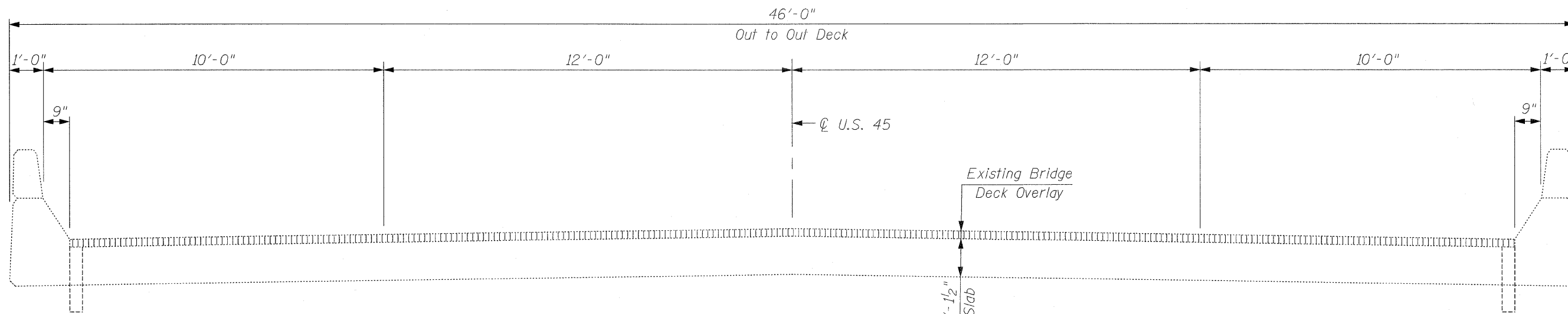
DESIGNED - M.A.
DRAWN - M.A.
CHECKED - E.J.M.
DATE - JANUARY 12, 2009
REVISED -
REVISED -
REVISED -
REVISED -

STATE OF ILLINOIS
DEPARTMENT OF TRANSPORTATION

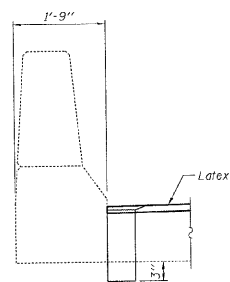
TEMPORARY LIGHTING NOTES AND DETAILS
U.S. 45

SCALE: NONE SHEET NO. 2 OF 2 SHEETS STA. 446+29 TO STA. 461+23

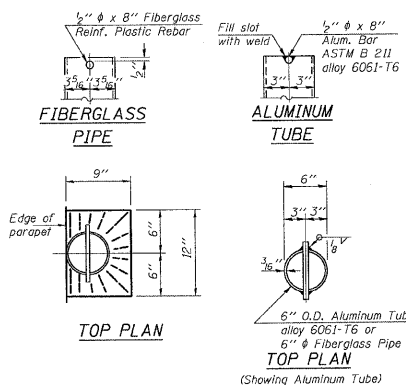
F.A.P. RTE.	SECTION	COUNTY	TOTAL SHEETS	SHEET NO.
330	105 B-3-1	WILL	18	10
CONTRACT NO. 60D67				
FED. ROAD DIST. NO. 1 [ILLINOIS] FED. AID PROJECT				



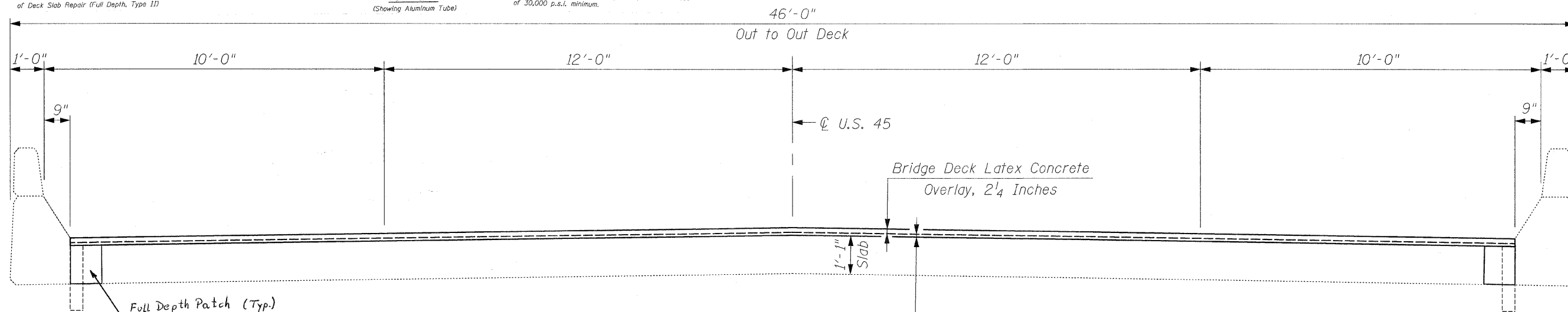
**EXISTING
DECK CROSS SECTION**



SECTION AT PARAPET
Cost of drain is included in the cost of Deck Slab Repair (Full Depth, Type II)



Notes:
The exterior surfaces of the floor drains shall be painted with the finish coat as specified in the special provisions for Cleaning and Painting New Metal Structures. The exterior surfaces of the drains shall be cleaned according to Steel Structures Painting Council's Spec. SSPC-SP1 prior to painting. Fiberglass pipe shall conform to ASTM D 2996, with short-time rupture strength hoop tensile stress of 30,000 p.s.i. minimum.



**PROPOSED
DECK CROSS SECTION**



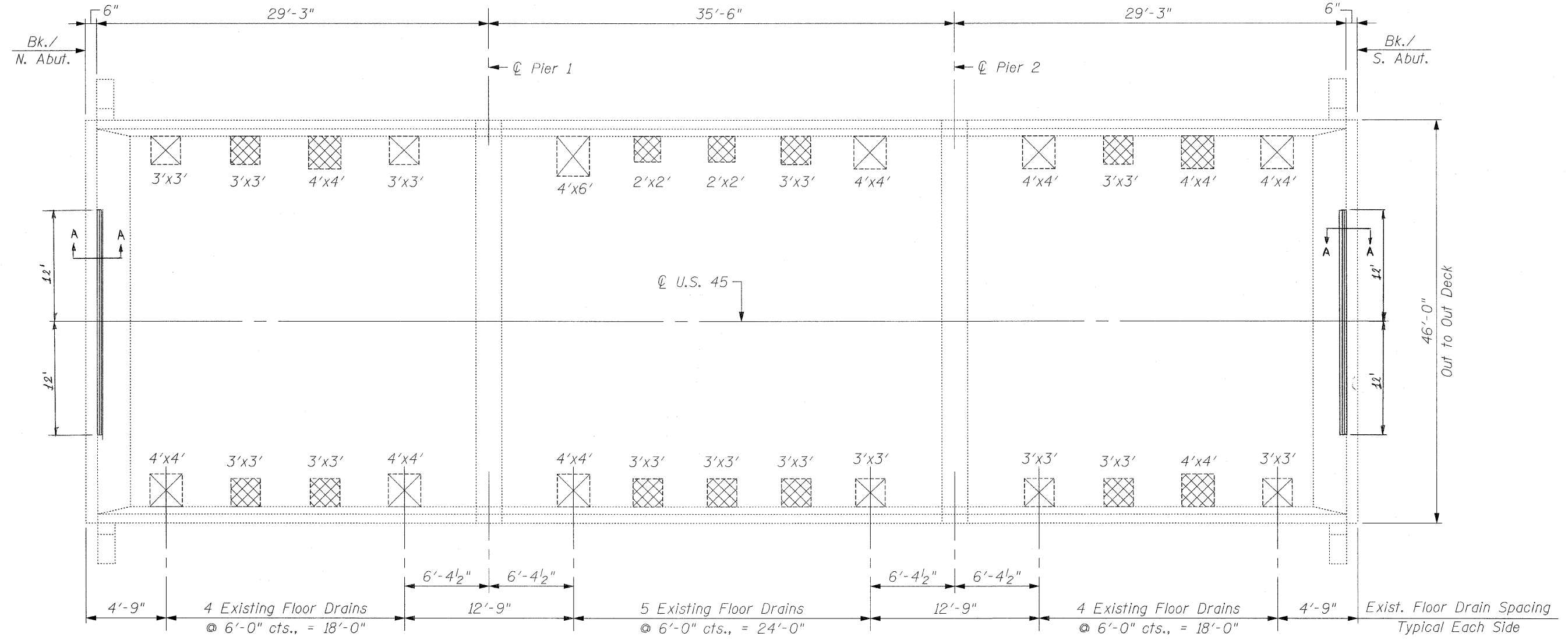
CHRISTIAN-ROGE & ASSOCIATES, INC.
ENGINEERS / PLANNERS / SURVEYORS
211 W. WACKER DRIVE CHICAGO, IL. 60606
PHONE: (312)372-2023 FAX: (312)372-5274

FILE NAME = deck cross section.sht	USER NAME = IDOT	DESIGNED - B.N.S.	REVISED -
		DRAWN - D.L./R.E.S./F.M.	REVISED -
		CHECKED - B.N.S./J.C.N.	REVISED -
		DATE - JANUARY 12, 2009	REVISED -

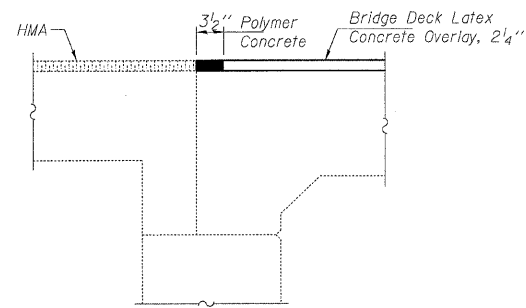
**STATE OF ILLINOIS
DEPARTMENT OF TRANSPORTATION**

DECK CROSS SECTION U.S. 45 OVER FORKED CREEK			
SCALE:		SHEET NO. S2 OF S3 SHEETS	STA. TO STA.
		S.N. 099-0243	

F.A.P. RTE.	SECTION	COUNTY	TOTAL SHEETS	SHEET NO.
330	105 B-3-1	WILL	18	12
CONTRACT NO. 60D67				
FED. ROAD DIST. NO. 1 ILLINOIS FED. AID PROJECT				



PLAN



SECTION A-A

Cost of Polymer Concrete is included in the cost of Bridge Deck Latex Concrete Overlay, 2 1/4"

NOTE:
INSPECTION WAS CONDUCTED ON SEPTEMBER 28, 2007
BY I.D.O.T. FIELD MAINTENANCE ENGINEERS

BILL OF MATERIAL

ITEM	UNIT	QUANTITY
Deck Slab Repair (Full Depth, Type II)	Sq. Yd.	35

LEGEND:

- Deck Slab Repair (Full Depth, Type II), Eliminate Floor Drains
- Deck Slab Repair (Full Depth, Type II), Floor Drains to Remain

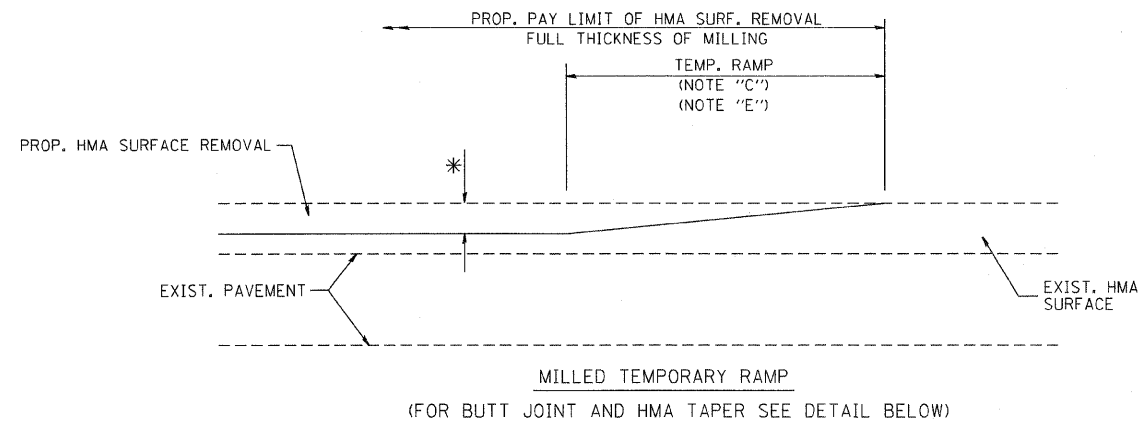
CR & A
CHRISTIAN-ROGE & ASSOCIATES, INC.
ENGINEERS / PLANNERS / SURVEYORS
211 W. WACKER DRIVE CHICAGO, IL 60606
PHONE: (312)372-2023 FAX: (312)372-5274

FILE NAME = deck_repair.sht	USER NAME = IDOT	DESIGNED - B.N.S.	REVISED -
		DRAWN - D.L./R.E.S./F.M.	REVISED -
	PLOT SCALE = 50,0000' / IN.	CHECKED - B.N.S./J.C.N.	REVISED -
	PLOT DATE = 1/12/2009	DATE - JANUARY 12, 2009	REVISED -

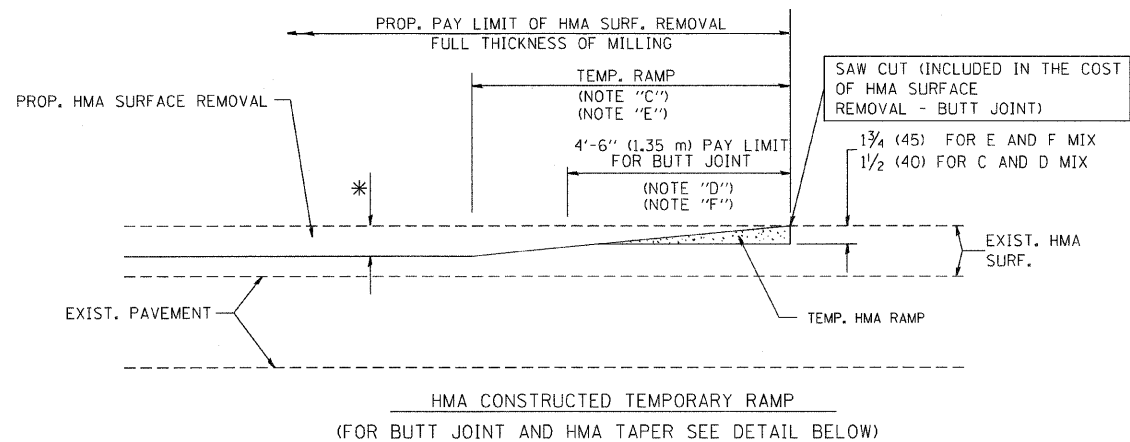
**STATE OF ILLINOIS
DEPARTMENT OF TRANSPORTATION**

**DECK CONCRETE PATCHING
U.S. 45 OVER FORKED CREEK**
S.N. 099-0243
SCALE: SHEET NO. S3 OF S3 SHEETS STA. TO STA.

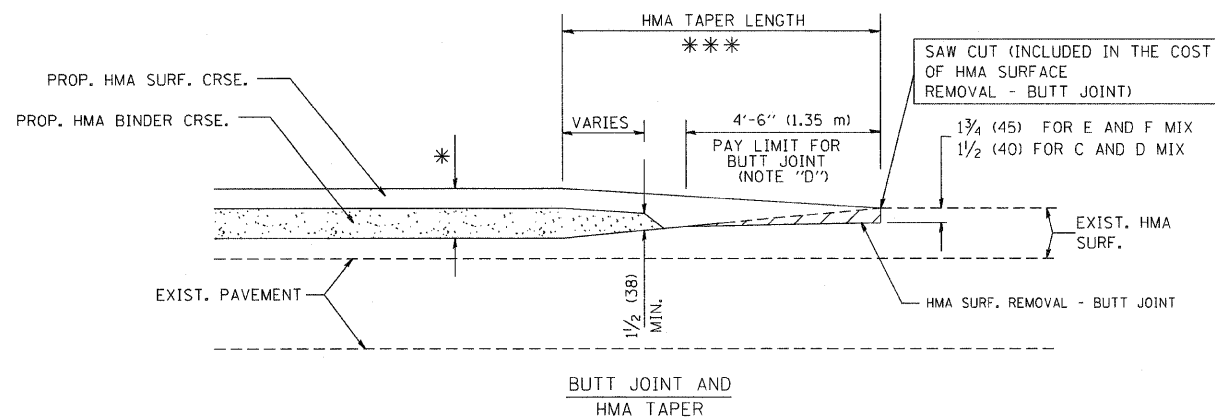
F.A.P. RTE. 330	SECTION 105 B-3-I	COUNTY WILL	TOTAL SHEETS 18	SHEET NO. 13
FED. ROAD DIST. NO. 1 [ILLINOIS] FED. AID PROJECT				CONTRACT NO. 6067



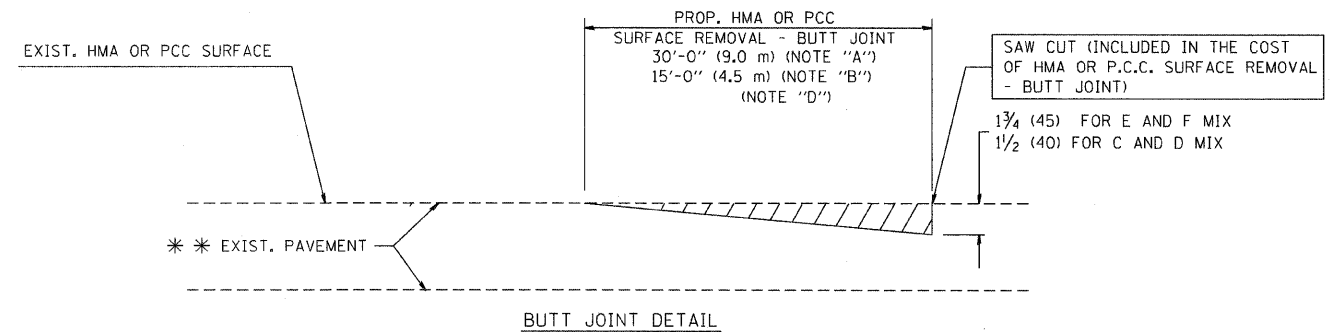
OPTION 1



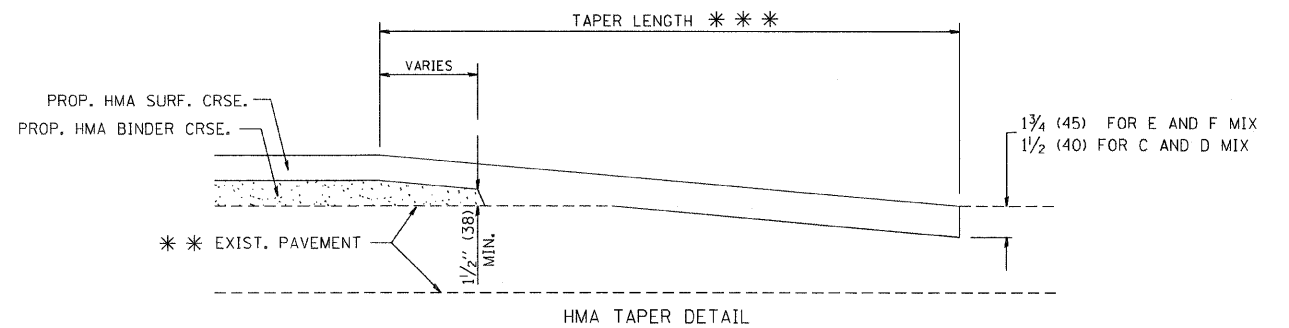
OPTION 2
TYPICAL TEMPORARY RAMP



TYPICAL BUTT JOINT AND HMA TAPER FOR MILLING AND RESURFACING



BUTT JOINT DETAIL



HMA TAPER DETAIL

TYPICAL BUTT JOINT AND HMA TAPER FOR RESURFACING ONLY

*** PC CONCRETE, HMA OR HMA RESURFACED PAVEMENT.

NOTES

- A: MAINLINE ROADWAYS AND MAJOR SIDE ROADS.
 - B: MINOR SIDE ROADS.
 - C: THE TEMP. RAMP SHALL BE CONSTRUCTED IMMEDIATELY UPON REMOVAL OF THE EXISTING HMA SURFACE.
 - D: THE BUTT JOINT SHALL BE CONSTRUCTED IMMEDIATELY PRIOR TO PLACING THE PROPOSED HMA COURSES.
 - E: TAPER THE TEMP. RAMP AT A RATE OF 3'-0" (900 mm) PER 1 INCH (25 mm) OF MILLING THICKNESS.
 - F: INSTALLATION AND REMOVAL OF THE 4'-6" (1.35 m) TEMP. RAMP IS INCLUDED IN COST OF HMA SURFACE REMOVAL - BUTT JOINT
 - G: SEE ARTICLE 406.08 AND 406.14 OF THE STANDARD SPECIFICATIONS FOR "HMA AND/OR PCC SURFACE REMOVAL, BUTT JOINT".
- * SEE TYPICAL SECTIONS FOR MILLING THICKNESS.
- *** 20'-0" (6.1 m) PER 1 (25) RESURFACING (NOTE "A")
10'-0" (3.0 m) PER 1 (25) RESURFACING (NOTE "B")

BASIS OF PAYMENT:

THE BUTT JOINT WILL BE PAID FOR AT THE CONTRACT UNIT PRICE PER SQUARE YARD (SQUARE METER) FOR "HOT-MIX ASPHALT SURFACE REMOVAL - BUTT JOINT" OR FOR "PORTLAND CEMENT CONCRETE SURFACE REMOVAL - BUTT JOINT".

ALL DIMENSIONS ARE IN INCHES (MILLIMETERS) UNLESS OTHERWISE SHOWN.

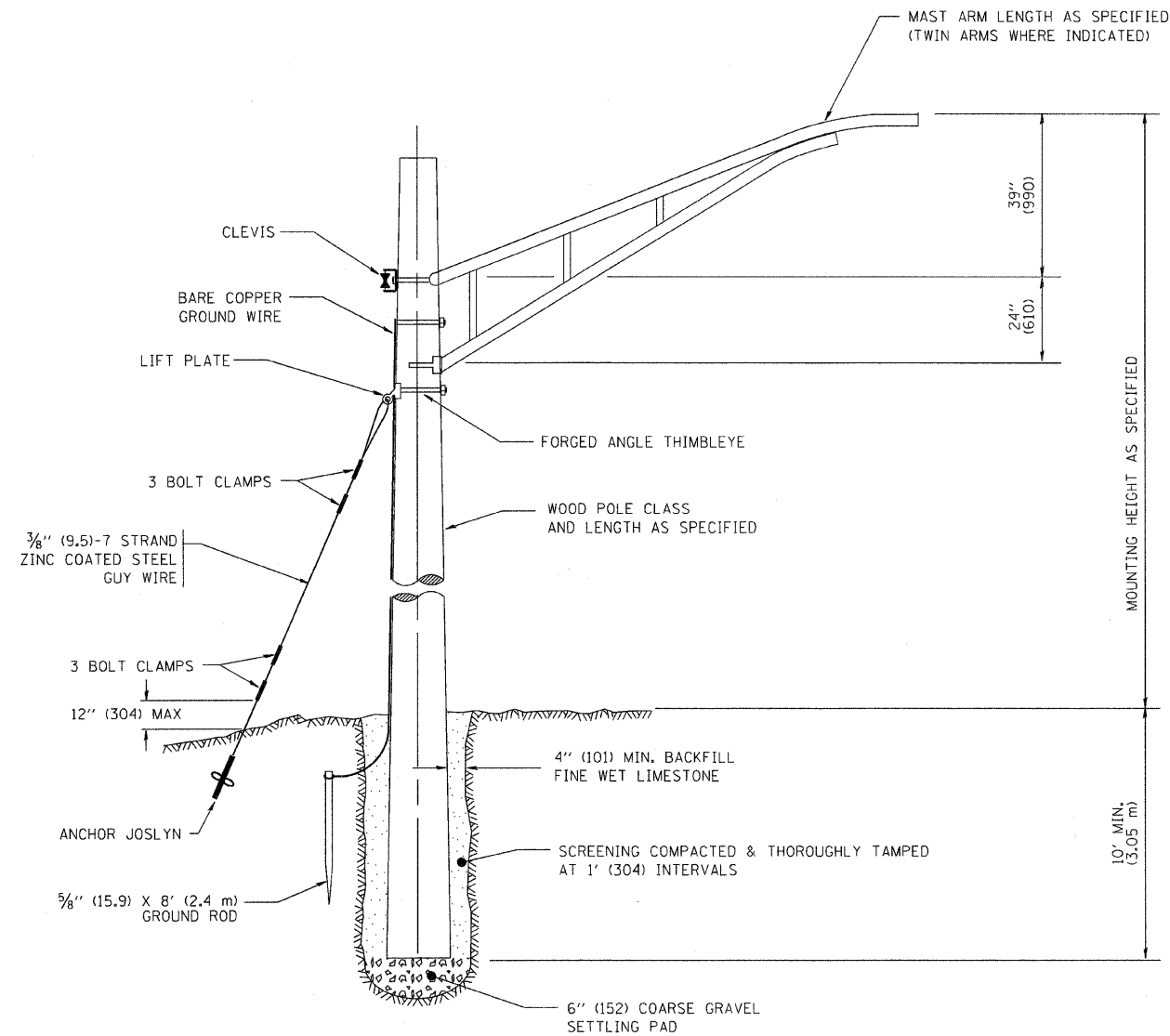
FILE NAME = W:\dststd\22x34\bd32.dgn	USER NAME = goglienobt	DESIGNED - M. DE YONG	REVISED - R. SHAH 10-25-94
		DRAWN -	REVISED - A. ABBAS 03-21-97
	PLOT SCALE = 50.0000' / IN.	CHECKED -	REVISED - M. GOMEZ 04-06-01
	PLOT DATE = 1/4/2008	DATE - 06-13-90	REVISED - R. BORO 01-01-07

STATE OF ILLINOIS
DEPARTMENT OF TRANSPORTATION

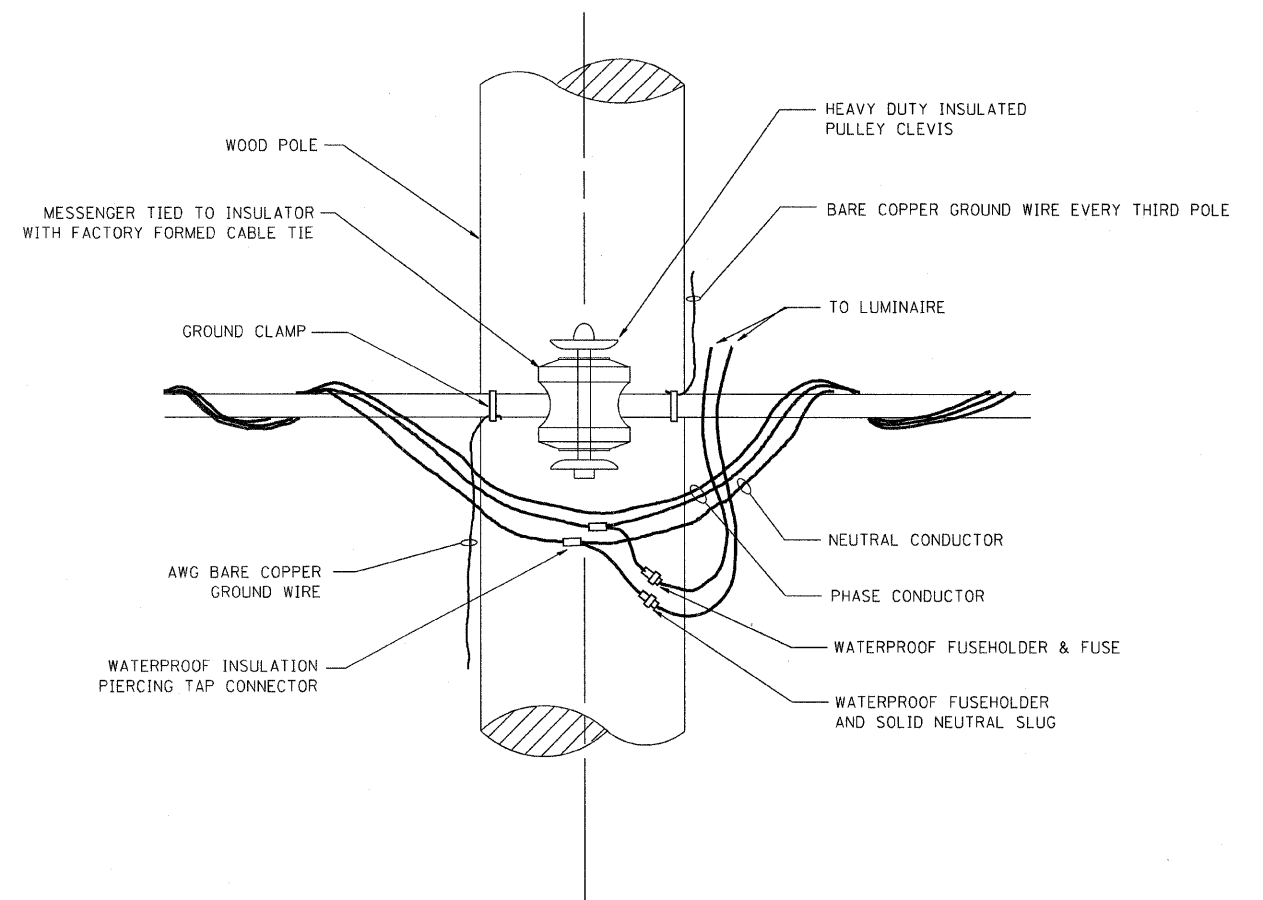
BUTT JOINT AND
HMA TAPER DETAILS

SCALE: NONE SHEET NO. 1 OF 1 SHEETS STA. 446+29 TO STA. 461+23

F.A.P. RTE.	SECTION	COUNTY	TOTAL SHEETS	SHEET NO.
330	105 B-3-I	WILL	18	14
BD400-05 BD32			CONTRACT NO. 60D67	
FED. ROAD DIST. NO. 1 ILLINOIS FED. AID PROJECT				



TEMPORARY LIGHT POLE DETAIL

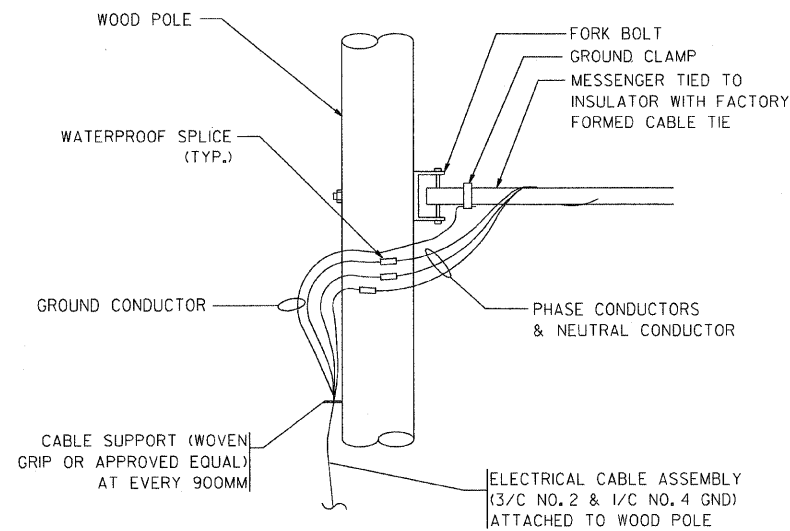


TEMPORARY LIGHT POLE ATTACHMENT DETAIL

NOTES:

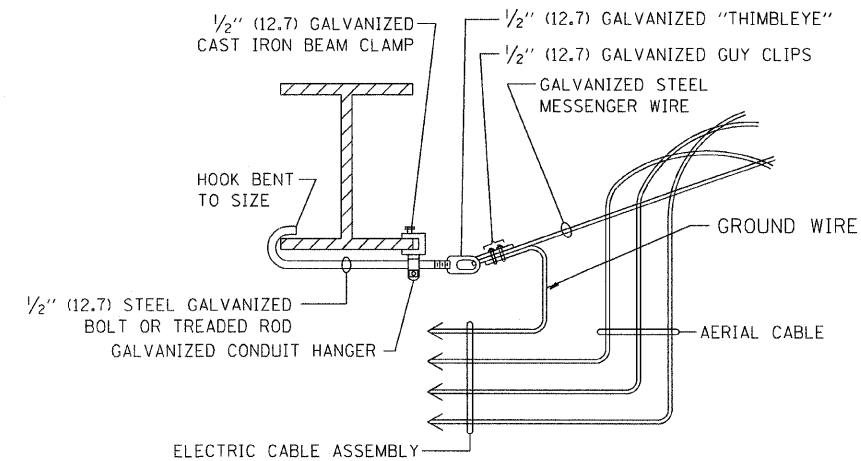
1. ALL DIMENSIONS IN INCHES (MILLIMETERS) UNLESS OTHERWISE INDICATED

FILE NAME = W:\diatstd\22x34\be800.dgn	USER NAME = goglionobt	DESIGNED -	REVISED - 08-08-03	STATE OF ILLINOIS DEPARTMENT OF TRANSPORTATION	TEMPORARY LIGHT POLE DETAILS			F.A.P. RTE.	SECTION	COUNTY	TOTAL SHEETS	SHEET NO.	
	PLOT SCALE = 50,000' / IN.	DRAWN -	REVISED -		SCALE: NONE	SHEET NO. 1 OF 1 SHEETS	STA. 446+29	TO STA. 461+23	330	105 B-3-I	WILL	18	15
	PLOT DATE = 1/4/2008	CHECKED -	REVISED -					BE-800		CONTRACT NO. 60D67			
		DATE -	REVISED -		FED. ROAD DIST. NO. 1 ILLINOIS FED. AID PROJECT								



AERIAL CABLE CONNECTION DETAIL

N.T.S.

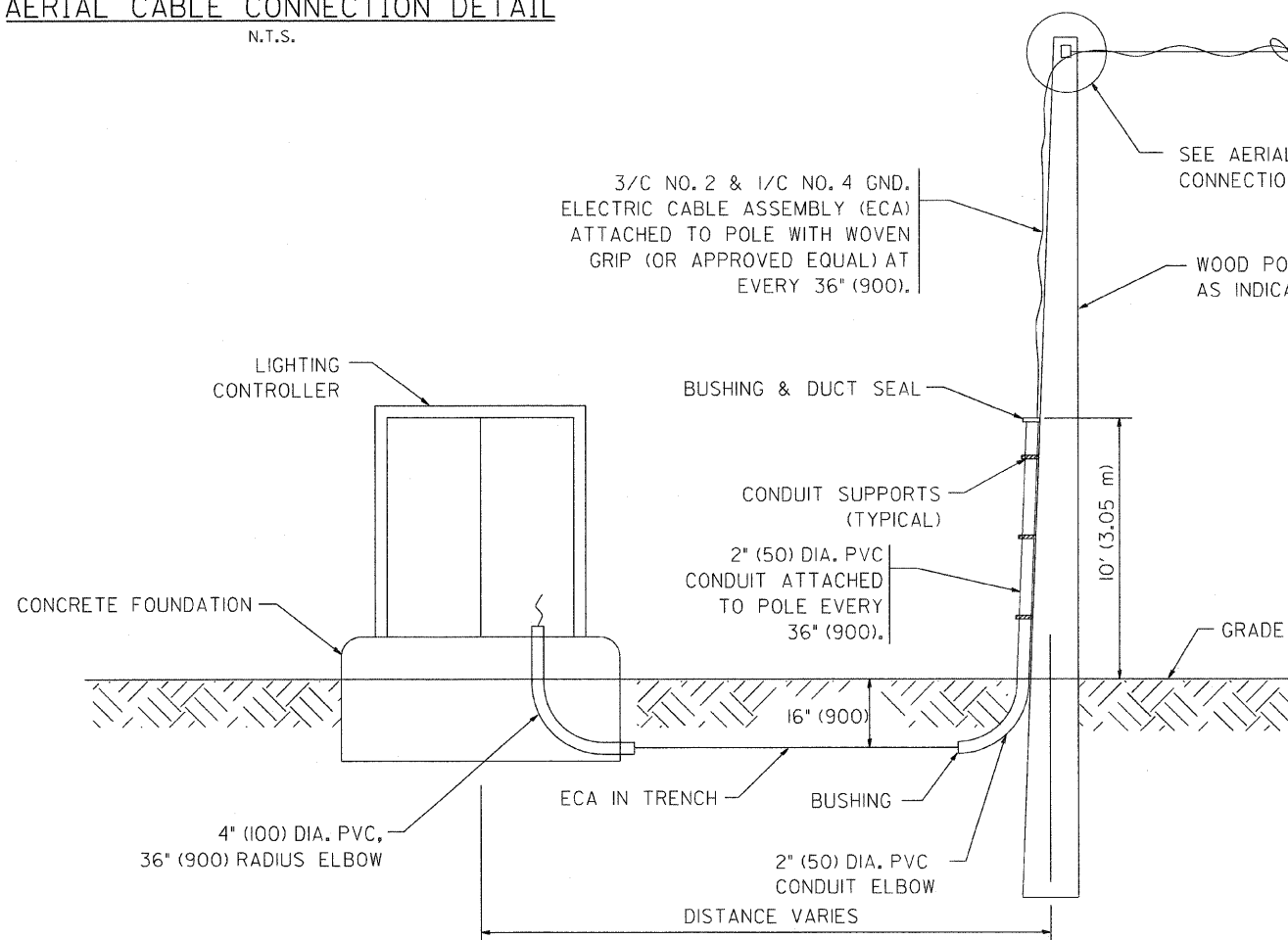


AERIAL CABLE ATTACHED TO STRUCTURE

NOT TO SCALE

NOTES:

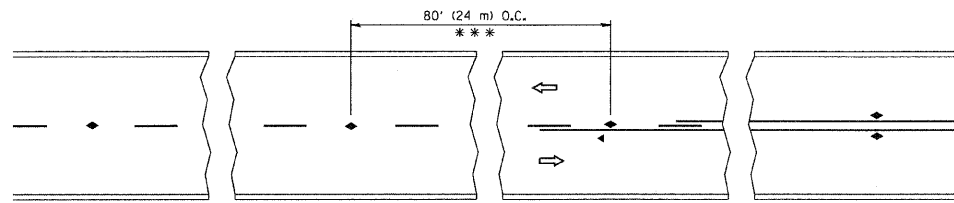
1. ALL DIMENSIONS IN INCHES (MILLIMETERS) UNLESS OTHERWISE INDICATED.
2. SEE PROPOSED LIGHTING PLAN FOR CONDUIT, CABLE AND ROUTING.
3. THE CONTRACTOR SHALL PROVIDE INTERMEDIATE SUPPORTS TO MAINTAIN MINIMUM CLEARANCES. REFER TO AERIAL CABLE ATTACHED TO STRUCTURE DETAIL.
4. COST OF SPLICES AND MOUNTING HARDWARE SHALL BE INCLUDED IN THE UNIT PRICE FOR AERIAL CABLE.



WOOD POLE TO LIGHTING CONTROLLER WIRING CONNECTION DETAIL

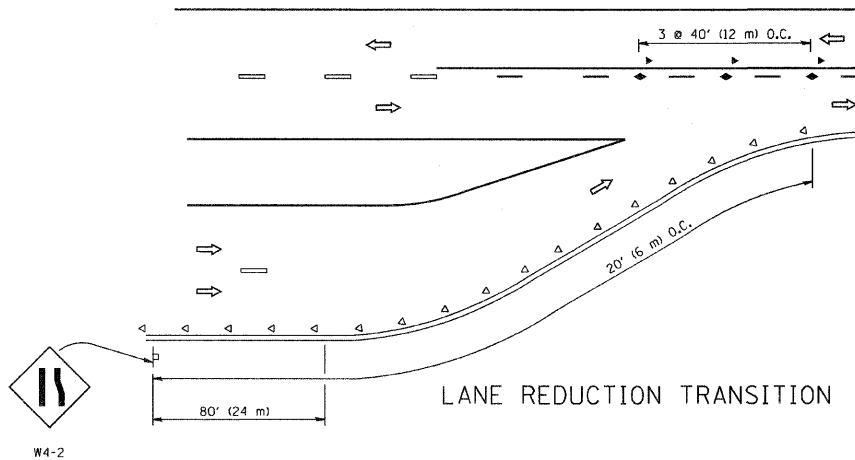
N.T.S.

FILE NAME = W:\dietsd\22x34\be001.dgn	USER NAME = geglienobt	DESIGNED -	REVISED - 08-08-03	STATE OF ILLINOIS DEPARTMENT OF TRANSPORTATION	TEMPORARY AERIAL CABLE INSTALLATION			F.A.P. RTE. 330	SECTION 105B-3-I	COUNTY WILL	TOTAL SHEETS 18	SHEET NO. 16
PLOT SCALE = 50.000' / IN.	CHECKED -	REVISOR -	DATE -		SCALE: NONE	SHEET NO. 1 OF 1 SHEETS	STA. 446+29 TO STA. 461+23	BE-801		CONTRACT NO. 60D67		
PLOT DATE = 1/4/2008	DATE -	REVISOR -	DATE -		FED. ROAD DIST. NO. 1 ILLINOIS FED. AID PROJECT							

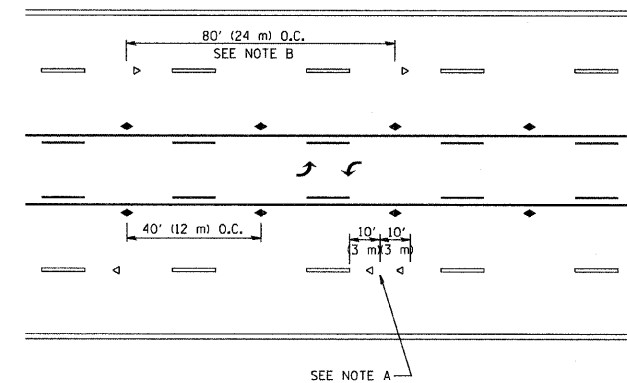


*** REDUCE TO 40' (12 m) O.C. ON CURVES WITH POSTED OR ADVISORY SPEED 45 M.P.H. (70 km/h) OR LESS.

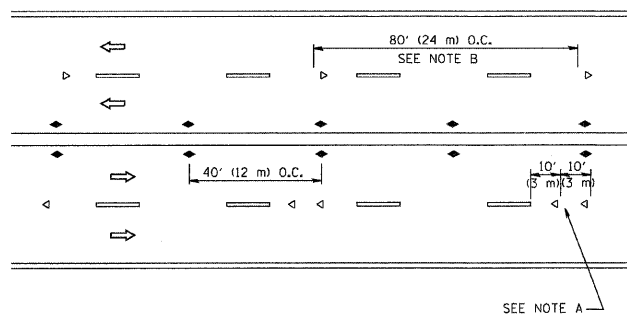
TWO-LANE/TWO-WAY



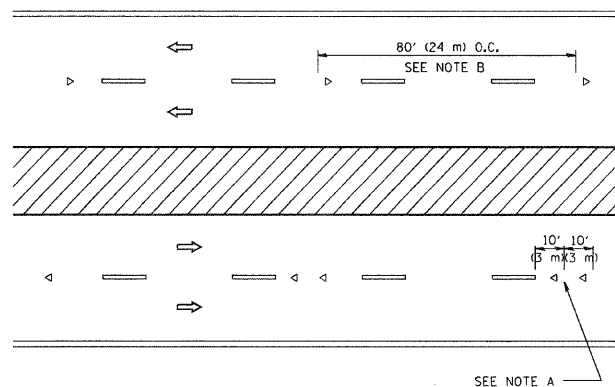
LANE REDUCTION TRANSITION



TWO-WAY LEFT TURN



MULTI-LANE/UNDIVIDED



MULTI-LANE/DIVIDED

GENERAL NOTES

1. MARKERS USED WITH DASHED LINES SHALL BE CENTERED IN THE GAP BETWEEN SEGMENTS.
2. MARKERS USED ADJACENT TO SOLID LINES SHALL BE OFFSET 2 TO 3 (50 TO 75) TOWARD TRAFFIC AS SHOWN.
3. MARKERS THROUGH TANGENTS LESS THAN 500' (150 m) IN LENGTH BETWEEN CURVES SHALL BE INSTALLED AT THE LESSER OF THE TWO CURVE SPACINGS.

SYMBOLS

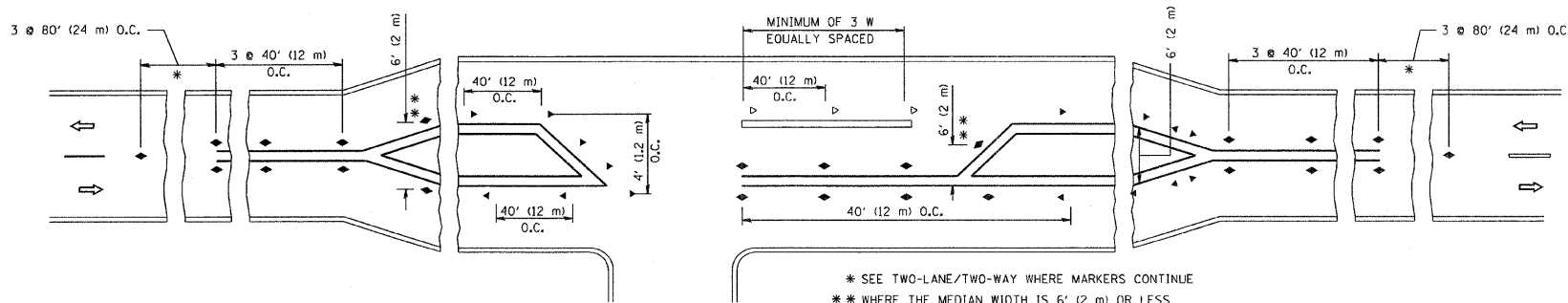
- YELLOW STRIPE
- WHITE STRIPE
- ◄ ONE-WAY AMBER MARKER
- ◄ ONE-WAY CRYSTAL MARKER (W/O)
- ◆ TWO-WAY AMBER MARKER

LANE MARKER NOTES

- B. REDUCE TO 40' (12 m) O.C. ON CURVES WHERE ADVISORY SPEEDS ARE 10 M.P.H. (20 km/h) LOWER THAN POSTED SPEEDS.
- A. USE DOUBLE LANE LINE MARKERS SPACED AS SHOWN.

DESIGN NOTES

1. DOUBLE LANE LINE MARKERS SHALL BE USED UNLESS SPECIFIED OTHERWISE.
2. EXCEPT AS SHOWN ON THE LANE REDUCTION TRANSITION AND FREEWAY EXIT RAMP DETAIL, MARKERS ARE NOT TO BE SPECIFIED ON RIGHT EDGE LINES.
3. THE EXACT MARKER LIMITS, SPACING, AND COLOR SHOULD BE INCLUDED IN THE PLANS.
4. MARKERS SHOULD NOT BE USED ALONGSIDE CURBS EXCEPT FOR EXTREMELY SHORT SECTIONS OF CURBS WHERE NOT MORE THAN TWO MARKERS WOULD BE INVOLVED.

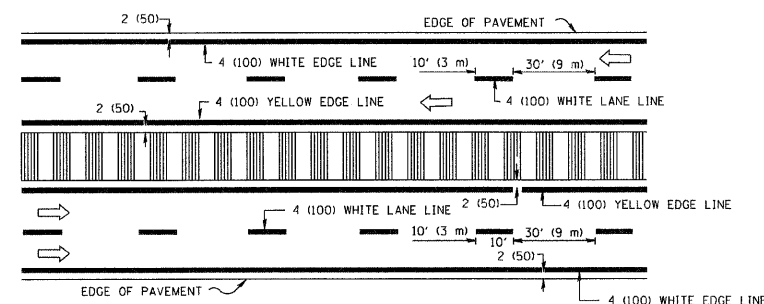
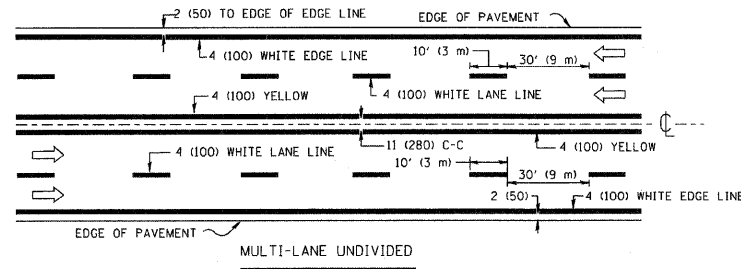
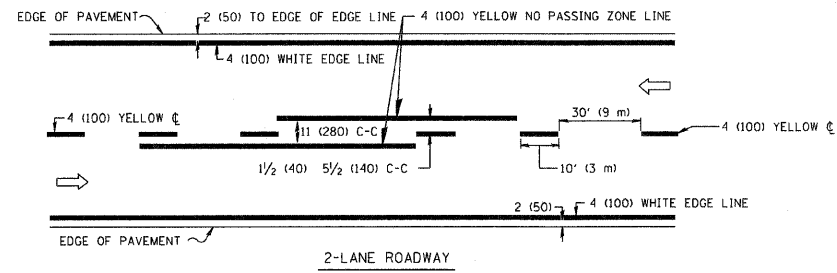


LEFT TURN

* SEE TWO-LANE/TWO-WAY WHERE MARKERS CONTINUE
 ** WHERE THE MEDIAN WIDTH IS 6' (2 m) OR LESS USE TWO-WAY MARKERS.

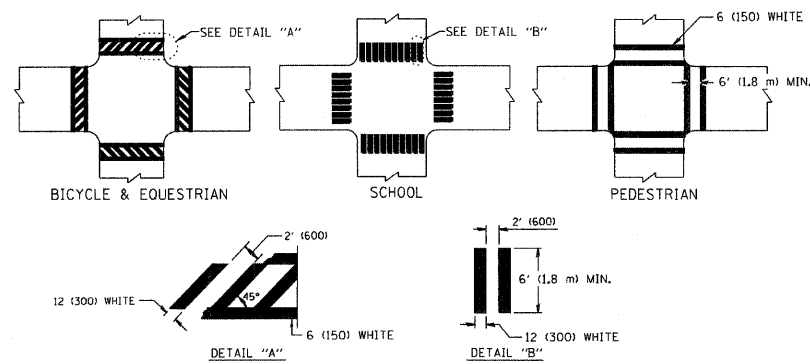
All dimensions are in inches (millimeters) unless otherwise shown.

FILE NAME = W:\dststd\22x34\1c11.dgn	USER NAME = goglionobt	DESIGNED -	REVISED - T, RAMMACHER 09-19-94	STATE OF ILLINOIS DEPARTMENT OF TRANSPORTATION	TYPICAL APPLICATIONS RAISED REFLECTIVE PAVEMENT MARKERS (SNOW-PLOW RESISTANT)			F.A.P. RTE.	SECTION	COUNTY	TOTAL SHEETS	SHEET NO.
	PLOT SCALE = 50,000" / IN.	DRAWN -	REVISED - T, RAMMACHER 03-12-99					330	105 B-3-I	WILL	18	17
PLOT DATE = 1/4/2008	CHECKED -	REVISED - T, RAMMACHER 01-06-00	REVISED -	SCALE: NONE	SHEET NO. 1 OF 1 SHEETS	STA. 446+29 TO STA. 461+23	TC-11 CONTRACT NO. 60D67					
							FED. ROAD DIST. NO. 1 ILLINOIS FED. AID PROJECT					

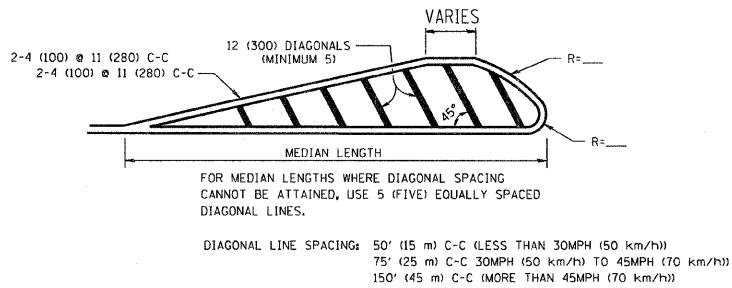
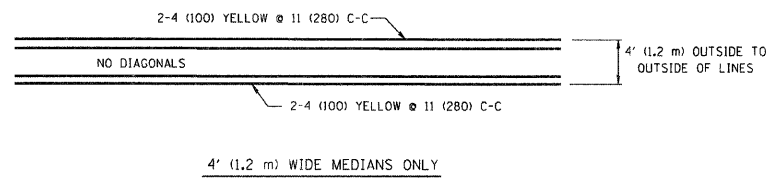


NOTE: MEDIANS WITH BARRIER CURB DO NOT REQUIRE AN EDGE LINE

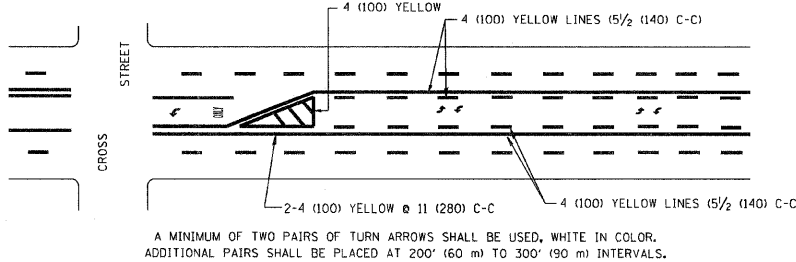
TYPICAL LANE AND EDGE LINE MARKING



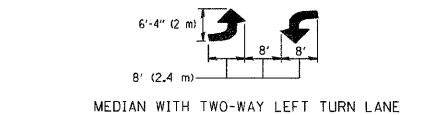
TYPICAL CROSSWALK MARKING



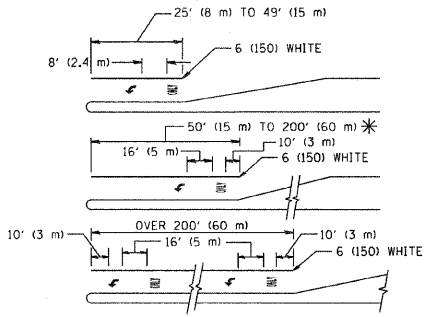
MEDIANS OVER 4' (1.2 m) WIDE



TYPICAL PAINTED MEDIAN MARKING



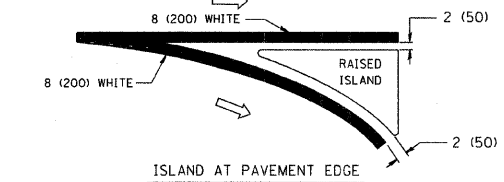
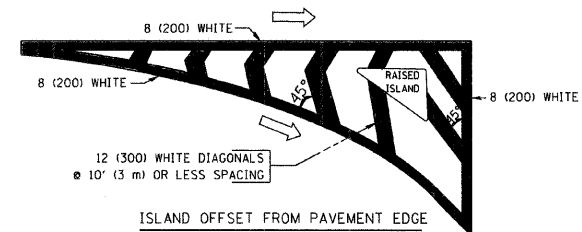
TYPICAL PAINTED MEDIAN MARKING



FULL SIZE LETTERS 8' (2.4 m) AND ARROWS SHALL BE USED.
AREA = 15.6 SQ. FT. (1.5 m²) ONLY AREA = 20.8 SQ. FT. (1.9 m²)
* TURN LANES IN EXCESS OF 400' (120 m) IN LENGTH MAY HAVE AN ADDITIONAL SET OF ARROW - "ONLY" INSTALLED MIDWAY BETWEEN THE OTHER TWO SETS OF ARROW - "ONLY".

TYPICAL LEFT (OR RIGHT) TURN LANE

TYPICAL TURN LANE MARKING



TYPICAL ISLAND MARKING

TYPE OF MARKING	WIDTH OF LINE	PATTERN	COLOR	SPACING / REMARKS
CENTERLINE ON 2 LANE PAVEMENT	4 (100)	SKIP-DASH	YELLOW	10' (3 m) LINE WITH 30' (9 m) SPACE
CENTERLINE ON MULTI-LANE UNDIVIDED PAVEMENT	2 @ 4 (100)	SOLID	YELLOW	11 (280) C-C
NO PASSING ZONE LINES: FOR ONE DIRECTION FOR BOTH DIRECTIONS	4 (100) 2 @ 4 (100)	SOLID SOLID	YELLOW YELLOW	5/2 (140) C-C FROM SKIP-DASH CENTERLINE 11 (280) C-C OMIT SKIP-DASH CENTERLINE BETWEEN
LANE LINES	4 (100) 5 (125) ON FREEWAYS	SKIP-DASH SKIP-DASH	WHITE WHITE	10' (3 m) LINE WITH 30' (9 m) SPACE
DOTTED LINES (EXTENSIONS OF CENTER, LANE OR TURN LANE MARKINGS)	SAME AS LINE BEING EXTENDED	SKIP-DASH	SAME AS LINE BEING EXTENDED	2' (600) LINE WITH 6' (1.8 m) SPACE
EDGE LINES	4 (100)	SOLID	YELLOW-LEFT WHITE-RIGHT	OUTLINE MOUNTABLE MEDIANS IN YELLOW; EDGE LINES ARE NOT USED NEXT TO BARRIER CURB
TURN LANE MARKINGS	6 (150) LINE; FULL SIZE LETTERS & SYMBOLS (8' (2.4m))	SOLID	WHITE	SEE TYPICAL TURN LANE MARKING DETAIL
TWO WAY LEFT TURN MARKING	2 @ 4 (100) EACH DIRECTION 8' (2.4m) LEFT ARROW	SKIP-DASH AND SOLID IN PAIRS	YELLOW WHITE	10' (3 m) LINE WITH 30' (9 m) SPACE FOR SKIP-DASH; 5/2 (140) C-C BETWEEN SOLID LINE AND SKIP-DASH LINE SEE TYPICAL TWO-WAY LEFT TURN MARKING DETAIL
CROSSWALK LINES (PEDESTRIAN) A. DIAGONALS (BIKE & EQUESTRIAN) B. LONGITUDINAL BARS (SCHOOL)	2 @ 6 (150) 12 (300) @ 45° 12 (300) @ 90°	SOLID SOLID SOLID	WHITE WHITE WHITE	NOT LESS THAN 6' (1.8 m) APART 2' (600) APART 2' (600) APART SEE TYPICAL CROSSWALK MARKING DETAILS.
STOP LINES	24 (600)	SOLID	WHITE	PLACE 4' (1.2 m) IN ADVANCE OF AND PARALLEL TO CROSSWALK, IF PRESENT. OTHERWISE, PLACE AT DESIRED STOPPING POINT. PARALLEL TO CROSSROAD CENTERLINE, WHERE POSSIBLE.
PAINTED MEDIANS	2 @ 4 (100) WITH 12 (300) DIAGONALS @ 45° NO DIAGONALS USED FOR 4' (1.2 m) WIDE MEDIANS	SOLID	YELLOW; TWO WAY TRAFFIC WHITE; ONE WAY TRAFFIC	11 (280) C-C FOR THE DOUBLE LINE SEE TYPICAL PAINTED MEDIAN MARKING.
GORE MARKING AND CHANNELIZING LINES	8 (200) WITH 12 (300) DIAGONALS @ 45°	SOLID	WHITE	DIAGONALS: 15' (4.5 m) C-C (LESS THAN 30MPH (50 km/h)) 20' (6 m) C-C 30MPH (50 km/h) TO 45MPH (70 km/h) 30' (9 m) C-C (OVER 45MPH (70 km/h))
RAILROAD CROSSING	24 (600) TRANSVERSE LINES; "RR" IS 6' (1.8 m) LETTERS; 16 (400) LINE FOR "X"	SOLID	WHITE	SEE STATE STANDARD 780001 AREA OF: "R"=3.6 SQ. FT. (0.33 m ²) EACH "X"=54.0 SQ. FT. (5.0 m ²)
SHOULDER DIAGONALS	12 (300) @ 45°	SOLID	WHITE - RIGHT YELLOW - LEFT	50' (15 m) C-C (LESS THAN 30MPH (50 km/h)) 75' (25 m) C-C (30 MPH (50 km/h) TO 45MPH (70 km/h)) 150' (45 m) C-C (OVER 45MPH (70 km/h))

FOR FURTHER DETAILS ON PAVEMENT MARKING REFER TO STANDARD SPECIFICATIONS FOR ROAD AND BRIDGE CONSTRUCTION AND STATE STANDARD 780001.

All dimensions are in inches (millimeters) unless otherwise shown.

FILE NAME = W:\dststd\22x34\to13.dgn	USER NAME = goglienobt	DESIGNED - EVERS	REVISED - T. RAMMACHER 10-27-94
		DRAWN -	REVISED - A. HOUSEH 10-09-96
	PLOT SCALE = 50.000' / IN.	CHECKED -	REVISED - A. HOUSEH 10-17-96
	PLOT DATE = 1/4/2008	DATE - 03-19-90	REVISED - T. RAMMACHER 01-06-00

STATE OF ILLINOIS
DEPARTMENT OF TRANSPORTATION

DISTRICT ONE		F.A.P. RTE.	SECTION	COUNTY	TOTAL SHEETS	SHEET NO.
TYPICAL PAVEMENT MARKINGS		330	105 B-3-I	WILL	18	18
SCALE: NONE		SHEET NO. 1 OF 1 SHEETS		STA. 446+29 TO STA. 461+23	CONTRACT NO. 60D67	
FED. ROAD DIST. NO. 1 (ILLINOIS) FED. AID PROJECT						