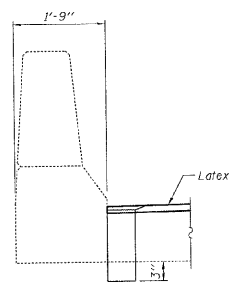
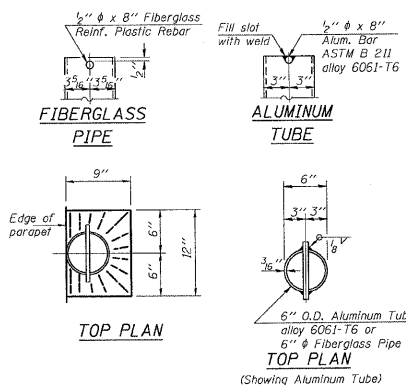


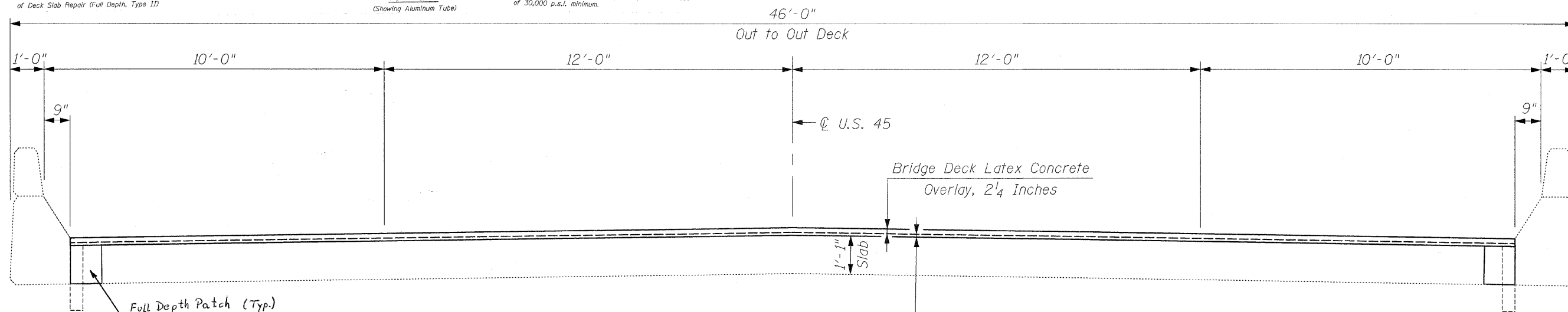
**EXISTING
DECK CROSS SECTION**



SECTION AT PARAPET
Cost of drain is included in the cost of Deck Slab Repair (Full Depth, Type II)



Notes:
The exterior surfaces of the floor drains shall be painted with the finish coat as specified in the special provisions for Cleaning and Painting New Metal Structures. The exterior surfaces of the drains shall be cleaned according to Steel Structures Painting Council's Spec. SSPC-SP1 prior to painting. Fiberglass pipe shall conform to ASTM D 2996, with short-time rupture strength hoop tensile stress of 30,000 p.s.i. minimum.



**PROPOSED
DECK CROSS SECTION**



CHRISTIAN-ROGE & ASSOCIATES, INC.
ENGINEERS / PLANNERS / SURVEYORS
211 W. WACKER DRIVE CHICAGO, IL. 60606
PHONE: (312)372-2023 FAX: (312)372-5274

FILE NAME = deck cross section.sht	USER NAME = IDOT	DESIGNED - B.N.S.	REVISED -
		DRAWN - D.L./R.E.S./F.M.	REVISED -
		CHECKED - B.N.S./J.C.N.	REVISED -
		DATE - JANUARY 12, 2009	REVISED -

**STATE OF ILLINOIS
DEPARTMENT OF TRANSPORTATION**

DECK CROSS SECTION U.S. 45 OVER FORKED CREEK		S.N. 099-0243	
SCALE:	SHEET NO. S2 OF S3 SHEETS	STA.	TO STA.

F.A.P. RTE.	SECTION	COUNTY	TOTAL SHEETS	SHEET NO.
330	105 B-3-1	WILL	18	12
CONTRACT NO. 60D67				

FED. ROAD DIST. NO. 1 | ILLINOIS FED. AID PROJECT