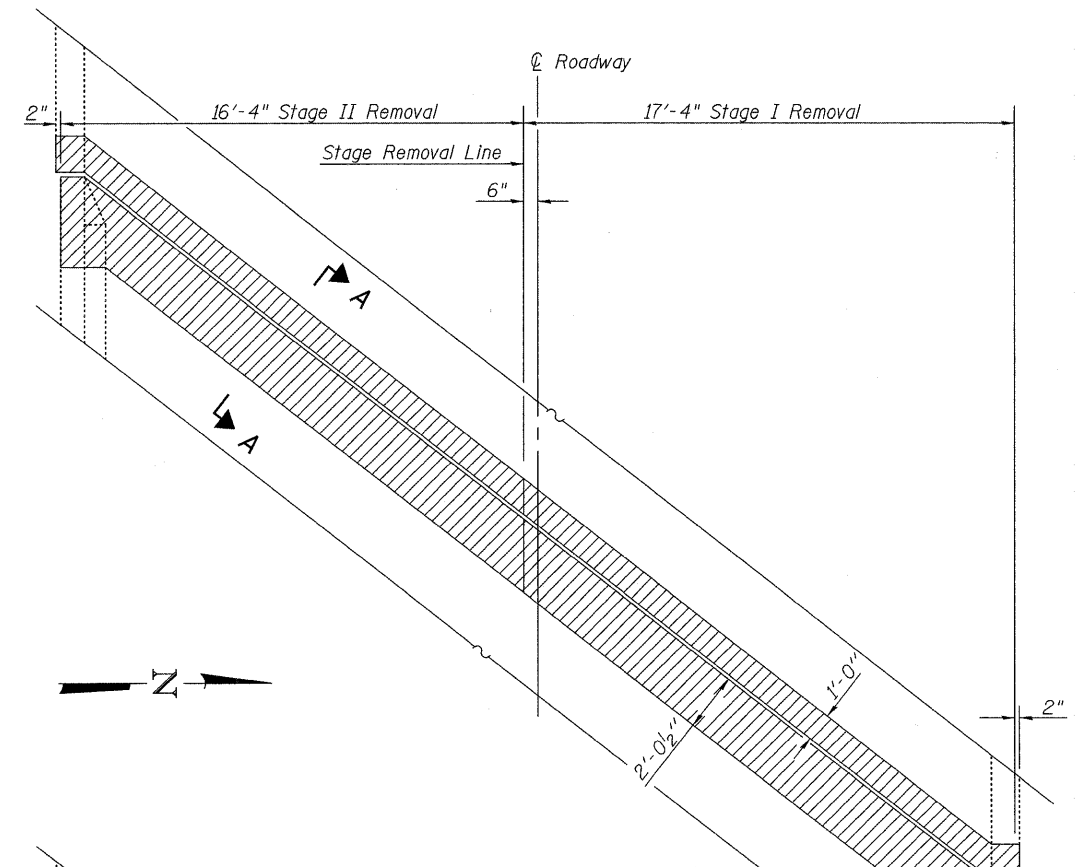
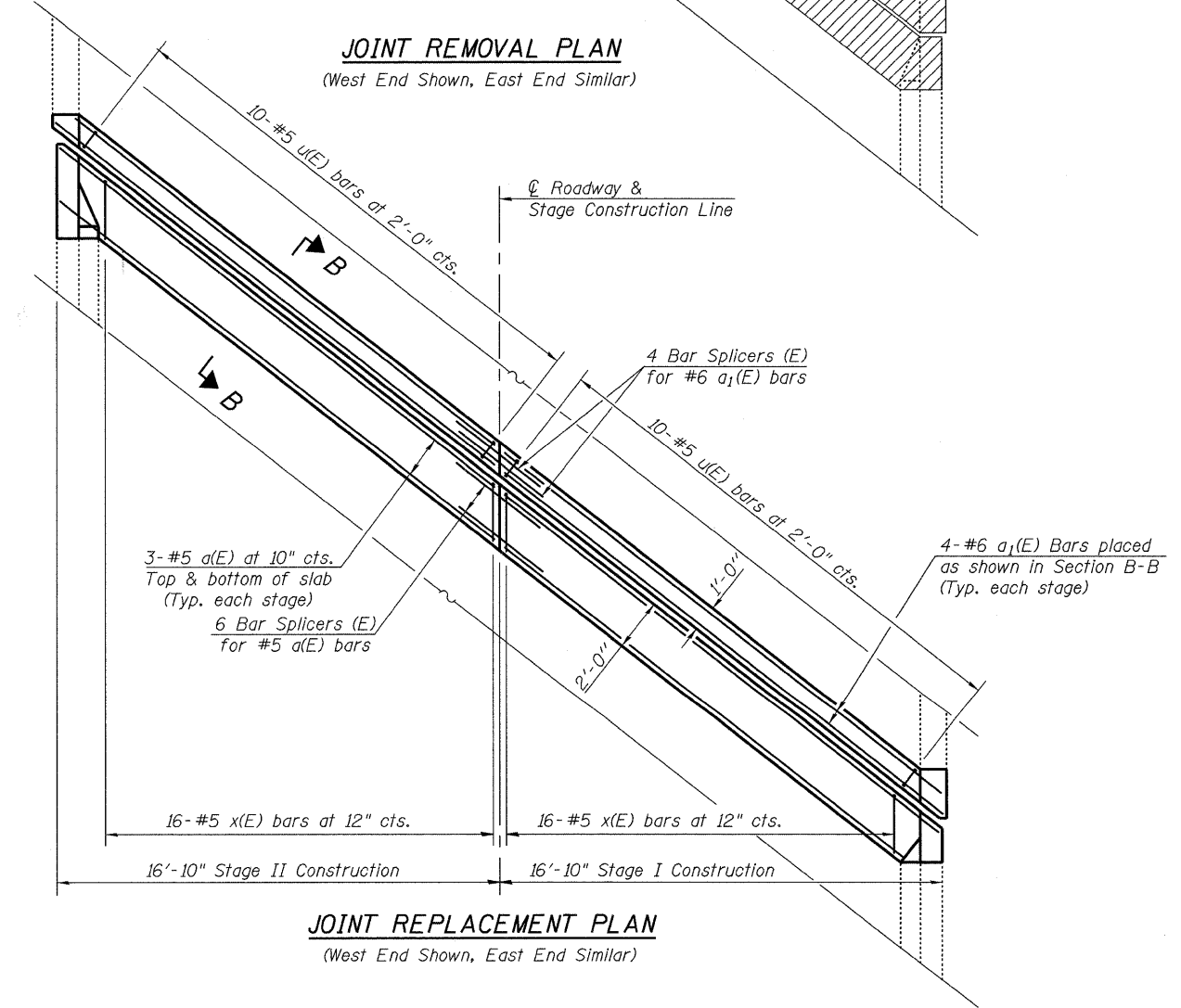


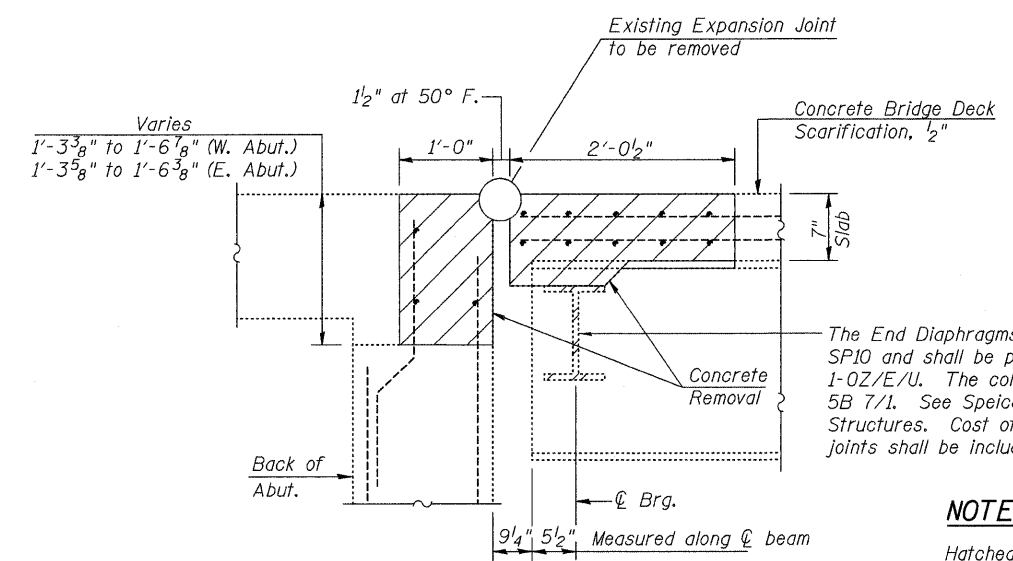
Contract #60D65



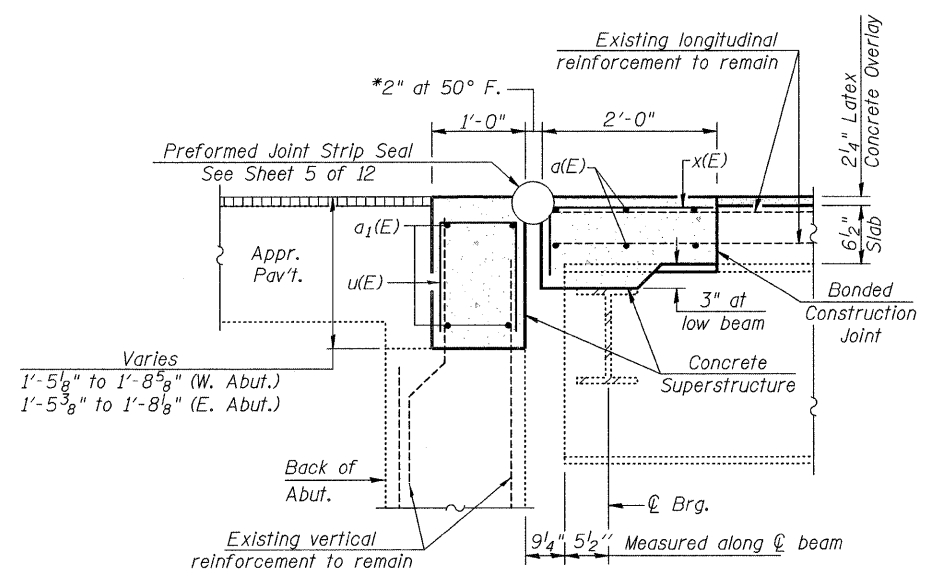
JOINT REMOVAL PLAN
(West End Shown, East End Similar)



JOINT REPLACEMENT PLAN
(West End Shown, East End Similar)

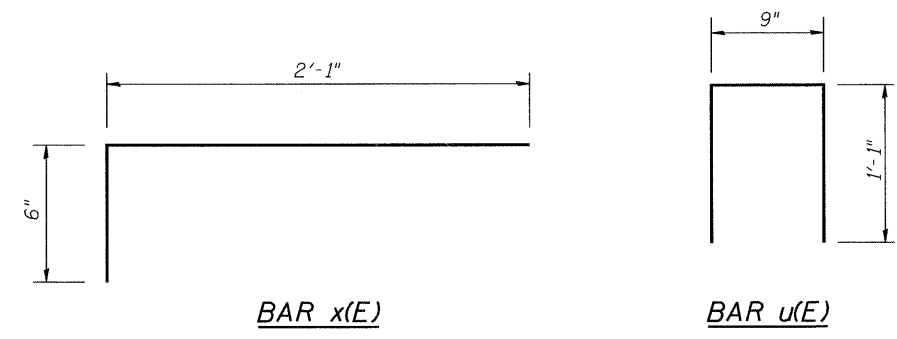


SECTION A-A
(All dimensions are at right L's)



SECTION B-B
(All dimensions are at right L's)

*See sheet 5 of 12 for Notes.



NOTES

Hatched areas indicate concrete sections to be removed. Care shall be exercised by the contractor during and following Concrete Removal operations to ensure that the existing rebar remaining in place are not damaged. All existing reinforcement to be incorporated into new construction shall be blast-cleaned, straightened, and properly positioned prior to concrete placement. Any reinforcement damaged during Concrete Removal shall be repaired or replaced using an approved Bar Splicer or Mechanical System. Cost included with Concrete Removal.

Existing reinforcement bars that are parallel to the expansion joint shall be removed.

Removal of the existing expansion joints will not be paid for separately, but shall be included with the cost of Concrete Removal.

BILL OF MATERIAL

Bar	No.	Size	Length	Shape
a(E)	24	#5	20'-6"	—
a1(E)	16	#6	20'-6"	—
d(E)	12	#5	6'-9"	┌
d1(E)	12	#5	3'-6"	┌
d2(E)	6	#4	5'-3"	┌
x(E)	64	#5	2'-7"	┌
u(E)	40	#5	2'-11"	┌
Concrete Removal			Cu. Yd.	11.6
Reinforcement Bars, Epoxy Coated			Pound	1450
Concrete Superstructure			Cu. Yd.	12.7
Protective Coat			Sq. Yd.	34
Bar Splicers			Each	20

rjngroup
Excellence through Ownership
200 West Front Street
Wheaton, IL 60187

ILLINOIS DEPARTMENT OF TRANSPORTATION
EXPANSION JOINT REHABILITATION
AT DECK
NORTH PEOTONE ROAD OVER I-57
FAI RTE 57 SECTION 99-2HB-1-I-2
WILL COUNTY
STATION 1035+6.40
STRUCTURE NO. 099-0162
DATE: 1-14-2009
DRAWN BY LM
CHECKED BY WJV