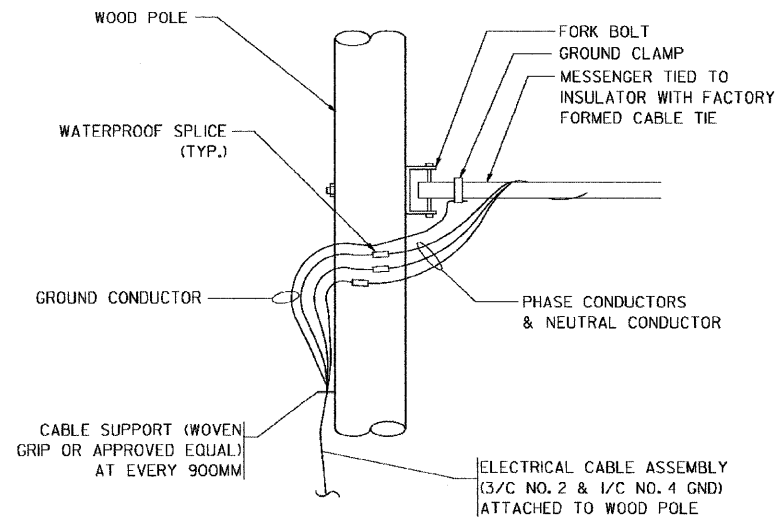
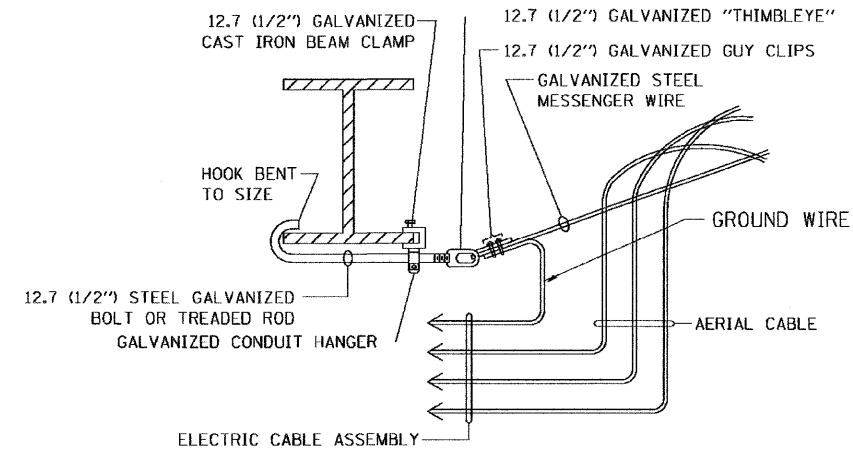


F.A.I. RTE.	SECTION	COUNTY	TOTAL SHEETS	SHEET NO.
STA.	TO STA.			
FED. ROAD DIST. NO. 1	ILLINOIS		FED. AID PROJECT	



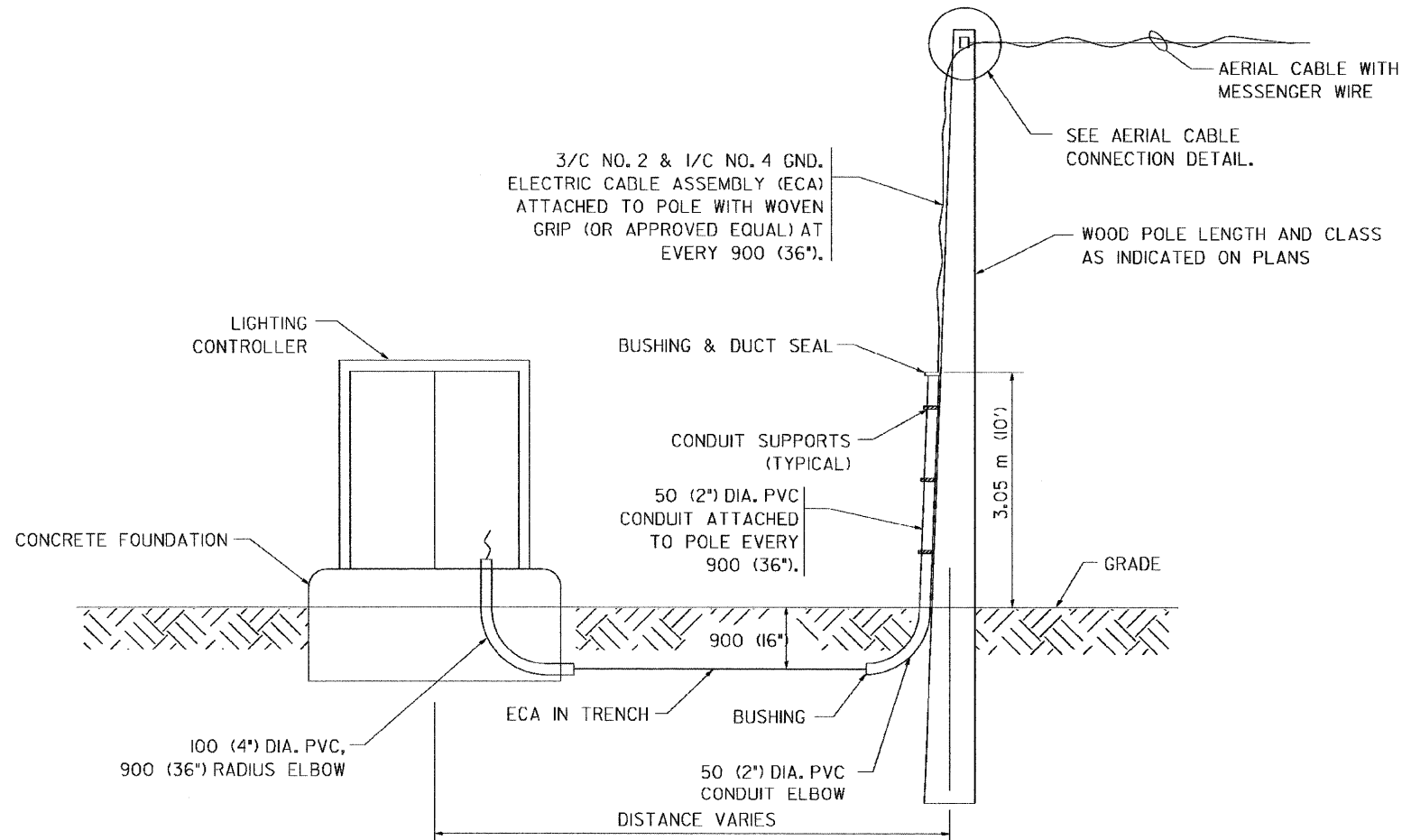
**AERIAL CABLE CONNECTION DETAIL**  
N.T.S.



**AERIAL CABLE ATTACHED TO STRUCTURE**  
NOT TO SCALE

**NOTES:**

1. ALL DIMENSIONS IN MILLIMETERS (INCHES) UNLESS OTHERWISE INDICATED.
2. SEE PROPOSED LIGHTING PLAN FOR CONDUIT, CABLE AND ROUTING.
3. THE CONTRACTOR SHALL PROVIDE INTERMEDIATE SUPPORTS TO MAINTAIN MINIMUM CLEARANCES. REFER TO AERIAL CABLE ATTACHED TO STRUCTURE DETAIL.
4. COST OF SPLICES AND MOUNTING HARDWARE SHALL BE INCLUDED IN THE UNIT PRICE FOR AERIAL CABLE.



**WOOD POLE TO LIGHTING CONTROLLER WIRING CONNECTION DETAIL**  
N.T.S.

REVISIONS	
NAME	DATE

ILLINOIS DEPARTMENT OF TRANSPORTATION

**TEMPORARY AERIAL CABLE INSTALLATION**

SCALE: NONE  
DATE 05/21/2003

DRAWN BY  
CHECKED BY

**BE-801**

12/7/2007 12:25:25 pm \\server-077880-077880-077880-077880\cadd\vol\base\sh\_t.peotone\BEB801.DETAILS.sh\_t  
 PLOT NAME: \\server-077880-077880-077880-077880\cadd\vol\base\sh\_t.peotone\BEB801.DETAILS.sh\_t  
 PLOT SCALE: 1:10000  
 USER NAME: Millennium Engineering  
 MODEL:

05/21/2003

**MILLENNIA ENGINEERING**  
 200 22ND Street, Suite 216, Lombard, IL 60148  
 630.705.8110 voice, 630.839.2566 fax  
 www.millenniacog.com

DESIGNED - TVN	REVISED -
DRAWN - TVN	REVISED -
CHECKED - RPD	REVISED -
DATE - 12/7/2007	REVISED -

**STATE OF ILLINOIS DEPARTMENT OF TRANSPORTATION**

**FAI 57/1-57 AT N. PEOTONE/JOLIET RD**

**DISTRICT ONE STANDARD DETAILS BE-801**

SCALE: SHEET NO. 801 OF SHEETS STA. TO STA.

F.A.I. RTE.	SECTION	COUNTY	TOTAL SHEETS	SHEET NO.
57	99-2H-1-1-2	WILL	33	12
FED. ROAD DIST. NO. 1 ILLINOIS FED. AID PROJECT			CONTRACT NO. 60D65	