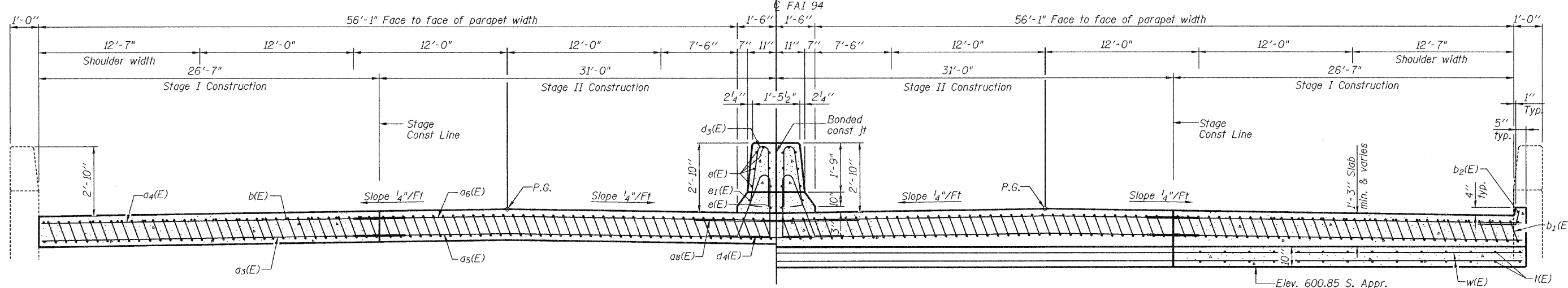


STATE OF ILLINOIS
DEPARTMENT OF TRANSPORTATION



NEAR ABUTMENT

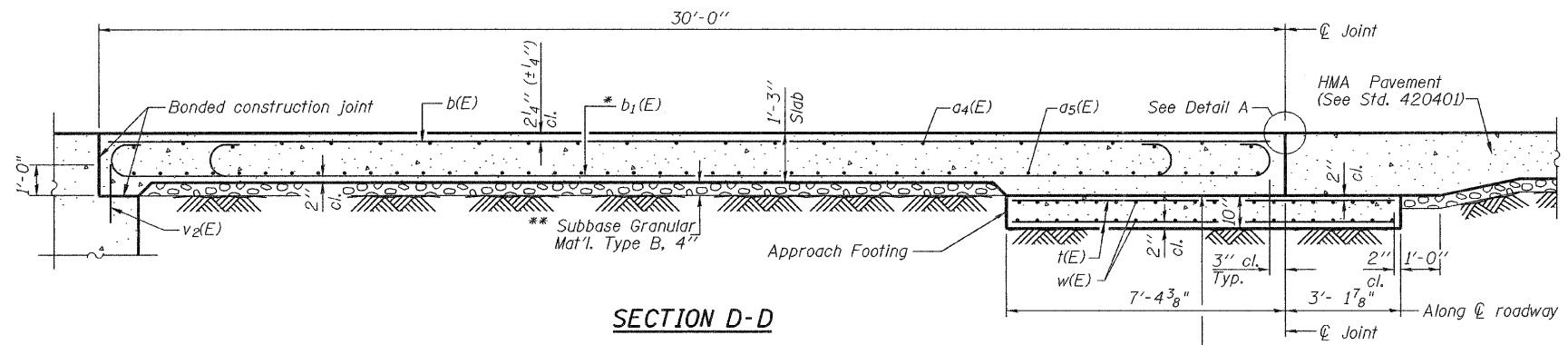
SECTION C-C
(See Plan for dimensions not shown)

AT APPROACH FOOTING

Elev. 600.85 S. Appr.
Elev. 609.75 N. Appr.
(Level out to out)

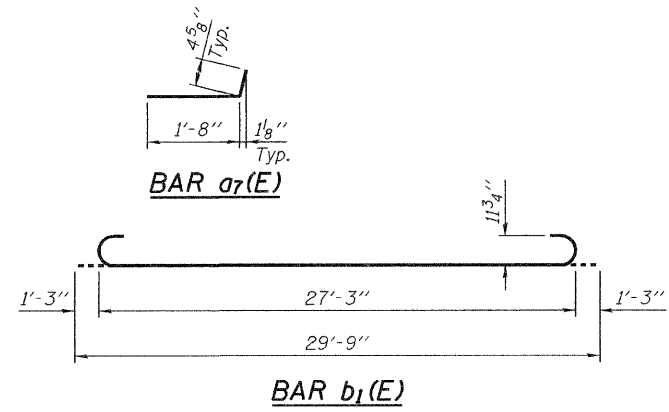
TWO APPROACHES
BILL OF MATERIAL

Bar	No.	Size	Length	Shape	
a3(E)	184	#5	27'-7"	—	
a4(E)	100	#4	27'-7"	—	
a5(E)	184	#5	33'-8"	—	
a6(E)	100	#4	33'-8"	—	
a7(E)	60	#4	2'-1"	—	
a8(E)	48	#6	6'-0"	—	
b(E)	230	#4	29'-8"	—	
b1(E)	550	#9	29'-9"	—	
b2(E)	12	#4	18'-0"	—	
d3(E)	136	#5	5'-7"	—	
d4(E)	136	#5	7'-11"	—	
e(E)	32	#4	29'-8"	—	
e1(E)	4	#8	29'-8"	—	
t(E)	464	#4	10'-3"	—	
v2(E)	242	#5	2'-0"	—	
w(E)	160	#5	27'-7"	—	
w1(E)	160	#5	33'-8"	—	
Concrete Superstructure				Cu. Yd.	365.0
Concrete Structures				Cu. Yd.	74.2
Reinforcement Bars, Epoxy Coated				Pound	93,470
Structural Repair of Concrete (Depth Greater Than 5")				Sq. Ft.	4.0



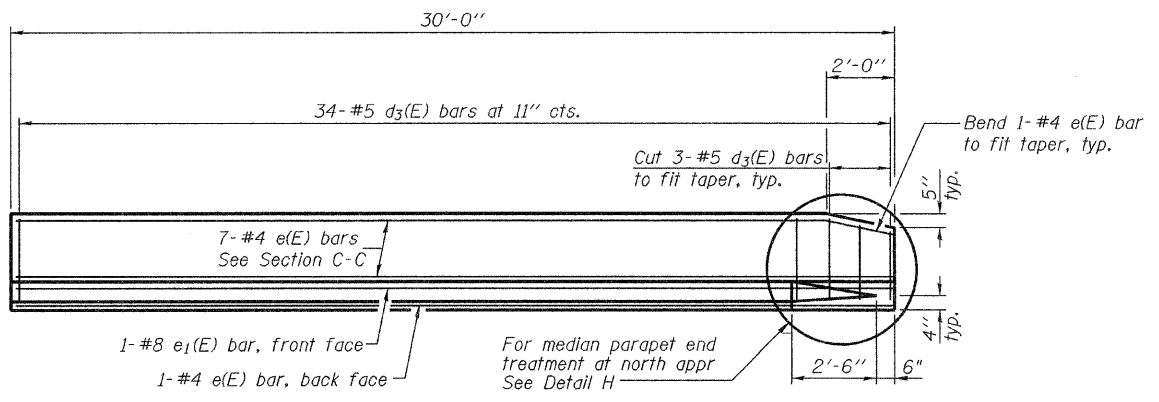
SECTION D-D

* Tilt #9 b1(E) bars as required to maintain clearance.
** Cost included with Concrete Superstructure.

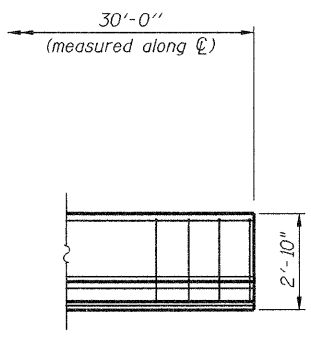


BAR a7(E)

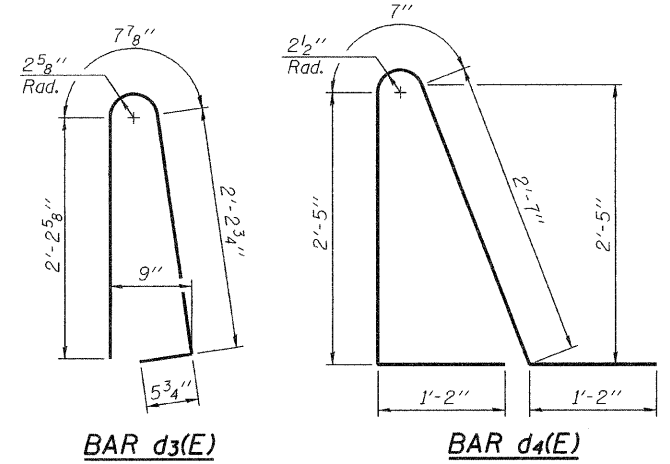
BAR b1(E)



VIEW E-E



DETAIL H



BAR d3(E)

BAR d4(E)

(Sheet 2 of 2)
BRIDGE APPROACH SLAB DETAILS
BISHOP FORD EXPRESSWAY (I-94)
LITTLE CALUMET RIVER
COOK COUNTY
STATION
STRUCTURE NUMBER 016-0163

Notes:
See sheet 16 of 17 for Detail A and View B-B.
Approach slab and parapet concrete shall be paid for as Concrete Superstructure.
Approach footing concrete shall be paid for as Concrete Structures.
Reinforcement shall be paid for as Reinforcement Bars, Epoxy Coated.
The approach footing maximum applied service bearing pressure (Qmax) = 2.0 ksf.
For bar splicer details, see sheet 10 of 17.
Cost of excavation for approach footing included with Concrete Structures.

DESIGNED -
CHECKED -
DRAWN -
CHECKED -

HOMER L. CHASTAIN & ASSOCIATES, LLP
CONSULTING ENGINEERS
DECATUR (217) 422-8544
CHICAGO (773) 714-0050
ROCKFORD (815) 489-0050
184-001397

SHEET NO. 17 OF 17 SHEETS	F.A.I. RTE. 94	SECTION (0405,ETC,42-7&0707)RS-11	COUNTY COOK	TOTAL SHEETS 133	SHEET NO. 103
	BISHOP FORD EXPRESSWAY (I-94)		CONTRACT NO. 60D21		
FED. ROAD DIST. NO.		ILLINOIS FED. AID PROJECT			