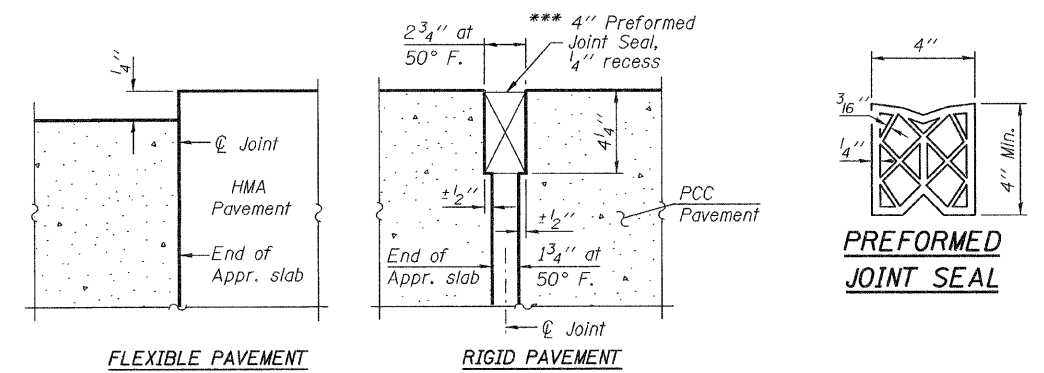
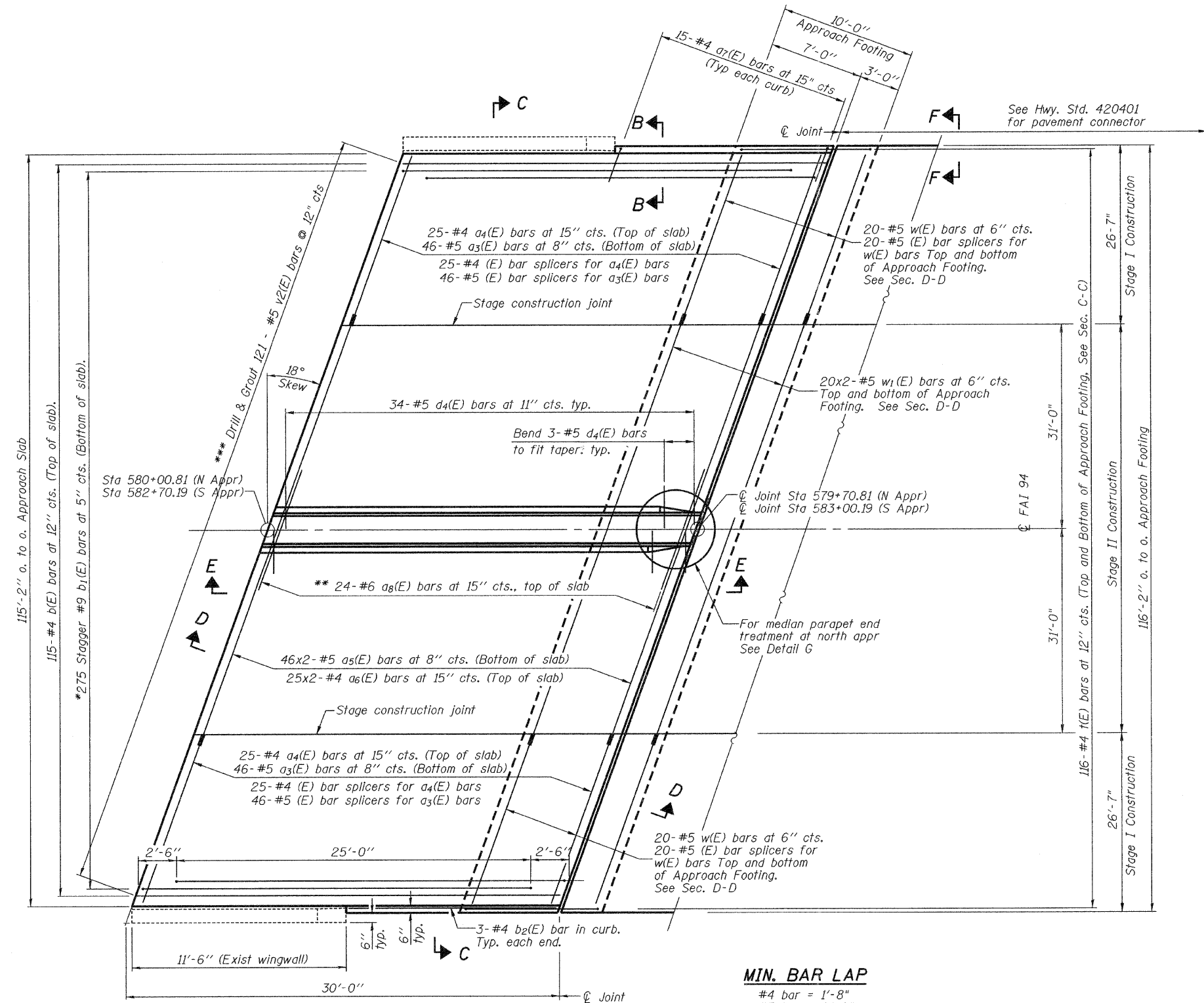
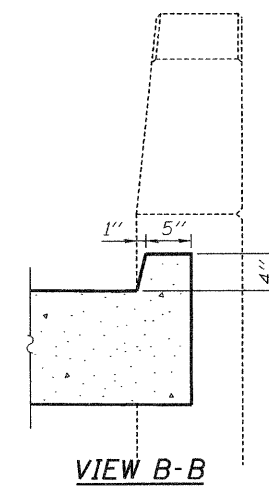


STATE OF ILLINOIS
DEPARTMENT OF TRANSPORTATION

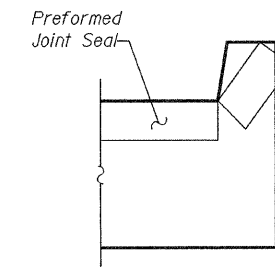
*** Cost Included with Concrete Superstructure.



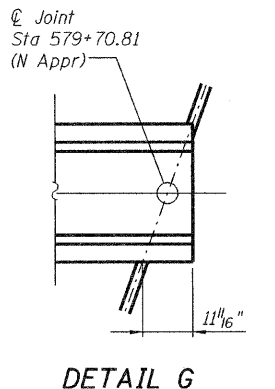
DETAIL A



VIEW B-B



VIEW F-F



DETAIL G

Angle Preformed Joint Seal at 45° at curbs when req'd for drainage.

PLAN

MIN. BAR LAP

#4 bar = 1'-8"
#5 bar = 2'-2"

DESIGNED -	
CHECKED -	
DRAWN -	
CHECKED -	

HOMER L. CHASTAIN & ASSOCIATES, LLP
CONSULTING ENGINEERS
DECATUR (217) 422-8544
CHICAGO (773) 714-0050
ROCKFORD (815) 489-0050
184-001397

* Tilt #9_{1b} (E) bars as required to maintain clearance.
** Alternate with a(E) bars, typ. median parapet.

*** Bars shall be drilled and epoxy grouted according to Article 584 of the Standard Specifications.

Notes:

See sheet 17 of 17 for Sections C-C & D-D and View E-E. a₃(E) thru a₈(E), and w(E) bar spacings measured perpendicular to C Rdwy.

(Sheet 1 of 2)
BRIDGE APPROACH SLAB DETAILS
BISHOP FORD EXPRESSWAY (I-94)
LITTLE CALUMET RIVER
COOK COUNTY
STATION
STRUCTURE NUMBER 016-0163

SHEET NO. 16 OF 17 SHEETS	F.A.I. RTE.	SECTION	COUNTY	TOTAL SHEETS	SHEET NO.
	94	(0405,ETC,42-7&07)RS-11	COOK	133	102
BISHOP FORD EXPRESSWAY (I-94)			CONTRACT NO. 60D21		
FED. ROAD DIST. NO. _____			ILLINOIS FED. AID PROJECT		