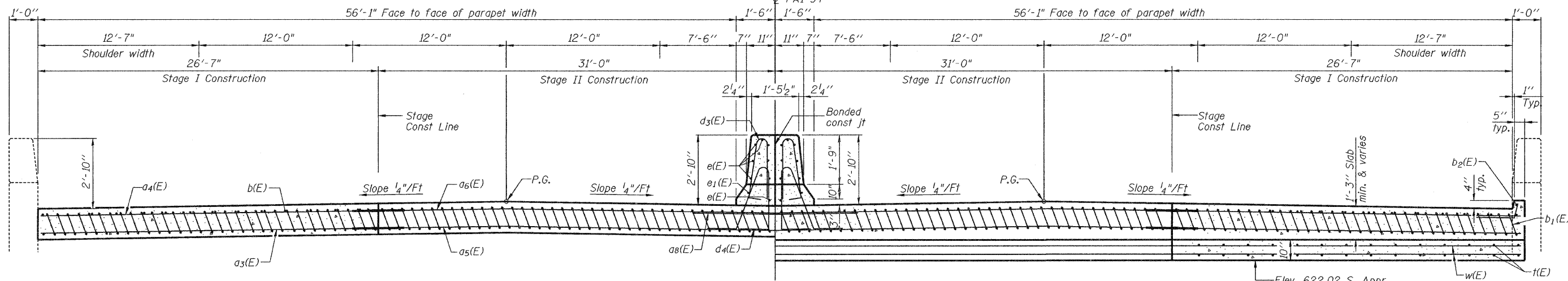


STATE OF ILLINOIS  
DEPARTMENT OF TRANSPORTATION

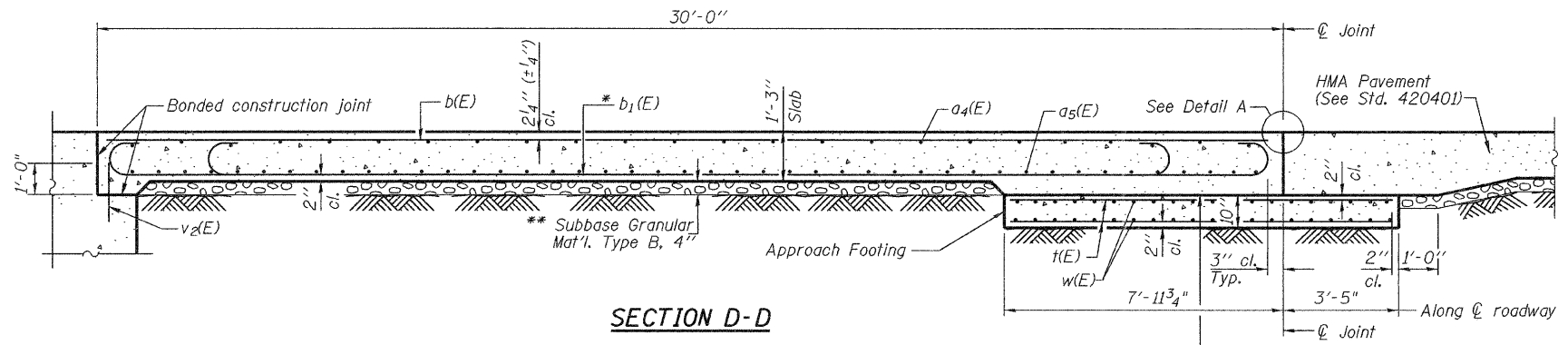


NEAR ABUTMENT SECTION C-C AT APPROACH FOOTING  
(See Plan for dimensions not shown)

Elev. 622.02 S. Appr.  
Elev. 622.02 N. Appr.  
(Level out to out)

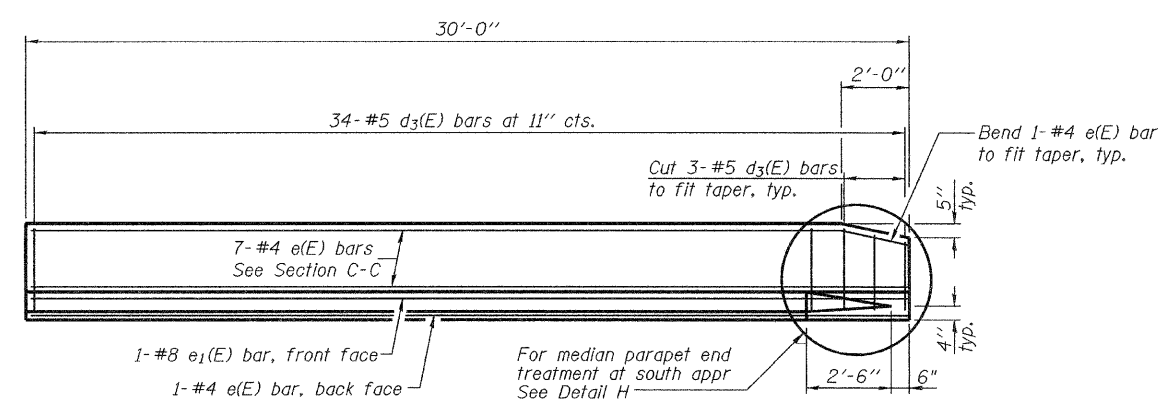
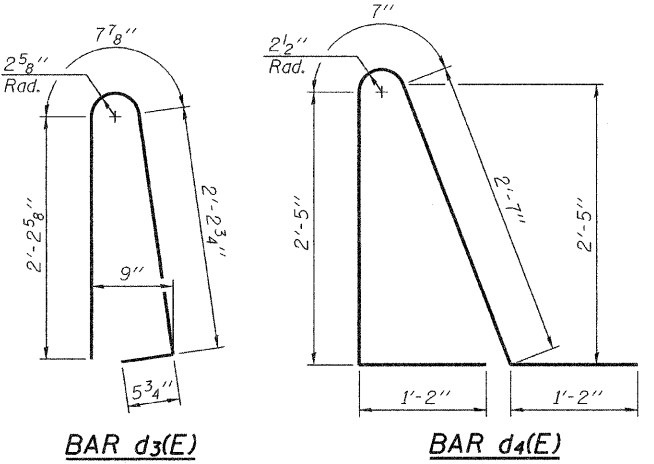
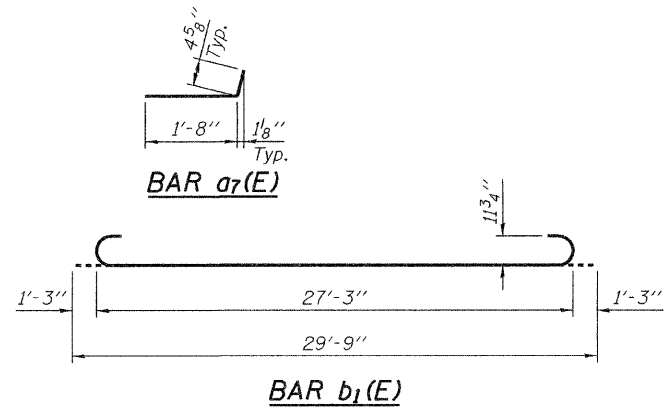
TWO APPROACHES  
BILL OF MATERIAL

Bar	No.	Size	Length	Shape
a3(E)	184	#5	29'-10"	—
a4(E)	100	#4	29'-10"	—
a5(E)	184	#5	36'-4"	—
a6(E)	100	#4	36'-4"	—
a7(E)	60	#4	2'-1"	—
a8(E)	48	#6	6'-0"	—
b(E)	230	#4	29'-8"	—
b1(E)	550	#9	29'-9"	—
b2(E)	12	#4	18'-0"	—
d3(E)	136	#5	5'-7"	—
d4(E)	136	#5	7'-11"	—
e(E)	32	#4	29'-8"	—
e1(E)	4	#8	29'-8"	—
f(E)	464	#4	11'-0"	—
v2(E)	260	#5	2'-0"	—
w(E)	160	#5	29'-10"	—
w1(E)	160	#5	36'-4"	—
Concrete Superstructure			Cu. Yd.	366.8
Concrete Structures			Cu. Yd.	80.0
Reinforcement Bars, Epoxy Coated			Pound	95,830
Structural Repair of Concrete (Depth Greater Than 5")			Sq. Ft.	4.0

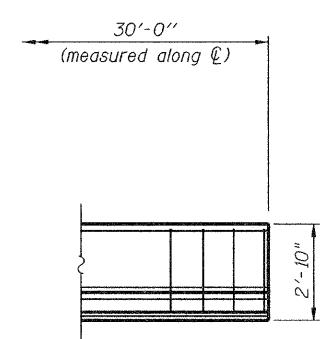


SECTION D-D

\* Tilt #9 b1(E) bars as required to maintain clearance.  
\*\* Cost included with Concrete Superstructure.



VIEW E-E



DETAIL H

Notes:  
See sheet 16 of 17 for Detail A and View B-B.  
Approach slab and parapet concrete shall be paid for as Concrete Superstructure.  
Approach footing concrete shall be paid for as Concrete Structures.  
Reinforcement shall be paid for as Reinforcement Bars, Epoxy Coated.  
The approach footing maximum applied service bearing pressure (Qmax) = 2.0 ksf.  
For bar splicer details, see sheet 10 of 17.  
Cost of excavation for approach footing included with Concrete Structures.

(Sheet 2 of 2)  
BRIDGE APPROACH SLAB DETAILS  
BISHOP FORD EXPRESSWAY (I-94)  
GREENWOOD AVENUE  
COOK COUNTY  
STATION  
STRUCTURE NUMBER 016-0162

DESIGNED -
CHECKED -
DRAWN - R KING
CHECKED -

**HOMER L. CHASTAIN & ASSOCIATES, LLP**  
CONSULTING ENGINEERS  
DECATUR (217) 422-8544  
CHICAGO (773) 714-0050  
ROCKFORD (815) 489-0050  
184-001397

SHEET NO. 17	F.A.I. RTE. 94	SECTION (0405,ETC,42-7&0707)RS-11	COUNTY COOK	TOTAL SHEETS 133	SHEET NO. 86
OF 17 SHEETS	BISHOP FORD EXPRESSWAY (I-94)		CONTRACT NO. 60D21		
FED. ROAD DIST. NO.		ILLINOIS FED. AID PROJECT			