

STATE OF ILLINOIS
DEPARTMENT OF TRANSPORTATION

EAST CURB LINE

Location	Station	Offset	Theoretical Grade Elevations
End at N Abut	569+65.17	57.58	624.58
A	569+55.17	57.58	624.54
B	569+45.17	57.58	624.50
End of North appr pavement	569+35.17	57.58	624.45

EAST MEDIAN CURB LINE

Location	Station	Offset	Theoretical Grade Elevations
End at N Abut	569+34.56	1.50	624.81
A	569+24.56	1.50	624.76
B	569+14.56	1.50	624.71
End of North appr pavement	569+04.56	1.50	624.65

PG EASTBOUND LANES

Location	Station	Offset	Theoretical Grade Elevations
End at N Abut	569+22.28	-21.00	625.15
A	569+12.28	-21.00	625.10
B	569+02.28	-21.00	625.05
End of North appr pavement	568+92.28	-21.00	624.99

PG WESTBOUND LANES

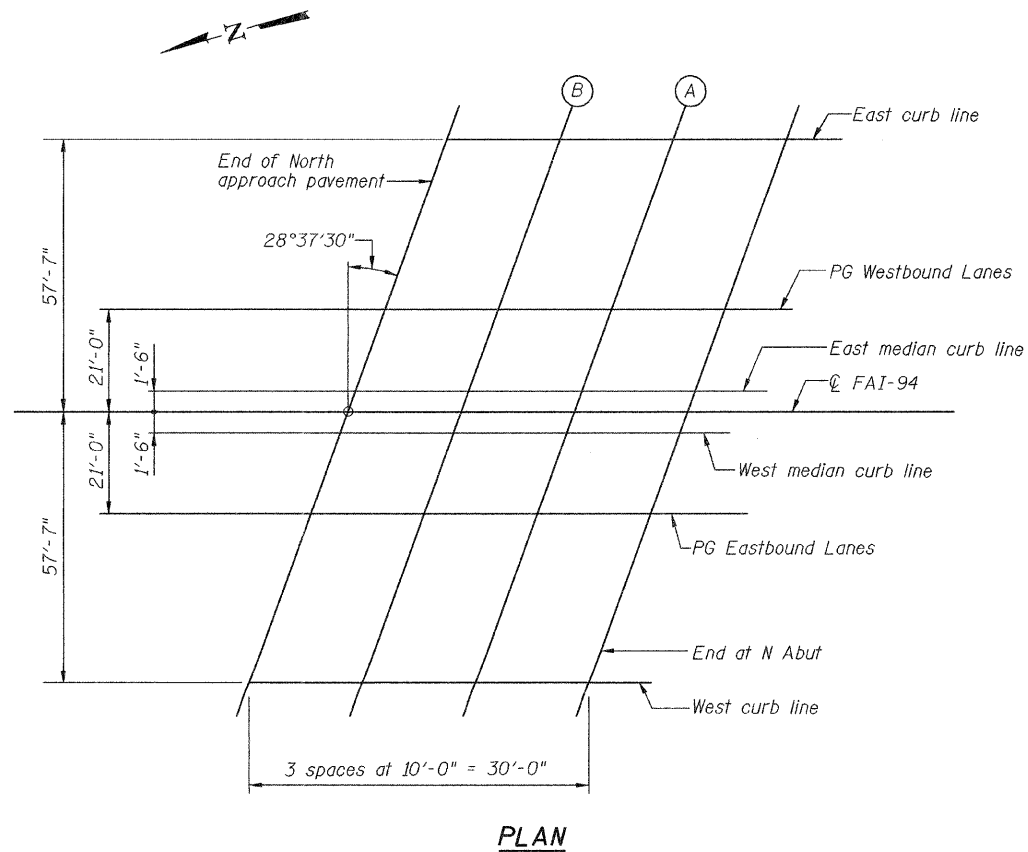
Location	Station	Offset	Theoretical Grade Elevations
End at N Abut	569+45.20	21.00	625.26
A	569+35.20	21.00	625.21
B	569+25.20	21.00	625.17
End of North appr pavement	569+15.20	21.00	625.12

WEST MEDIAN CURB LINE

Location	Station	Offset	Theoretical Grade Elevations
End at N Abut	569+32.92	-1.50	624.80
A	569+22.92	-1.50	624.75
B	569+12.92	-1.50	624.70
End of North appr pavement	569+02.92	-1.50	624.64

WEST CURB LINE

Location	Station	Offset	Theoretical Grade Elevations
End at N Abut	569+02.31	-57.58	624.28
A	568+92.31	-57.58	624.23
B	568+82.31	-57.58	624.17
End of North appr pavement	568+72.31	-57.58	624.10



TOP OF NORTH APPROACH
SLAB ELEVATIONS
BISHOP FORD EXPRESSWAY (I-94)
GREENWOOD AVENUE
COOK COUNTY
STATION
STRUCTURE NUMBER 016-0162

DESIGNED -	
CHECKED -	
DRAWN -	R KING
CHECKED -	
E-AS	

**HOMER L.
CHASTAIN
& ASSOCIATES, LLP**
CONSULTING ENGINEERS
DECATUR (217) 422-8544
CHICAGO (773) 714-0050
ROCKFORD (815) 489-0050
184-001397

5-16-08

SHEET NO. 14 OF 17 SHEETS	F.A.I. RTE.	SECTION	COUNTY	TOTAL SHEETS	SHEET NO.
	94	(0405,ETC,42-7&0707)RS-11	COOK	133	83
BISHOP FORD EXPRESSWAY (I-94)			CONTRACT NO. 60D21		
FED. ROAD DIST. NO. - ILLINOIS			FED. AID PROJECT		