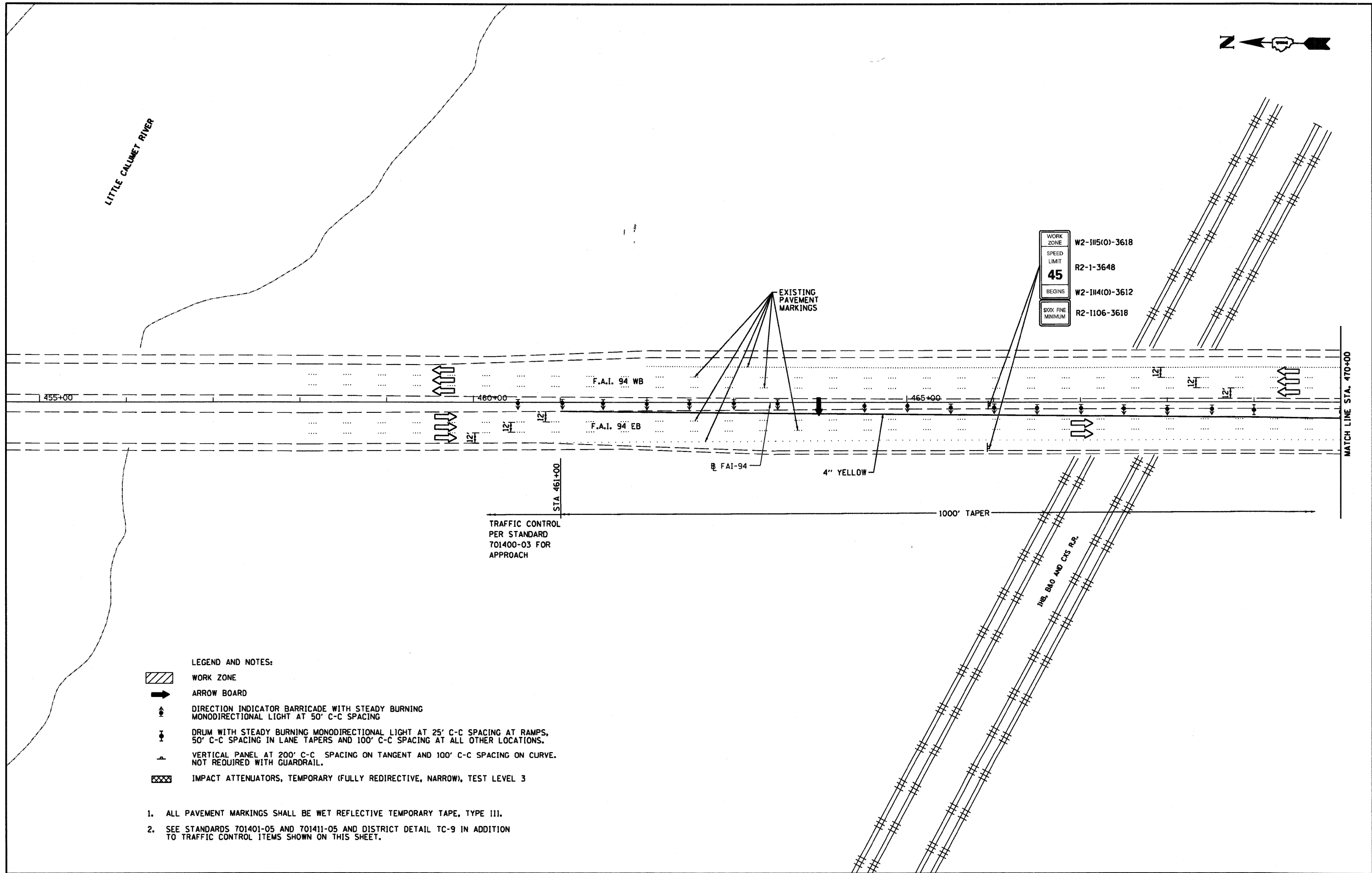




LITTLE CALUMET RIVER



- LEGEND AND NOTES:**
- WORK ZONE
 - ARROW BOARD
 - DIRECTION INDICATOR BARRICADE WITH STEADY BURNING MONODIRECTIONAL LIGHT AT 50' C-C SPACING
 - DRUM WITH STEADY BURNING MONODIRECTIONAL LIGHT AT 25' C-C SPACING AT RAMP, 50' C-C SPACING IN LANE TAPERS AND 100' C-C SPACING AT ALL OTHER LOCATIONS.
 - VERTICAL PANEL AT 200' C-C SPACING ON TANGENT AND 100' C-C SPACING ON CURVE. NOT REQUIRED WITH GUARDRAIL.
 - IMPACT ATTENUATORS, TEMPORARY (FULLY REDIRECTIVE, NARROW), TEST LEVEL 3

1. ALL PAVEMENT MARKINGS SHALL BE WET REFLECTIVE TEMPORARY TAPE, TYPE III.
2. SEE STANDARDS 701401-05 AND 701411-05 AND DISTRICT DETAIL TC-9 IN ADDITION TO TRAFFIC CONTROL ITEMS SHOWN ON THIS SHEET.

FILE NAME =
D:\60021-044-STAGE.PLAN.STG2.dgn

USER NAME = dwozniarski	DESIGNED -	REVISED -
	DRAWN - DMW	REVISED -
PLOT SCALE = 100.00' / IN.	CHECKED -	REVISED -
PLOT DATE = 2/5/2009	DATE - 2/5/2009	REVISED -

**STATE OF ILLINOIS
DEPARTMENT OF TRANSPORTATION**

**BISHOP FORD EXPRESSWAY (I-94)
SUGGESTED MAINTENANCE OF TRAFFIC - STAGE II PLAN**

SCALE: 1" = 50' SHEET NO. 16 OF 24 SHEETS STA. 455+00 TO STA. 470+00

F.A.I. RTE.	SECTION	COUNTY	TOTAL SHEETS	SHEET NO.
94	(0405,ETC,42-T&0707)RS-11	COOK	133	44
CONTRACT NO. 60021			FED. ROAD DIST. NO. [ILLINOIS] FED. AID PROJECT	