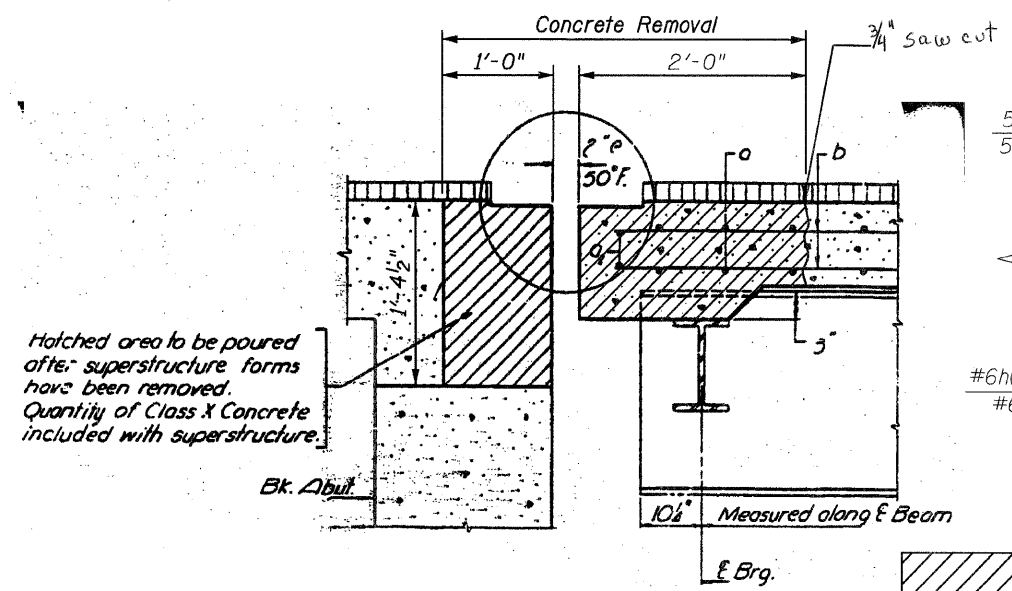


F.A.P. RTE.	SECTION	COUNTY	TOTAL SHEETS	SHEET NO.
607	13 B-I-1	WILL	16	10
STA.		TO STA.		
FED. ROAD DIST. NO.		ILLINOIS	FED. AID PROJECT	

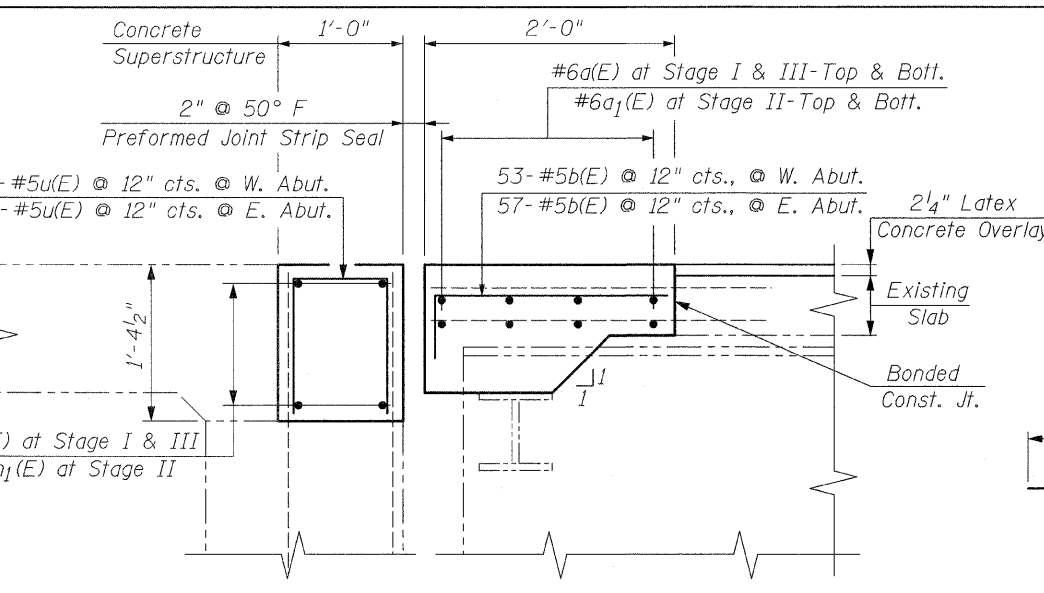
CONTRACT NO. 60C89

**BILL OF MATERIAL
(FOR W. & E. ABUTMENTS)**

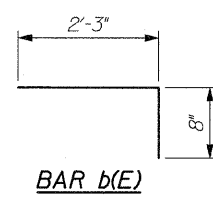
Bar	No.	Size	Length	Shape
a(E)	32	#6	20'-10"	—
a ₁ (E)	16	#6	15'-5"	—
b(E)	110	#5	2'-11"	┌
d(E)	12	#4	4'-3"	└
d ₁ (E)	12	#5	3'-5"	└
d ₂ (E)	8	#5	2'-0"	□
h(E)	16	#6	20'-4"	—
h ₁ (E)	8	#6	15'-5"	—
u(E)	106	#5	3'-0"	□
Reinforcement Bars, Epoxy Coated		Lb.	2,810	
Concrete Removal		Cu. Yd.	12.8	
Concrete Superstructure		Cu. Yd.	12.8	
Bar Splicers		Each	48	
Preformed Joint Strip Seal		Foot	107	



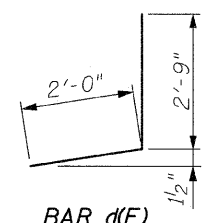
**SECTION AT W. & E. ABUTMENTS
(EXISTING)**



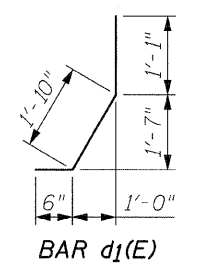
**SECTION THRU ABUTMENTS (at right angles)
(PROPOSED)**



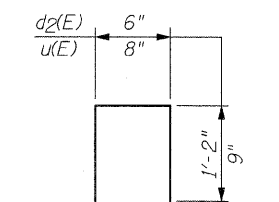
BAR b(E)



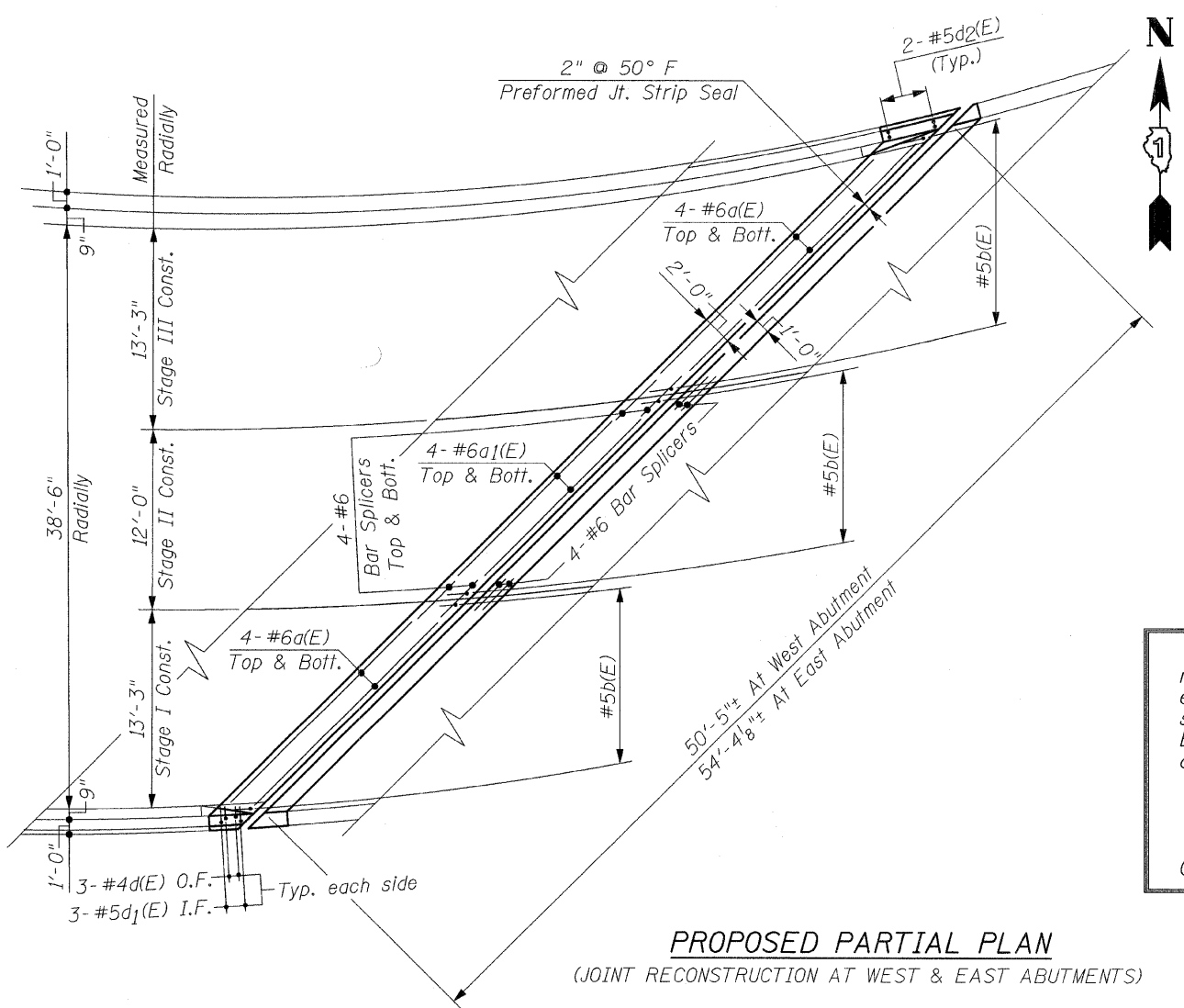
BAR d(E)



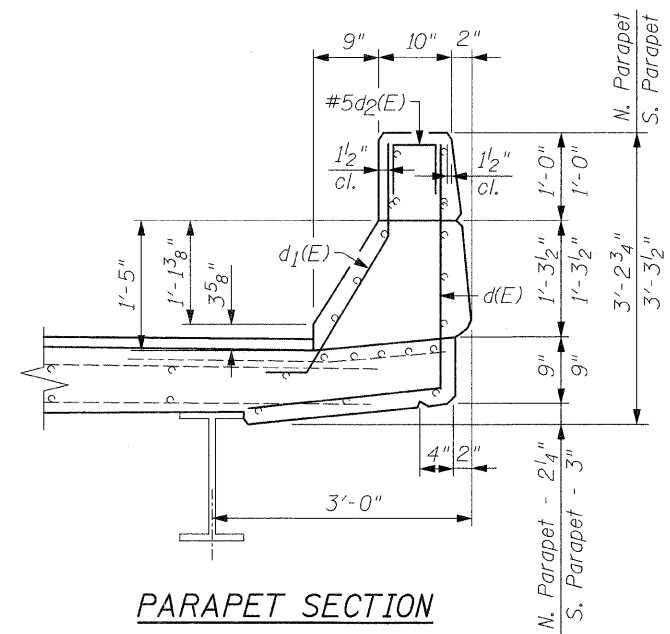
BAR d₁(E)



BARS d₂(E) & u(E)



**PROPOSED PARTIAL PLAN
(JOINT RECONSTRUCTION AT WEST & EAST ABUTMENTS)**



PARAPET SECTION

The Contractor must use extreme caution during concrete removal and must not nick, cut or damage in any way, any of the steel beams. The existing Reinforcement Bars extending into the removal area shall be cleaned, straightened and incorporated into the new construction. Any Reinforcement Bars that are damaged during concrete removal shall be replaced with an approved Bar Splicer or Anchorage System. Cost is included with Concrete Removal. Reinforcement Bars shall conform to the requirements of ASTM A-706, Gr. 60 See Special Provisions. Reinforcement Bars designated (E) shall be Epoxy Coated. Cost for removal of existing Neoprene Exp. Joints is included in the cost of Concrete Removal.

Existing reinforcement bars extending into the removal area shall be cleaned, straightened and incorporated into the new construction. Any reinforcement bars that are damaged during concrete removal shall be replaced with an approved bar splicer or anchorage system. Cost included with Concrete Removal.

Joint openings shall be adjusted according to Article 520.04 of the Std. Specs. when the deck is poured at an ambient temperature other than 50° F.

REVISIONS	
NAME	DATE

ILLINOIS DEPARTMENT OF TRANSPORTATION
EXPANSION JOINT DETAILS
U.S. RTE. 30
OVER
HICKORY CREEK
F.A.P. RTE. 607 SECTION: 13 B-I-1
WILL COUNTY
STRUCTURE NO. 099-0105
SCALE: NONE DRAWN BY: D.L./F.M.
DATE: JANUARY 08, 2009 CHECKED BY: B.N.S./S.J.P.
CHRISTIAN-ROGE & ASSOC., INC.
CHICAGO ILLINOIS